



COLDWELL BANKER
PREFERRED,
REALTORS®

FOR LEASE

10825 SO. UNION AVE

Bakersfield, CA 93307



HIGHLIGHTS:

- On Truck Route
- Easy access to CA 99
- Nearby Residential areas, Shopping & more

Vikram Reddy

Coldwell Banker Preferred, Realtors

DRE #01845883 | Co.DRE# 01100927

661 836 2345 office | 661 900 1596 cell

vreddy1@yahoo.com

PROPERTY INFORMATION:

Lot Size: Approx. 2.23 Acres

APN# 185-120-20

LEASE RATE

**\$6,000 / Month
(Modified Gross)**

FEATURES

**2 Shop Buildings
Approx. 2,575 sq. ft.
Includes Office, Restrooms
& Paint Booth**

**3 Covered canopies
Approx. 2,798 sq. ft.**

**Automotive Repair/
Oil Change Bay
Approx. 787 sq. ft.
Includes office
Lots of Parking Spaces**

**Permitted Use:
Auto Repair & Body Shop**



COLDWELL BANKER
PREFERRED,
REALTORS®

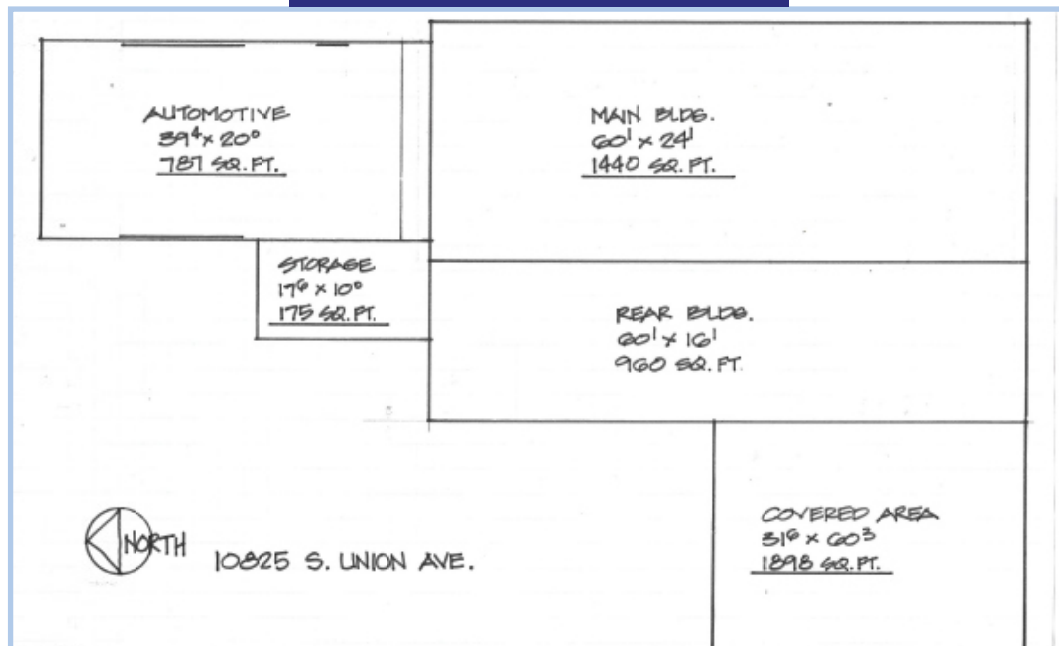
FOR LEASE

10825 SO. UNION AVE

Bakersfield, CA 93307



So. Union Ave



Vikram Reddy

Coldwell Banker Preferred, Realtors

DRE #01845883 | Co.DRE# 01100927

661 836 2345 office | 661 900 1596 cell

vreddy1@yahoo.com



COLDWELL BANKER
PREFERRED,
REALTORS®

FOR LEASE

10825 SO. UNION AVE

Bakersfield, CA 93307



Vikram Reddy

Coldwell Banker Preferred, Realtors

DRE #01845883 | Co.DRE# 01100927

661 836 2345 office | 661 900 1596 cell

vreddy1@yahoo.com

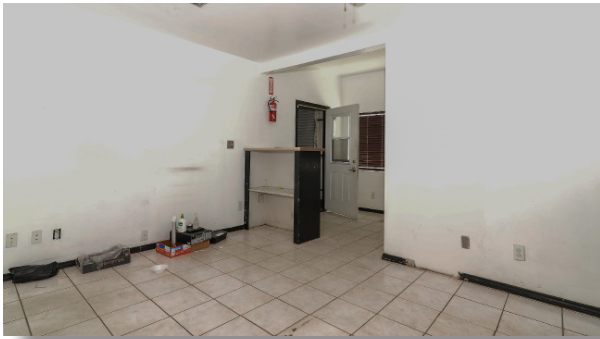


COLDWELL BANKER
PREFERRED,
REALTORS®

FOR LEASE

10825 SO. UNION AVE

Bakersfield, CA 93307



Vikram Reddy

Coldwell Banker Preferred, Realtors

DRE #01845883 | Co.DRE# 01100927

661 836 2345 office | 661 900 1596 cell

vreddy1@yahoo.com

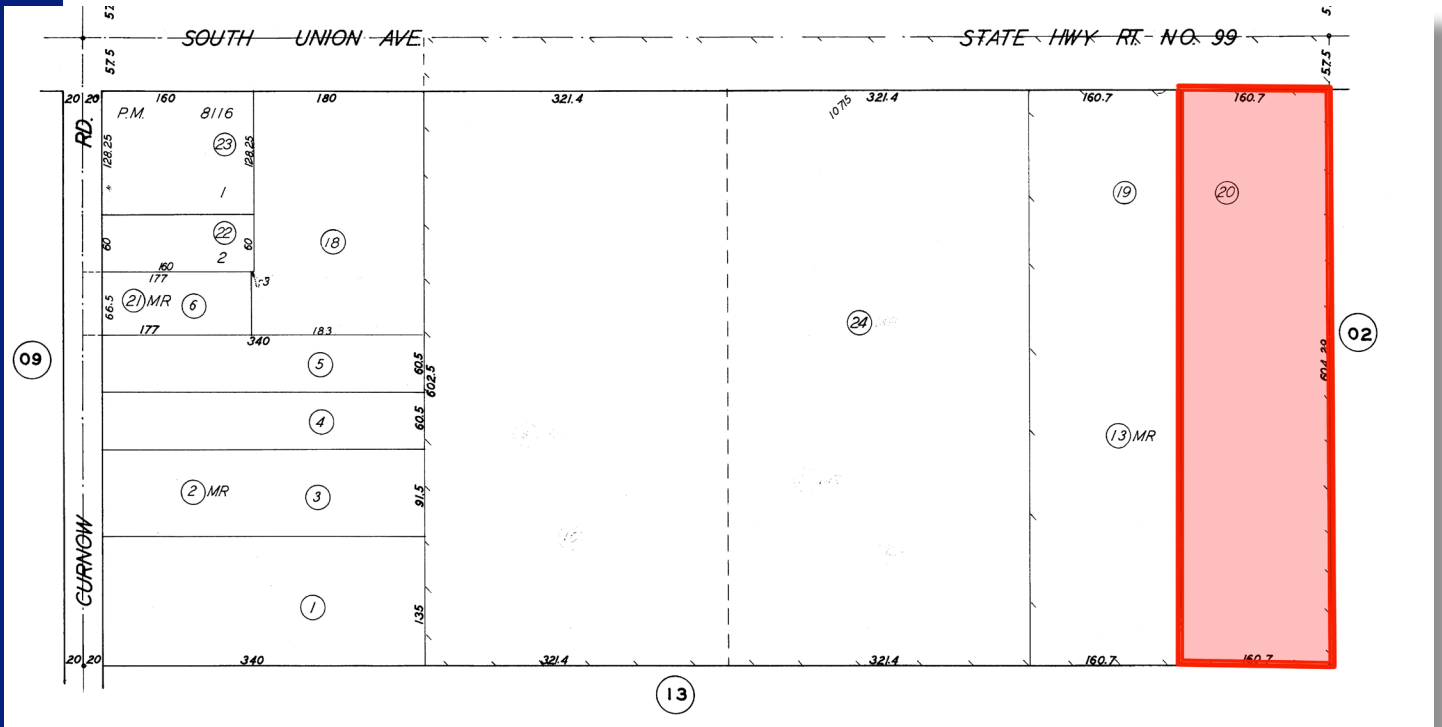


COLDWELL BANKER
PREFERRED,
REALTORS®

FOR LEASE

10825 SO. UNION AVE

Bakersfield, CA 93307



Vikram Reddy

Coldwell Banker Preferred, Realtors

DRE #01845883 | Co.DRE# 01100927

661 836 2345 office | 661 900 1596 cell

vreddy1@yahoo.com