

# BLUE VALLEY BUSINESS CENTER

16132 & 16144 Foster St

## Office Warehouse Building



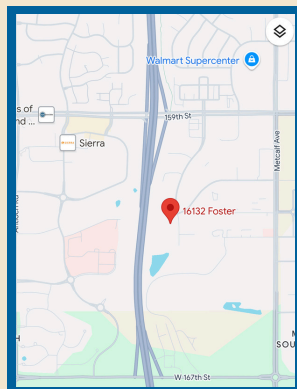
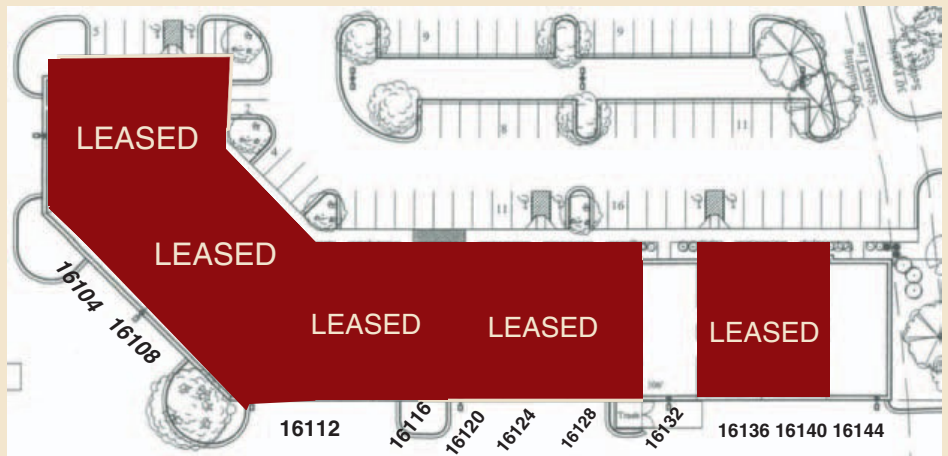
**NNN Lease**

**100% A/C Units**

**1,986 sf. each**

**Available - Flex Space**

- 90 acre mixed-use, campus style design  
Heavily landscaped with large green areas, street planters, high berms, and hedges
- Single Story 30,298 sq. ft. building.  
Constructed of exposed aggregate pre-cast, and ample glass framed in bronze aluminum mullions.
- Located in South Overland Park, KS
- Approx. 7 min. south of I-435 on Metcalf Avenue.
- (1) Double man door



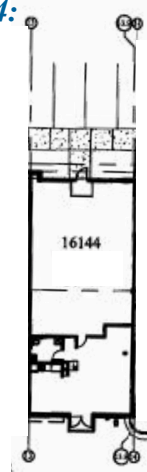
**For More Information  
Please Contact:**



**Marty Boxberger**  
**(913) 402-8868**

**marty.boxberger@gmail.com**

**UNIT 16144:**  
**1,986 SQ FT.**



**UNIT 16132:**  
**1,986 SQ FT.**

