

# 4113 OLEANDER DRIVE

## ± 1,940 SF RETAIL/OFFICE SPACE FOR LEASE



Presented By:

Cape Fear Commercial

1051 Military Cutoff Rd | Suite 200

Wilmington, NC 28405

(p) 910.344.1000 (f) 910.344.1020





**ADDRESS:** **Anderson Square**  
4113 Oleander Drive  
Wilmington, NC | New Hanover County

**AVAILABLE SF:** Unit C:  $\pm$  1,940 SF

**RATE:** \$14.50/SF | NNN

**TICAM:** \$3.95/SF (2019)

**DESCRIPTION:**  $\pm$  1,940 square feet of retail/office for lease at Anderson Square, a shopping center in the Midtown submarket of Wilmington, North Carolina.

Along with ample parking, Anderson Square offers easy access and great visibility along Oleander Drive, one of the area's major corridors, making it the ideal location for retail/office users.

**LOCATION:** Anderson Square is centrally located in the Midtown submarket of Wilmington along Oleander Drive. It sits in close proximity of Independence Mall, Whole Foods and UNCW, as well as the highly trafficked intersection of S. College Road & Oleander Drive.



For more information, please contact:

**Patrick Riley**  
910.344.1018 (direct)  
910.264.2153 (mobile)  
patrick@capefearcommercial.com



**Patrick Riley**  
910.344.1018 (direct)  
910.264.2153 (mobile)  
patrick@capefearcommercial.com



For more information, please contact:

**Patrick Riley**

910.344.1018 (direct)

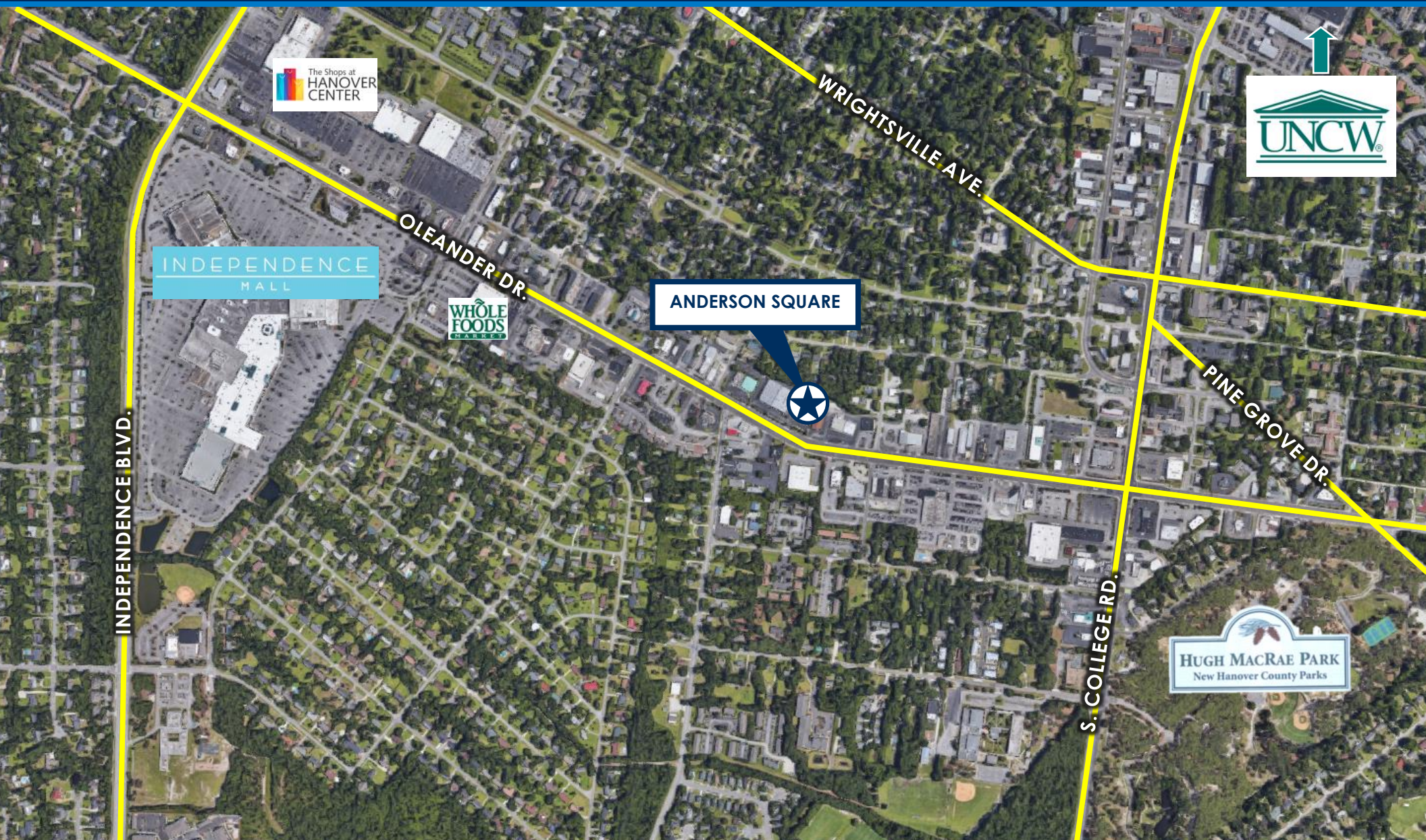
910.264.2153 (mobile)

[patrick@capefearcommercial.com](mailto:patrick@capefearcommercial.com)



# AERIAL MAP

Anderson Square  
Wilmington, NC



For more information, please contact:

**Patrick Riley**

910.344.1018 (direct)

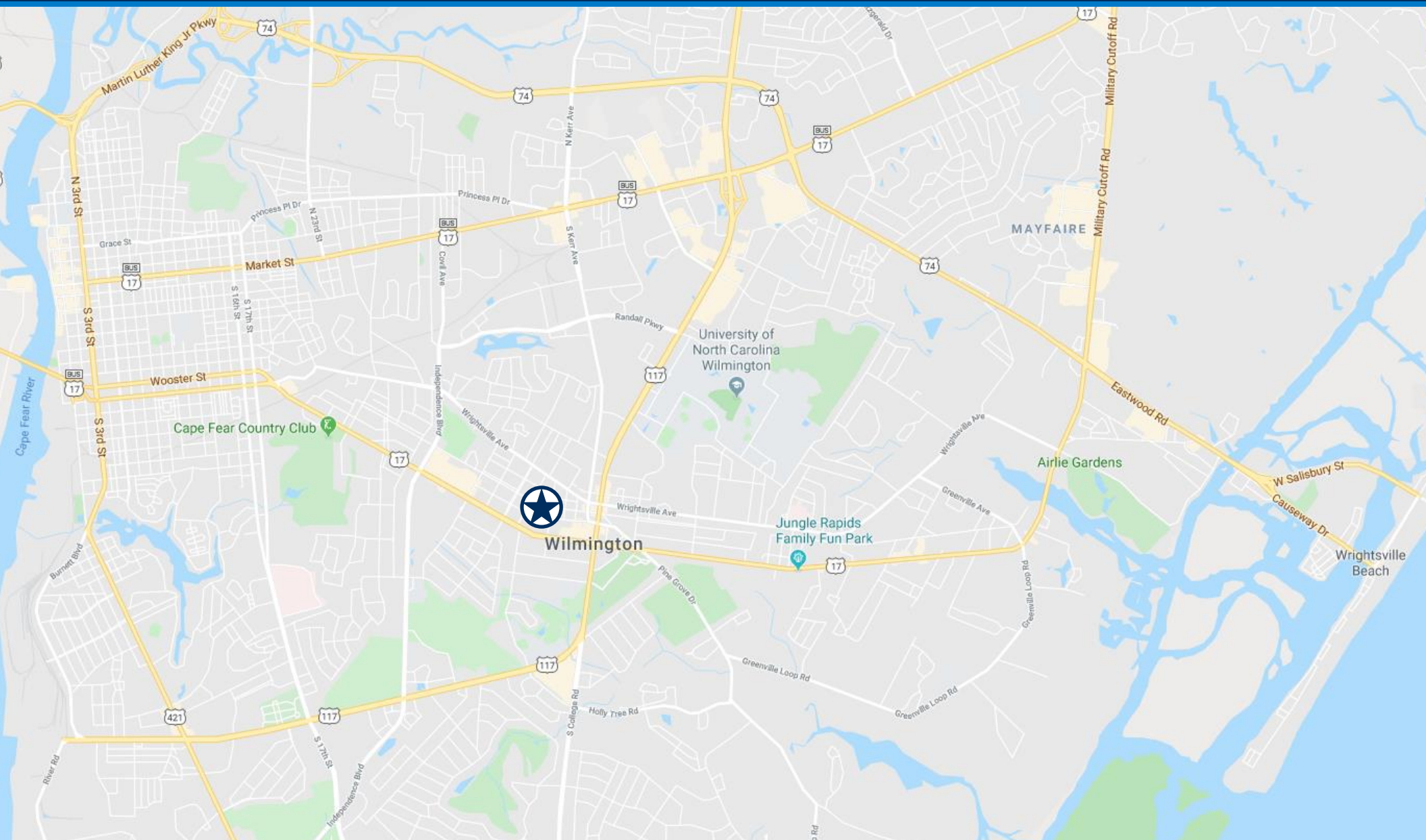
910.264.2153 (mobile)

[patrick@capefearcommercial.com](mailto:patrick@capefearcommercial.com)



# LOCATION MAP

Anderson Square  
Wilmington, NC



For more information, please contact:

**Patrick Riley**

910.344.1018 (direct)

910.264.2153 (mobile)

[patrick@capefearcommercial.com](mailto:patrick@capefearcommercial.com)

