

1820 Martin Luther King Jr Ave.
Salisbury, NC 28144

Industrial Facility For Lease

Building 1: 100,000 SF

Building 2: 45,000 SF



Don Moss, SIOR, CCIM

Executive Vice President
+1 704 409 2372
don.moss@colliers.com

John Ellis

Senior Associate
+1 704 409 2914
john.ellis@colliers.com

JD Allen

Associate
+1 704 409 2368
jd.allen@colliers.com



Accelerating success.

Building 1 Overview

Address:	1820 Martin Luther King Jr Ave Salisbury, NC 28144	Acreage:	± 5.52
County:	Rowan	Loading:	(4) Dock Doors (2) Drive In Doors
Building Size:	100,000 SF	Clear Height:	24' clear (center of front) 22' eaves 20' clear (center of rear) 17' eaves
Office SF:	± 5,000 SF; Two Story Office	Column Spacing:	24' 5" x 38'
Power:	2000 amps, 480 volts, 3 phase power	Year Built:	1983
Cranes:	(1) 500 lbs jib (1) 500 lbs bridge (1) 1/2 ton jib (6) 3 ton bridge	Sprinkler:	Wet
Location:	1 mile from I-85 Potential Rail Access	Asking Rate:	\$3.95/SF NNN



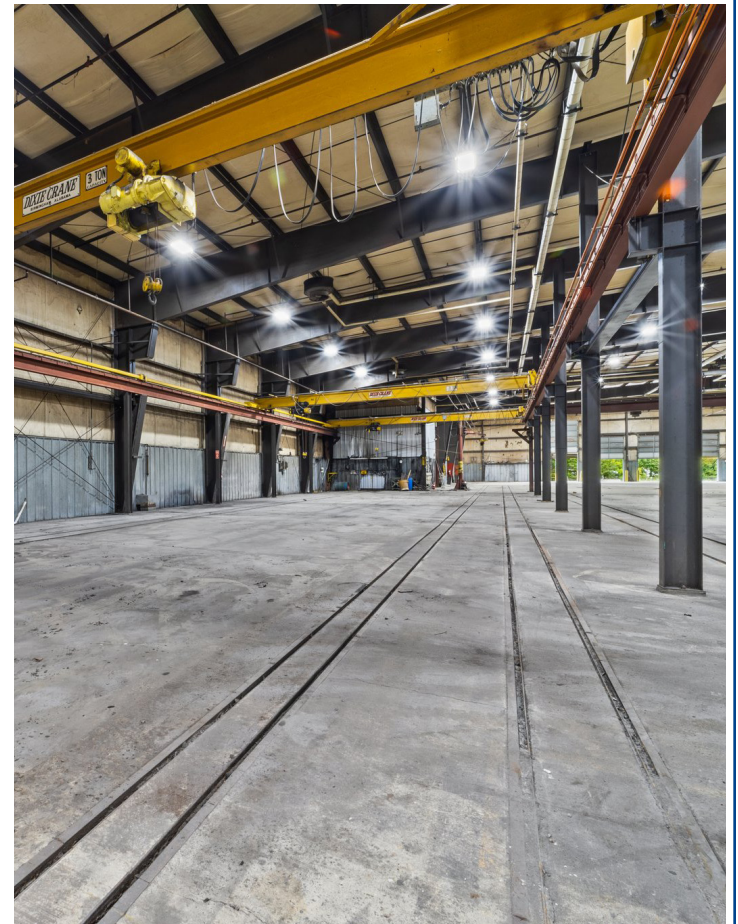
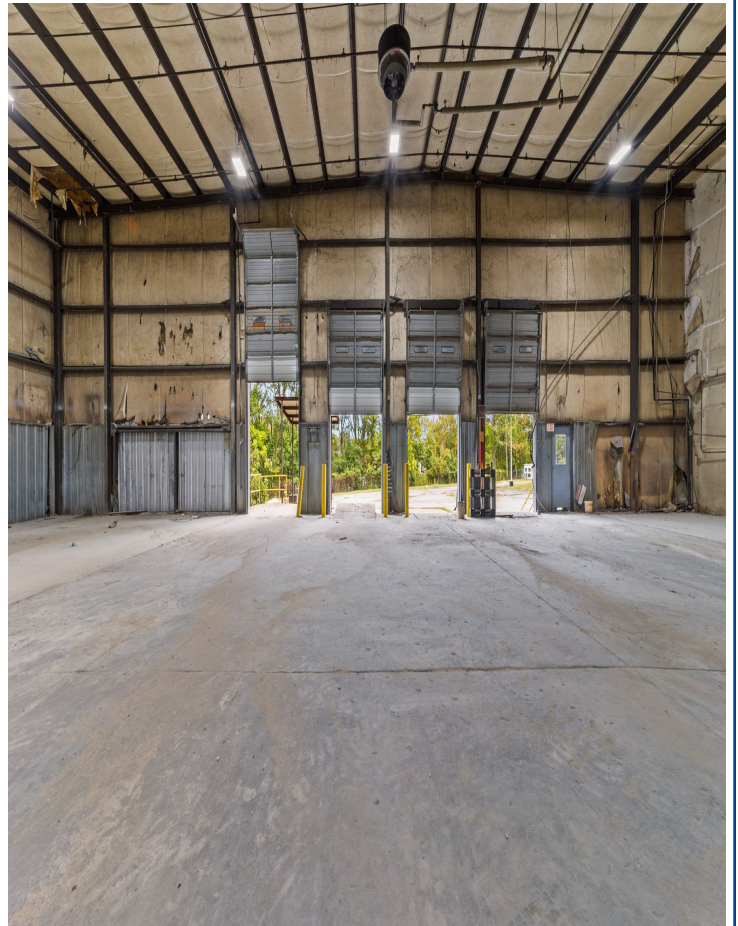


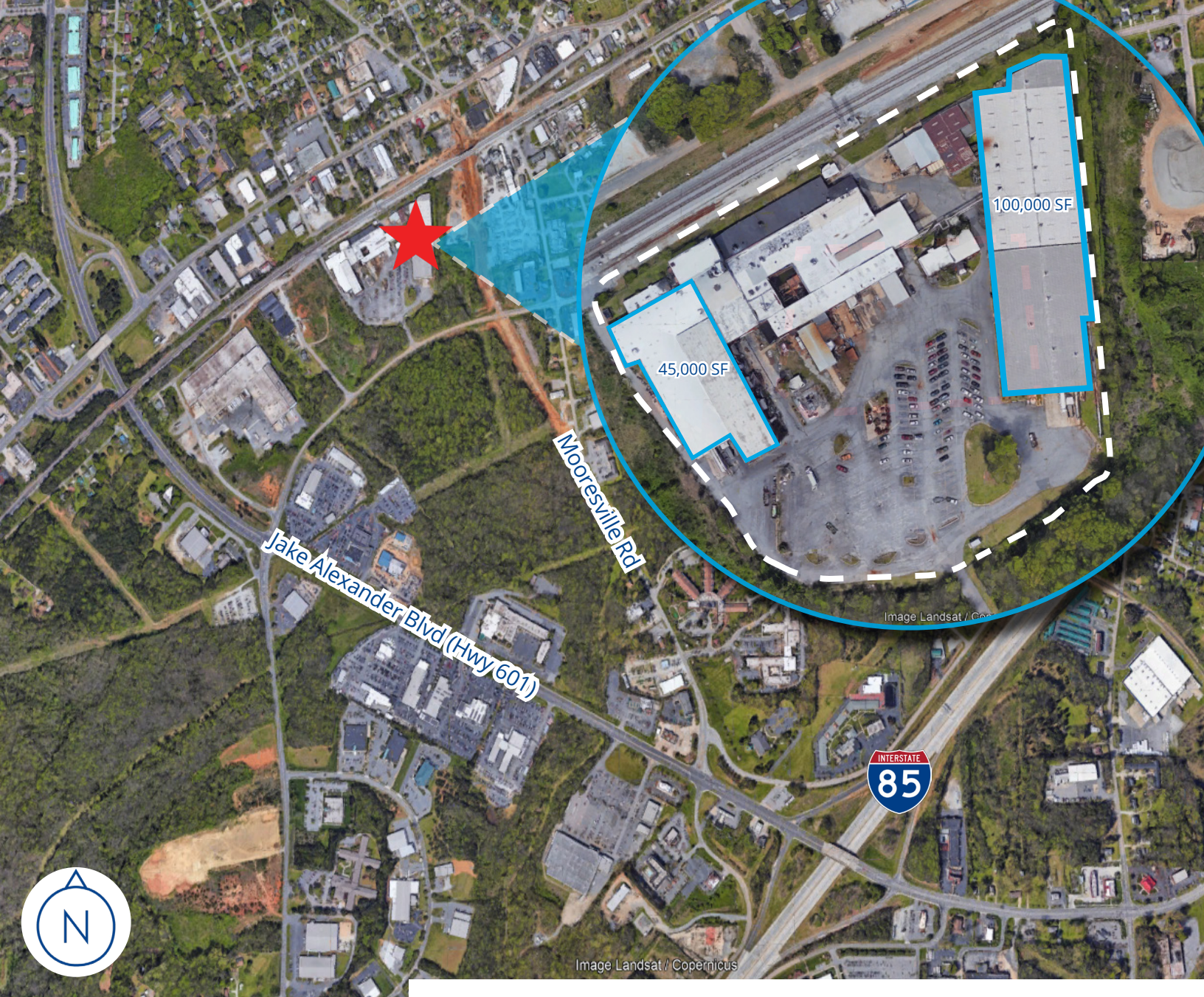
Building 2 Overview

Address:	1820 Martin Luther King Jr Ave Salisbury, NC 28144	Acreage:	± 5.52
County:	Rowan	Loading:	(3) Dock Doors (1) Drive In Doors
Building Size:	45,000 SF	Clear Height:	Right Side- 19' Left Side- 18'
Lighting:	LED Lighting	Year Built:	1983
Cranes:	Nonoperational	Sprinkler:	Wet
Location:	1 mile from I-85 Potential Rail Access	Power	480 Volts 3 Phase 1600 amps

Photo Gallery

45,000 - 100,000 SF





Industrial Facility For Lease

45,000 - 100,000 SF Building

Don Moss, SIOR, CCIM
Executive Vice President
+1 704 409 2372
don.moss@colliers.com

John Ellis
Senior Associate
+1 704 409 2914
john.ellis@colliers.com

JD Allen
Associate
+1 704 409 2368
jd.allen@colliers.com



Colliers Charlotte
300 W. Summit Ave
Suite 200
Charlotte, NC 28203
+1 704 409 9933

This document/email has been prepared by Colliers for advertising and general information only. Colliers makes no guarantees, representations or warranties of any kind, expressed or implied, regarding the information including, but not limited to, warranties of content, accuracy and reliability. Any interested party should undertake their own inquiries as to the accuracy of the information. Colliers excludes unequivocally all inferred or implied terms, conditions and warranties arising out of this document and excludes all liability for loss and damages arising there from. This publication is the copyrighted property of Colliers and /or its licensor(s). © 2023. All rights reserved. This communication is not intended to cause or induce breach of an existing listing agreement. Colliers International Group Inc.