

FOR SALE

INDUSTRIAL ZONED
LAND SITE AVAILABLE



HWY 78

0 HWY 78 LADSON, Charleston, SC 29456

S. Crawford Riddle | O: +1 843 994 7198 M: +1 864 423 4973 | crawford.riddle@harborcommercialpartners.com



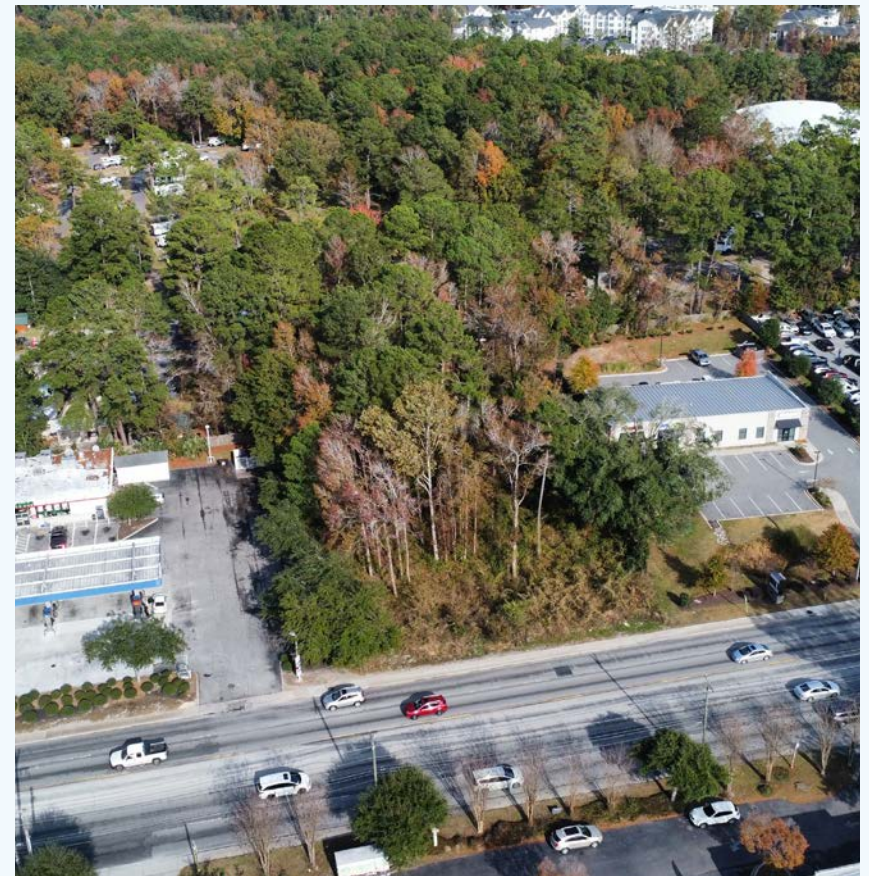


PROPERTY SPECS

SIZE	0.96 ACRES
SALE PRICE	\$600,000
PARCEL ID	487-00-00-032
ZONING	IN - Industrial
COUNTY	Charleston County
GAS	Dominion Energy
ELECTRICITY	Available
WATER/SEWER	Available

PROPERTY OVERVIEW

The property has over 135 linear feet of frontage along Hwy 78, which is a heavily traveled corridor running parallel to I-26. The site is located less than a mile from Exit 205A at I-26. Ideal development for flex, storage, and other commercial uses.



AMENITIES MAP

0 HWY 78 LADSON, Charleston, SC 29456

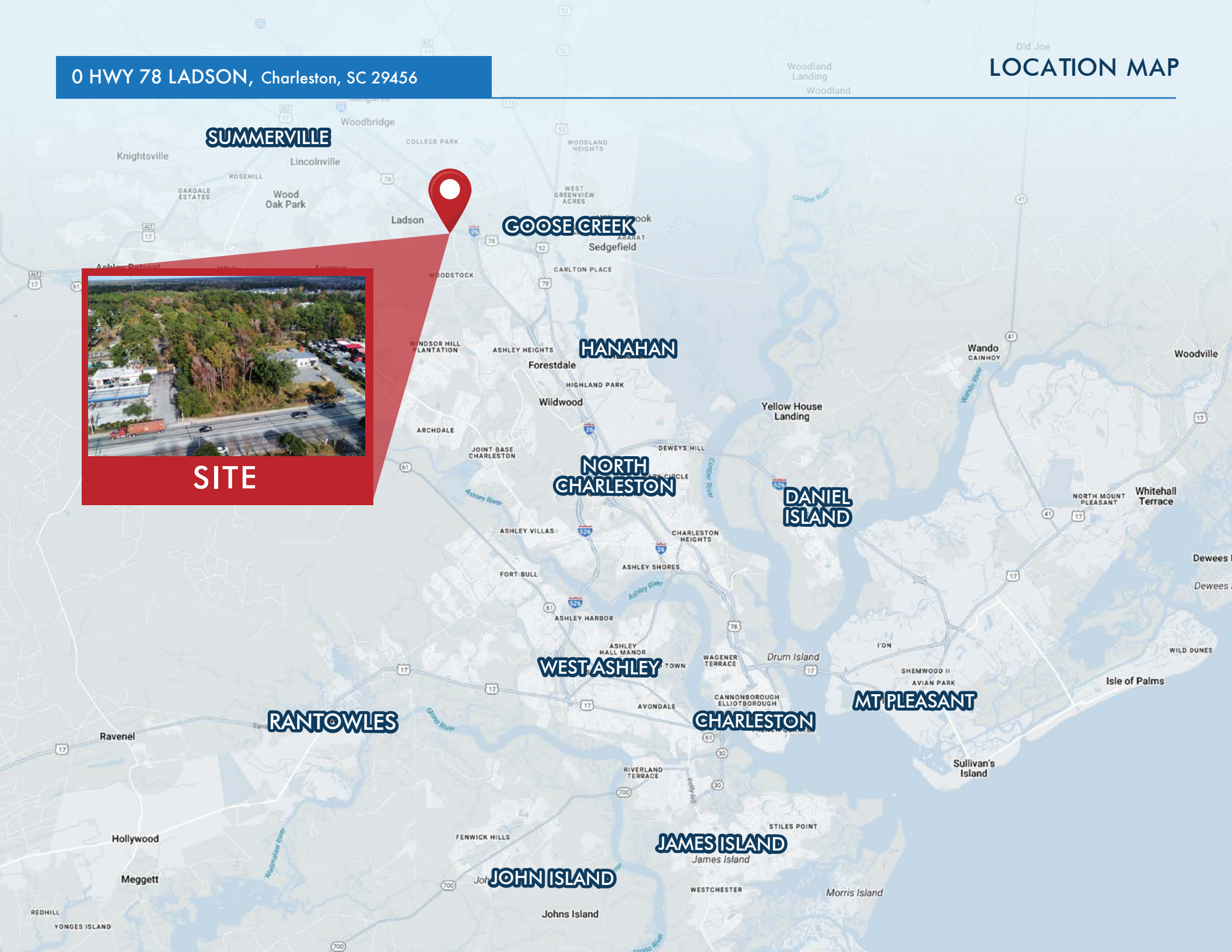


0 HWY 78 LADSON, Charleston, SC 29456

Old Joe
LOCATION MAP



SITE





PARCEL INFORMATION

TMS





487-00-00-032

ZONING INFORMATION

CODE

IN

The Industrial, IN District in Charleston County allows an extensive range of commercial uses and activities.

	ONE MILE	THREE MILE	FIVE MILE
 <p>POPULATION</p>	5,130	56,183	189,505
 <p>TOTAL BUSINESSES</p>	102	1,709	4,350
 <p>MEDIAN AGE</p>	33.7	36.7	35.4
 <p>MEDIAN HOUSEHOLD INCOME</p>	\$98,748	\$80,571	\$76,562



CONTACT:

S. Crawford Riddle

Associate, Industrial & Investment Services
O: +1 843 994 7198 M: +1 864 423 4973
crawford.riddle@harborcommercialpartners.com

Tradd Varner, SIOR

Partner, Industrial and Investment Services
+1 843 532 1684
tradd.varner@harborcommercialpartners.com

Harbor Commercial Partners

146 Williman St, Unit 300, Charleston, SC 29403
www.harborcommercialpartners.com

Todd Garrett, CCIM, SIOR

Partner, Industrial and Investment Services
+1 843 408 8846
todd.garrett@harborcommercialpartners.com

Harbor
COMMERCIAL PARTNERS

harborcommercialpartners.com