

TIMPANOGOS TECH CENTER

FOR SUBLEASE



PROPERTY DETAILS

1712 S. East Bay Blvd., Suite 104, Provo, UT 84606

- 14,772 available square feet
- REDUCED lease rate: \$12.50/SF (full service)
- Located within the Timpanogos Tech Center
- Class A office space
- Modern design with open layout
- Private offices and call booth rooms
- Equipped with ready data center room
- Furniture available
- Surrounded by many amenities
- Close proximity to Provo Towne Centre and I-15
- Lease expiration date: February 28, 2030

2025 DEMOS



EST. POPULATION

1 MILE » **10,421**
3 MILE » **84,185**
5 MILE » **158,991**



EST. HOUSEHOLDS

1 MILE » **3,526**
3 MILE » **25,435**
5 MILE » **48,641**



EST. AVERAGE HH INCOME

1 MILE » **\$81,943**
3 MILE » **\$81,302**
5 MILE » **\$97,698**

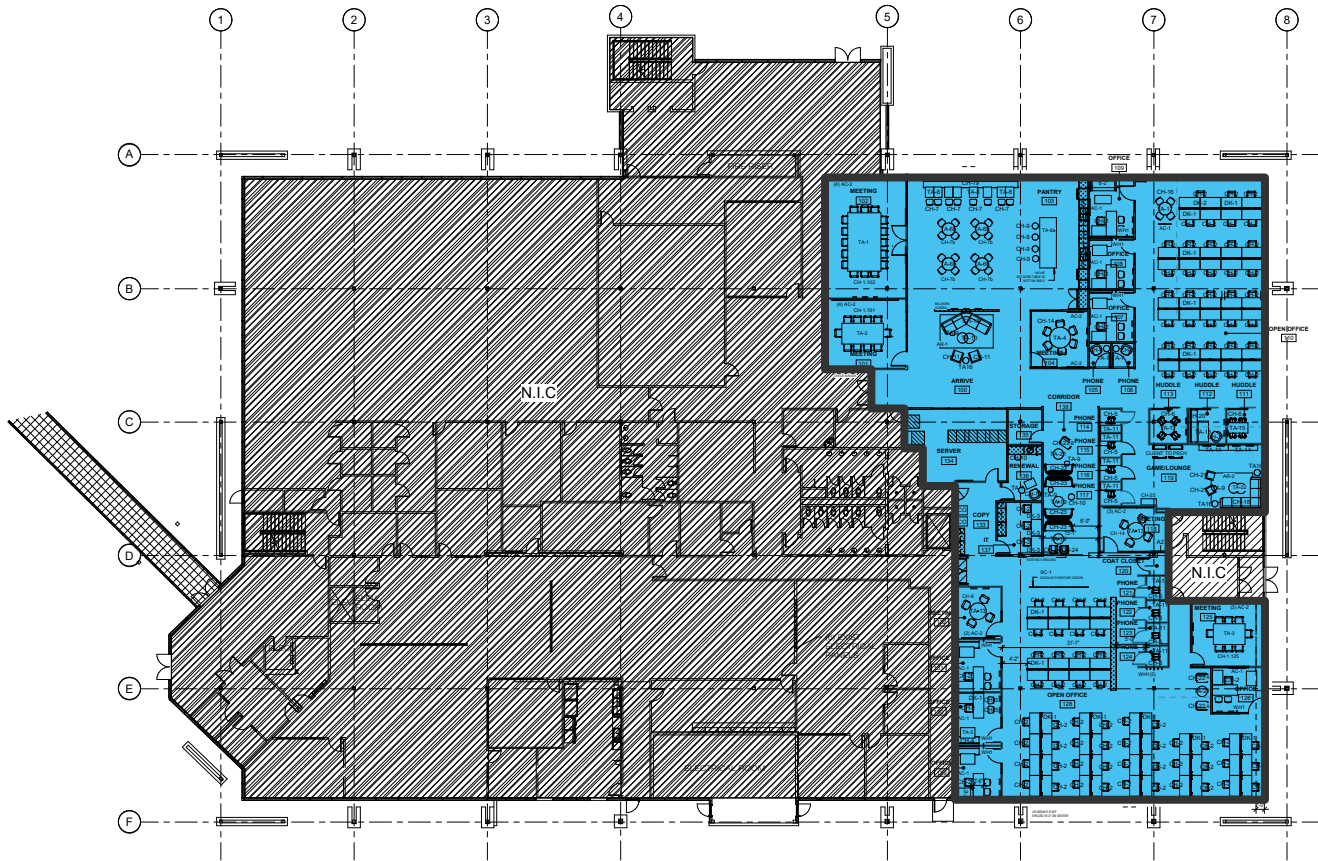


CODY BLACK
cblack@newmarkmw.com
direct 385.233.9141
[View Profile](#)

**FULL SERVICE
COMMERCIAL REAL ESTATE**
2015 West Grove Parkway, Suite J
Pleasant Grove, UT 84062
Office 385.233.9140
www.newmarkmw.com

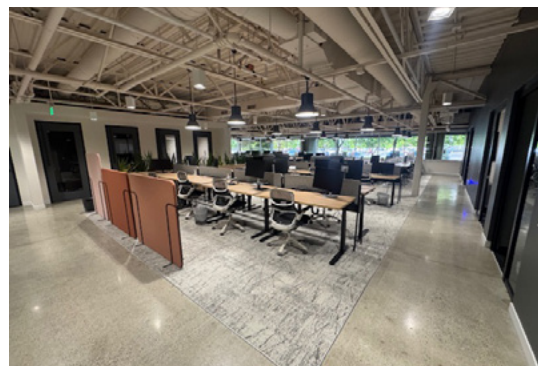
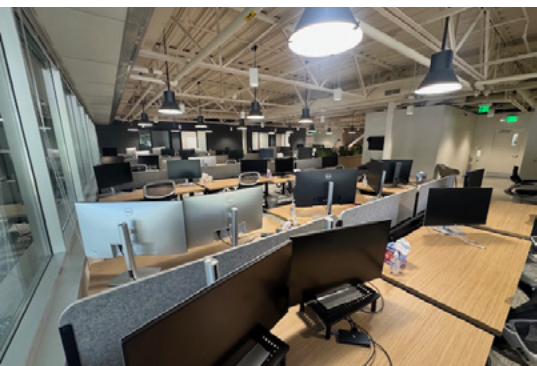
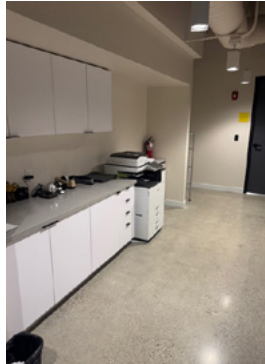
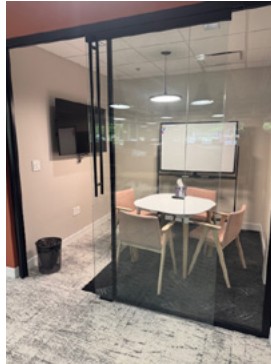
TIMPANOGOS TECH CENTER

FLOOR PLAN



CODY BLACK
cblack@newmarkmw.com
direct 385.233.9141
[View Profile](#)

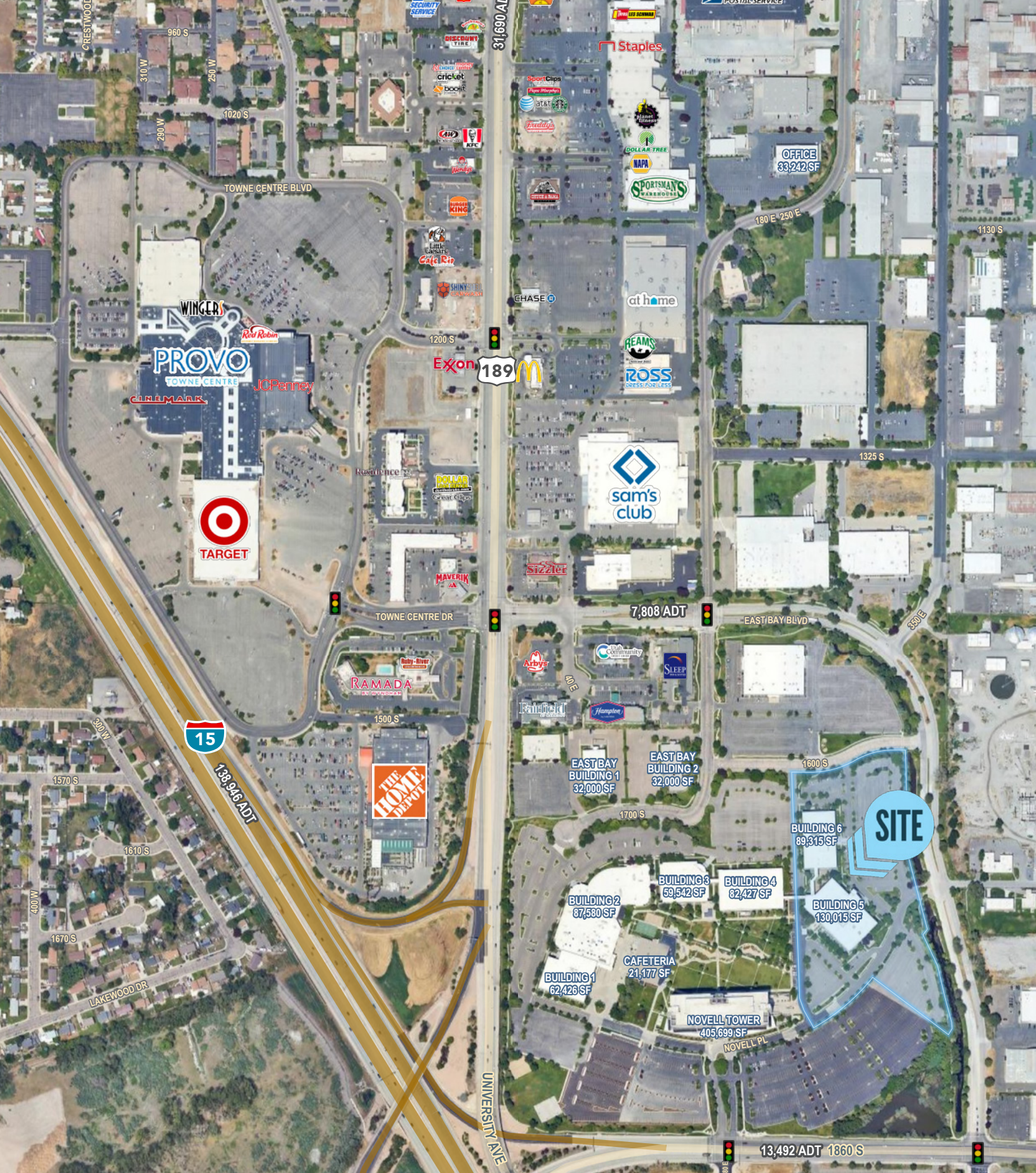
**FULL SERVICE
COMMERCIAL REAL ESTATE**
2015 West Grove Parkway, Suite J
Pleasant Grove, UT 84062
Office 385.233.9140
www.newmarkmw.com



NEWMARK
MOUNTAIN WEST

CODY BLACK
cblack@newmarkmw.com
direct 385.233.9141
[View Profile](#)

**FULL SERVICE
COMMERCIAL REAL ESTATE**
2015 West Grove Parkway, Suite J
Pleasant Grove, UT 84062
Office 385.233.9140
www.newmarkmw.com



CODY BLACK
 cblack@newmarkmw.com
 direct 385.233.9141
[View Profile](#)

**FULL SERVICE
 COMMERCIAL REAL ESTATE**
 2015 West Grove Parkway, Suite J
 Pleasant Grove, UT 84062
 Office 385.233.9140
www.newmarkmw.com