

IN-LINE, LARGE END-CAP, & TWO YARDS FOR LEASE LINCOLN PLAZA 1,500 - 15,000 SF & 0.76 - 1.67 ACRES

1120 South Lincoln Avenue, Jerome, Idaho 83338

NEGOTIABLE RATE

PYLON SIGNAGE

SECURE YARD AREAS

RIDLEY'S ANCHORED

MAIN THOROUGHFARE



CONTACT

ANDREA NILSON

Executive Director
+1 208 890 4028
andrea@summitreg.com

LEANN HUME, CCIM, CLS, CRRP

Executive Director
+1 208 890 1089
leann@summitreg.com

JULIE KISSLER

Associate Director
+1 208 794 2746
julie@summitreg.com



IN-LINE, LARGE END-CAP, & TWO YARD AREAS

1120 South Lincoln Avenue, Jerome, Idaho 83338



PROPERTY DETAILS

AVAILABLE: 1,500 & 15,000 SF

SECURE YARDS: 0.76 & 1.67 ACRES

RATES & TERMS: NEGOTIABLE

T.I. ALLOWANCE: AVAILABLE

ZONING: C2 GENERAL BUSINESS

LISTING HIGHLIGHTS

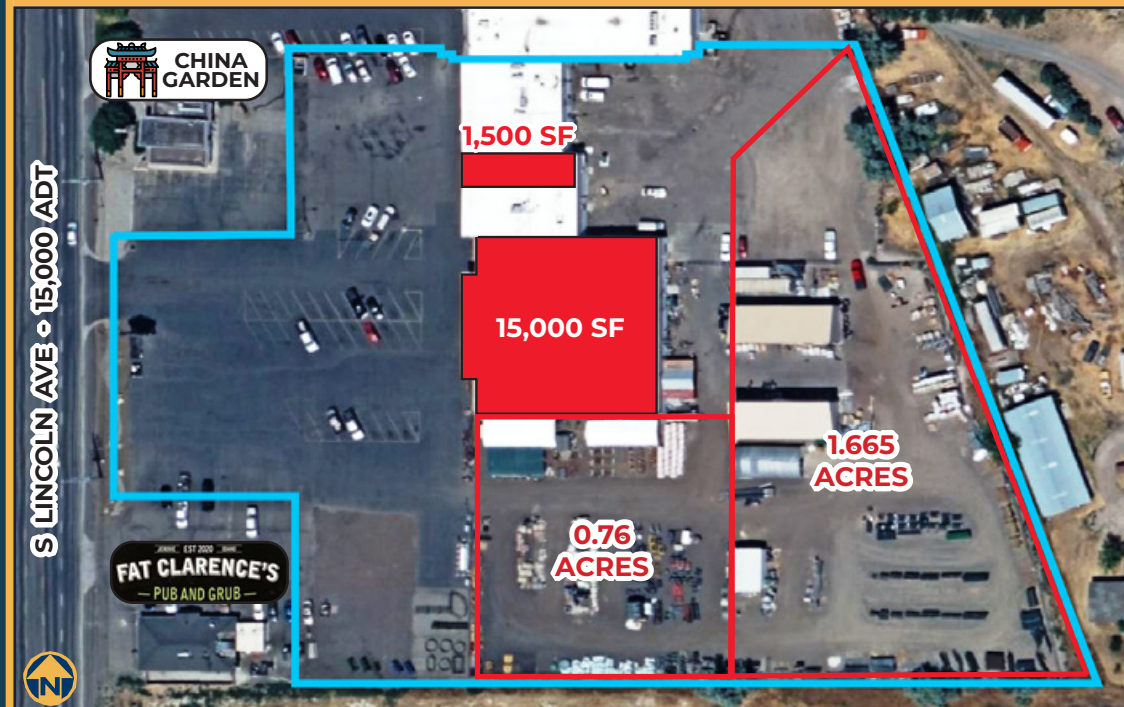
The **Lincoln Plaza** is a multi-tenant retail center located on one of the main thoroughfares in Jerome, Idaho

The center is the former home of **D&B Supply**, which has relocated to their newly constructed building

This **multi-tenant retail building** has 2 spaces & 2 yards available; a 1,500 SF in-line shop space, a 15,000 SF end-cap, and .76 & 1.67 acre secure sales/staging areas

Co-tenants include Sonora Tacos, Puff N Stuff, a Liquor Store, and shadow anchored by Ridley's Market

Landlord offering a negotiable lease rate, terms, and tenant improvement allowance - contact agents for additional details and to schedule a walk-through



IN-LINE, LARGE END-CAP, & TWO YARD AREAS

1120 South Lincoln Avenue, Jerome, Idaho 83338



SONORA TACOS

PUFF N STUFF

AVAILABLE
1,500 SF

IDAHO STATE
LIQUOR STORE

AVAILABLE
15,000 SF

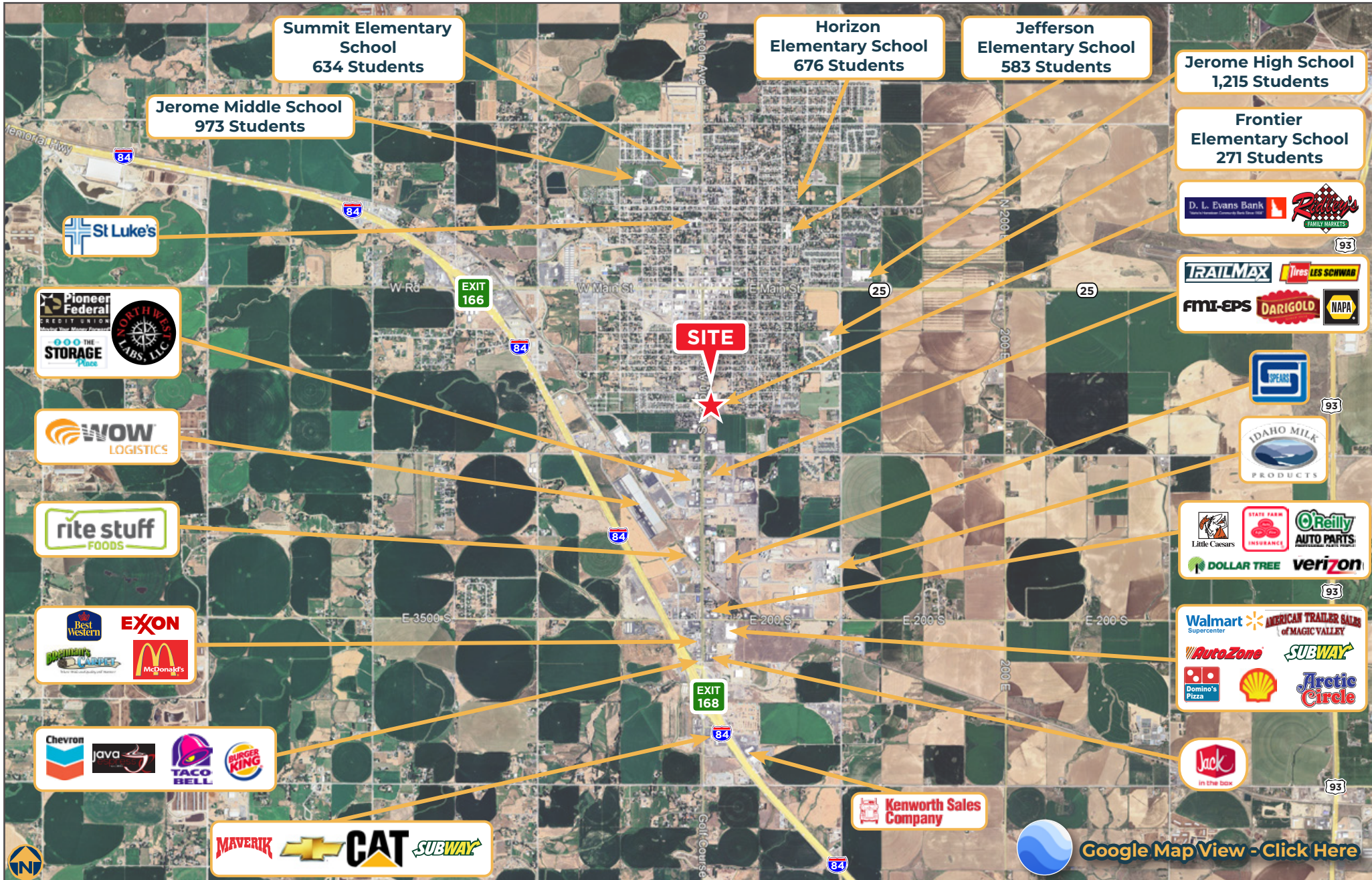
AVAILABLE
SECURE YARD AREAS
0.76 & 1.67 ACRES

PYLON
SIGNAGE



IN-LINE, LARGE END-CAP, & TWO YARD AREAS

1120 South Lincoln Avenue, Jerome, Idaho 83338



 [Google Map View - Click Here](#)

IN-LINE, LARGE END-CAP, & TWO YARD AREAS

1120 South Lincoln Avenue, Jerome, Idaho 83338



1, 3 & 5 MILE DEMOGRAPHICS

5 MILE SNAPSHOT

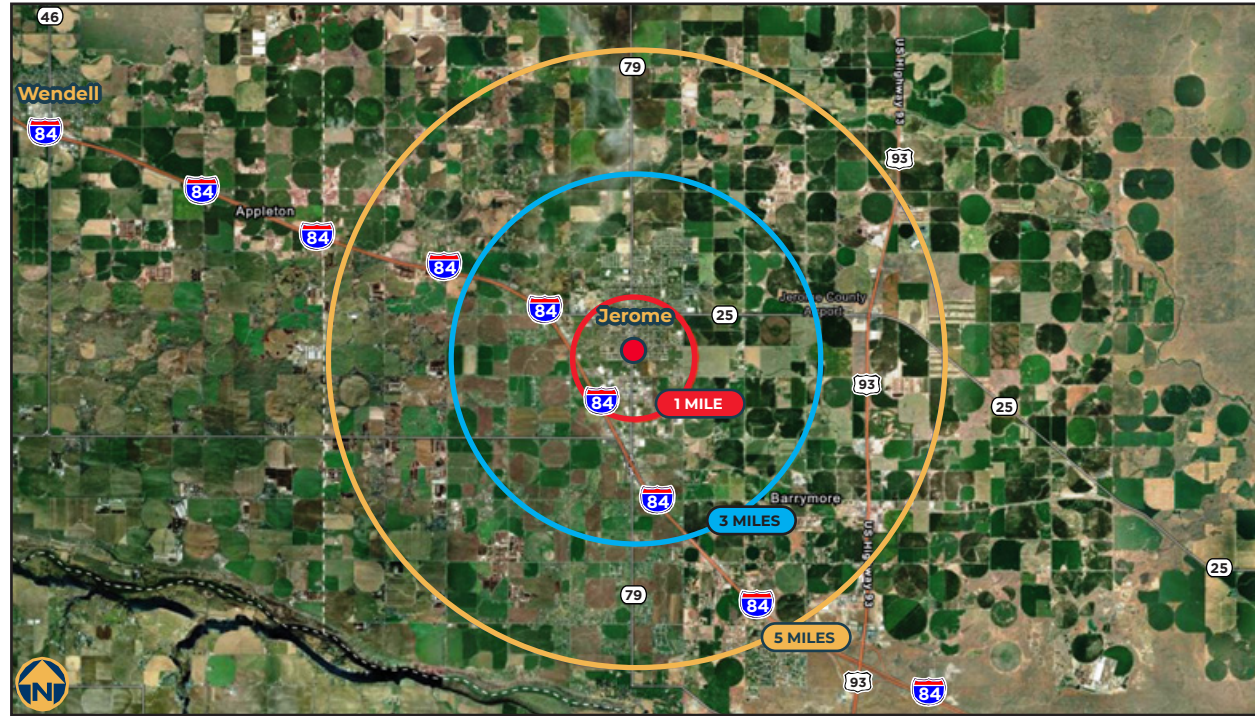
19,262
GROWING POPULATION

6,420
HOUSEHOLDS

\$65,770
MEDIAN HH INCOME

\$86,822
HIGH AVERAGE HH INCOME

33
MEDIAN AGE



1, 3 & 5 MILE DEMOGRAPHICS
CLICK BELOW TO VIEW

RETAIL DEMAND OUTLOOK
CLICK BELOW TO VIEW



Source: U.S. Census Bureau. Esri forecasts for 2025 and 2030. Esri converted Census 2010 into 2020 geography & Census 2020 data.

IN-LINE, LARGE END-CAP, & TWO YARD AREAS

1120 South Lincoln Avenue, Jerome, Idaho 83338



5, 10 & 15 MINUTE DEMOS

15 MINUTE SNAPSHOT

25,787

GROWING POPULATION

8,682

HOUSEHOLDS

\$68,322

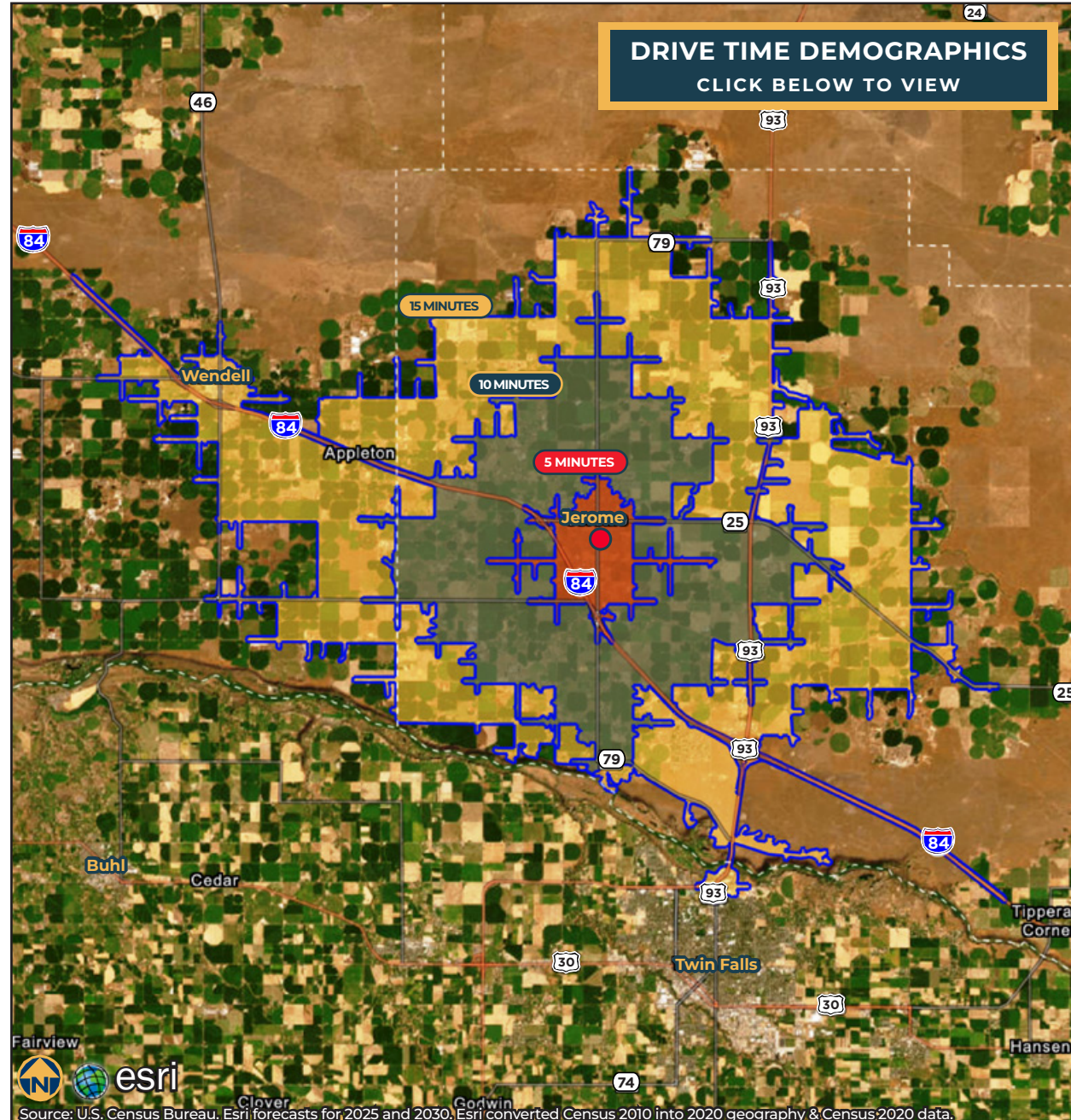
MEDIAN HH INCOME

\$88,496

HIGH AVERAGE HH INCOME

12,378

DAYTIME POPULATION



IN-LINE, LARGE END-CAP, & TWO YARD AREAS

1120 South Lincoln Avenue, Jerome, Idaho 83338



RECENT GROWTH IN JEROME, IDAHO (2023–2025)

POPULATION & DEMOGRAPHICS

- In 2023, Jerome, ID's population was **12,689**
- That represented about a **1.66% increase** from 2022
- According to demographic projections, Jerome's population is estimated at **13,481 in 2024 and 13,794 in 2025**
- Median age is quite young: **31 years**
- Ethnic composition: a large share of residents are Hispanic (about **48.5%**) as per recent demographic estimates

LABOR FORCE & ECONOMY

- As of March 2025, Jerome County had a **civilian labor force of ~12,949 people**
- Unemployment rate (March 2025) in the county: **3.5%**
- Median household income for Jerome County (2023) is **\$69,338**
- Per capita personal income (2023): **\$46,359**
- Employment in the city of Jerome grew: in 2023, the employed population was **5,953** — up ~2.83% from the prior year
- Top industries in Jerome: **Manufacturing, Agriculture, and Retail Trade**
- Key economic drivers:
 - **Dairy processing** (e.g., Idaho Milk Products) remains central
 - **Industrial parks** are being developed: Crossroads Point Business Center and 93 Technology Park

MAJOR INVESTMENTS & DEVELOPMENT PROJECTS

- A **\$190 million ice cream facility** by Idaho Milk Products was announced, expected to bring **70+ new jobs**
- Housing development: in one recent year, **89 single-family homes were built**
- City is expanding higher education infrastructure: the **College of Southern Idaho (CSI)** is growing in Jerome, including new soccer fields and a collegiate soccer program
- Infrastructure: the city is investing in urban renewal, redevelopment, and utility improvements
- According to Crossroads Point data, there was a **\$35.8 million wastewater infrastructure investment**

HOUSING MARKET TRENDS

- As of October 2025, the **median sale price** for a home in Jerome was **\$287,500**, according to Redfin
- However, other data from PropertyFocus (also recent) puts the median **home price closer to \$344,470** for single-family homes
- According to Data USA, in 2023 the **median property value was \$214,900**
- Home ownership rate (2023): **72.2%**

IN-LINE, LARGE END-CAP, & TWO YARD AREAS

1120 South Lincoln Avenue, Jerome, Idaho 83338



RECENT GROWTH IN JEROME, IDAHO (2023–2025)

STRATEGIC OUTLOOK & CHALLENGES

- Jerome’s growth is strongly supported by its **location** — near I-84 and major highways — which is attractive for commercial developers
- The **Jerome Urban Renewal Agency** is very active, helping redevelop blighted areas and push for business and residential expansion
- With business growth (especially in dairy processing), there’s increasing **demand for housing**, which the city is trying to address with new subdivisions
- However, **housing affordability** could become a tension point: strong development, rising property values, and demand may challenge lower- to moderate-income residents

BIG PICTURE (2023–2025): WHAT’S DRIVING GROWTH

- **Economic diversification:** While agriculture (especially dairy) remains foundational, Jerome is leveraging manufacturing, processing, and renewable energy to broaden its base
- **Population momentum:** Steady population gains support more labor supply and help justify further business investment
- **Infrastructure and planning:** The city is proactively investing in infrastructure (utilities, renewal, education) to support growth

KEY DRIVERS BEHIND CRE GROWTH

- **Agriculture & Processing Economy:** The dairy and meat processing industries (like Idaho Milk Products and True West Beef) are central to Jerome’s economy
- **Transportation Accessibility:** Interstate access, available rail, and highway infrastructure make Jerome attractive for distribution and manufacturing
- **Economic Development Strategy:** Through Jerome 20/20, the city is proactively attracting businesses, investing in infrastructure, and planning for future growth
- **Labor Force:** Jerome promotes a “booming economy” and claims to have a growing, capable labor pool
- **Risk Mitigation via Urban Renewal:** The city’s urban renewal efforts help de-risk development by cleaning up areas and making infrastructure more accessible, which is useful for commercial developers

BOTTOM LINE / OUTLOOK

- **Very positive trajectory:** Jerome’s commercial real estate market is growing in industrial and other commercial segments
- **Infrastructure ready:** Thanks to shovel-ready development land and city support, new large-scale projects are very viable
- **Balanced risk:** Vacancy isn’t zero, but absorption is healthy; the city’s planning and zoning efforts are proactive, which helps mitigate some of the risk

IN-LINE, LARGE END-CAP, & TWO YARDS FOR LEASE LINCOLN PLAZA 1,500 - 15,000 SF & 0.76 - 1.67 ACRES

1120 South Lincoln Avenue, Jerome, Idaho 83338



LISTING AGENTS

ANDREA NILSON

Executive Director
+1 208 890 4028
andrea@summitcreg.com

LEANN HUME, CCIM, CLS, CRRP

Executive Director
+1 208 890 1089
leann@summitcreg.com

JULIE KISSLER

Associate Director
+1 208 794 2746
julie@summitcreg.com

©2026 Summit Commercial Real Estate Group All rights reserved. The material in this presentation has been prepared solely for information purposes, and is strictly confidential. Any disclosure, use, copying or circulation of this presentation (or the information contained within it) is strictly prohibited, unless you have obtained Summit Commercial Real Estate Group's prior written consent. The views expressed in this presentation are the views of the author and do not necessarily reflect the views of Summit Commercial Real Estate Group. Neither this presentation nor any part of it shall form the basis of, or be relied upon in connection with any offer, or act as an inducement to enter into any contract or commitment whatsoever. NO REPRESENTATION OR WARRANTY IS GIVEN, EXPRESS OR IMPLIED, AS TO THE ACCURACY OF THE INFORMATION CONTAINED WITHIN THIS PRESENTATION, AND SUMMIT COMMERCIAL REAL ESTATE GROUP IS UNDER NO OBLIGATION TO SUBSEQUENTLY CORRECT IT IN THE EVENT OF ERRORS.