

MEDICAL OFFICE | FOR LEASE

# PALI MOMI MEDICAL CENTER

98-1079 MOANALUA RD, AIEA, HI 96701

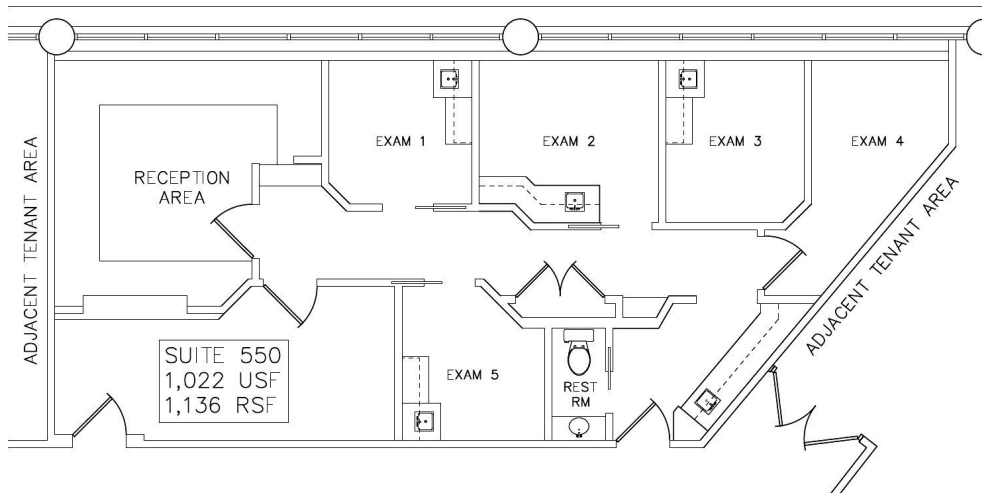
**SUITE AVAILABLE  
OCT. 1, 2026**

## SUITE 550

- 1,136 Square Feet
- Base Rent: \$2.85/SF/Mo
- OPEX: \$1.82/SF/Mo

## PROPERTY DESCRIPTION

- Six-story medical office building adjacent to Pearlridge Center on the corner of Moanalua Road and Pali Momi Street
- Situated on campus to Pali Momi Medical Center
- Ample parking in the Pali Momi garage directly below the office tower



PARTIAL 5TH FLOOR PLAN

## LEASING CONTACTS

### SERENA C. LONGO (S)

+1 808 541 5181

Serena.Longo@cbre.com

RS-74888

### SHAWLEA AONA (S)

+1 808 541 5142

Shawlea.Aona@cbre.com

RS-73197

### AUSTIN O'LEARY (S)

+1 808 541 5156

austin.oleary@cbre.com

RS-83544

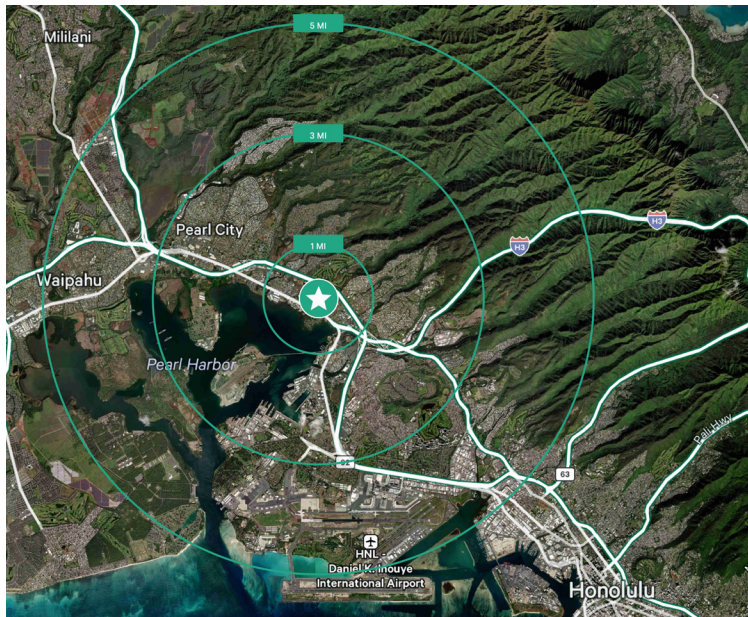
BUILDING OWNED  
AND MANAGED BY



HEALTHCARE  
REALTY

**CBRE**





## KEY TENANTS

- Pali Momi Medical Center
- Pearl City Medical Associates
- Retina Consultants of Hawaii
- Hugo Higa, MD

**MEDICAL OFFICE | FOR LEASE**  
**PALI MOMI MEDICAL CENTER**  
98-1079 MOANALUA RD, AIEA, HI 96701

## LEASING CONTACTS

**SERENA C. LONGO (S)**

+1 808 541 5181  
Serena.Longo@cbre.com  
RS-74888

**SHAWLEA AONA (S)**

+1 808 541 5142  
Shawlea.Aona@cbre.com  
RS-73197

**AUSTIN O'LEARY (S)**

+1 808 541 5156  
austin.oleary@cbre.com  
RS-83544

BUILDING OWNED  
AND MANAGED BY



HEALTHCARE  
REALTY

**CBRE**

© 2025 CBRE, Inc. All rights reserved. This information has been obtained from sources believed reliable but has not been verified for accuracy or completeness. CBRE, Inc. makes no guarantee, representation or warranty and accepts no responsibility or liability as to the accuracy, completeness, or reliability of the information contained herein. You should conduct a careful, independent investigation of the property and verify all information. Any reliance on this information is solely at your own risk.  
SA:RMP\_OF42\_Pali Momi Medical Center\_12.08.25