



Corporate Drive Office Building

800 Corporate Drive

Lexington, Kentucky 40503

Property Highlights

- +/-27,247 SF two-story office building
- New building elevator
- Suite 110: +/-2,297 SF for lease
- Located in Corporate Center at the intersection of Harrodsburg & New Circle Roads
- Convenient access to the Blue Grass Airport, downtown Lexington, upscale residential communities, retail, hotel accommodations, financial institutions and Keeneland Race Course
- Building co-tenants include Save The Children, Next Step Coaching, Devine Law Group, PLLC and Young & Wadlington, PLLC

Spaces

Suite 110

Lease Rate

\$17.00 SF/yr

Space Size

2,297 SF

For More Information

J.L. Cannady, CCIM

Vice President

O: 859 422 4410

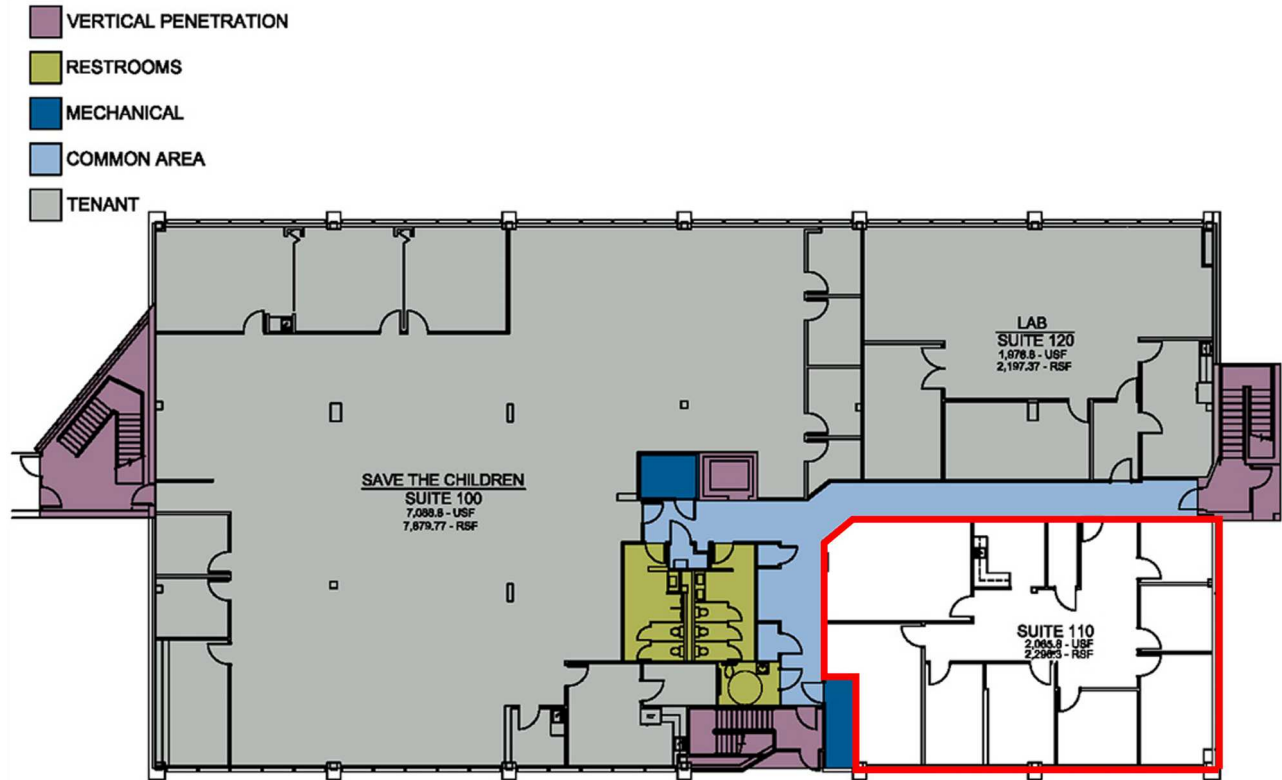
jlcannady@naiisaac.com | KY #218275

Jamie Adams, SIOR, CCIM

Vice President

O: 859 422 4413

jadams@naiisaac.com | KY #216464



Lease Information

Lease Type:	Full Service	Lease Term:	Negotiable
Total Space:	2,297 SF	Lease Rate:	\$17.00 SF/yr

Available Spaces

Suite	Size (SF)	Lease Type	Lease Rate	Description
Suite 110	2,297 SF	Full Service	\$17.00 SF/yr	-