

# COMMERCE PLAZA I

2809 EMERYWOOD PARKWAY, HENRICO, VA 23294



**NOW LEASING | OFFICE SPACE | 85 SF - 8,294 SF**



ANDY WALSH  
President/Principal Broker  
804.308.1603  
AndyW@sugaroak.com

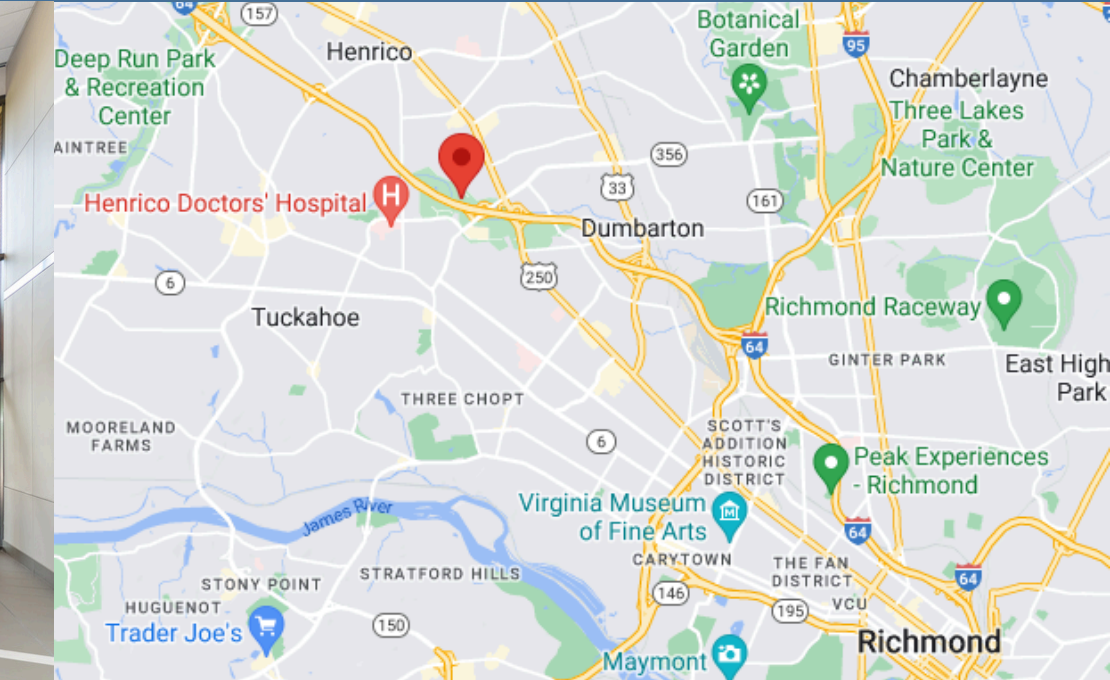
ALLAN SHARRETT  
Vice President, Sales/Leasing  
804.901.4454  
AllanS@sugaroak.com

# COMMERCE PLAZA I

2809 EMERYWOOD PARKWAY, HENRICO, VA 23294



## PROPERTY HIGHLIGHTS



- **FIVE-STORY OFFICE BUILDING WITH A TWO-STORY ATRIUM LOBBY**
- Recently renovated lobby and directory board
- Convenient to restaurants/services/shopping
- Abundant parking (4.18/1,000 sf)
- Building eyebrow signage visible from I-64
- Competitive lease rates
- Conveniently located near W. Broad Street & Glenside Drive at I-64

# COMMERCE PLAZA I

2809 EMERYWOOD PARKWAY, HENRICO, VA 23294



## LOBBY INTERIOR



[www.sugaroak.com](http://www.sugaroak.com) | 2809 Emerywood Pkwy, #110 | Richmond, VA 23294 | 804.956.3448

ANDY WALSH  
President/Principal Broker  
804.308.1603  
[AndyW@sugaroak.com](mailto:AndyW@sugaroak.com)

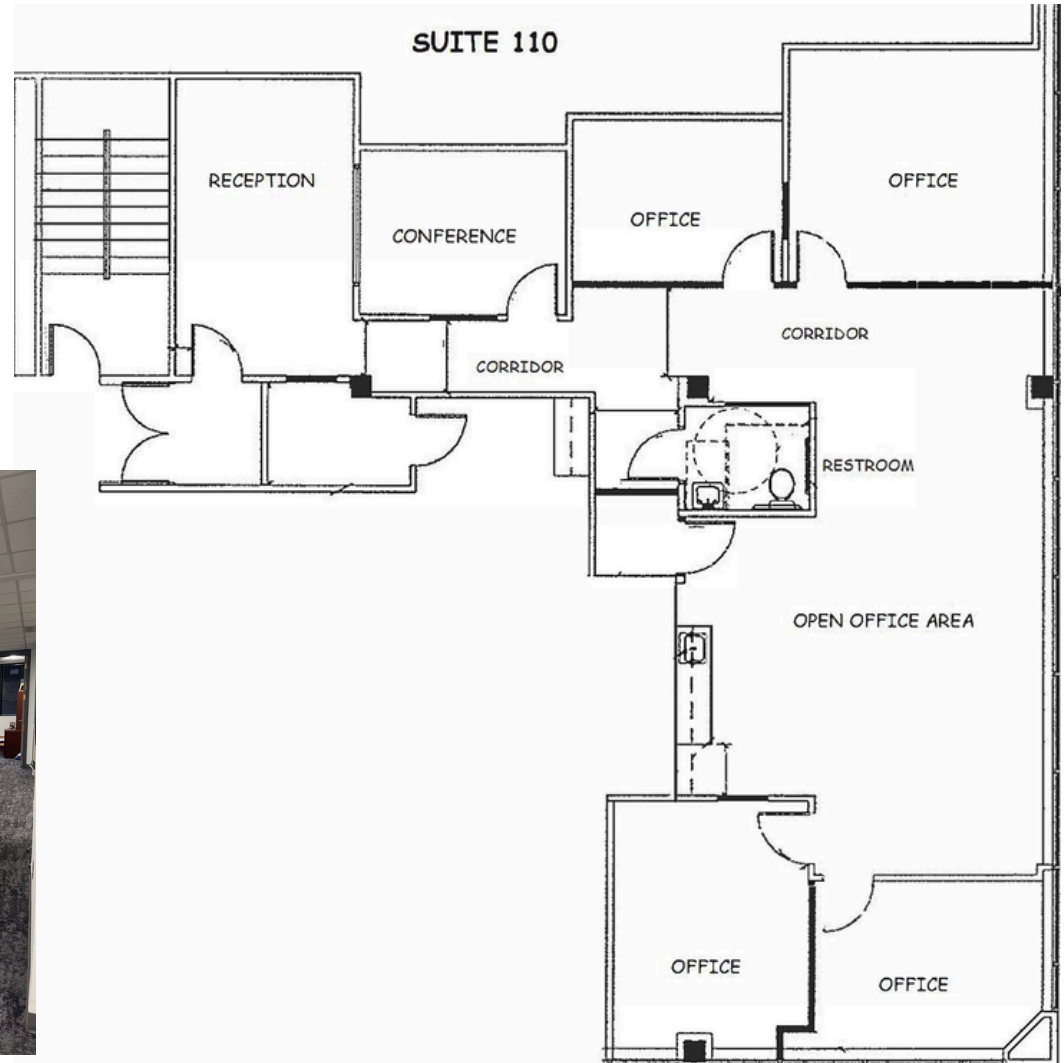
ALLAN SHARRETT  
Vice President, Sales/Leasing  
804.901.4454  
[AllanS@sugaroak.com](mailto:AllanS@sugaroak.com)

# COMMERCE PLAZA I

2809 EMERYWOOD PARKWAY, HENRICO, VA 23294



## SUITE 110 - 1,970 SF



[www.sugaroak.com](http://www.sugaroak.com) | 2809 Emerywood Pkwy, #110 | Richmond, VA 23294 | 804.956.3448

ANDY WALSH  
President/Principal Broker  
804.308.1603  
AndyW@sugaroak.com

ALLAN SHARRETT  
Vice President, Sales/Leasing  
804.901.4454  
AllanS@sugaroak.com

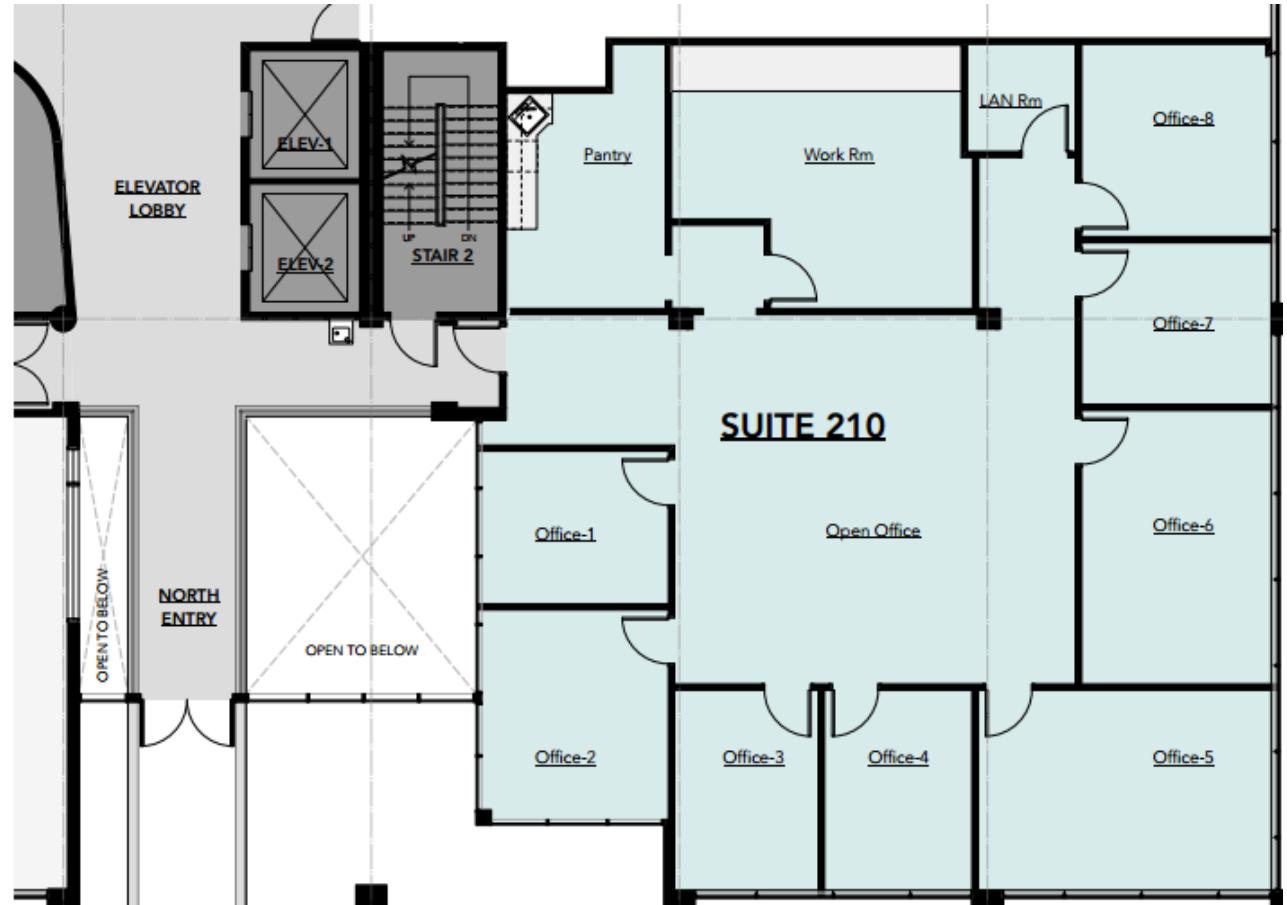


# COMMERCE PLAZA I

2809 EMERYWOOD PARKWAY, HENRICO, VA 23294



## SUITE 210 - 3,121 SF



Suite 200 & 210 can be combined for a total of 5,970 SF

# COMMERCE PLAZA I

2809 EMERYWOOD PARKWAY, HENRICO, VA 23294

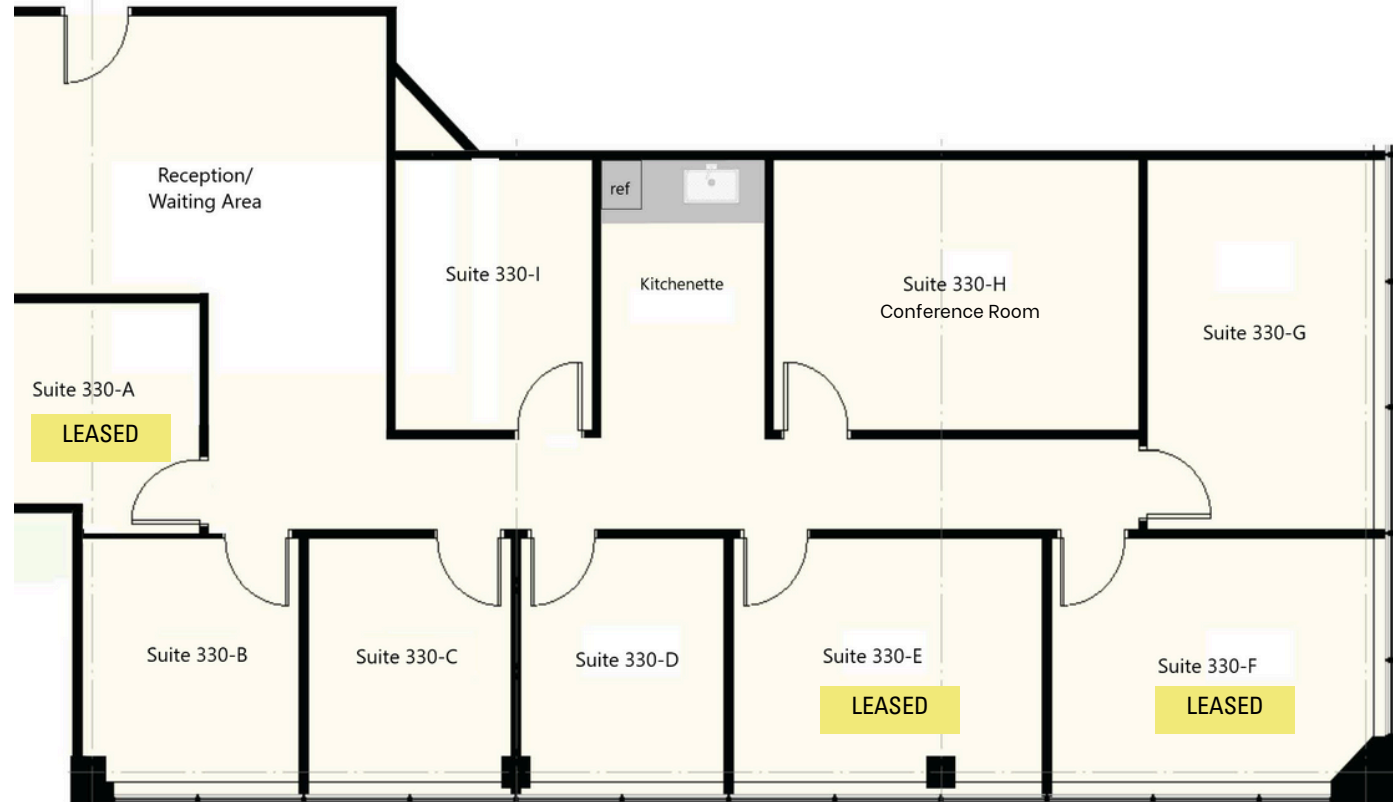


## SUITE 330



### PRICING

- Suite A - \$600
- Suite B - \$750
- Suite C - \$750
- Suite D - \$750
- Suite E - \$850
- Suite F - \$950
- Suite G - \$950
- Suite I - \$650

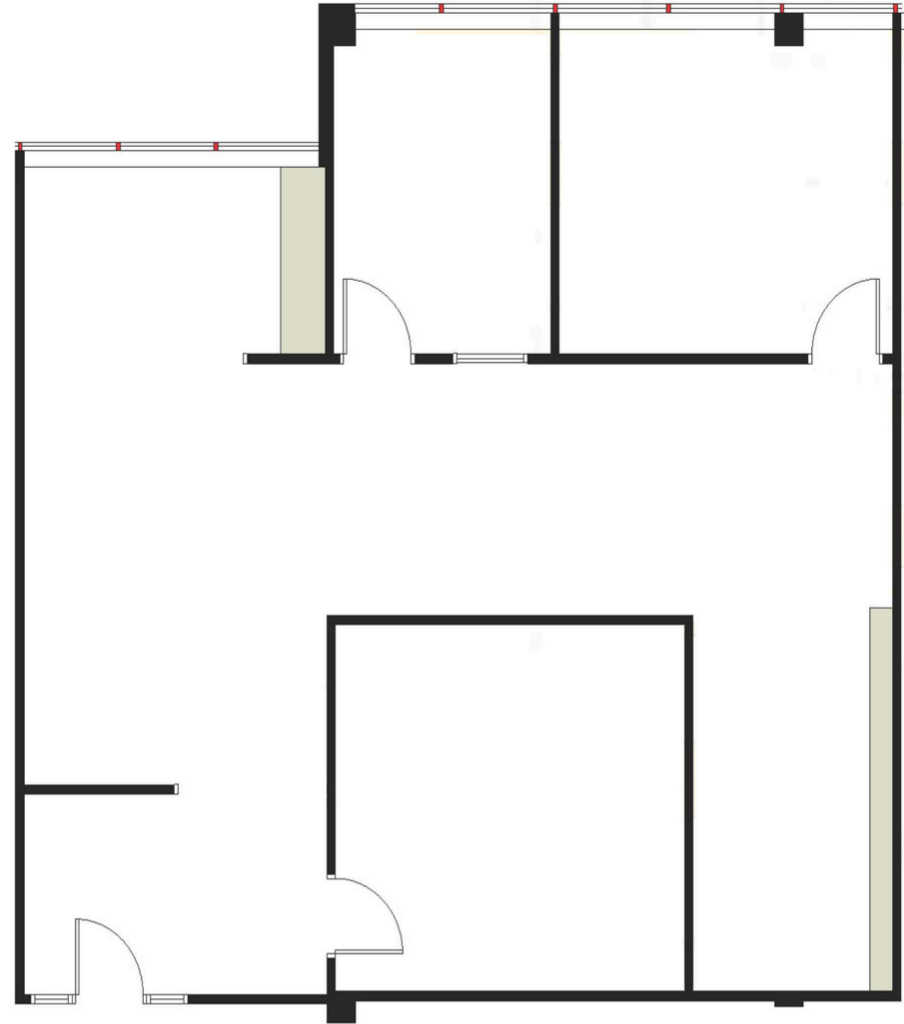


# COMMERCE PLAZA I

2809 EMERYWOOD PARKWAY, HENRICO, VA 23294



## SUITE 380 - 1,650 SF



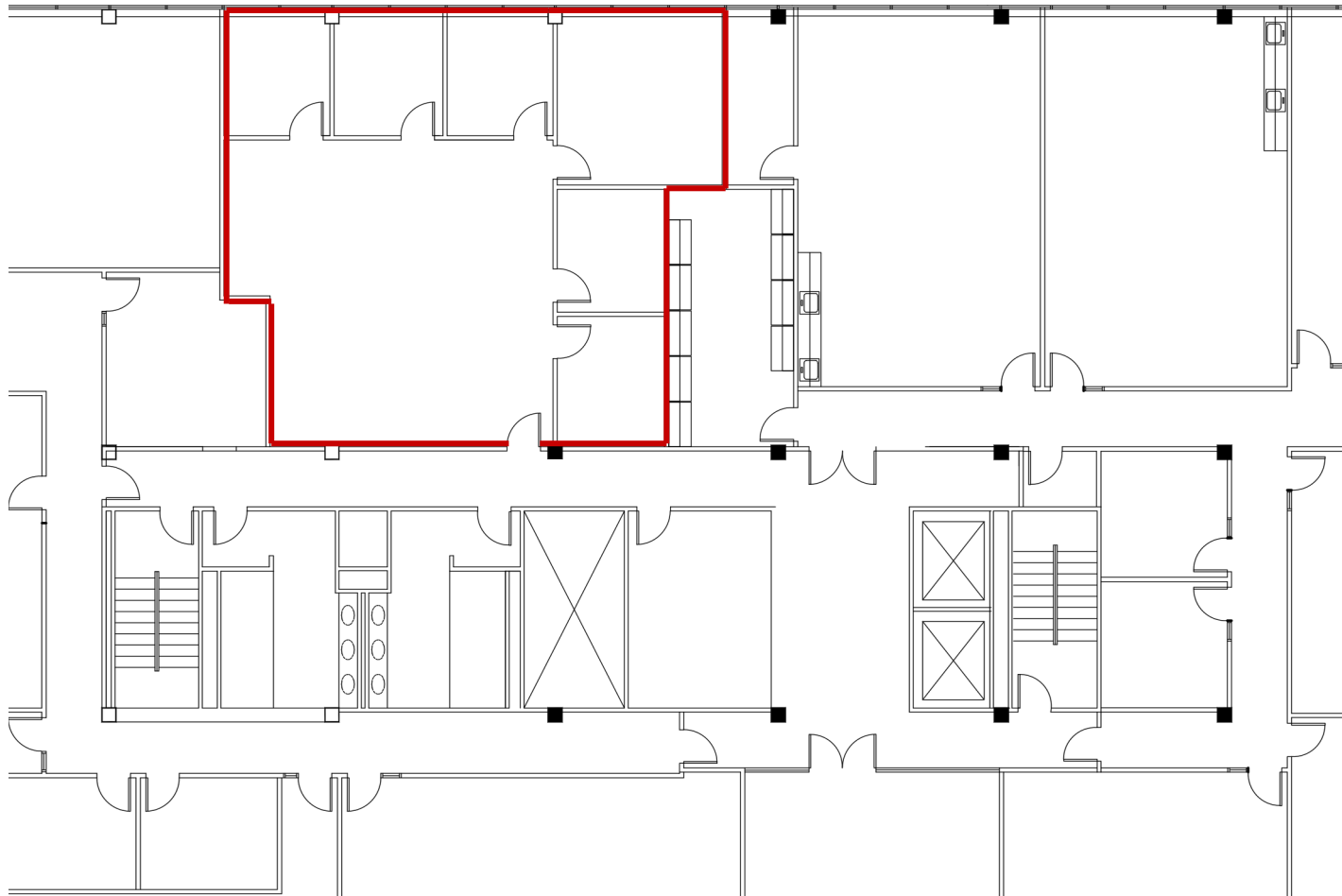


# COMMERCE PLAZA I

2809 EMERYWOOD PARKWAY, HENRICO, VA 23294



## SUITE 540 - 1,732 SF



[www.sugaroak.com](http://www.sugaroak.com) | 2809 Emerywood Pkwy, #110 | Richmond, VA 23294 | 804.956.3448

ANDY WALSH  
President/Principal Broker  
804.308.1603  
AndyW@sugaroak.com

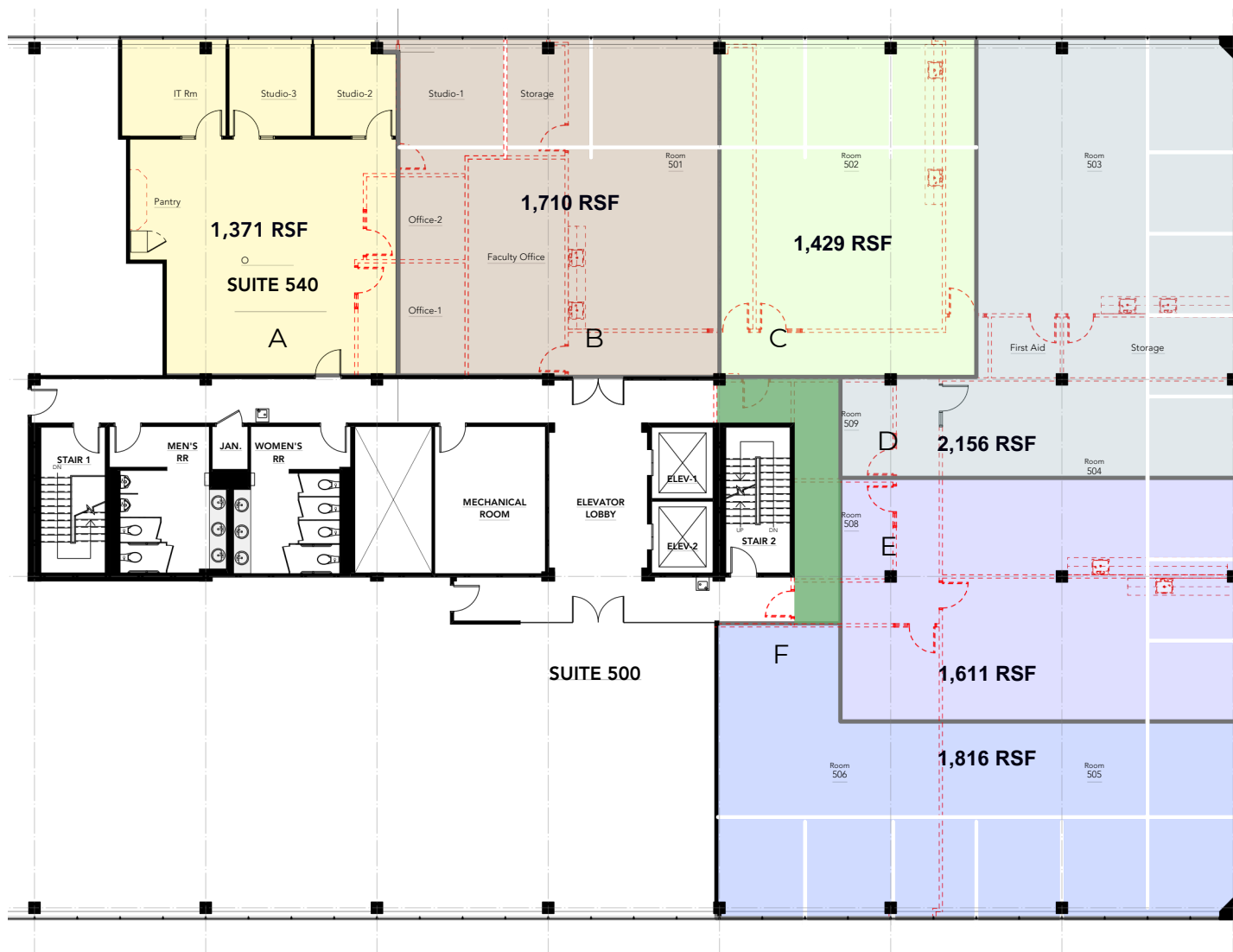
ALLAN SHARRETT  
Vice President, Sales/Leasing  
804.901.4454  
AllanS@sugaroak.com

# COMMERCE PLAZA I

2809 EMERYWOOD PARKWAY, HENRICO, VA 23294



**SUITE 500-505,508 | 1,371 - 8,294 SF | MEDICAL SPACE**



www.sugaroak.com | 2809 Emerywood Pkwy, #110 | Richmond, VA 23294 | 804.956.3448

ANDY WALSH  
 President/Principal Broker  
 804.308.1603  
 AndyW@sugaroak.com

ALLAN SHARRETT  
 Vice President, Sales/Leasing  
 804.901.4454  
 Allans@sugaroak.com