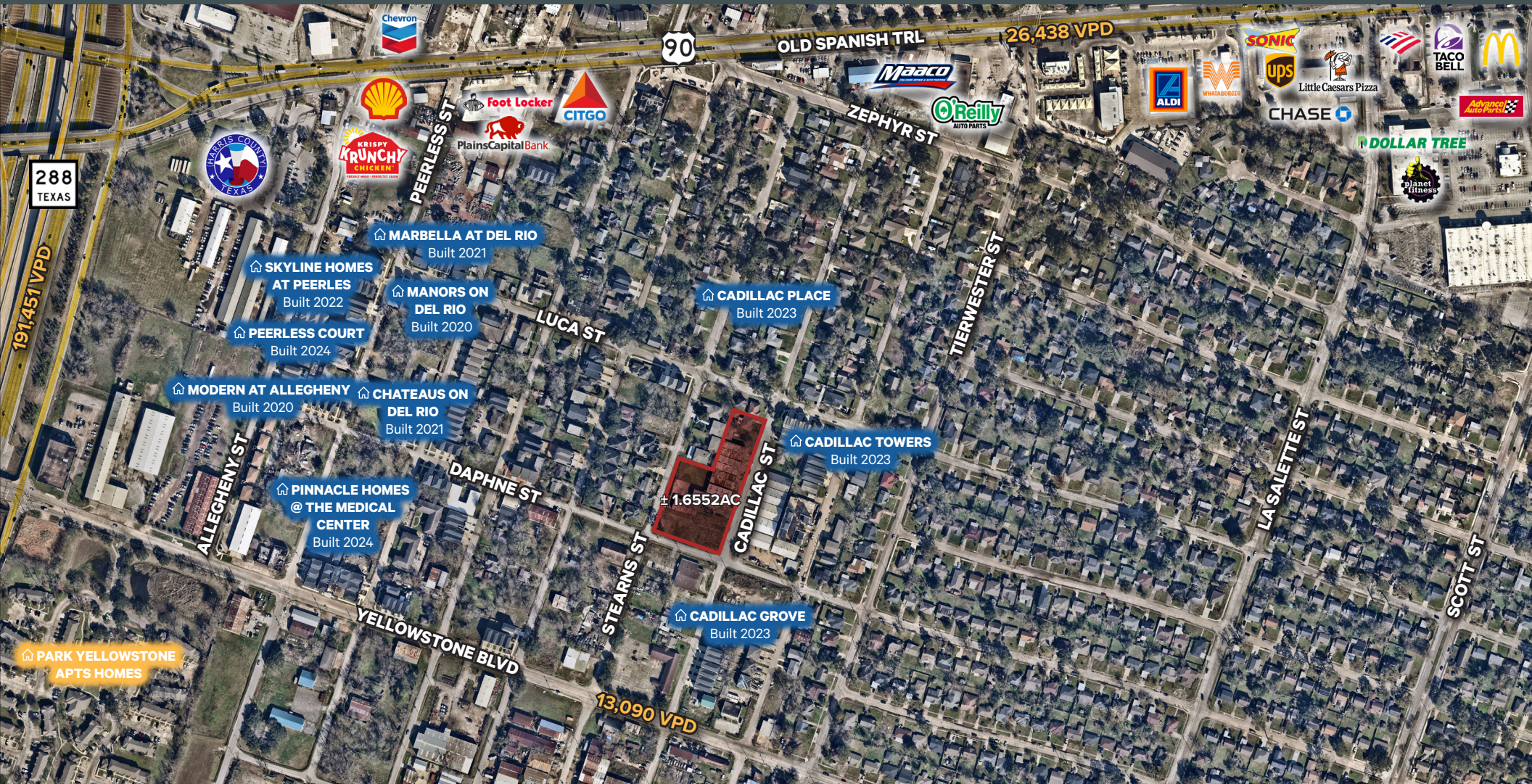


# For Sale 6710 Cadillac Street

Houston, TX 77021

±1.6552 acres

EXECUTE CONFIDENTIALITY AGREEMENT



Barrett Von Blon

First Vice President

T +1 713 577 1777

barrett.vonblon@cbre.com

Chris Bergmann Jr.

Executive Vice President

T +1 713 577 3847

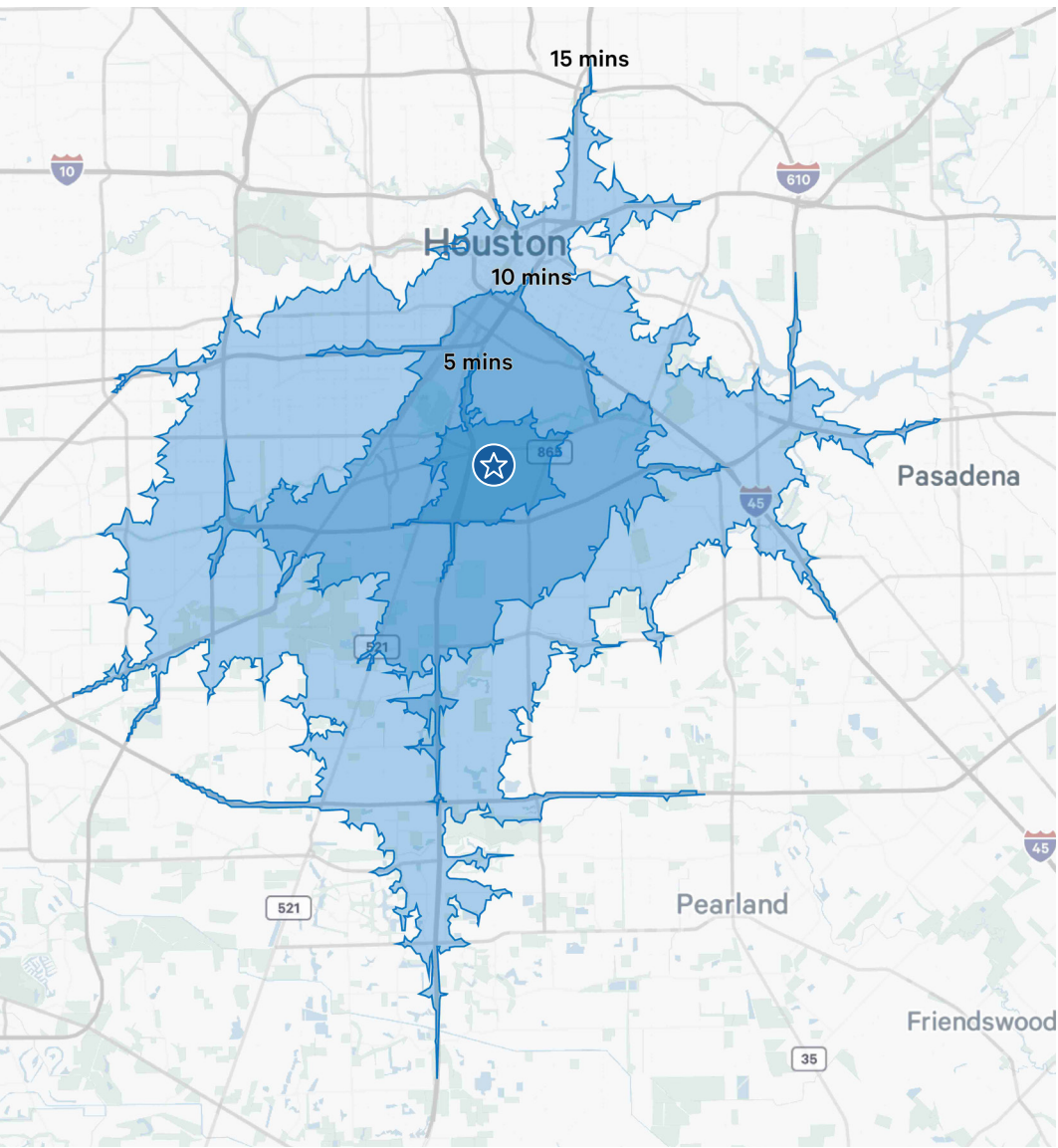
chris.bergmann@cbre.com

**CBRE**

CAPITAL MARKETS | LAND SERVICES



# Commute & Demographics



Drive Times	Minutes
TMC	5
Downtown Houston	10
Galleria/Uptown	16

## Property Information

### Location

• 6710 Cadillac Street Houston, TX 77021

### Property Information

- ±1.6552 acres
- Outside of floodplain
- No pipelines through tract
- Detention likely required with redevelopment
- Utilities via City of Houston
- Frontage on Cadillac St, Daphne St, & Stearns St
- Total tax rate: \$2.092362 (2024)
- HISD (Thompson Elementary, Cullen Middle, Yates High)

### Price

Call Broker for Pricing



## Commute

Traffic Counts	Vehicles Per Day
Yellowstone Blvd	13,090
Old Spanish Trail/Hwy 90	26,482
Hwy 288	191,451
610 (The Loop)	188,566



## 2024 Demographics

Population Summary	1-Miles	3-Miles	5-Miles
Population	14,210	143,763	429,161
Median Age	37.0	32.1	34.5
Average Household Income	\$69,498	\$93,705	\$119,270
Average Home Value	\$321,777	\$405,012	\$527,986
College Degree or Higher	33.8%	50.8%	52%



# Property Aerial





# Neighborhood Aerial





# For Sale

# 6710 Cadillac St

# Houston, TX 77021

EXECUTE CONFIDENTIALITY AGREEMENT

[www.cbre.com](http://www.cbre.com)

## Contact Us

---

### Barrett Von Blon

First Vice President

T +1 713 577 1777

[barrett.vonblon@cbre.com](mailto:barrett.vonblon@cbre.com)

### Chris Bergmann Jr.

Executive Vice President

T +1 713 577 3847

[chris.bergmann@cbre.com](mailto:chris.bergmann@cbre.com)

CAPITAL MARKETS | LAND SERVICES

# CBRE

© 2023 CBRE, Inc. All rights reserved. This information has been obtained from sources believed reliable, but has not been verified for accuracy or completeness. You should conduct a careful, independent investigation of the property and verify all information. Any reliance on this information is solely at your own risk. CBRE and the CBRE logo are service marks of CBRE, Inc. All other marks displayed on this document are the property of their respective owners, and the use of such logos does not imply any affiliation with or endorsement of CBRE. Photos herein are the property of their respective owners. Use of these images without the express written consent of the owner is prohibited.