

Industrial | For Sale



5250

Solar Drive

Unit 27

Mississauga, ON

NEW INDUSTRIAL CONDO!

1980 SQ.FT



Property Details



Features

ADDRESS	5250 SOLAR DRIVE UNIT 27
PRICE	Please Contact
OCCUPANCY	TBD
T.M.I	\$6.53
LOADING DOOR	1 Drive-in
HEATING + COOLING	HVAC - 6 Tones
ZONING	E1
POWER	600 AMPS

- New industrial condo units
- 27' ceilings
- Just minutes away from Highways 401, 410, 427 &
- Pearson Airport
- Easy access to public transportation/labov
- Located in Airport Corporate Centre, highly soughtafter
- Node of Mississauga
- E1 zoning permits wide variety of employment uses
- Tons of amenities nearby
- Ready for possession
- All permits have been closed by city
- Bathroom compelled.

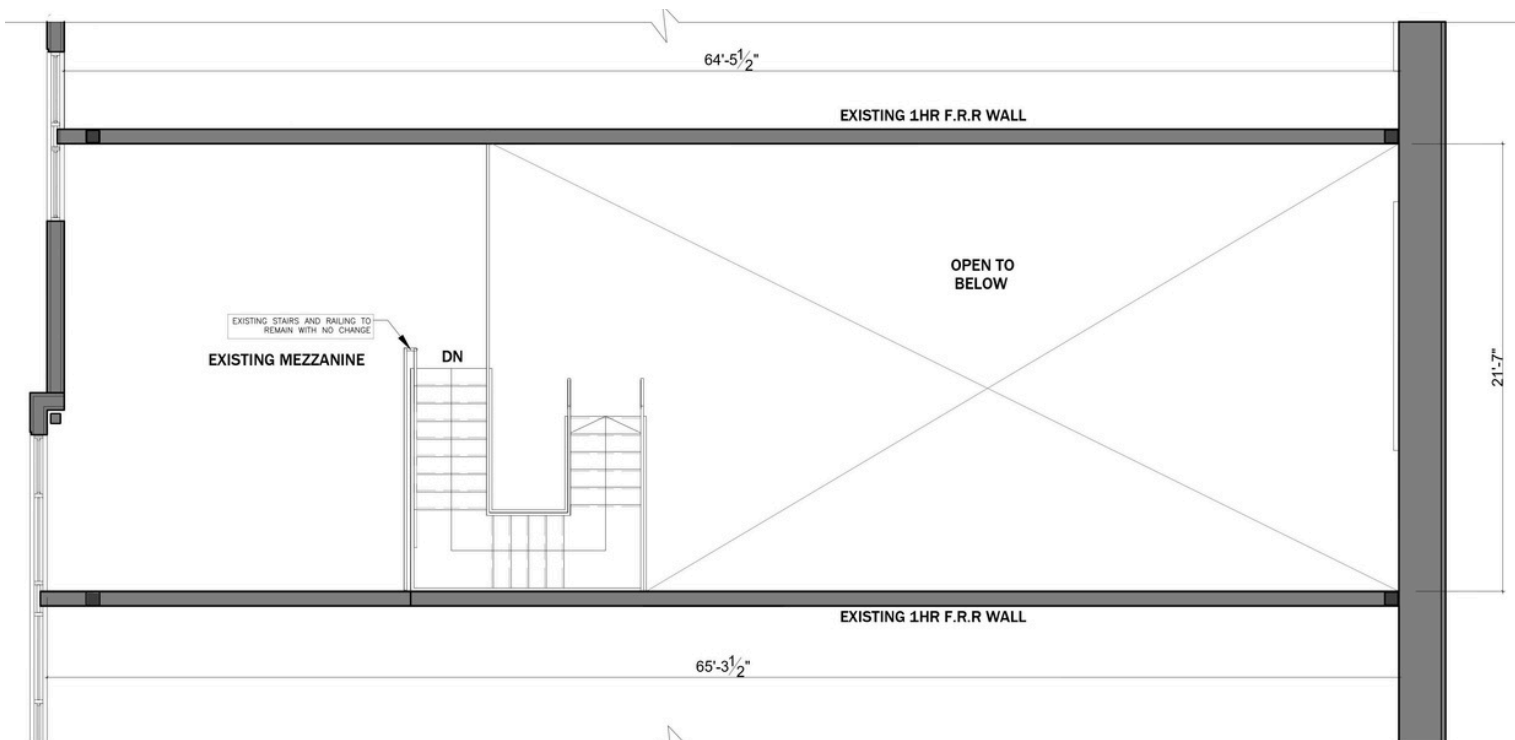
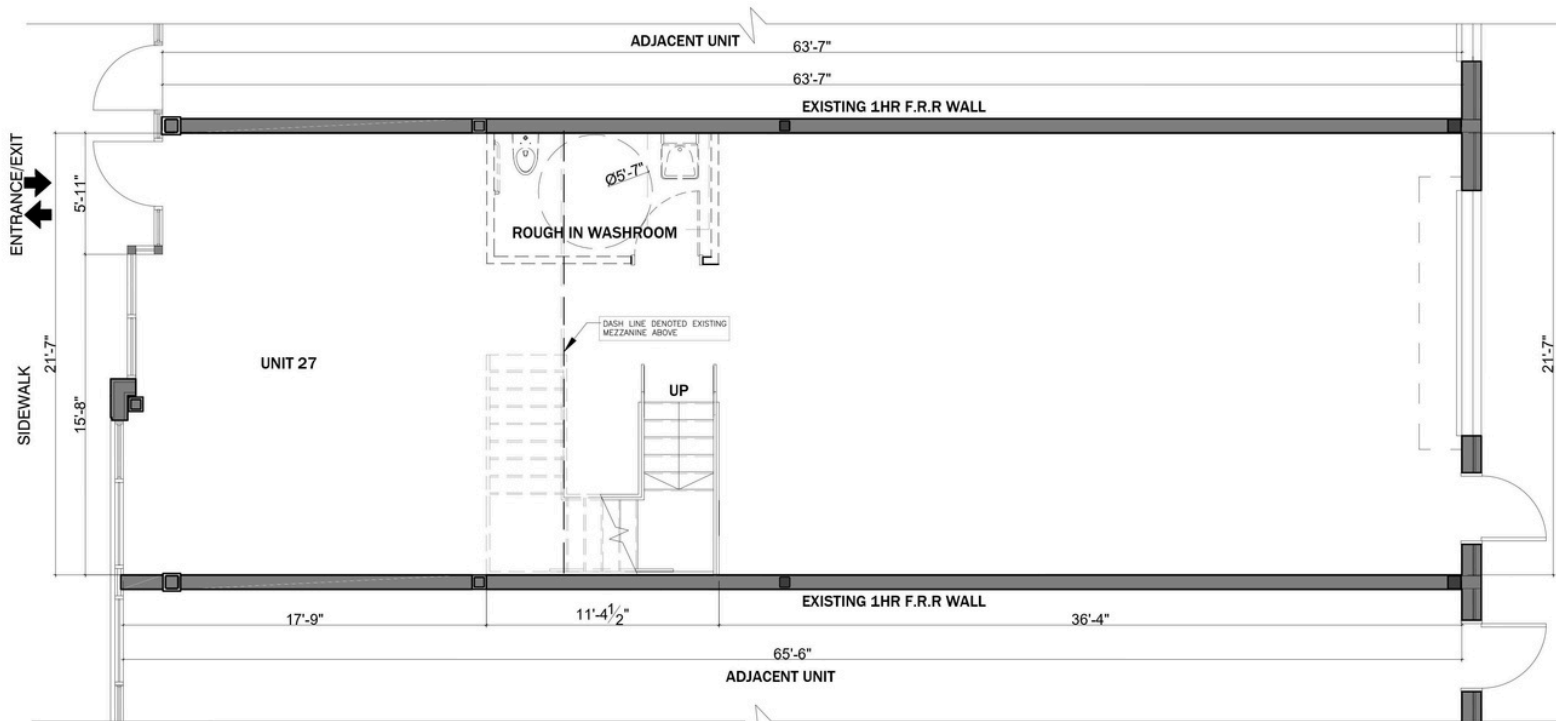
Property Photos



Property Photos



Property Layout



Amenities



E1 ZONING

PERMITTED USES

OFFICE

- Medical Office
- Office

BUSINESS ACTIVITIES

- Manufacturing Facility
- Science and Technology Facility
- Warehouse/Distribution Facility

COMMERCIAL

- Commercial School
- Financial Institution
- Veterinary Clinic

HOSPITALITY

- Overnight Accommodation

OTHER

- Active Recreational Use
- Recreational Establishment
- University/College
- Courier/Messenger Service.

And many others.

Andre Joesph

Commercial Sales Representative

- 647-286-0785
905-766-9066
- ajoseph@kwcommercial.com
- 7145 West Credit Ave Building 1
Suite 100 Mississauga, ON L5N 6J7

Hassan Javeed

Commercial Sales Representative

- 647-917-2942
905-766-9065
- hassanjaveed@kw.com
- 7145 West Credit Ave Building 1
Suite 100 Mississauga, ON L5N 6J7