

THE PADDOCKS

2685 PEACHTREE PARKWAY

SUWANEE, GA 30024



FOR LEASE

Up to 20,429 SF MEDICAL | OFFICE

RICHARD SMITH, JR., CCIM

richard.smith@lee-associates.com

D: 404.442.2833 | M: 404.789.8788

JOSTIN CALO

jcalo@lee-associates.com

D: 404.442.2844 | M: 770.910.4547

**LEE &
ASSOCIATES**
COMMERCIAL REAL ESTATE SERVICES

BUILDING HIGHLIGHTS

Explore a prime opportunity at Paddocks Medical Office, a 60,166 SF property in Suwanee, GA. Located on Peachtree Pkwy, this modern medical office complex offers excellent visibility and access. With a growing local economy and rising healthcare demand, it's an ideal investment for medical groups seeking long-term growth.

TOTAL BLDG SF 60,166 RSF

AVAILABLE SF

First Floor - 5,100 SF
Second Floor - 3,100 to 19,631 SF
Third Floor - 5,836 SF

YEAR BUILT

2021

PARKING

232 Striped Spaces: 3.87 per
1,000 SF

ACCESSIBILITY

2 "Star of Life" Elevators

COMMENTS

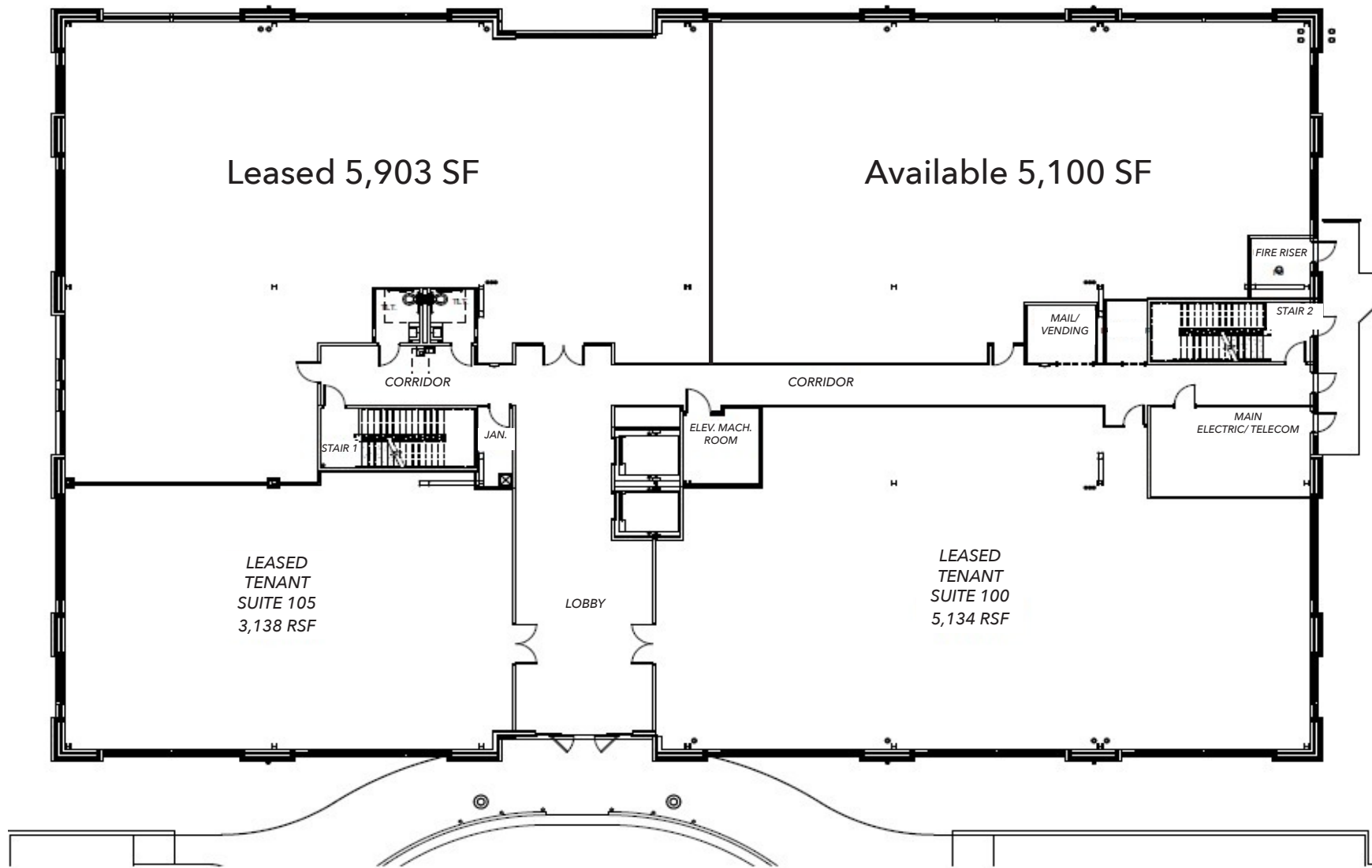
- TI Allowance
- ASC Capable Building
- 2 Miles from Emory Johns Creek Hospital



THE PADDOCKS
2685 PEACHTREE PARKWAY



FLOOR PLAN | First Floor



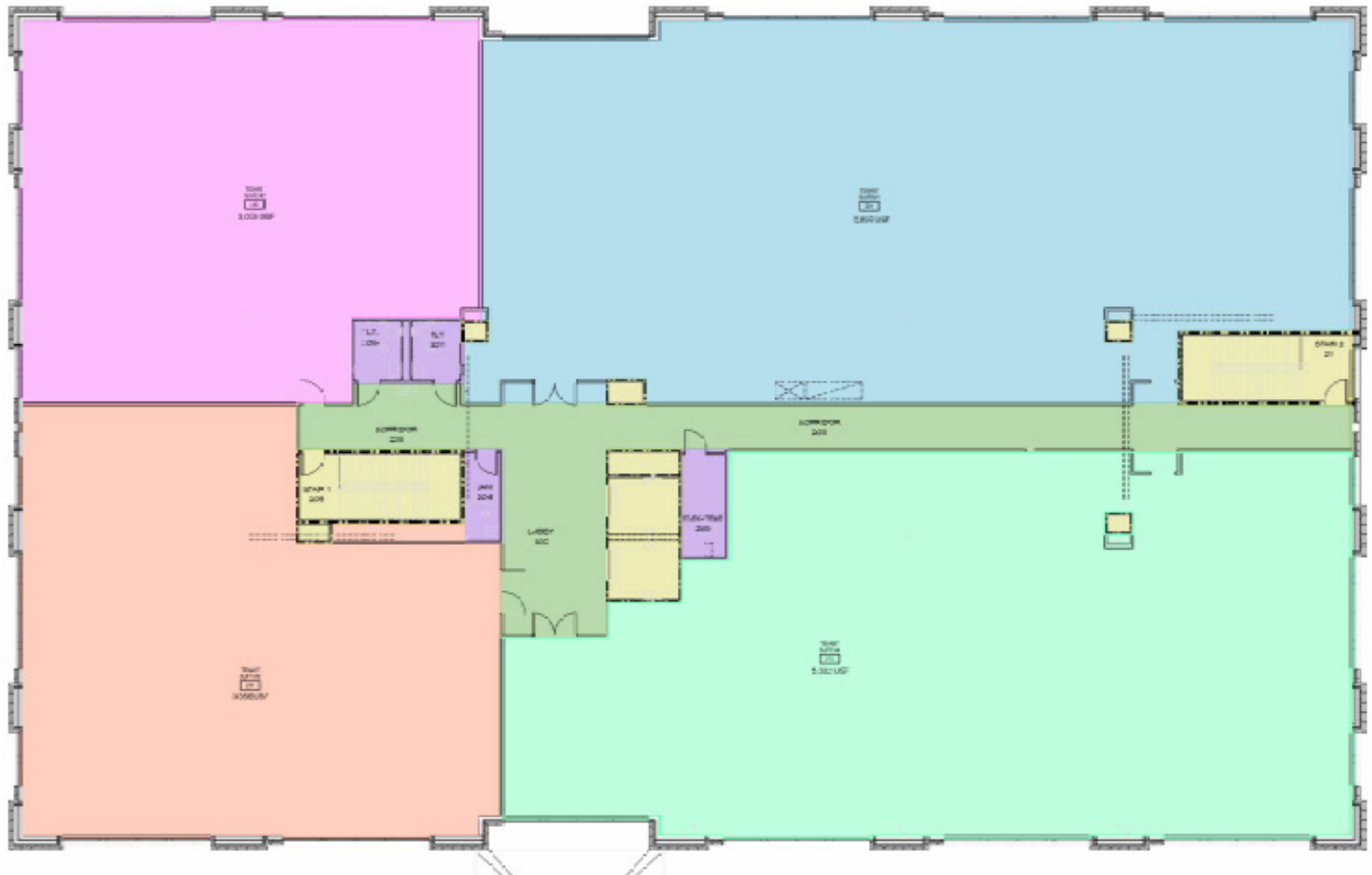
RICHARD SMITH, JR., CCIM
richard.smith@lee-associates.com
D: 404.442.2833
M: 404.789.8788

JOSTIN CALO
jcalo@lee-associates.com
D: 404.442.2844
M: 770.910.4547



THE PADDOCKS
2685 PEACHTREE PARKWAY

FLOOR PLAN | Second Floor



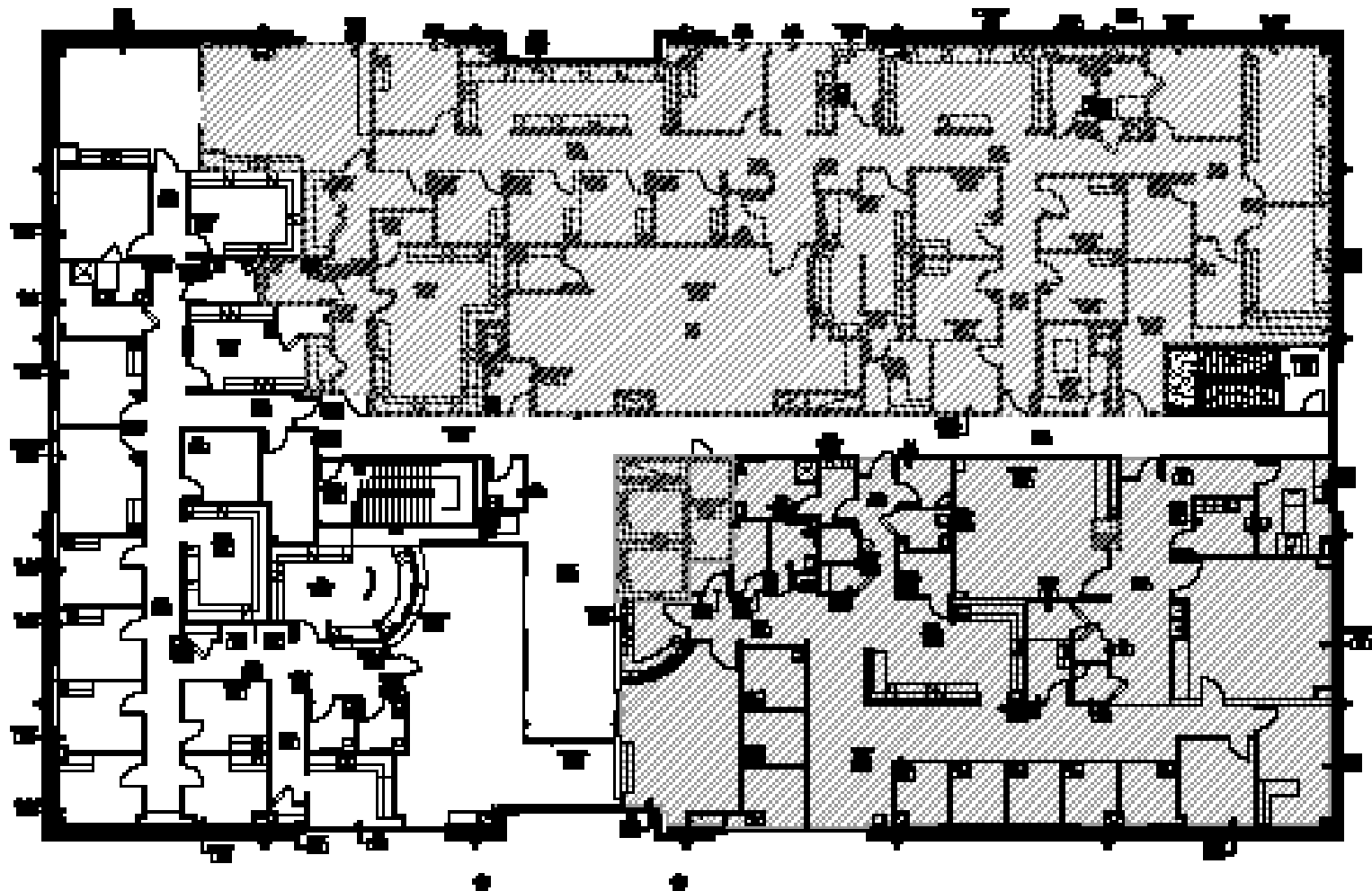
RICHARD SMITH, JR., CCIM
richard.smith@lee-associates.com
D: 404.442.2833
M: 404.789.8788

JOSTIN CALO
jcalo@lee-associates.com
D: 404.442.2844
M: 770.910.4547



THE PADDOCKS
2685 PEACHTREE PARKWAY

FLOOR PLAN | Third Floor



RICHARD SMITH, JR., CCIM
richard.smith@lee-associates.com
D: 404.442.2833
M: 404.789.8788

JOSTIN CALO
jcalo@lee-associates.com
D: 404.442.2844
M: 770.910.4547



THE PADDOCKS
2685 PEACHTREE PARKWAY

LOCATION & DEMOGRAPHICS



NEARBY HOSPITALS

2.7 miles	Emory Johns Creek Hospital via Brookwood Rd & McGinnis Ferry Rd
7.8 miles	Northside Hospital Forsyth via GA-141 N & US-19 N



POPULATION

	2024	2029
1 mile	8,546	9,363
3 miles	65,028	68,102
5 miles	184,011	191,749



HOUSEHOLDS

	2024	2029
1 mile	2,711	2,948
3 miles	20,695	21,703
5 miles	60,413	63,194



AVG. HOUSEHOLD INCOME

	2024	2029
1 mile	\$192,038	\$215,235
3 miles	\$215,809	\$239,855
5 miles	\$196,065	\$221,101



FOR LEASE

Up to 20,429 SF MEDICAL OFFICE

RICHARD SMITH, JR., CCIM

richard.smith@lee-associates.com

D: 404.442.2833

M: 404.789.8788

JOSTIN CALO

jcalo@lee-associates.com

D: 404.442.2844

M: 770.983.4547



THE PADDOCKS
2685 PEACHTREE PARKWAY

THE PADDOCKS

2685 PEACHTREE PARKWAY

SUWANEE, GA 30024



FOR LEASE

Up to 20,429 SF MEDICAL | OFFICE

±2 MILES SOUTH | EMORY JOHNS CREEK HOSPITAL
±7 MILES NORTH | NORTHSIDE HOSPITAL FORSYTH

RICHARD SMITH, JR., CCIM

richard.smith@lee-associates.com
D: 404.442.2833 | M: 404.789.8788

JOSTIN CALO

jcalo@lee-associates.com
D: 404.442.2844 | M: 770.910.4547

LEE & ASSOCIATES
COMMERCIAL REAL ESTATE SERVICES