

337
ELIZABETH ST.



ATLANTA | INMAN PARK | ATLANTA
INMAN PARK | ATLANTA

AVAILABILITY

5,960 SF OFFICE SPACE
736 - 2,066 SF RESTAURANT SPACE

THE NEIGHBORHOOD

Located on the eastside of town, the **INMAN PARK** neighborhood was Atlanta's first planned suburb. With several restaurants & retail shops, Inman Park is one of Atlanta's most popular neighborhoods. The Atlanta Beltline runs directly through the neighborhood generating heavy foot traffic and busy streets. On any given day of the week, you might find locals and tourists alike mingling for brunch at sidewalk cafes, sipping cocktails at lively night spots and browsing the clothing racks on display outside.



THE LOCATION



A detailed aerial map of the Inman Park area in Atlanta, Georgia. A green line highlights the Atlanta BeltLine. A yellow star icon marks the location of 337 Elizabeth St. The map includes callouts for various businesses and transit options:

- North Avenue**
- Ponce City Market**: Botiwalla, Minero's, Atrium, Honeyuckle, H&F+BURGER
- New Realm Brewing Company**
- Poncey Highland**
- two URBAN LICKS**
- Atlanta BeltLine**
- 337 ELIZABETH ST.**
- Old Fourth Ward**
- Freedom Parkway**
- N. Highland Ave.**
- Highland Ave.**
- Victory VSB 4216 Sandwich Bar**
- FRITTI**
- SAVI PROVISIONS**
- Inman Park**
- Inman Quarter**: bartaco, BEETLECAT, Orangetheory FITNESS, barcelona, Bread & Butterfly
- delbar**
- Krog Street Market**: jeni's, Superica, Fred's MEAT & BREAD, Ticonderoga Club
- Kevin Rathbun STEAK**
- SPX ALLEY**: Nina & Rafi, HAWKERS, Pour TAPROOM
- ladybird**
- BRIDGER PROPERTIES**

OFFICE SPACE

SIZE : 5,960 SF
AVAILABLE : IMMEDIATELY
PARKING : ON-STREET

EXISTING FURNITURE CAN BE INCLUDED

RESTAURANT/BAR SPACE

SIZE : 736 - 2,066 SF

STEPS FROM THE
ATLANTA BELTLINE

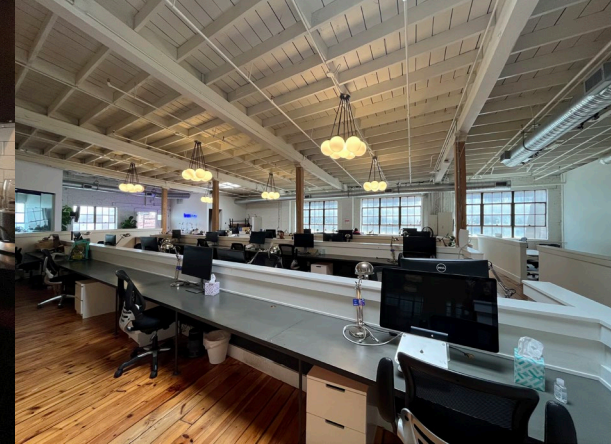
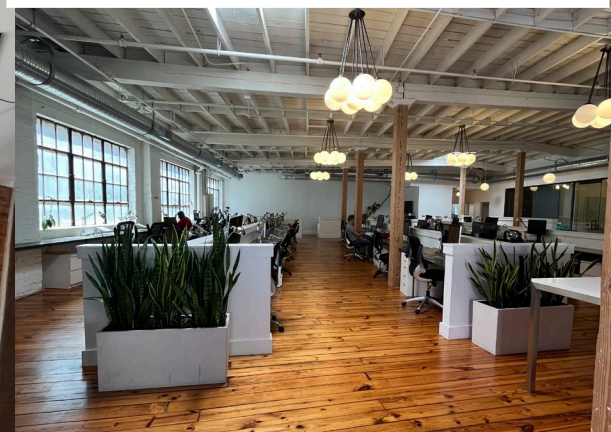




OFFICE SPACE

SIZE : 5,960 SF
AVAILABLE : IMMEDIATELY
PARKING : ON-STREET

EXISTING FURNITURE CAN BE INCLUDED





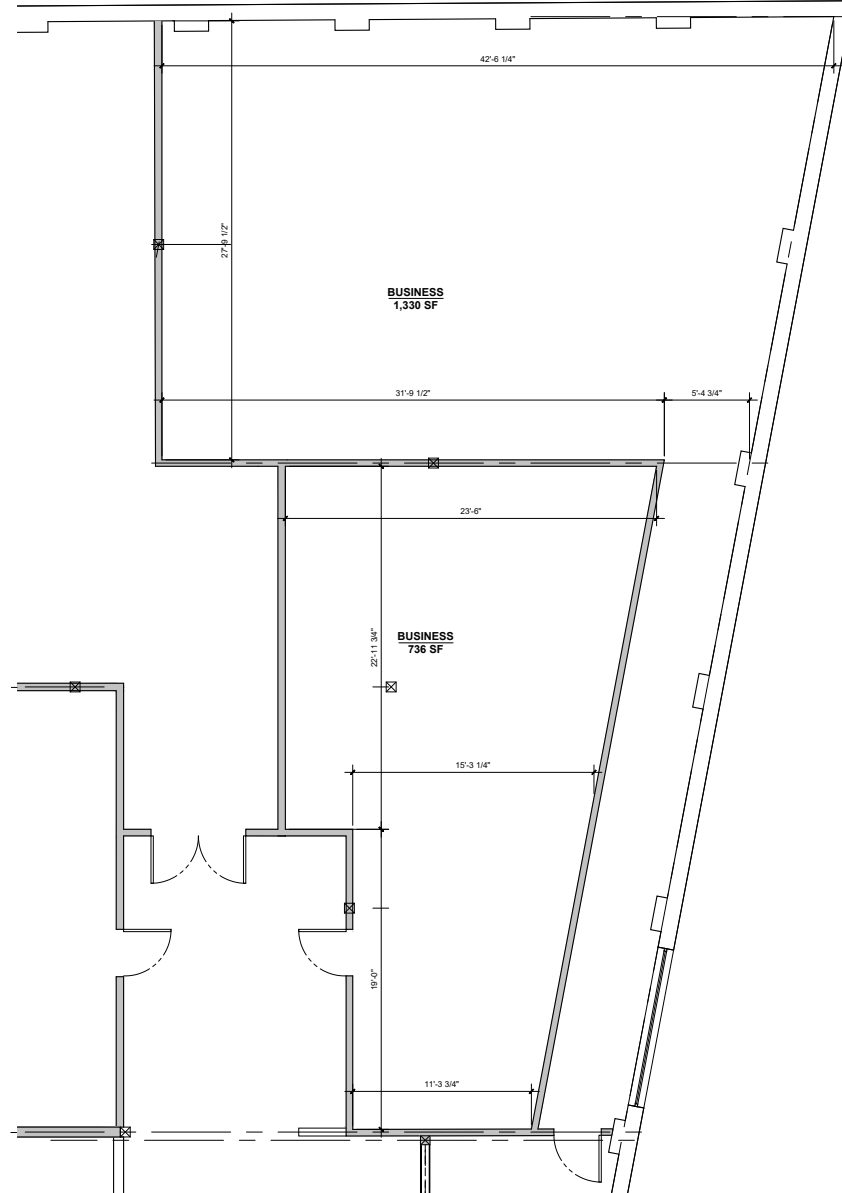
RETAIL SITE PLAN

FLOOR PLAN GENERAL NOTES

GENERAL NOTES:	
<ul style="list-style-type: none"> • ALL DIMENSIONS ARE FROM FINISH FACE OF DRYWALL (INTERIOR), FINISH MATERIAL (EXTERIOR AND EXISTING), OR CENTERLINE OF STEEL - U.N.O. • ALL WALL TYPES TO BE P-1 UNLESS NOTED OTHERWISE 	

FLOOR PLAN LEGEND

SYMBOL	DESCRIPTION
	EXISTING CONSTRUCTION TO REMAIN
	NEW CONSTRUCTION



Size: 736-2066 sf



LOADING DOCK

LOOKING INTO THE COURTYARD FROM ELIZABETH ST.



ENTRANCE
HERE
←



CONTACT

SHELBI BODNER

shelbi.bodner@bridger-properties.com

770.778.0197

