

FOR SALE 1,638 SF OFFICE

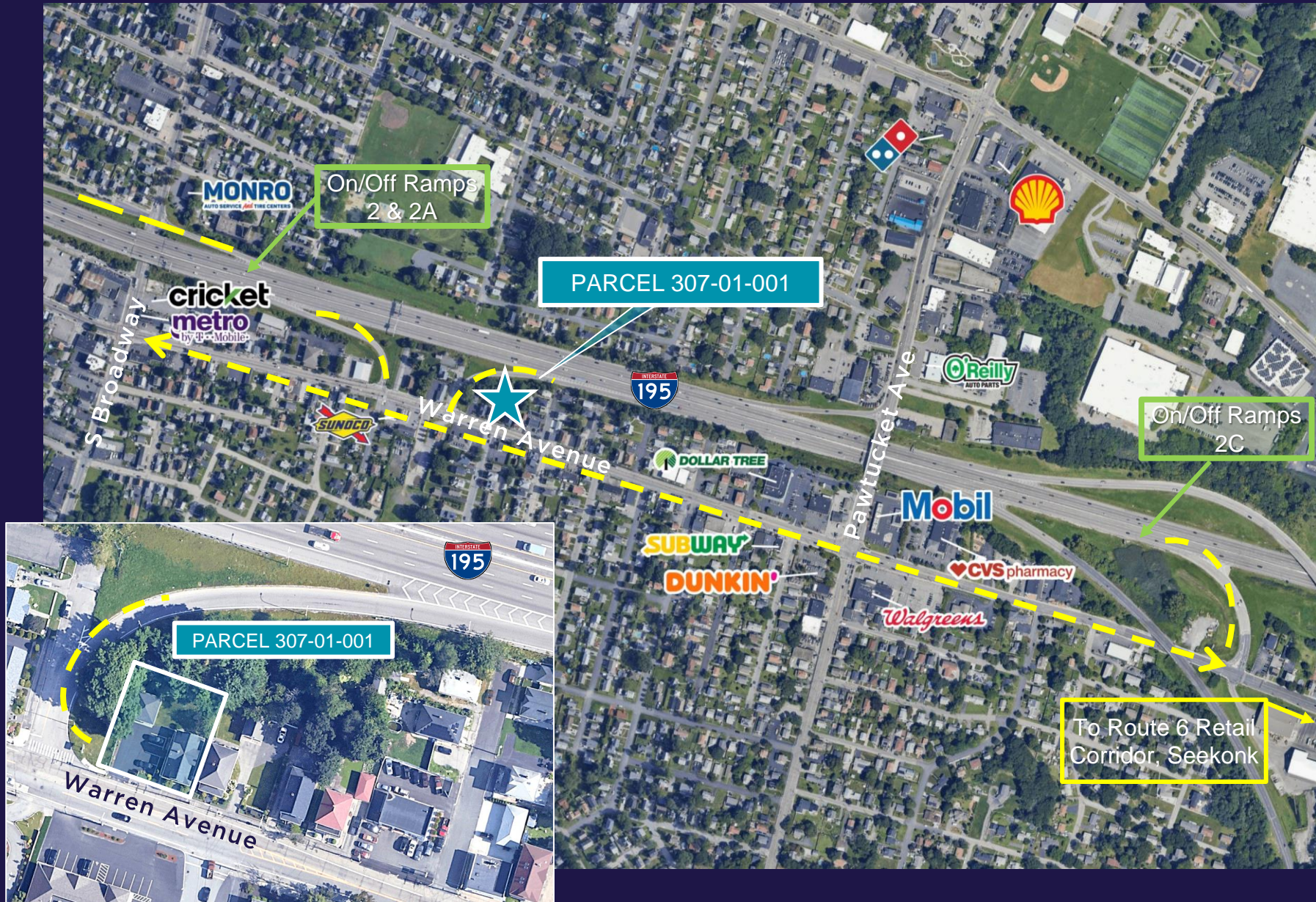
468 WARREN AVE

EAST PROVIDENCE, RI



HAYES & SHERRY

TRADE AREA



468 WARREN AVENUE, EAST PROVIDENCE



PROPERTY FEATURES

468 WARREN AVENUE, EAST PROVIDENCE



BUILDING SIZE

1,638 SF



YEAR BUILT

1930



SITE AREA

0.20 AC



SPACE AVAILABLE

1,638 SF



PARKING

6 Spaces



FLOOR

2 Story



ZONE

C1 Warren Avenue
Overlay District



TAXES

\$4.07 / SF

HIGHLIGHTS

- VERY VISUALLY APPEALING
- EASY ACCESS TO 195
- PLENTY OF EASY PARKING
- MODERN INTERIOR
- LOTS OF NATURAL LIGHT
- HARDWOOD FLOORS
- HEAVY DAYTIME FOOT TRAFFIC
- ACCESS TO BUS TRANSIT

CONTACT

DEREK BRAZEAU
Broker

+1 401 273 2052

dbrazeau@hayessherry.com

©2024 Cushman & Wakefield. All rights reserved. The material in this presentation has been prepared solely for information purposes and is strictly confidential. Any disclosure, use, copying or circulation of this presentation (or the information contained within it) is strictly prohibited, unless you have obtained Cushman & Wakefield's prior written consent. The views expressed in this presentation are the views of the author and do not necessarily reflect the views of Cushman & Wakefield. Neither this presentation nor any part of it shall form the basis of, or be relied upon in connection with any offer, or act as an inducement to enter into any contract or commitment whatsoever. NO REPRESENTATION OR WARRANTY IS GIVEN, EXPRESS OR IMPLIED, AS TO THE ACCURACY OF THE INFORMATION CONTAINED WITHIN THIS PRESENTATION, AND CUSHMAN & WAKEFIELD IS UNDER NO OBLIGATION TO SUBSEQUENTLY CORRECT IT IN THE EVENT OF ERRORS.



HAYES & SHERRY