

TOK

COMMERCIAL

19560 LOWER PLEASANT RIDGE ROAD

INDUSTRIAL PROPERTY FOR SALE OR LEASE | CALDWELL, ID 83607



SALE PRICE REDUCED!

Prime industrial owner-user opportunity in industrial/ag hub, just south of the Simplot Boulevard corridor.

Just a short, 10-minute drive to Interstate 84 and downtown Caldwell.

M-1 zoning allows for a variety of light industrial uses.

Desirable, mid-sized industrial building equipped with 1,600 SF of office, 200 amps of single phase power, and 2 grade level doors.

Located on a 5.56 acre parcel with ample, excess land.

60 gallon artesian well and gas on site.

Warehouse is 11'7" at the lowest point and 14'6" at the highest point.

Space is now vacant and ready for immediate occupancy.

SALE PRICE:
WHSE/OFFICE
SURPLUS LAND

\$2,300,000
\$876,000 (\$219.00/SF)
\$1,424,000 (\$6.30/SF)

LEASE RATE:

Contact Agent

TOTAL BUILDING SIZE:
WAREHOUSE
OFFICE

4,000 SF
2,400 SF
1,600 SF

LOT SIZE:

5.56 Acres

EXCESS LAND:

226,193 SF

GRADE DOORS:

2 (12' x 19.5')

CLEAR HEIGHT:

11'7" - 14'6"

ZONING:

M-1

CONTACT



SAM MCCASKILL

208.947.0804

sam@tokcommercial.com

HIGHLIGHTS



DETAILS



UPDATED: 11.13.2025

THIS PROPERTY IS EXCLUSIVELY MARKETING BY TOK BOISE LLC DBA TOK COMMERCIAL

This information was obtained from sources believed reliable but cannot be guaranteed. Any opinions or estimates are used for example only.

TOKCOMMERCIAL.COM

AMPLE SURFACE STORAGE & EXPANSION OPPORTUNITY

TOK
COMMERCIAL

LOWER PLEASANT RIDGE RD



DIRECT CONNECTION EAST TO
I-84, DOWNTOWN CALDWELL
& MORE! ➔

SIMPLOT BLVD

LOWER PLEASANT RIDGE

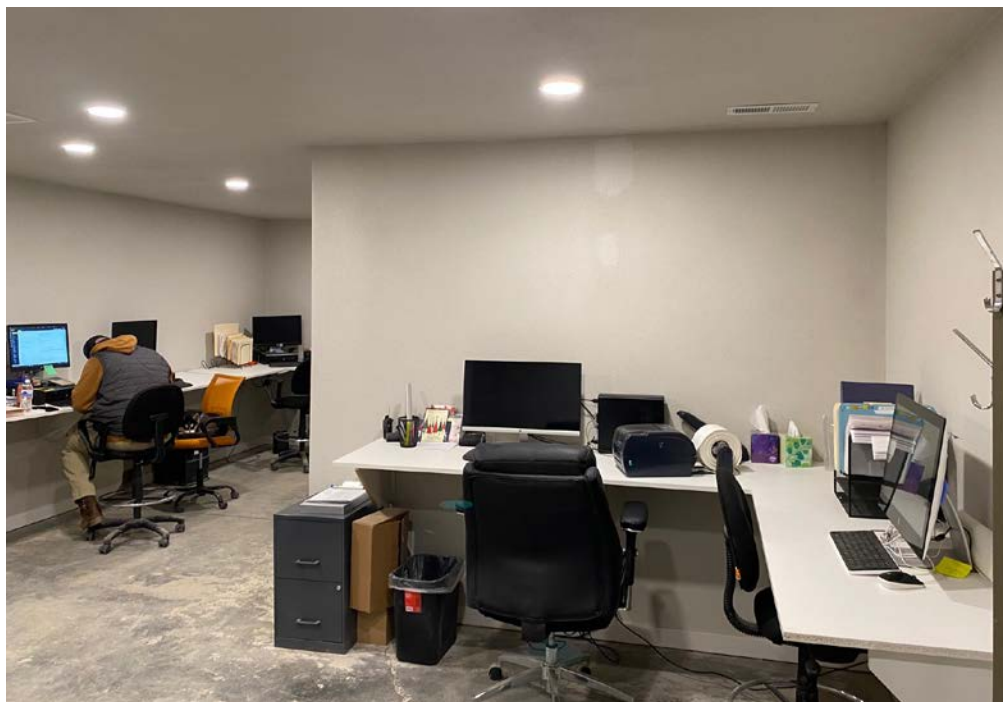


UPDATED: 11.13.2025

THIS PROPERTY IS EXCLUSIVELY MARKETING BY TOK BOISE LLC DBA TOK COMMERCIAL

This information was obtained from sources believed reliable but cannot be guaranteed. Any opinions or estimates are used for example only.

TOKCOMMERCIAL.COM



UPDATED: 11.13.2025

THIS PROPERTY IS EXCLUSIVELY MARKETING BY TOK BOISE LLC DBA TOK COMMERCIAL

This information was obtained from sources believed reliable but cannot be guaranteed. Any opinions or estimates are used for example only.

TOKCOMMERCIAL.COM



M-1

CITY OF CALDWELL, M-1 LIGHT INDUSTRIAL

The purpose of the light industrial zone is to provide areas by zoning procedures in accordance with the comprehensive plan which encourage the grouping together of light industrial uses capable of being operated under such standards as to location, appearance of buildings, and the treatment of land about them so that they will be unobtrusive and not detrimental to surrounding commercial or residential uses.



MINUTES TO I-84 & DOWNTOWN CALDWELL

GREENLEAF

SITE

Highway 19 / Simplot Blvd

Lower Pleasant Ridge Rd

SIMPLOT FOOD GROUP

DAVIDSON RANCH AIRPORT

Weitz Rd

DRIVE TIMES

Simplot Blvd/Hwy 19

DISTANCE

0.8 Miles

DRIVE TIME

1 Min Drive

Caldwell

5.6 Miles

9 Min Drive

I-84

6.1 Miles

9 Min Drive

MIDDLETON



Indian Creek PLAZA



THE COLLEGE OF IDAHO

CALDWELL



TOK
COMMERCIAL

UPDATED: 11.13.2025

THIS PROPERTY IS EXCLUSIVELY MARKETING BY TOK BOISE LLC DBA TOK COMMERCIAL

This information was obtained from sources believed reliable but cannot be guaranteed. Any opinions or estimates are used for example only.

TOKCOMMERCIAL.COM