



921 HOWARD STREET
SAN FRANCISCO | CA

NEW DEVELOPMENT
+/- 505 SF AND 1,471 SF
POTENTIAL TO COMBINE SPACES
FOR A TOTAL OF +/- 1,976 SF

maven
RETAIL

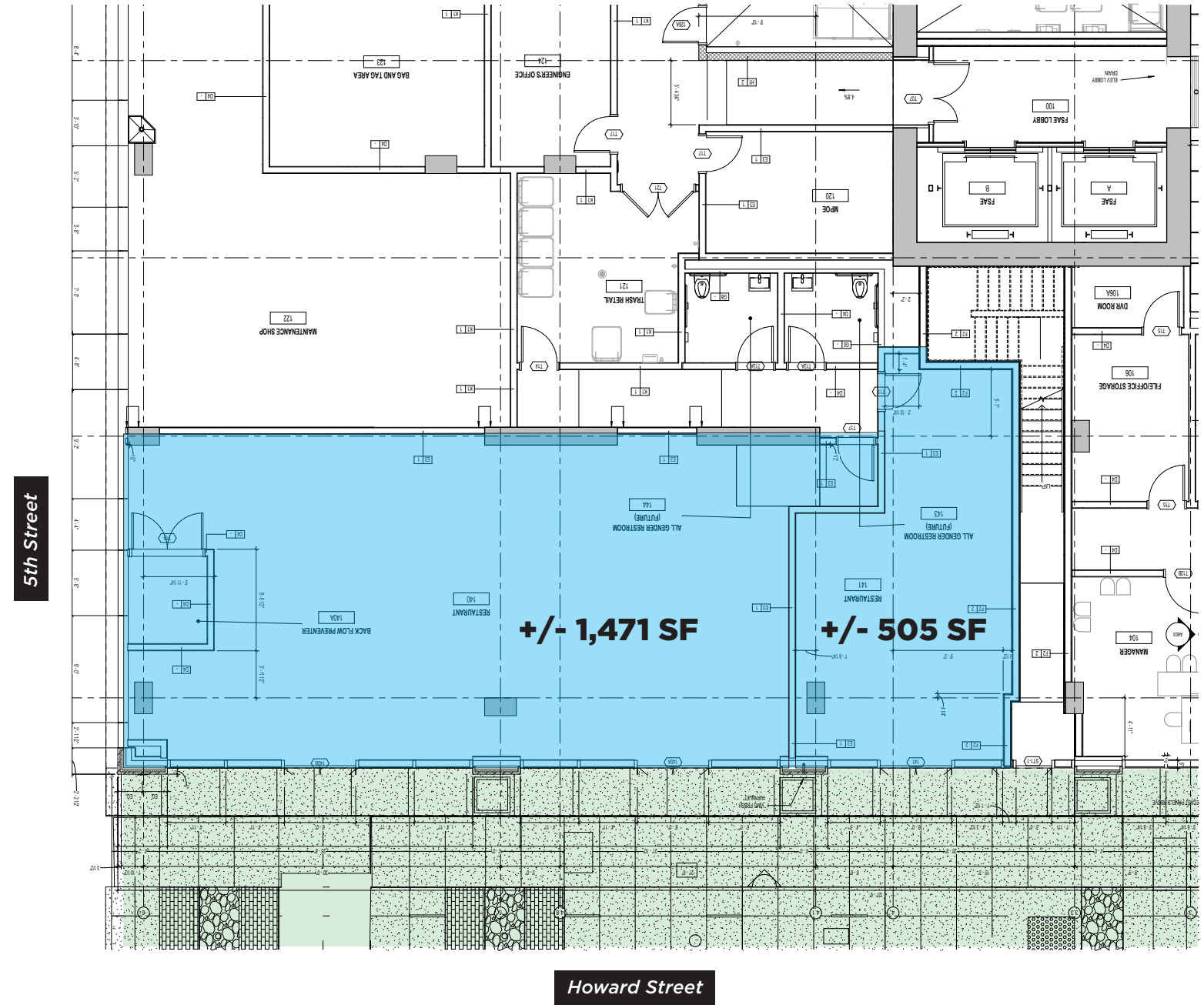
FEATURES

Ground floor retail opportunity in a new and impressive SOMA development project. Supported by over 200 residential units above, these side-by-side spaces feature +/- 505 - 1,976 square feet, high ceilings, great street frontage, and floor-to-ceiling windows. The spaces also feature flexible floor plans and are suitable for a variety of uses, including retail, grocery, personal services, and café. The property is only steps from the Yerba Buena Gardens, Moscone Center, IKEA project, InterContinental, Square Pie Guys and much more.

- +/- 505 SF and 1,471 SF - potential to combine spaces for a total of +/- 1,976 SF
- Community serving tenants desired
- Flexible pricing
- New construction
- Floor-to-ceiling windows
- Potential for Tenant Improvement Allowance
- 203 Affordable units above
- Located on the corner of 5th & Howard
- Plenty of parking garages nearby
- Across the street from the Intercontinental & the 5M project



Floor Plans



SOMA

San Francisco's South of Market (SOMA) neighborhood is experiencing historic levels of growth in the housing, retail, office, and restaurant sectors. The transit infrastructure, technology offices, and proximity to sports and entertainment venues have collectively enhanced this dynamic submarket, while plans to build over 8,000 new homes in the next twenty years continue to increase the neighborhood's density. This significant growth is highlighted by major development projects such as 5M, Salesforce Tower, Whole Foods and the Flower Mart – all of which will redefine the San Francisco skyline.

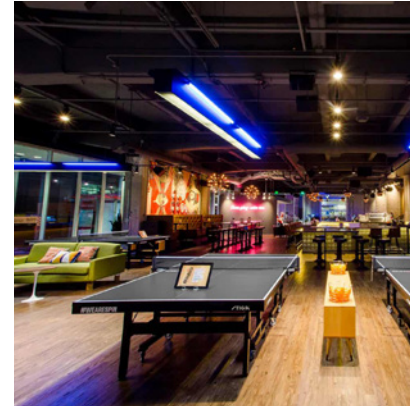
The San Francisco Museum of Modern Art (SFMOMA), the Contemporary Jewish Museum, and the Yerba Buena Center for the Arts are a few of the museums rooted in this eclectic neighborhood. Moscone Center, San Francisco's largest convention and exhibition complex is also located in SOMA and in the immediate vicinity of the subject property.



MOSCONE CENTER



DELI BOARD



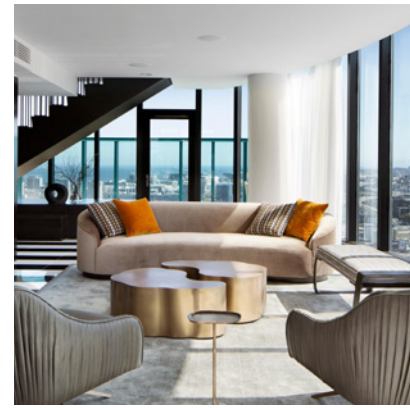
SPIN



SIGHTGLASS COFFEE



YERBA BUENA GARDENS



INTERCONTINENTAL



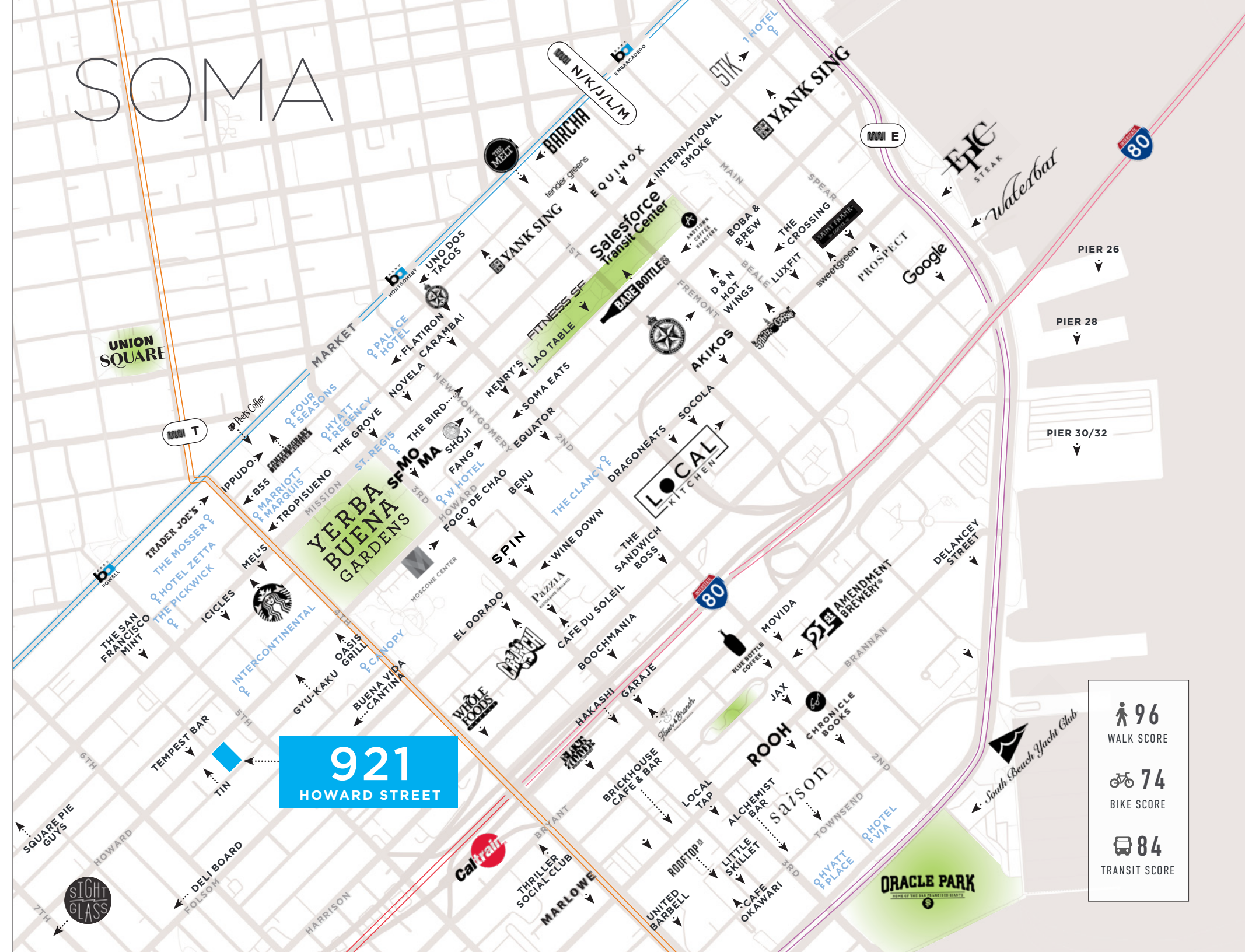
BLACK HAMMER BREWING



TIN



SQUARE PIE GUYS



Nearby Developments



maven
RETAIL

JOAN RUYLE
office 415.404.7313
joan@mavenproperties.com
DRE #02006025

921 HOWARD STREET — FOR LEASE

NOTICE: This information has been secured from sources we believe to be reliable but we make no representations, warranties, express or implied, as to the accuracy of the information. Listing broker has been given enough information to provide only a preliminary interest in the property. The materials are not to be considered fact. The information contained herein is not a substitute for thorough due diligence investigation. References to square footage, zoning, use, or age are approximate. Please contact the San Francisco Planning Department to verify zoning at (415) 558-6378, as neither broker or landlord represent that this space is suitable for your use. Tenant or Buyer must verify the information at their own expense and bears all the risk for any inaccuracies. By receiving these materials you are agreeing to the disclaimers set forth herein. DRE#01878802

466 Green Street Suite #203 | San Francisco, CA 94133 | 415-781-7700 | www.mavenproperties.com