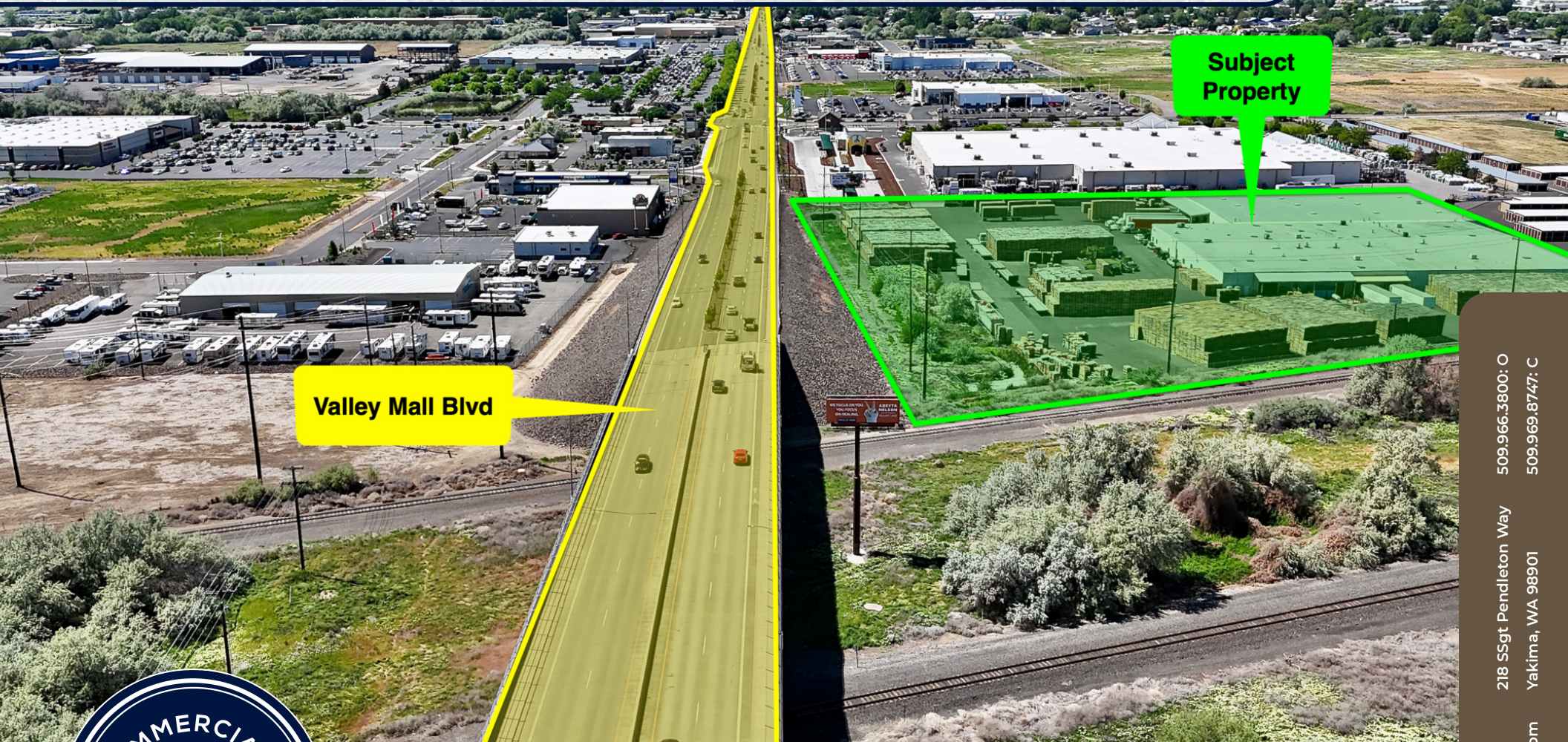


# FOR SALE/LEASE | Industrial Warehouse Space



Valley Mall Blvd

Subject Property



Offered at:  
Available:

\$0.55/SF/month, NNN  
89,200SF

2255 Longfibre Road  
Yakima, WA 98903

218 S Sgt Pendleton Way  
Yakima, WA 98901

Chris Sentz  
csentz@almoncommercial.com

509.966.3800: O  
509.969.8747: C

# Executive Summary



Lease Rate	<b>\$0.55/SF/MONTH, NNN</b>
------------	-----------------------------

## OFFERING SUMMARY

Building Size:	89,200SF
Lot Size:	7.14 acres
Sale Price:	Please call for price
Year Built:	1999
Zoning:	GC
Parcel Number	191331-44402
Located	City of Yakima

## PROPERTY OVERVIEW

THIS OFFERING is for the opportunity to purchase or lease approximately 89,200 square feet of functional industrial space well situated for manufacturing, warehousing, distribution or logistics operations. Constructed with durable concrete tilt-up construction and situated on a generously sized site with extensive paved yard and circulation areas, the property offers the infrastructure and flexibility required for a wide variety of users.

The facility benefits from strong regional connectivity to Interstate 82 within Yakima's established industrial corridor, providing efficient access for truck traffic, equipment movement, and employee accessibility. The combination of large-scale warehouse capacity, ample yard area, and flexible industrial utility makes this property an ideal solution for companies seeking scalable operations, production capabilities, storage, or distribution space in Central Washington.

---

# Highlights

---



---

## PROPERTY HIGHLIGHTS

- Six (6) dock high and six (6) ground level doors
- 5500 amps of power
- Sprinklered fire suppression system
- Skylights
- 2" airlines throughout
- Nicely appointed office buildout
- Break-room, conference room, assorted individual offices
- Fully paved and secured outdoor storage

## Additional Photos



---

# Proposed Parking & Yard Space

---



# Retailer Map



---

## Meet The Team

---



**CHRIS SENTZ**

Broker

**Direct:** 509.966.3800 **Cell:** 509.969.8747  
csentz@almoncommercial.com



**JEFF CRANE**

Principal

**Direct:** 206.336.5336 **Cell:** 206.949.4339  
jcrane@andoverco.com



**JACK CRANE**

Vice President

**Direct:** 206.258.3159 **Cell:** 206.446.6699  
jacklc@andoverco.com