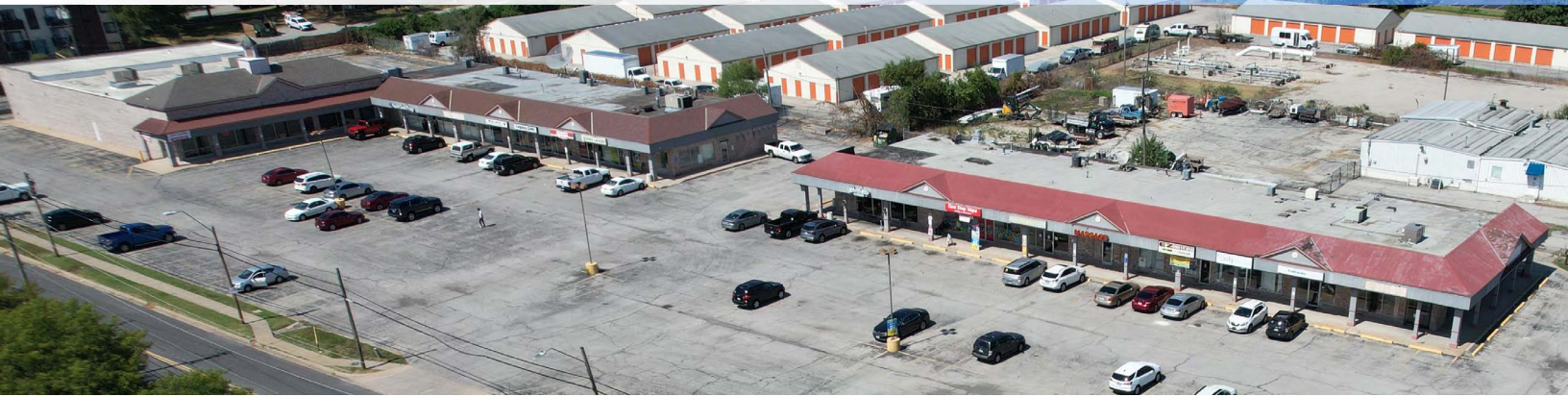




RETAIL/OFFICE SPACE FOR LEASE

534-618 E. 99th Street, Kansas City, Missouri



LEASE RATE: \$12-\$24/SF GROSS | 800 & 10,500 SF

DEMOGRAPHICS

	1 mile	3 miles	5 miles
Estimated Population	8,397	63,813	192,429
Avg. Household Income	\$90,585	\$131,006	\$132,204

- Multi tenant strip center at Holmes Road & 99th Street
- 10,500 SF space with loading dock available at \$12/SF gross
- Easy access to I-435
- 800 SF office/retail spaces available at \$24/SF gross



CLICK HERE TO VIEW MORE
LISTING INFORMATION

For More Information Contact:

GARRETT COHOON | 816.412.7315 | gcohoon@blockandco.com

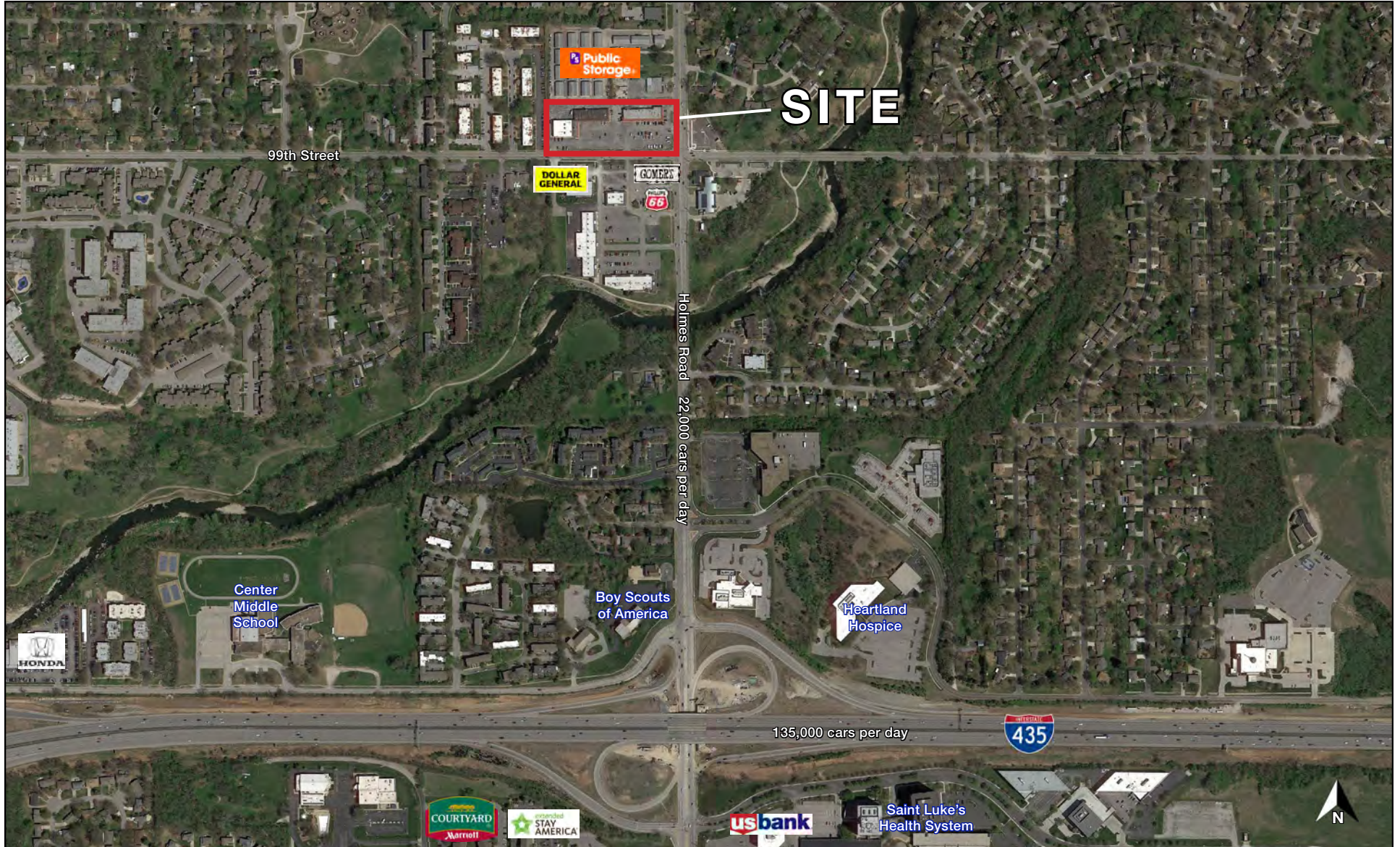
Exclusive Agent



RETAIL/OFFICE SPACE FOR LEASE

534-618 E. 99th Street, Kansas City, Missouri

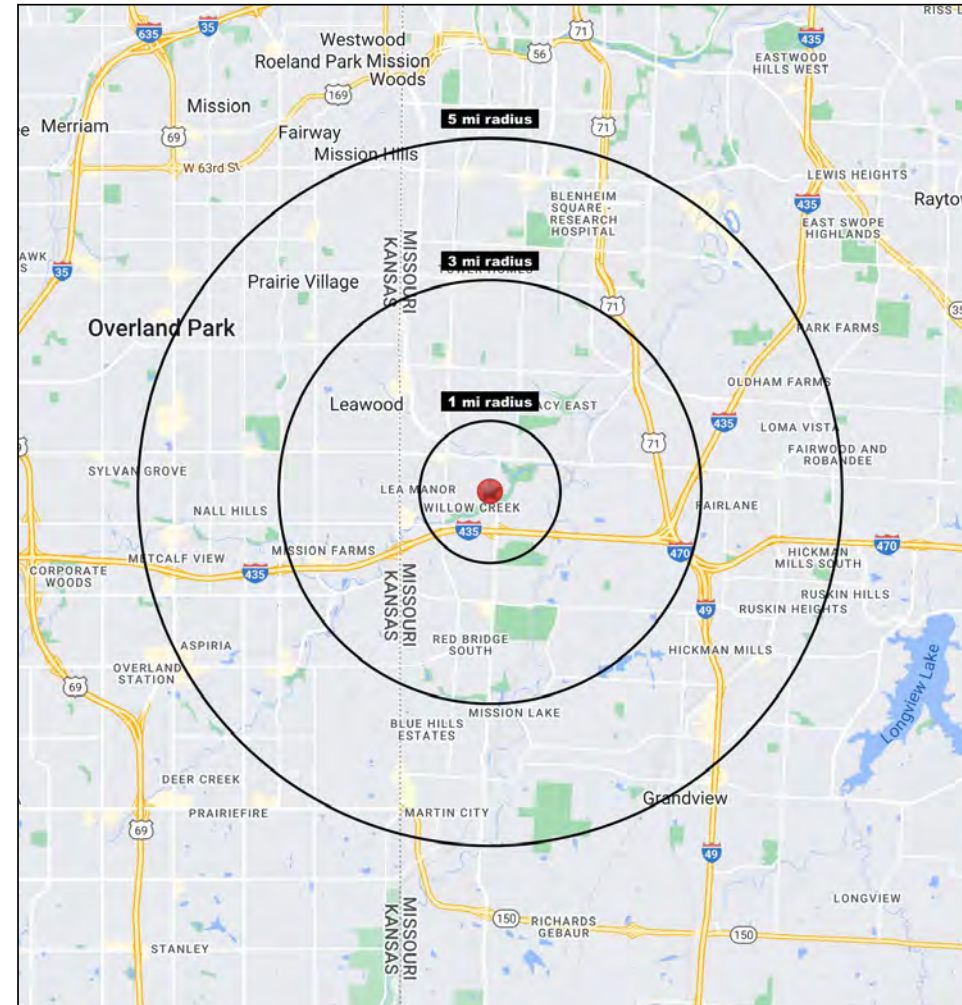
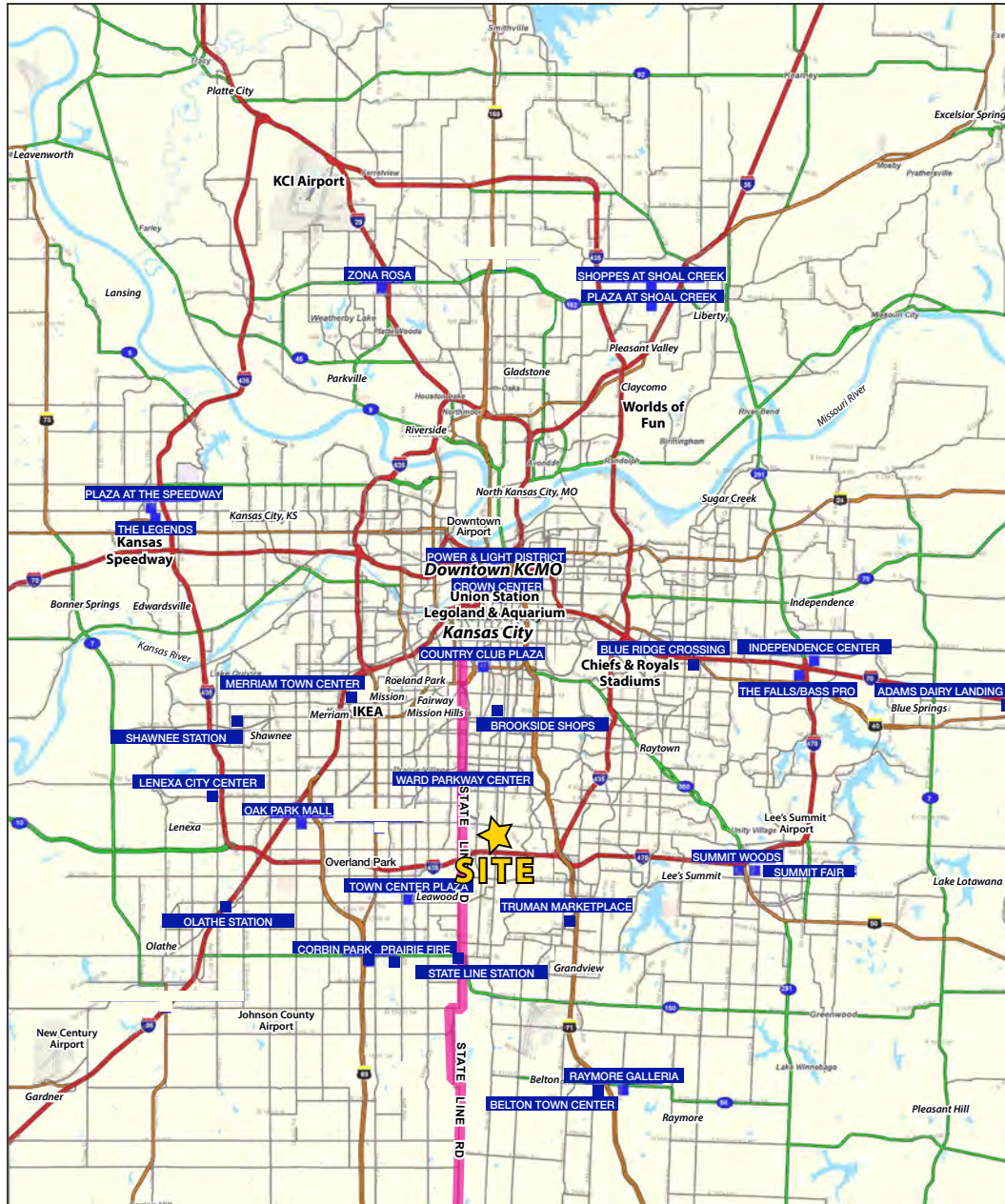
AERIAL





RETAIL/OFFICE SPACE FOR LEASE

534-618 E. 99th Street, Kansas City, Missouri





RETAIL/OFFICE SPACE FOR LEASE

534-618 E. 99th Street, Kansas City, Missouri

534-618 E. 99th Street Kansas City, MO 64131	1 mi radius	3 mi radius	5 mi radius
Population			
2023 Estimated Population	8,397	63,813	192,429
2028 Projected Population	8,515	64,305	194,353
2020 Census Population	8,283	63,410	191,943
2010 Census Population	8,115	61,648	184,949
Projected Annual Growth 2023 to 2028	0.3%	0.2%	0.2%
Historical Annual Growth 2010 to 2023	0.3%	0.3%	0.3%
2023 Median Age	39.4	41.2	41.5
Households			
2023 Estimated Households	4,387	29,383	85,658
2028 Projected Households	4,382	29,432	86,506
2020 Census Households	4,267	28,891	84,473
2010 Census Households	4,130	27,795	80,529
Projected Annual Growth 2023 to 2028	-	-	0.2%
Historical Annual Growth 2010 to 2023	0.5%	0.4%	0.5%
Race and Ethnicity			
2023 Estimated White	55.6%	68.3%	68.2%
2023 Estimated Black or African American	33.5%	21.8%	21.9%
2023 Estimated Asian or Pacific Islander	2.1%	2.8%	2.6%
2023 Estimated American Indian or Native Alaskan	0.4%	0.3%	0.3%
2023 Estimated Other Races	8.4%	6.9%	7.0%
2023 Estimated Hispanic	7.8%	5.9%	6.2%
Income			
2023 Estimated Average Household Income	\$90,585	\$131,006	\$132,204
2023 Estimated Median Household Income	\$67,678	\$90,410	\$95,072
2023 Estimated Per Capita Income	\$47,371	\$60,423	\$58,974
Education (Age 25+)			
2023 Estimated Elementary (Grade Level 0 to 8)	1.1%	1.6%	1.5%
2023 Estimated Some High School (Grade Level 9 to 11)	2.9%	3.0%	3.2%
2023 Estimated High School Graduate	20.0%	16.5%	17.4%
2023 Estimated Some College	25.3%	21.1%	19.6%
2023 Estimated Associates Degree Only	7.1%	6.4%	6.0%
2023 Estimated Bachelors Degree Only	30.2%	31.2%	30.5%
2023 Estimated Graduate Degree	13.5%	20.2%	21.8%
Business			
2023 Estimated Total Businesses	326	2,784	9,752
2023 Estimated Total Employees	2,729	31,038	124,393
2023 Estimated Employee Population per Business	8.4	11.2	12.8
2023 Estimated Residential Population per Business	25.7	22.9	19.7

©2023. Sites USA. Chandler, Arizona. 480-491-1112 Demographic Source: Applied Geographic Solutions 4/2023. TIGER Geographv - RS1