

Clifton Area Buildings Available

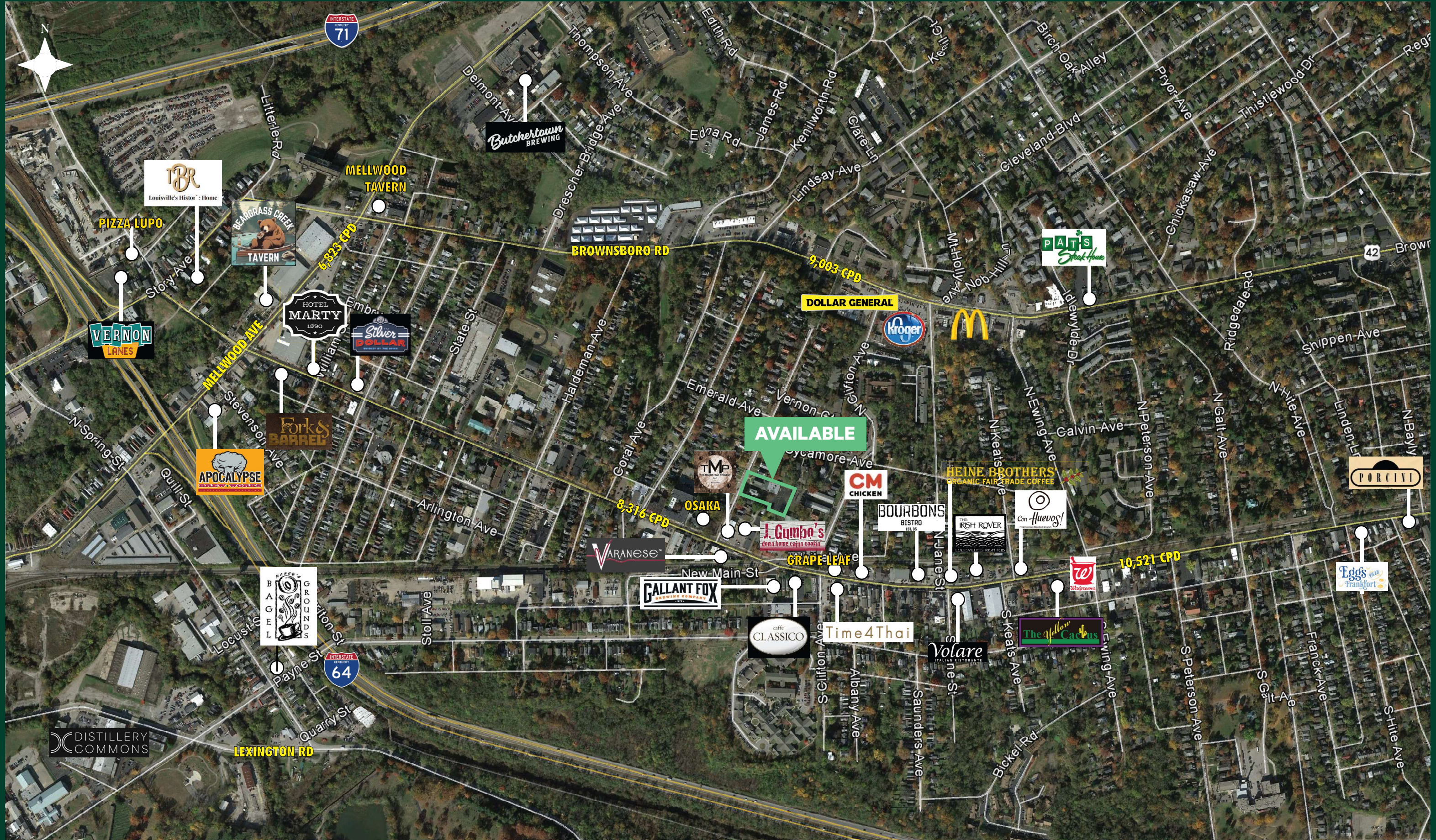
Close Proximity to Frankfort Ave

125-129 Vernon Avenue
Louisville, KY 40206



Property Features:

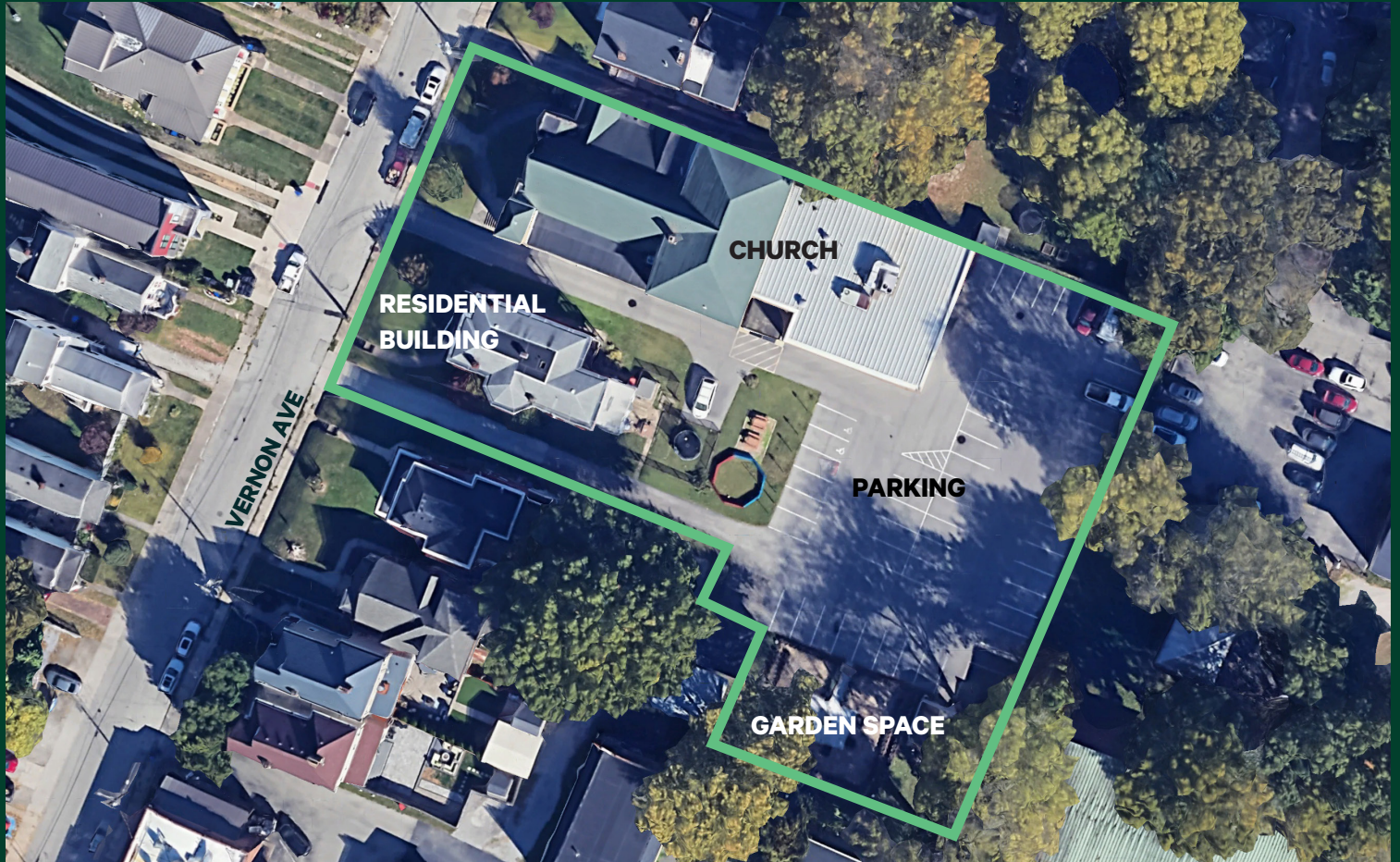
- + 1.1± total acreage available
- + Two buildings available
 - 17,335± square foot church building
 - 3,262± square foot residential building
- + Zoned R-5B
- + Highly desirable area of the Clifton neighborhood
- + Close proximity to the high-density commercial corridor on Frankfort Ave
- + Great walkability
- + On-site parking available



Buildings Available

125-129 Vernon Avenue | Louisville, KY 40206

For Sale



2024 Estimated Demographics	1 Mile	2 Miles	3 Miles	4 Miles
Population	12,498	40,348	91,673	161,428
Daytime Population	9,685	40,612	179,645	262,175
Average Household Income	\$86,873	\$108,057	\$104,673	\$100,824

Contact Us

Clay Hunt
First Vice President
+1 502 412 7607
clay.hunt@cbre.com

Michael Somervell, CCIM
First Vice President
+1 502 412 7659
michael.somervell@cbre.com

© 2025 CBRE, Inc. All rights reserved. This information has been obtained from sources believed reliable but has not been verified for accuracy or completeness. CBRE, Inc. makes no guarantee, representation or warranty and accepts no responsibility or liability as to the accuracy, completeness, or reliability of the information contained herein. You should conduct a careful, independent investigation of the property and verify all information. Any reliance on this information is solely at your own risk.