



SUN WEST

SEQ MENAUL BLVD & SAN MATEO BLVD
5300-5320 Menaul Boulevard Northeast Albuquerque, NM 87110



FOR LEASE

AVAILABLE SPACE
Suite 5318: 2,619 SF
Suite 5306: 3,496 SF

RATE
\$18.00 PSF NNN
NNNs* \$1.50
* Estimate provided by Landlord and subject to change

Austin Tidwell, CCIM
atidwell@resolutre.com
505.337.0777

Daniel Kearney
dkearney@resolutre.com
505.337.0777

Rob Powell, CCIM
rpowell@resolutre.com
505.337.0777

The information contained herein was obtained from sources deemed reliable; however, RESOLUT RE makes no guaranties, warranties or representations to the completeness or accuracy thereof. The presentation of this real estate information is subject to errors; omissions; change of price; prior sale or lease; or withdrawal without notice. RESOLUT RE, which provides real estate brokerage services, is a division of Reliance Retail, LLC, a Texas Limited Liability Company.

PROPERTY HIGHLIGHTS

- High traffic retail strip center with over 29,000 cars per day
- Prime slot available on top of the pylon sign
- Suite 5318: Beautiful office suite available (former Geico office) with reception, bullpen, private office & kitchenette
- Suite 5306: Open retail storefront with opportunity to pick flooring/ paint
- Great full access point from Menaul & La Veta Dr



AREA TRAFFIC GENERATORS



Austin Tidwell, CCIM
atidwell@resolutre.com | 505.337.0777

Daniel Kearney
dkearney@resolutre.com | 505.337.0777

Rob Powell, CCIM
rpowell@resolutre.com | 505.337.0777

DEMOGRAPHIC SNAPSHOT 2025

121,645
POPULATION
3-MILE RADIUS

\$83,190.00
AVG HH INCOME
3-MILE RADIUS

144,865
DAYTIME POPULATION
3-MILE RADIUS

TRAFFIC COUNTS
Menaul Blvd: 29,032 VPD
San Mateo Blvd: 32,355 VPD
(Sites USA 2025)

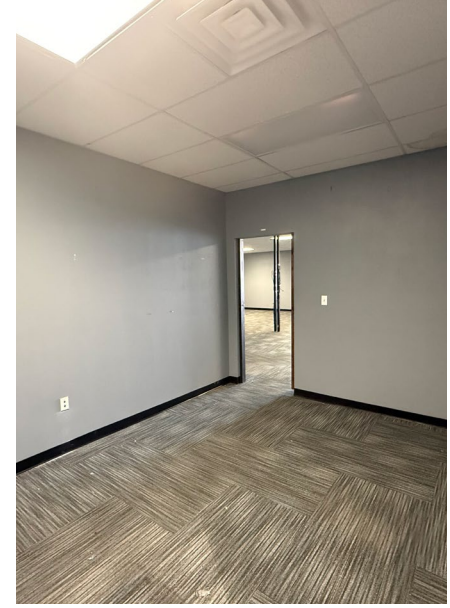
SUN WEST | 5300-5320 Menaul Boulevard Northeast Albuquerque, NM 87110



SUN WEST | 5300-5320 Menaul Boulevard Northeast Albuquerque, NM 87110



Suite 5318: 2,619 SF



SUN WEST | 5300-5320 Menaul Boulevard Northeast Albuquerque, NM 87110

Suite 5306: 3,496 SF





