

# WATERLOO EXECUTIVE SUITES

500 N. CAPITAL OF TEXAS HWY, BUILDING 2



## CREATIVE + WORK + SPACE

- SINGLE OFFICES OR SUITES
- VARIOUS SF OPTIONS
- FLEXIBLE LEASE TERMS
- PRIME LOCATION
- NATURAL SETTING
- NEW MODERN FINISHES
- IMMACULATE BREAK AREA
- CONFERENCE ROOMS
- BUILDING RECEPTIONIST
- LOTS OF PARKING
- ROOFTOP PATIO WITH VIEW

Jon Strelec

Cell: 512-657-0717

Office: 512-472-3939

Fax: 877-472-3939

[jstrelec@tribecacompany.com](mailto:jstrelec@tribecacompany.com)

500 N. Capital of Texas Hwy

Building 2

Austin, TX 78746

THE  
**TRIBECA**  
COMPANY

The information contained herein has been obtained from sources believed reliable. However, Tribeca Real Estate Company, LLC makes no guarantees, warranties, or representations as to the accuracy. Interested parties are encouraged to conduct their own investigations and inquiries.

# WATERLOO EXECUTIVE SUITES

## AMENITIES AND OPTIONS



### AMENITIES

FURNISHED PRIVATE OFFICES  
ALL UTILITIES PAID  
SECURED 24/7 ACCESS  
DAILY MAIL SERVICE  
QUICK RESPONSE MAINTENANCE  
HIGH SPEED FIBER INTERNET  
CAT 5E WIRING THROUGHOUT  
PHONE/VOIP READY  
DAILY JANITORIAL SERVICE  
LED LIGHTING  
CONFERENCE ROOMS  
BREAK ROOM CABLE TVS  
REFRIGERATOR  
VENDING MACHINES  
KEURIG COFFEE MAKERS  
FILTERED WATER AND ICE

### OPTIONS

CALL ANSWERING/SCREENING  
COPY/FAX/SCAN SERVICES  
NOTARY SERVICES  
COURIER SERVICES  
FED-EX AND UPS SERVICES  
STATIC IP'S AVAILABLE  
MAIL CHECK / MAIL FORWARD  
ADMIN SERVICES

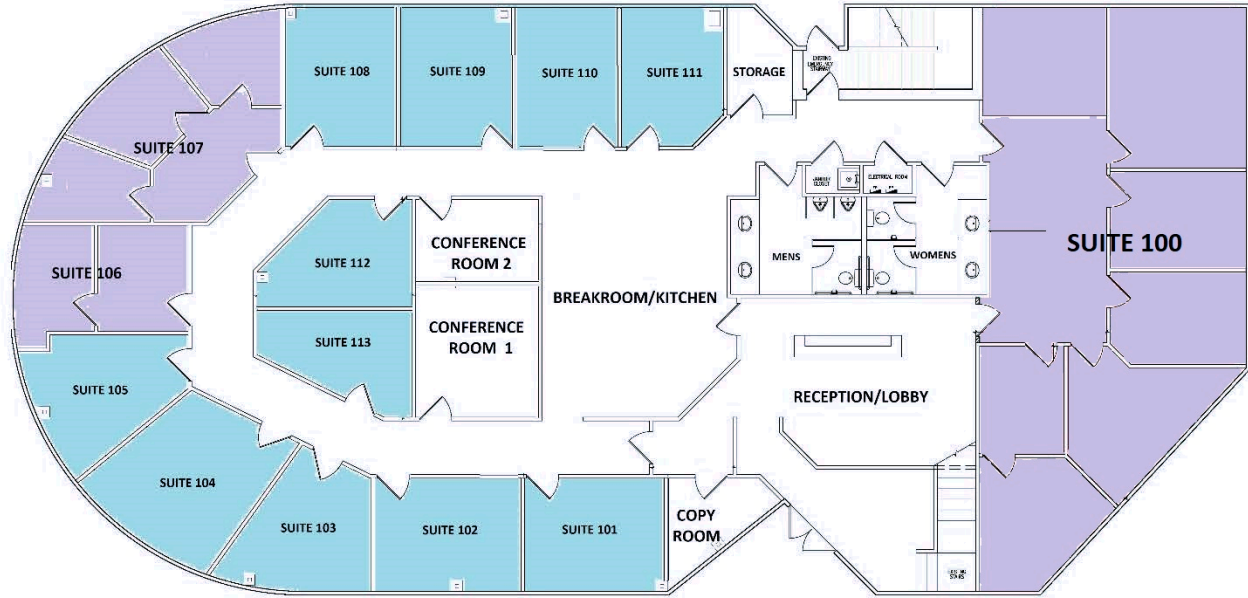


THE  
**TRIBECA**  
COMPANY

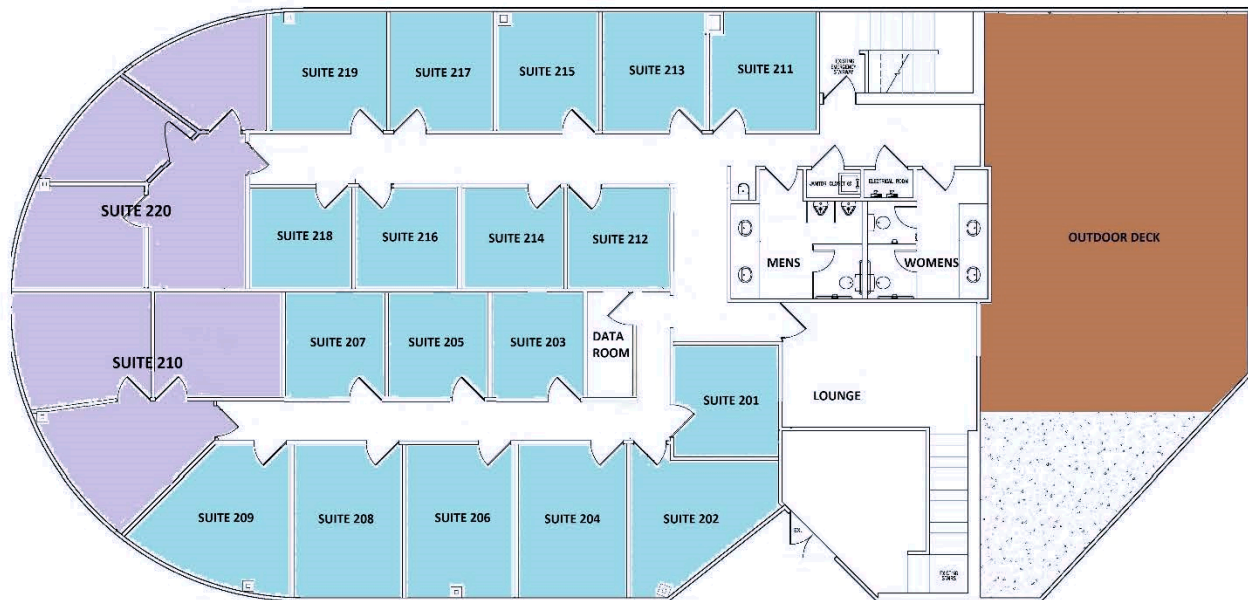
Jon Strelec  
Cell: 512-657-0717  
Office: 512-472-3939  
Fax: 877-472-3939  
[jstrelec@tribecacompany.com](mailto:jstrelec@tribecacompany.com)  
500 N. Capital of Texas Hwy  
Building 2  
Austin, TX 78746

The information contained herein has been obtained from sources believed reliable. However, Tribeca Real Estate Company, LLC makes no guarantees, warranties, or representations as to the accuracy. Interested parties are encouraged to conduct their own investigations and inquires.





**FIRST FLOOR**



**SECOND FLOOR**