

481 S OREM BLVD OFFICE

FOR LEASE



PROPERTY DETAILS

481-485 S Orem Blvd, Orem, UT 84058

- Great central Orem Location
- Access from Orem Blvd & State Street
- Each suite has 4 rooms and restroom
- Building Signage Available
- Executive Suites Available
- Shared Breakroom
- FULL SERVICE RATES
- Wifi included
- Available Suites
 - » Suite 201 - 980 SF - \$1,750
 - » Suite 202 B - \$500
 - » Suite 202 C - \$550
 - » Suite 202 D - \$450

SURROUNDING TENANTS



2025 DEMOS

EST. POPULATION

1 MILE » 22,324
3 MILE » 128,457
5 MILE » 231,897

EST. HOUSEHOLDS

1 MILE » 7,456
3 MILE » 40,071
5 MILE » 70,262

EST. AVERAGE HH INCOME

1 MILE » \$102,139
3 MILE » \$121,848
5 MILE » \$113,313

NIC WOODS

nic@summitutahcre.com
direct: 801.719.4309

[View Profile](#)

LANCE ROSE

Interstate Realty Brokers
direct: 801.769.6461

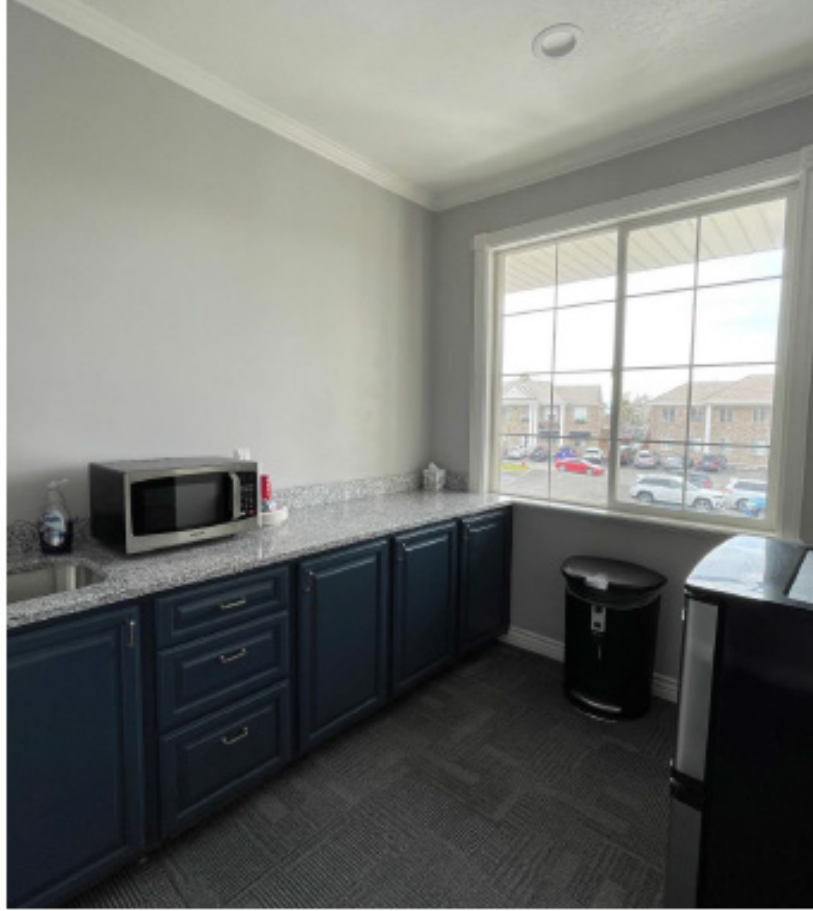
[View Profile](#)

FULL SERVICE COMMERCIAL REAL ESTATE 1875 S State St. Suite 1000, Orem, UT 84097

Office 801.435.5005

This statement with the information it contains is given with the understanding that all negotiations relating to the purchase, renting or leasing of the property described above shall be conducted through this office.





NIC WOODS

nic@summitutahcre.com
direct: 801.719.4309

[View Profile](#)

LANCE ROSE

Interstate Realty Brokers
direct: 801.769.6461

[View Profile](#)

FULL SERVICE COMMERCIAL REAL ESTATE 1875 S State St. Suite 1000, Orem, UT 84097

Office 801.435.5005

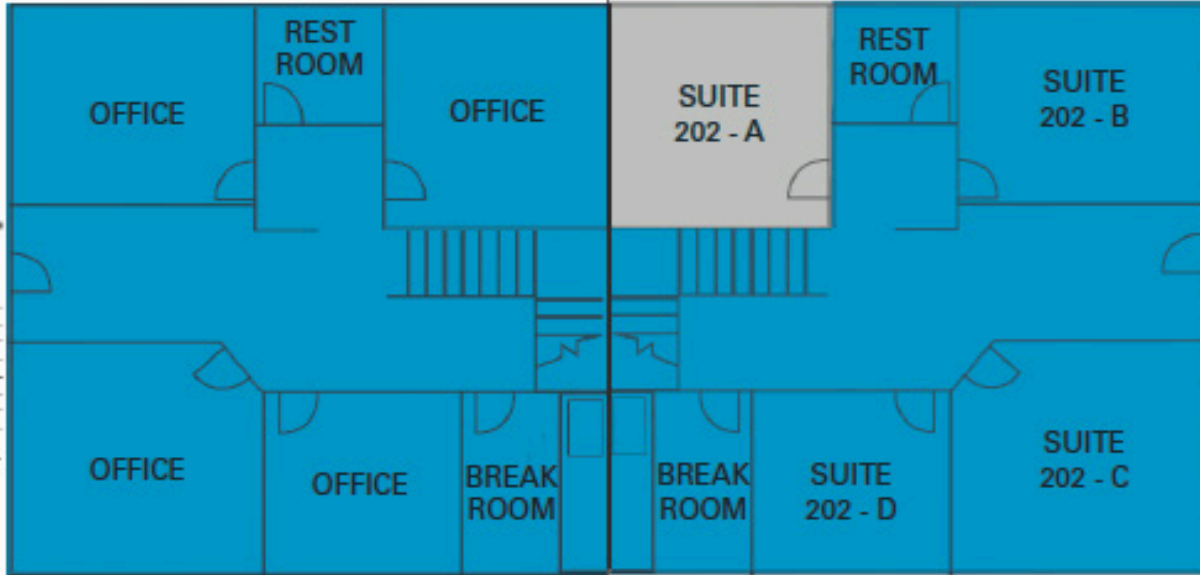
This statement with the information it contains is given with the understanding that all negotiations relating to the purchase, renting or leasing of the property described above shall be conducted through this office.

481 S OREM BLVD OFFICE

FLOOR PLANS

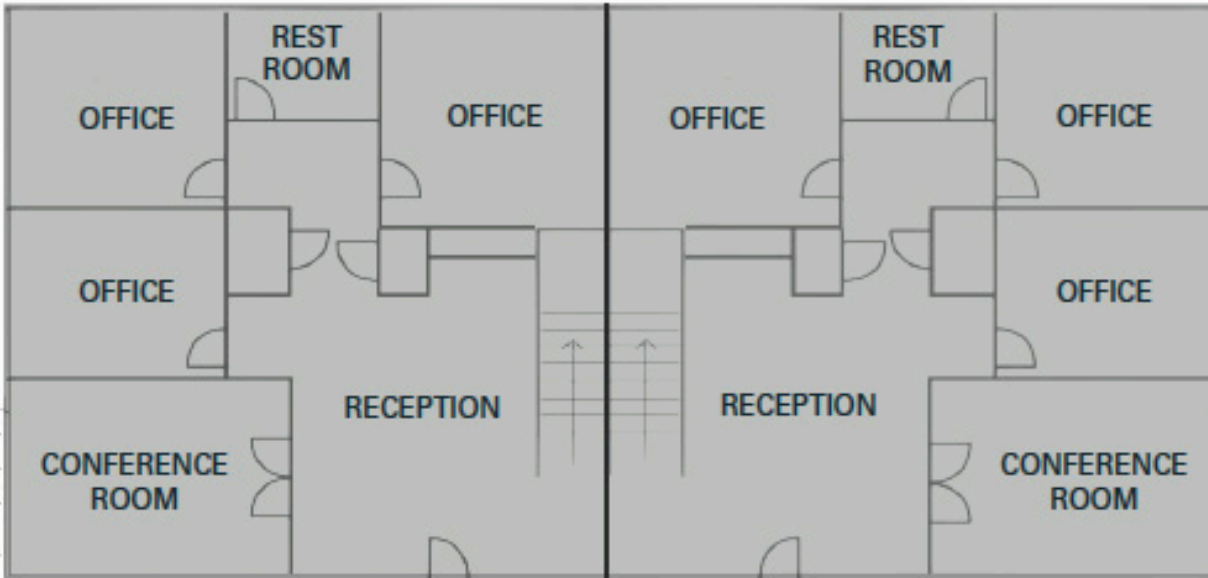
**UPPER LEVEL
Suite 201**



**UPPER LEVEL
Suite 202**



**MAIN LEVEL
Suite 101**

**MAIN LEVEL
Suite 102**



-  **AVAILABLE**
-  **LEASED**



NIC WOODS
nic@summitutahcre.com
direct: 801.719.4309

[View Profile](#)

LANCE ROSE
Interstate Realty Brokers
direct: 801.769.6461

[View Profile](#)

FULL SERVICE COMMERCIAL REAL ESTATE 1875 S State St. Suite 1000, Orem, UT 84097

Office 801.435.5005