

The Suites at The Mill
710 Wheatland Street
Phoenixville, PA 19460

For Lease
±5,200 RSF Office

\$22/SF

Strategically located just off Bridge Street in downtown Phoenixville, this property is only a short walk to all the restaurants and attractions that Phoenixville has to offer. In addition to a thriving downtown, Phoenixville currently has over 3,000 proposed and recently completed housing units in the market. Recently completed projects include Steelworks, The Phoenix, The Reserve at Steelpoint, and The Lofts at Church.



Formerly occupied by a behavioral health group, this office would be in turnkey condition for a similar type of user. The space also converts very well for a traditional office user with its current layout.

Availability

- 1st Floor - Suite 102

Property Highlights

- +/- 5,200 RSF with direct access and designated entrance from the parking lot.
- Located on the entire first floor, the space boasts an industrial feel with 3 sides of windows providing an abundant amount of natural light.
- The available space is in excellent condition, needing only minor cosmetic improvements for the next tenant.



Nick Branton
nbranton@geisrealty.com

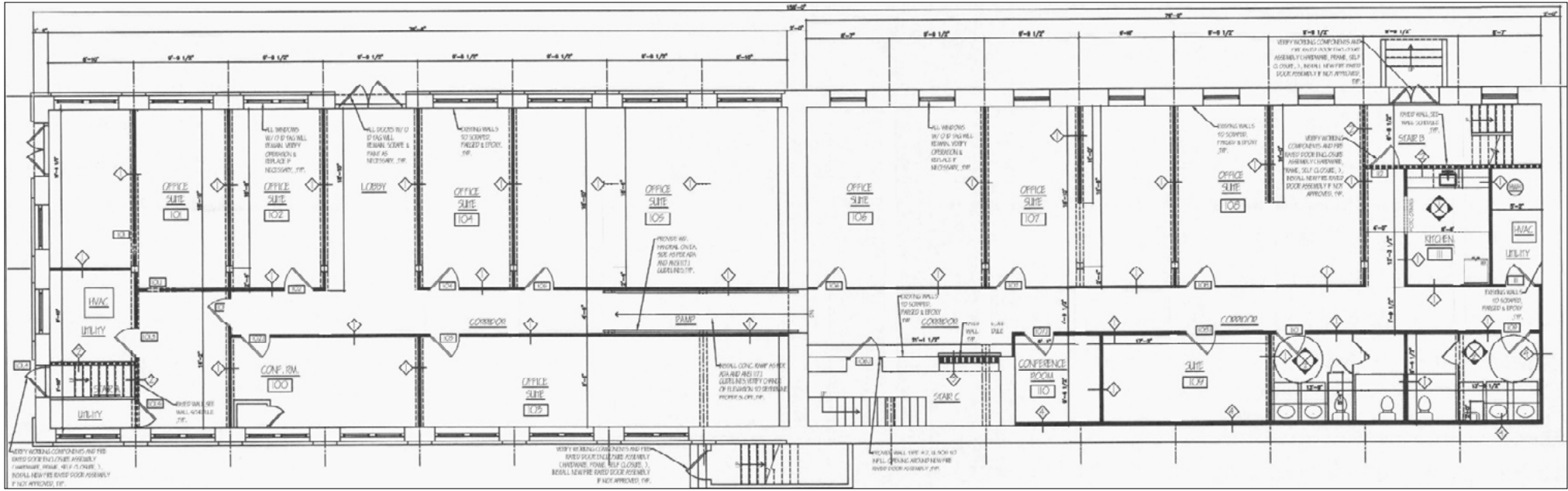
996 Old Eagle School Road, Suite 1117, Wayne, PA 19087
(610) 989-0300 Tel | (610) 989-0234 Fax
www.geisrealty.com

No warranty or representation, express or implied, is made as to the accuracy of the information contained herein, and the same is submitted subject to errors, omissions, change of price, rental or other conditions, prior sale, lease or financing, or withdrawal without notice, and of any special listing conditions imposed by our principals no warranties or representations are made as to the condition of the property or any hazards contained therein are any to be implied.

710 Wheatland Street

Phoenixville, PA 19460

Floor Plan



710 Wheatland Street

Phoenixville, PA 19460

Location

