



SOUTH POINT BUSINESS PARK

FLEX OFFICE AND WAREHOUSE SPACE | SOUTHWEST CHARLOTTE

2 miles from I-77

13504 SOUTH POINT BOULEVARD



AVAILABILITIES

Suite K: ±19,660 SF available 10/1/24

Office: ±12,361 SF

Dock Doors: 3

Drive-in Door: 1

Clear Height: 18'

- » Suite K is divisible into two suites of ±9,496 SF and ±10,164 SF
- » End cap unit

*All units have substantial glass

13900 SOUTH LAKES DRIVE



AVAILABILITIES

Suite B: ±5,058 SF

» Available immediately

Office: ±3,159 SF

» Air conditioned warehouse

Drive-in Door: 1

Clear Height: 16'

Suite F: ±9,064 SF

» Available immediately

Office: ±3,157 SF

» Air conditioned Warehouse/ Assembly

Dock Door: 1

Suite N: ±7,397 SF

» Available 3/01/2025

Office: ± 3,905 SF

» End cap unit

Dock Doors: 2

Drive-in Door: 1

Clear Height: 16'

*Suites F&N can be combined for a total of ± 16,461 SF

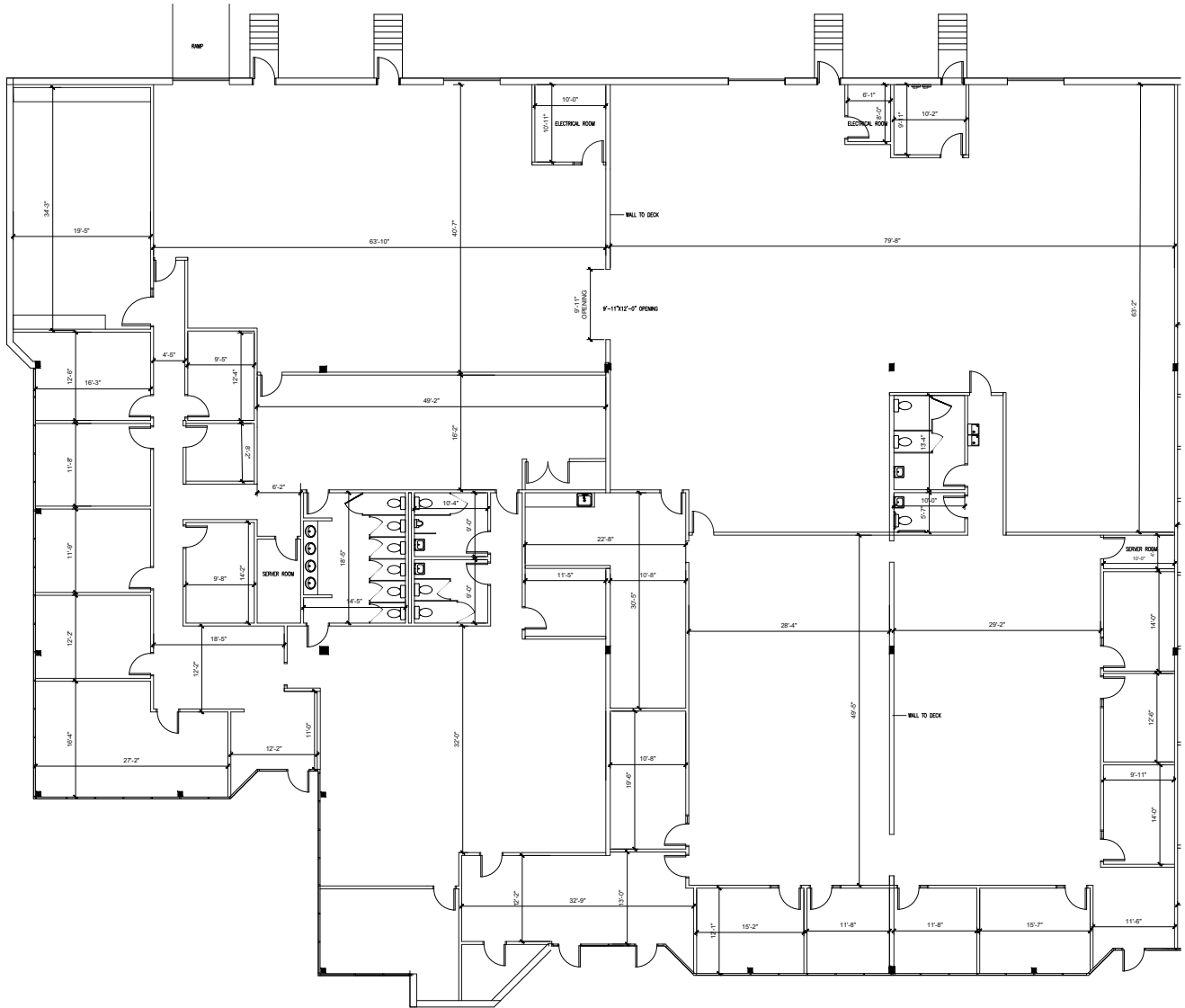
CONTACT

BILL WOOD | WPW@TRINITY-PARTNERS.COM | 704.906.2763

OWNED BY
ADLER
REAL ESTATE PARTNERS

LEASED BY
TRINITY
PARTNERS

13504 SOUTH POINT BOULEVARD | SUITE K - 19,660 RSF TOTAL



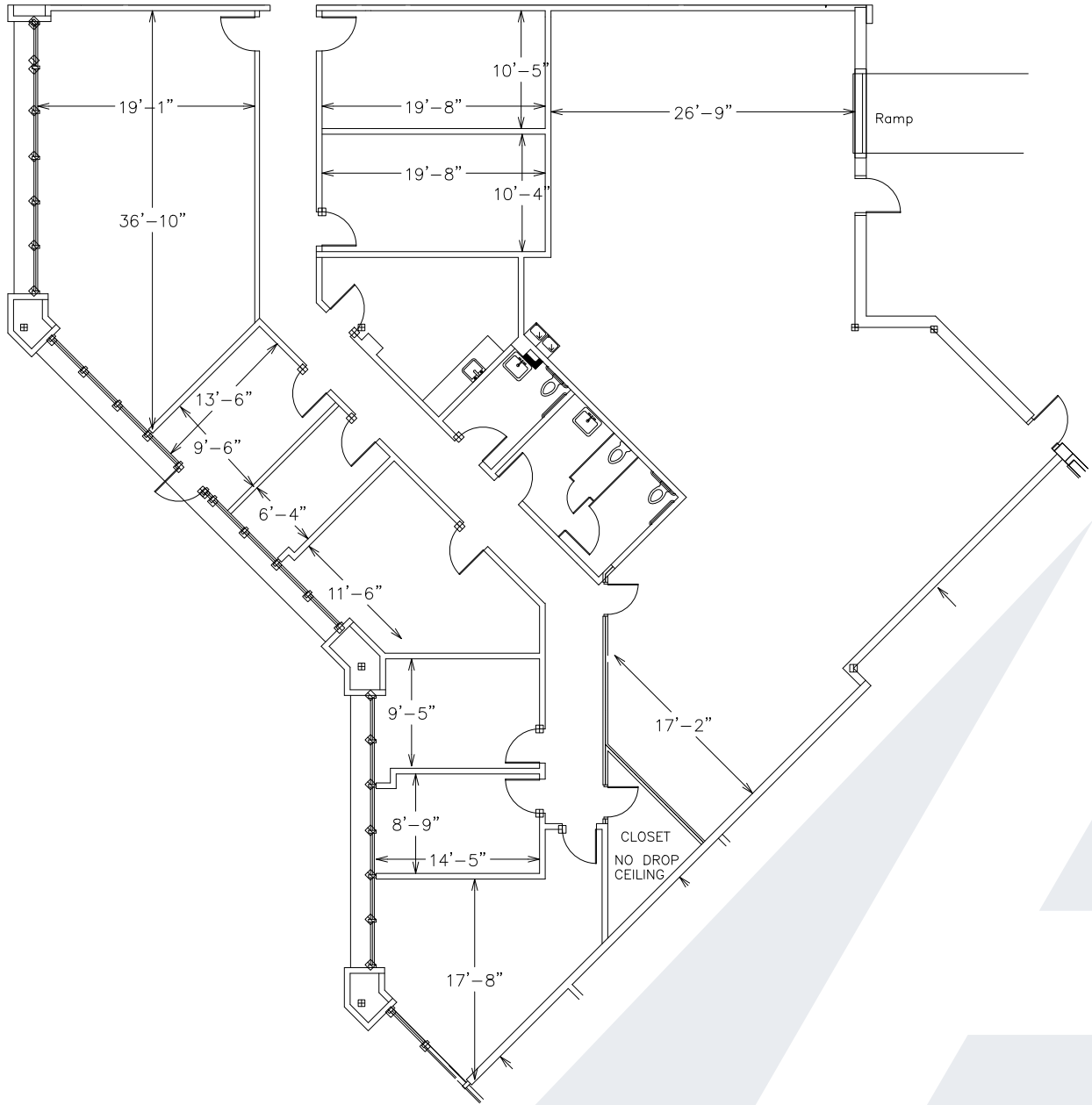
CONTACT

BILL WOOD | WPW@TRINITY-PARTNERS.COM | 704.906.2763

OWNED BY
ADLER
REAL ESTATE PARTNERS

LEASED BY
TRINITY
PARTNERS

13900 SOUTH LAKES DRIVE | SUITE B - 5,058 RSF TOTAL



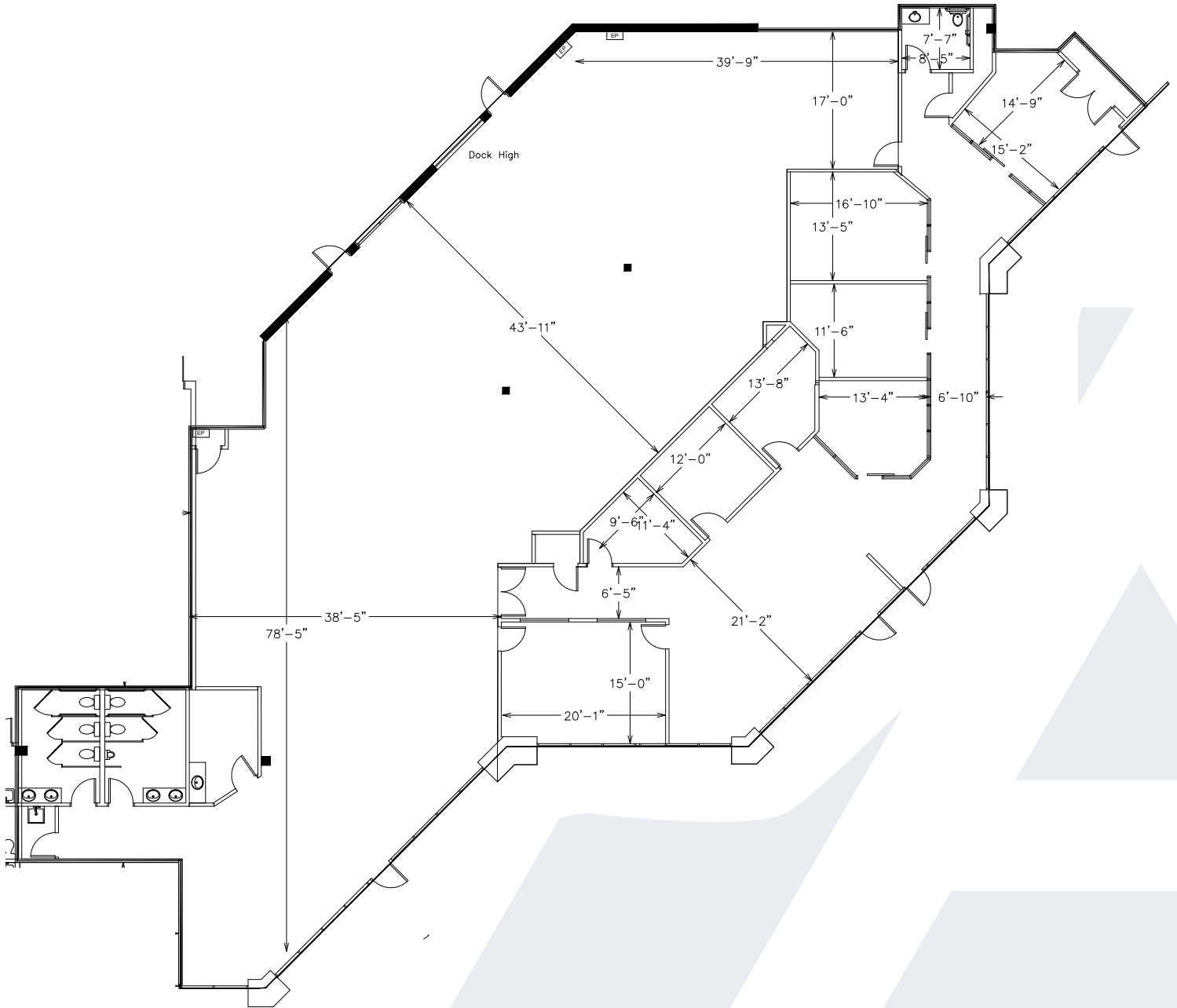
CONTACT

BILL WOOD | WPW@TRINITY-PARTNERS.COM | 704.906.2763

OWNED BY
ADLER
REAL ESTATE PARTNERS

LEASED BY
TRINITY
PARTNERS

13900 SOUTH LAKES DRIVE | SUITE F - 9,064 RSF TOTAL



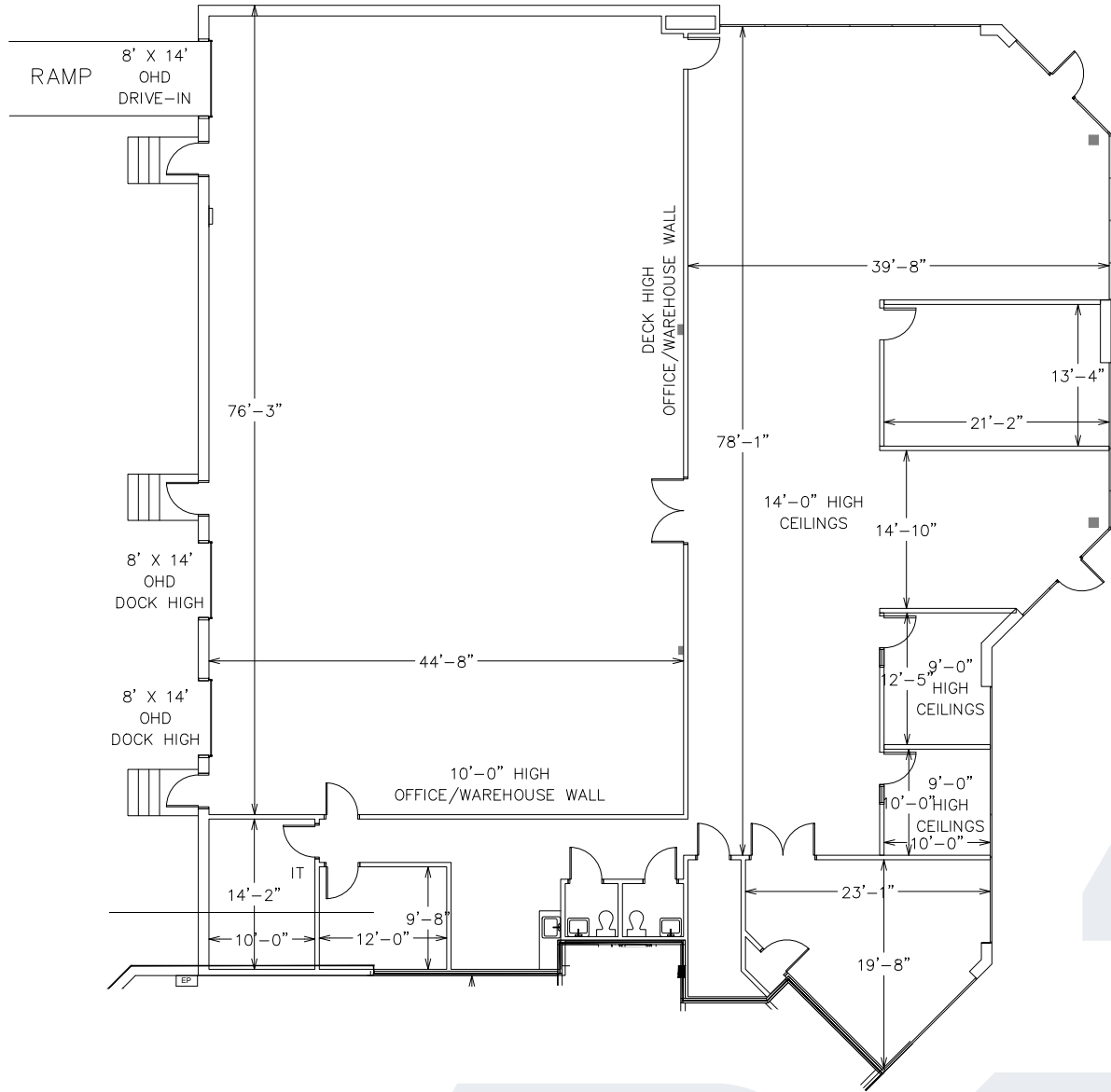
CONTACT

BILL WOOD | WPW@TRINITY-PARTNERS.COM | 704.906.2763

OWNED BY
ADLER
REAL ESTATE PARTNERS

LEASED BY
TRINITY
PARTNERS

13900 SOUTH LAKES DRIVE | SUITE N - 7,397 RSF TOTAL



CONTACT

BILL WOOD | WPW@TRINITY-PARTNERS.COM | 704.906.2763

OWNED BY
ADLER
 REAL ESTATE PARTNERS

LEASED BY
TRINITY
 PARTNERS