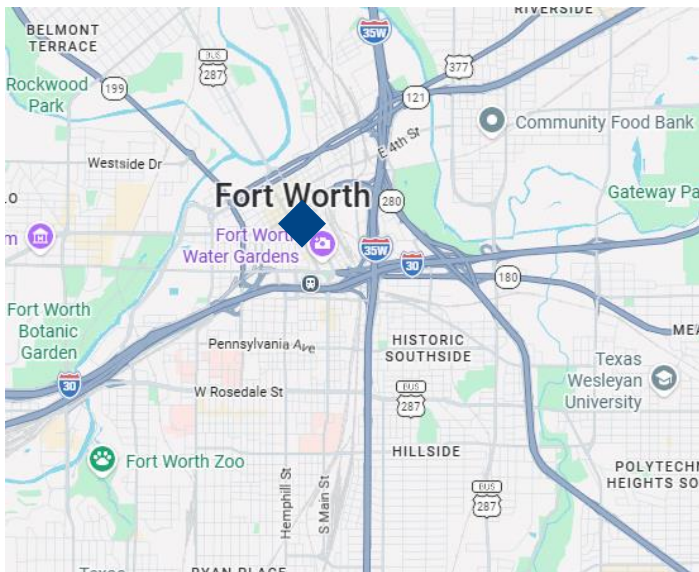




ELEVATED OFFICE SPACE in DOWNTOWN FORT WORTH

Position your firm at the pinnacle of Fort Worth's skyline in the city's most recognizable Class A office tower. Suite 2825 offers a refined 28th-floor presence, efficient layout, and commanding skyline views. Designed to balance private focus with collaborative workflow, the current test fit includes a host of amenities and is well-suited to accommodate a variety of performance-driven firms.



property highlights

ADDRESS 777 Main Street, Fort Worth
SUITE | SIZE 2825 | 28TH Floor | 2,843 Sq. Ft
LEASE Sept. 2035 Lease Expiration

With expansive glass lines and views, Suite 2825 delivers both executive presence and operational efficiency in one of Fort Worth's most prestigious business addresses.

- Reception / Arrival Area
- Conference Room
- Multiple Private Offices
- Breakroom
- IT / Storage
- Open Office Workspace

location

A statement address in downtown Fort Worth, 777 Main provides walkability and convenience:

- Steps from Sundance Square
- Adjacent to premier hotels
- Surrounded by top-tier dining and entertainment
- Central access to Fort Worth's legal, financial, and corporate corridor



for sublease

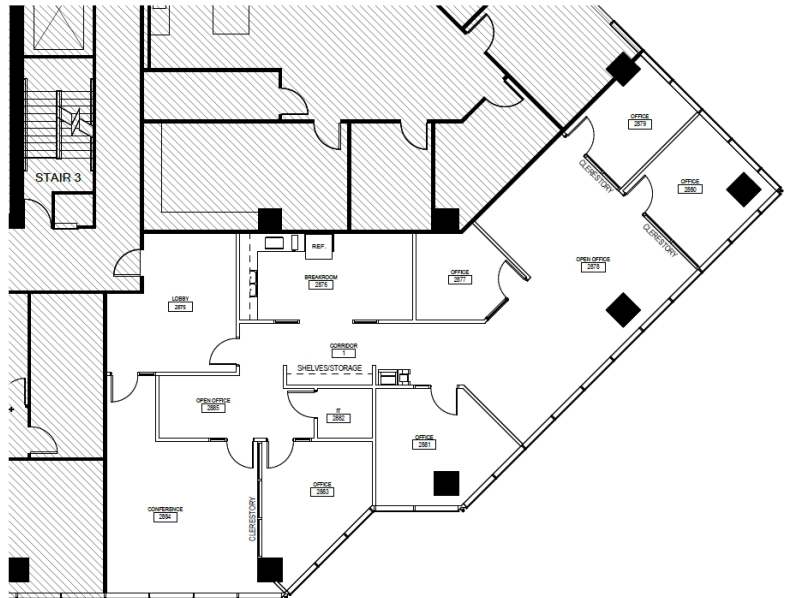


the building

777 Main Street is a 40-story, Class A+ office tower located in the heart of downtown Fort Worth. Recognized for its distinctive dynagrid architecture and institutional-quality ownership, the tower provides a premier business environment for professional, financial, and corporate tenants.

building highlights

- 40-story landmark office tower
- Iconic dynagrid structural design
- Dramatic two-story, high-end lobby experience
- On-site fitness center with locker facilities
- Structured parking garage with direct access
- 24/7 security and professional property management
- On-site dining and ground-floor retail
- Walkable to Sundance Square restaurants, hotels & entertainment
- Immediate access to I-30 and I-35W



bielpartners.com

JOHN BIELAMOWICZ / 214.770.1211
john@bielpartners.com