

130 MILL STREET UTICA, IL

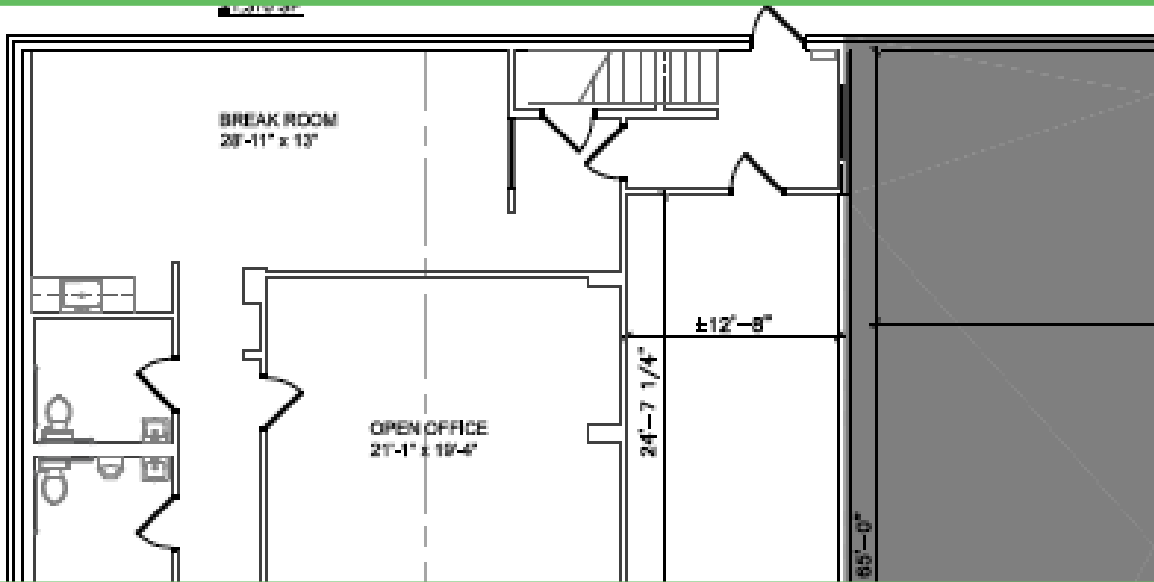
FOR LEASE OR SALE

- GROCERY • BAKERY • DELI •
- LIQUOR STORE • CAFE •
- CAMPING SUPPLIES •

The Utica Grocery has been in continuous operation since the 1960s until closing down during the pandemic.

The Grocery located on the 50 yard line of Mill / Main Street is flanked by restaurants like; *Canal Port, Lodi Tap, Skoogs Pub, August Hill Winery, Joy & Eds, The Bickerman Building Coffee & Ice Cream* as well as tourist focused retail.

Utica is the home of Starved Rock and Matthiessen State Parks which entertain nearly 3 million visitors a year.



DETAILS:

Total Area:	3,840 Sq. Ft.
Lease Rate:	\$2,600/Month Gross
Asking Price:	\$295,000

COOLERS:

Total:	600 Sq. Ft. Merchandiser Refrigeration & New Wood Laminate Floor
Walk-In Reach-In Freezer:	104 Sq. Ft. (5 Doors)
Walk-In Reach-In Merchandiser:	436 Sq. Ft. (19 Doors)
Walk-In Meat Cooler:	60 Sq. Ft. (1 Door)

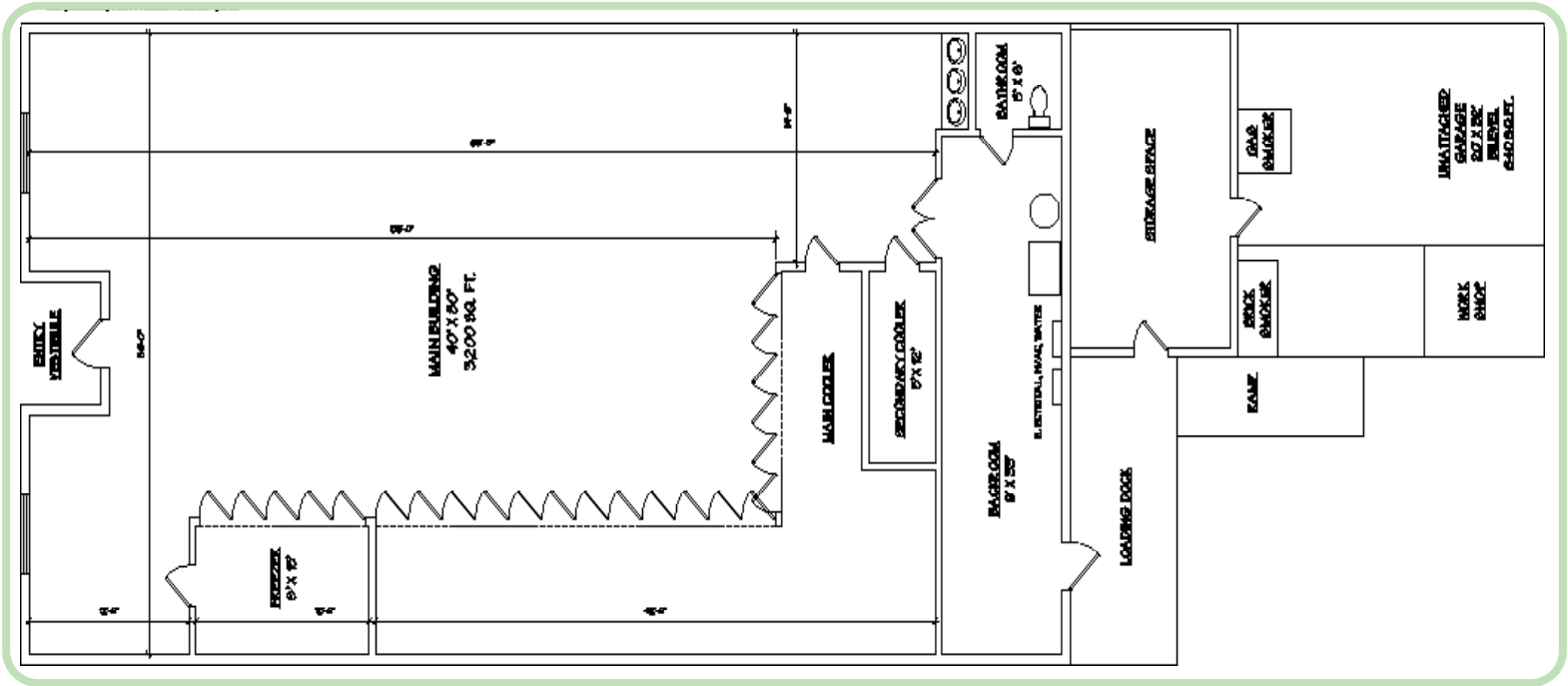
IMPROVEMENTS

- Wood Laminate Flooring
- Recently Serviced Cooler Compressors
- HVAC Serviced
- New Water Heater
- Painted Interior
- Energy Efficient Bulbs
- Deep Cleaning Throughout
- Fully Vacated
- Clean Inspection & Roof Inspection



JON CHAMLIN
(312)-446-6455
jchamlin@cawleychicago.com

FLOORPLAN:



LOCATION OVERVIEW:



JON CHAMLIN
(312)-446-6455
jchamlin@cawleychicago.com

