



**RETAIL CONDO UNIT**  
BUILDING SIZE: 3,500 SF

**14300 Ronald Reagan Blvd Suite 801**  
**CEDAR PARK, TX 78641**





**TITAN REAL ESTATE**  
(512) 306-9031  
7600 Burnet Road, Suite 290  
Austin, Texas 78757

**STEPHEN BROWN**  
(512) 789-5642  
sbrown@titanre.com

**DUSTIN RIGGS**  
(512) 565-3560  
driggs@titanre.com



# 14300

RONALD REAGAN BLVD  
SUITE 801

## PROPERTY OVERVIEW

**ADDRESS** 14300 Ronald Reagan Suite 801  
Cedar Park, TX 78641

**BUILDING SIZE** 3,500 SF

**YEAR BUILT** 2024

**PARKING** 4/1,000 SF

**PRICE** \$32/NNN







# 14300

RONALD REAGAN BLVD.  
SUITE 801



**OUTSTANDING  
LOCATION**



**BROAD  
ZONING**



**HIGHLY  
ACCESSIBLE**



**NEWLY  
BUILT**

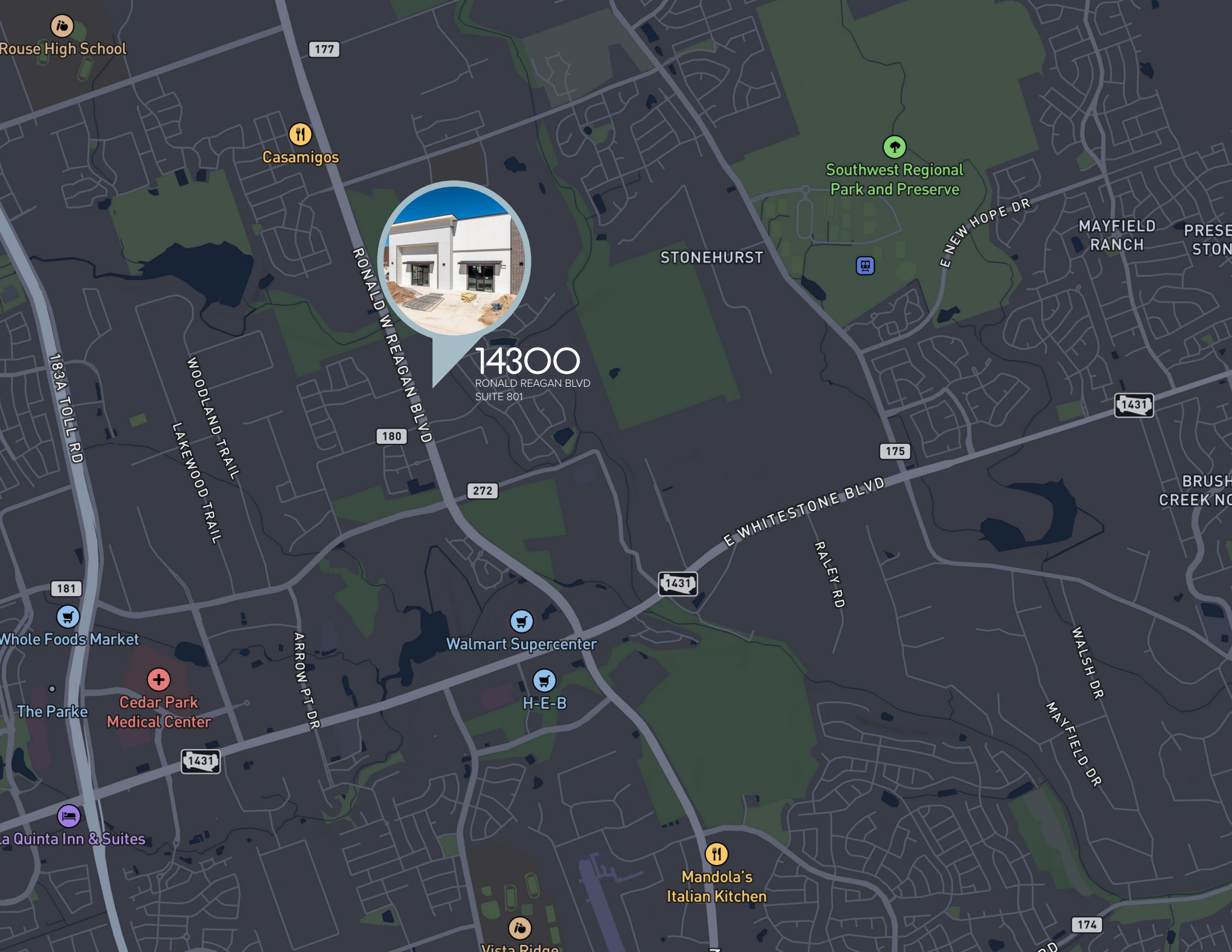
## INVESTMENT HIGHLIGHTS





14300  
RONALD REAGAN BLVD





Rouse High School

177

Casamigos



14300

RONALD REAGAN BLVD  
SUITE 801

STONEHURST

Southwest Regional  
Park and Preserve

MAYFIELD  
RANCH

PRESE  
STON

180

272

175

1431

BRUSH  
CREEK NO

E WHITESTONE BLVD

RALEY RD

WALSH DR

MAYFIELD DR

174

183A TOLL RD

WOODLAND TRAIL  
LAKWOOD TRAIL

ARROW PT DR

181

Whole Foods Market

The Parke

Cedar Park  
Medical Center

1431

La Quinta Inn & Suites

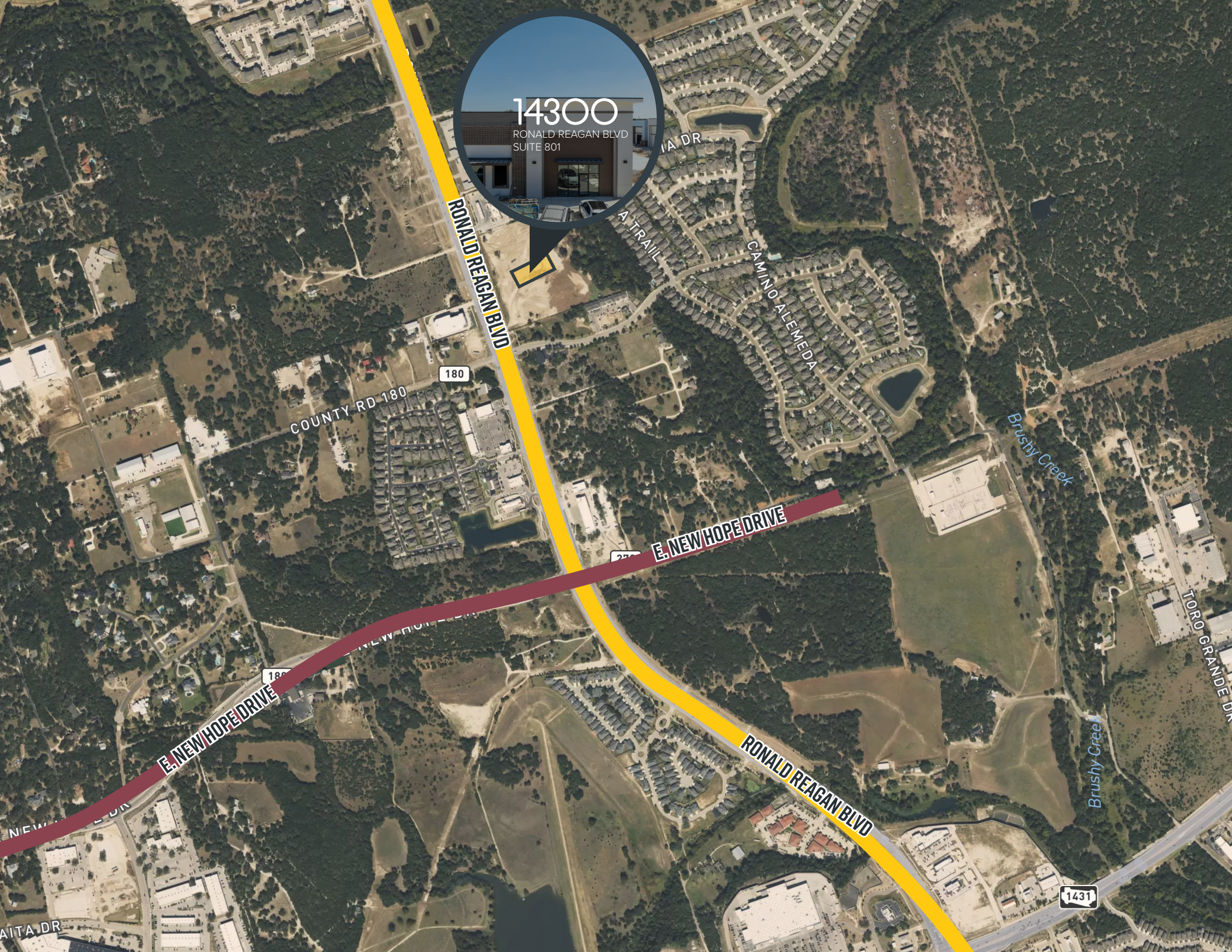
Walmart Supercenter

H-E-B

Mandola's  
Italian Kitchen

Vista Ridge







## MARKET OVERVIEW

### CEDAR PARK, TEXAS

Cedar Park, Texas, is a rapidly growing suburb located just 20 miles northwest of downtown Austin. Known for its strong community focus, excellent schools, and thriving local economy, Cedar Park has become one of the most desirable areas for families and businesses alike. The city's proximity to Austin allows for easy access to the larger metro area's tech and innovation hubs while offering a more suburban and relaxed lifestyle.

With a population exceeding 80,000, Cedar Park has seen consistent growth due to its affordable housing options, strong infrastructure, and business-friendly policies. The median household income in Cedar Park is approximately \$101,086, reflecting the area's economic vitality. Cedar Park also boasts a diverse demographic mix and an increasingly sophisticated consumer base, making it an ideal location for retail developments.



TOTAL POPULATION

**82,220**



MEDIAN AGE

**34.7**



HOUSEHOLDS

**27,453**



MEDIAN HOUSEHOLD  
INCOME

**\$101,086**



HAVE A BACHELORS  
DEGREE OR HIGHER

**49%**



POPULATION AGE 16+  
IN THE LABOR FORCE

**43,458**

Source: ESRI, U.S. Census Bureau, City of Cedar Park - Development Services

