

926 NATOMA STREET

SAN FRANCISCO CA 94103

± 3,750 SQ FT FLEX/OFFICE BUILDING FOR LEASE



THE  GROUP

PROPERTY OVERVIEW

926 NATOMA STREET

Lease Rate	\$24 PSF M.G.
Building Sq Ft	± 3,750
Cross Street	10th Street
Year Built	1924
APN	3510-031
Zoning	RED-MX

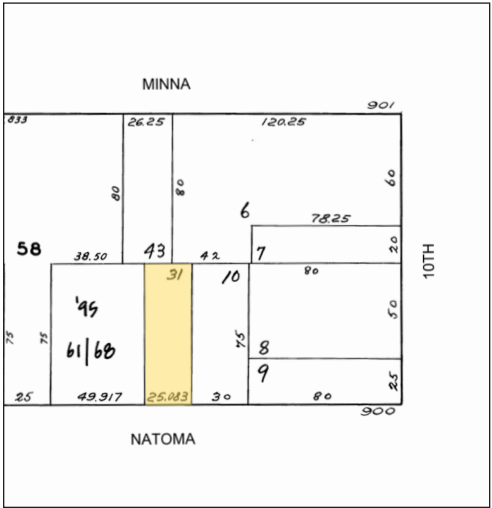
926 Natoma Street is a flex/office building that consists of approximately 3,750 square feet across two floors in the South of Market neighborhood of San Francisco.

The ground floor features a 10' foot drive-in door, one restroom with a shower, and five parking spaces. The second floor is an office space that has a reception area, one conference room, one private office, an open work area, a kitchen, and one restroom.

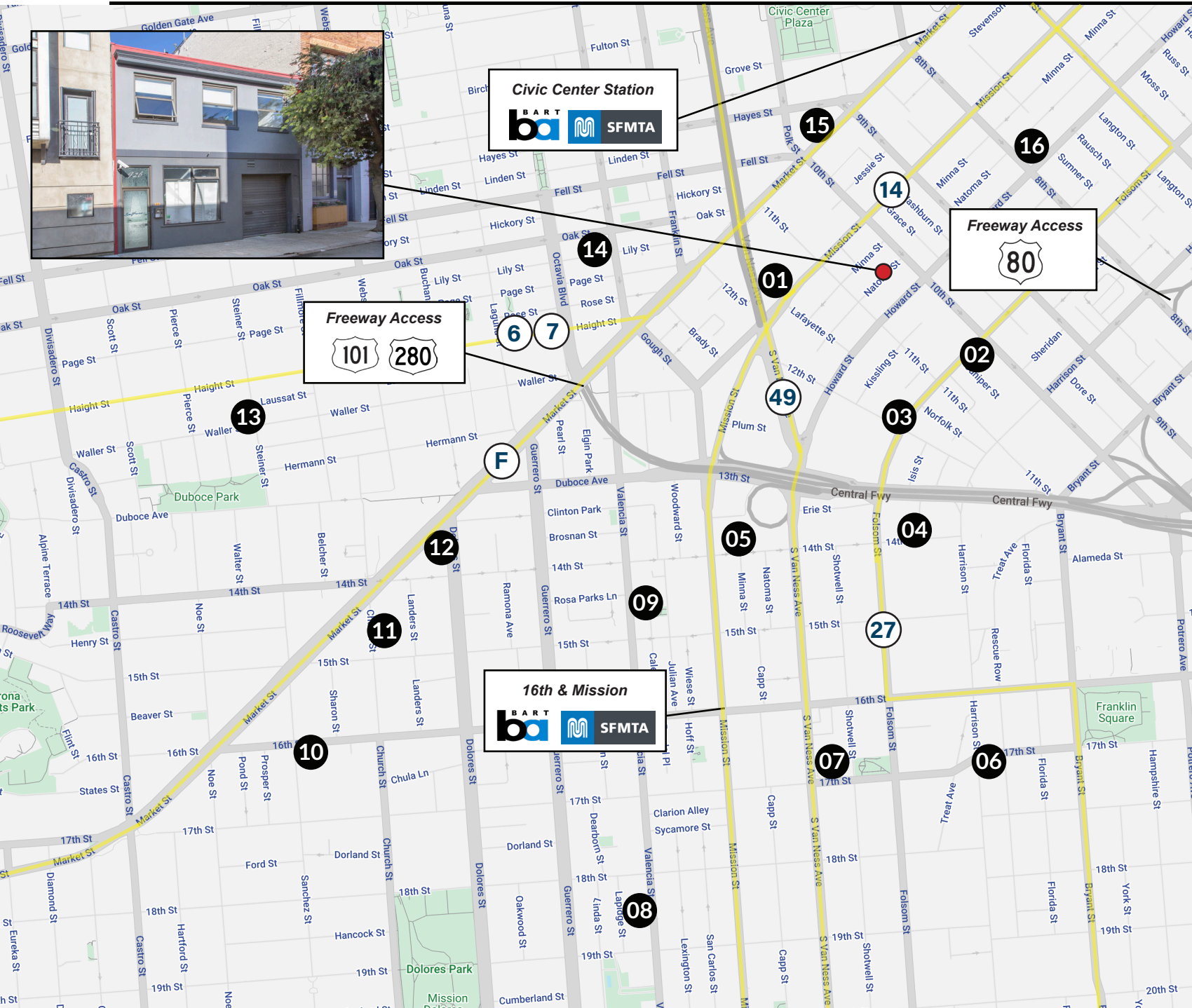
926 Natoma Street offers full building identity, significant power with 400 amps, and flexible zoning which makes this an ideal space for a variety of businesses.

This property is close to freeway access points, making it easily accessible by car, and has an abundance of public transportation nearby. 926 Natoma Street is also close to cafés, restaurants, and many well-established local businesses.

- ± 3,750 Sq Ft Flex/Office Building
- Full Building Identity
- Five (5) Car Parking
- 10' Drive-In Door | Heavy Power
- Second Floor Office Space
- Reception Area, Kitchen, Conference Room, Office(s)
- Freeway Access & Public Transportation Nearby



LOCATION MAP



LOCATION MAP

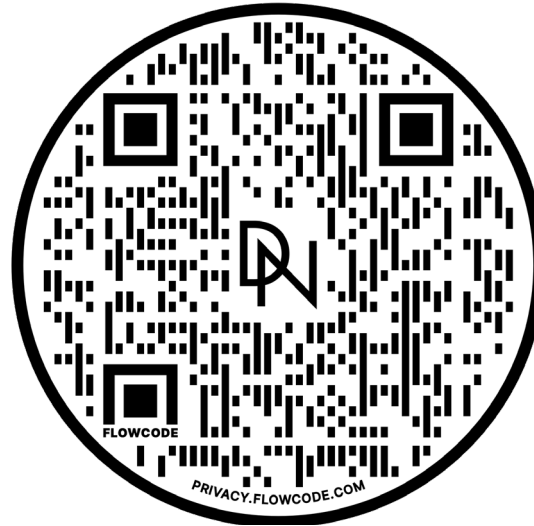
- 1) Equinox
- 2) Sextant Coffee Roasters
- 3) The Willows
- 4) Pink Onion
- 5) Standard Deviant Brewing
- 6) Gus's Community Market
- 7) Mission Bowling Club
- 8) Souvla
- 9) Four Barrell Coffee
- 10) Kitchen Story
- 11) Il Casaro Pizzeria
- 12) Whole Foods
- 13) Cafe Reveille
- 14) Rich Table
- 15) Starbucks
- 16) Harvest Urban Market

Nearby MUNI

- | | |
|--------------|---------------------|
| F Market | 6 Haight/Parnassus |
| J Church | 7 Haight/Noriega |
| K Ingleside | 14 Mission |
| M Ocean View | 27 Bryant |
| N Judah | 49 Van Ness/Mission |



COMPASS COMMERCIAL



Scan the QR code for more information about
926 Natoma Street.

LENA KWANG

Lena@theDNgroupSF.com

714.313.0585

DRE 02156531

DAVIS NGUYEN

Davis@theDNgroupSF.com

415.412.5703

DRE 01509978

CONFIDENTIALITY & DISCLOSURE

Compass is a real estate broker licensed by the State of California and abides by Equal Housing Opportunity laws. License Number 01991628, 01527235, 1527365. All material presented herein is intended for informational purposes only and is compiled from sources deemed reliable but has not been verified. Changes in price, condition, sale or withdrawal may be made without notice. No statement is made as to the accuracy of any description. All measurements and square footage are approximate.