



# THE LANDING

*at River's Bend*

## NOW PRE-LEASING!



**EXCITING NEW RETAIL CENTER IN GROWING AREA OF CHESTERFIELD COUNTY NEAR LEGO**

### FEATURES

- New, high quality construction with build to suit opportunities
- Endcaps and restaurant outdoor patios available
- Excellent visibility on East Hundred Rd / Route 10 in Chester
- Easy access to I-95 (< 4.0 miles) and I-295 (2.5 miles)
- Monument signage available
- ± 55,000 average vehicles per day

### DEMOGRAPHICS

	3 mile	5 mile	10 mile
Population	21,213	61,559	245,880
Households	7,529	21,731	90,124
Average Income	\$109,788	\$92,816	\$83,598

### DETAILS

**Space Available**      **Restaurant**      ± 1,200 SF – 6,000 SF  
**Retail / Office**      ± 1,200 SF – 20,000 SF

#### Nearby:



Food Lion, Bon Secours Family Care, Sheetz, CVS, ABC, River's Bend Eyecare, Rumble & Associates, Goddard School, FirstBank, Morris Cardiovascular, Allstate, Rudy Coyner & Associates, Marco's Pizza, El Caporal, Native Sun Tan, Evalasting Child Development, Candlewood Suites, Sophia Marie Patisserie

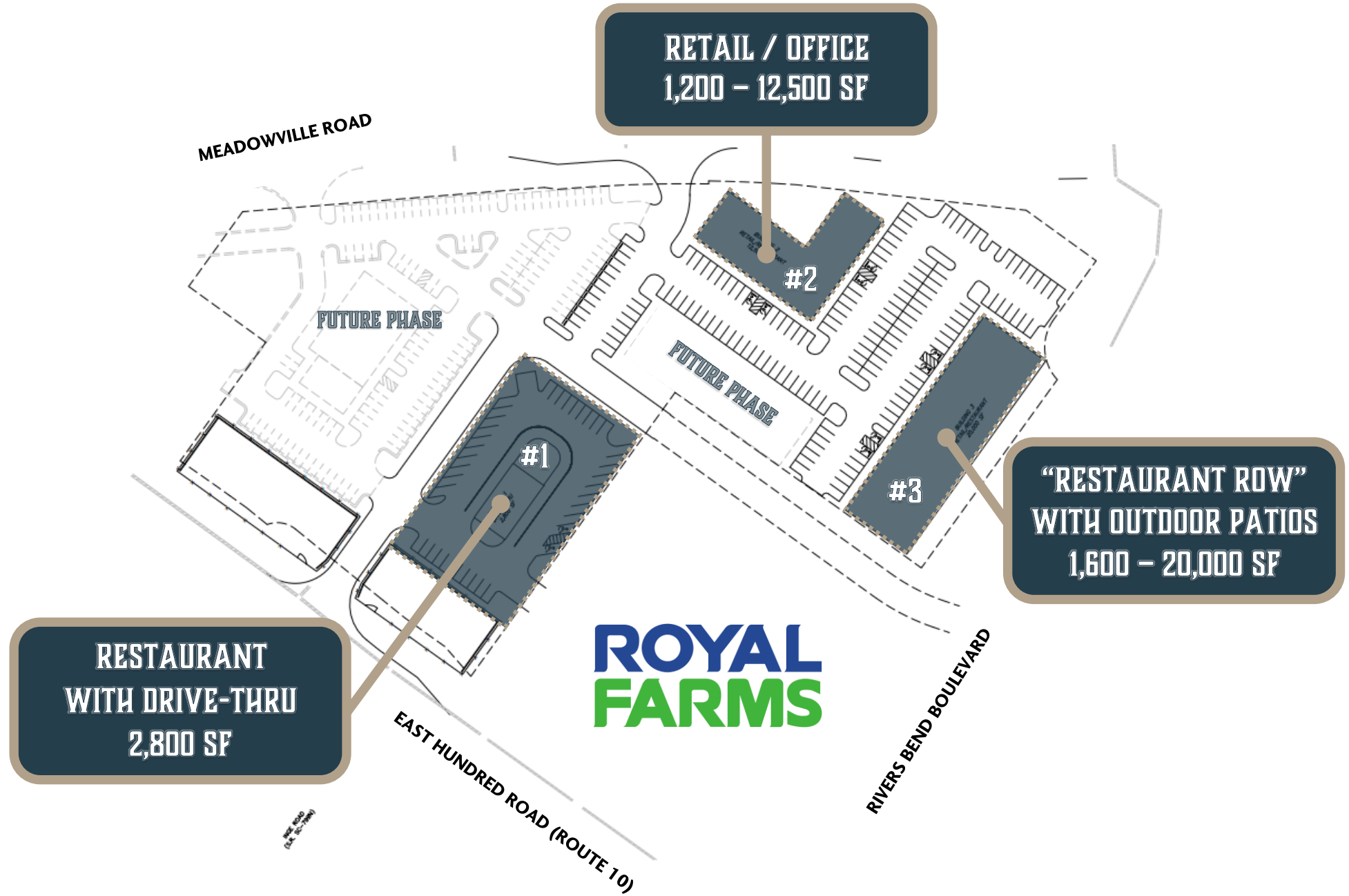


### CONTACT

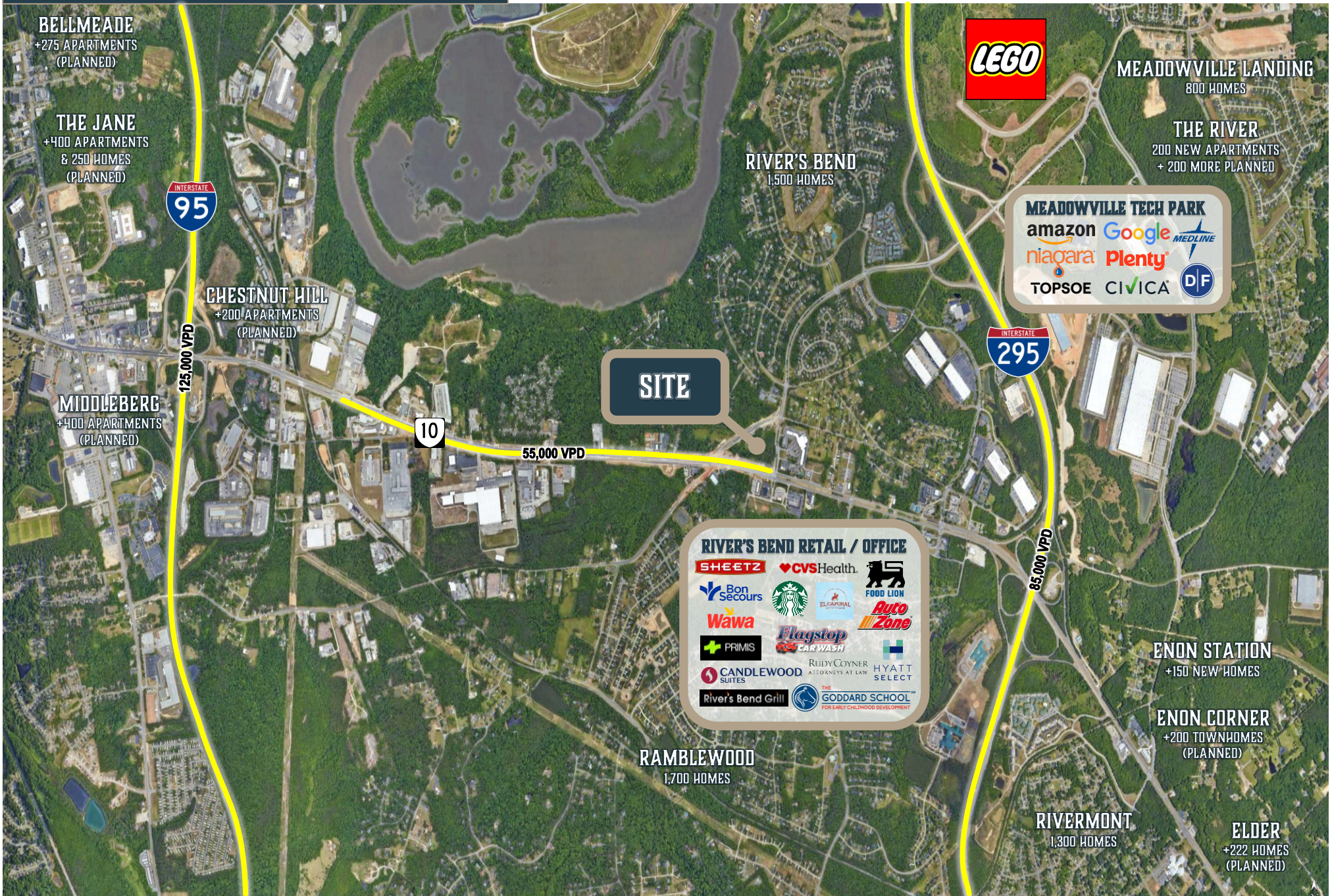
Sean Eichert, (804) 601-0374  
 seichert@realestateservicesco.com, realestateservicesco.com

Real Estate Services, Co.  
 13281 River's Bend Blvd, Suite 201, Chester, VA 23836

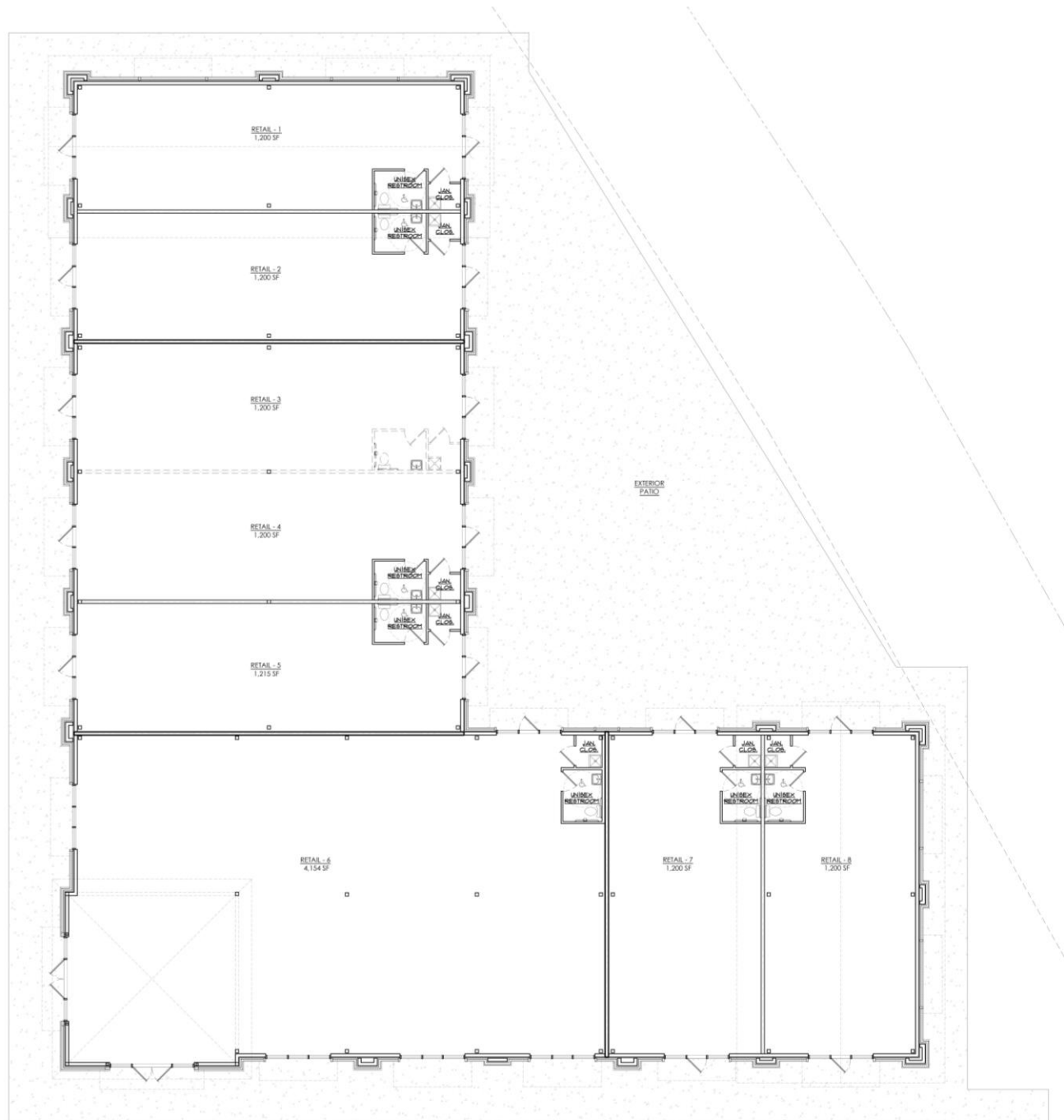
# SITE PLAN



# AERIAL PLAN



# UNIT PLANS – BUILDING #2



# UNIT PLANS – BUILDING #3

