

Multi Tenant | For Lease

CBRE

KIFER BUSINESS CENTRE

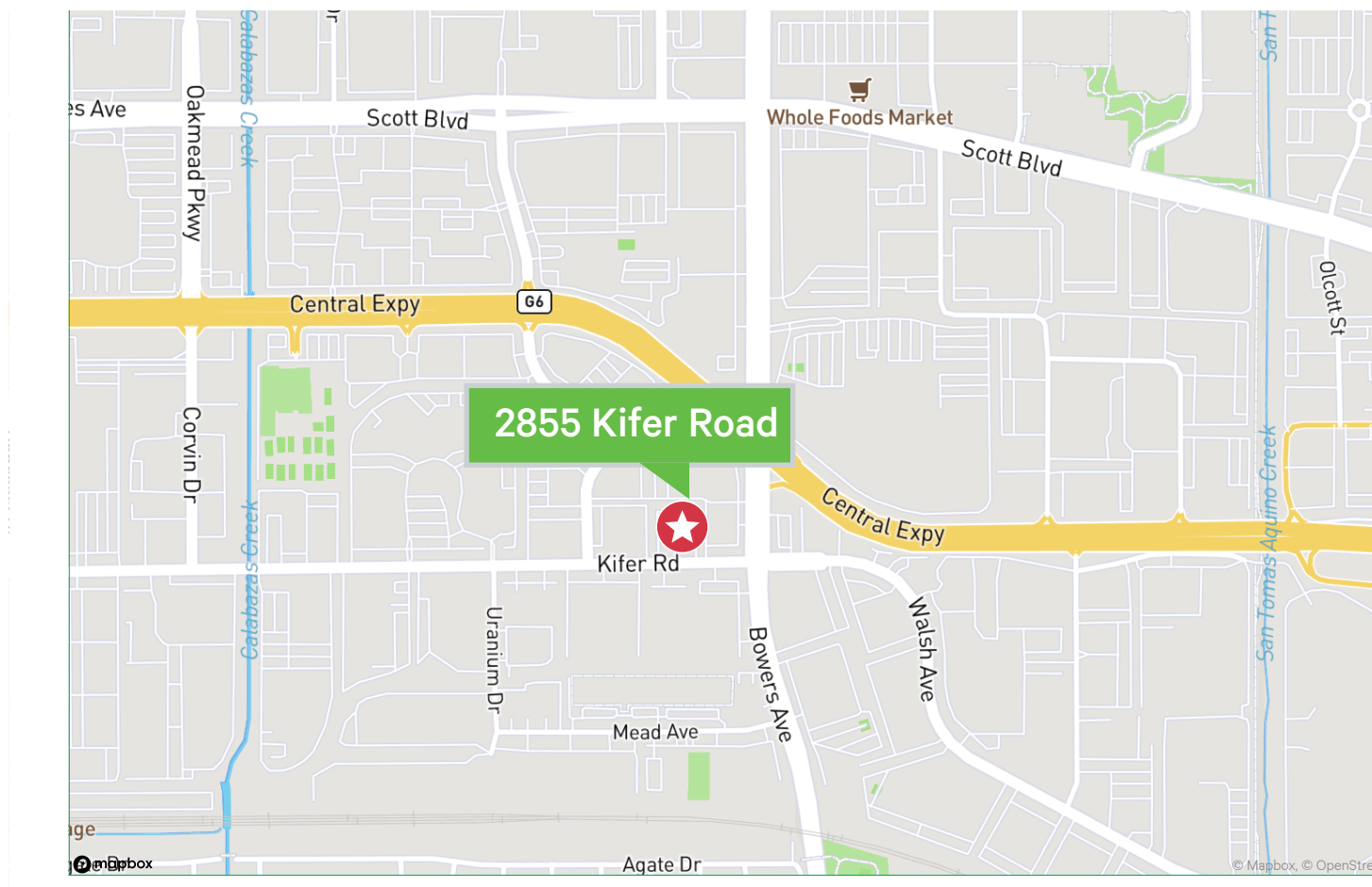
2855 Kifer Road

Santa Clara, CA
www.cbre.com

±1,140 SF - ±1,727 SF



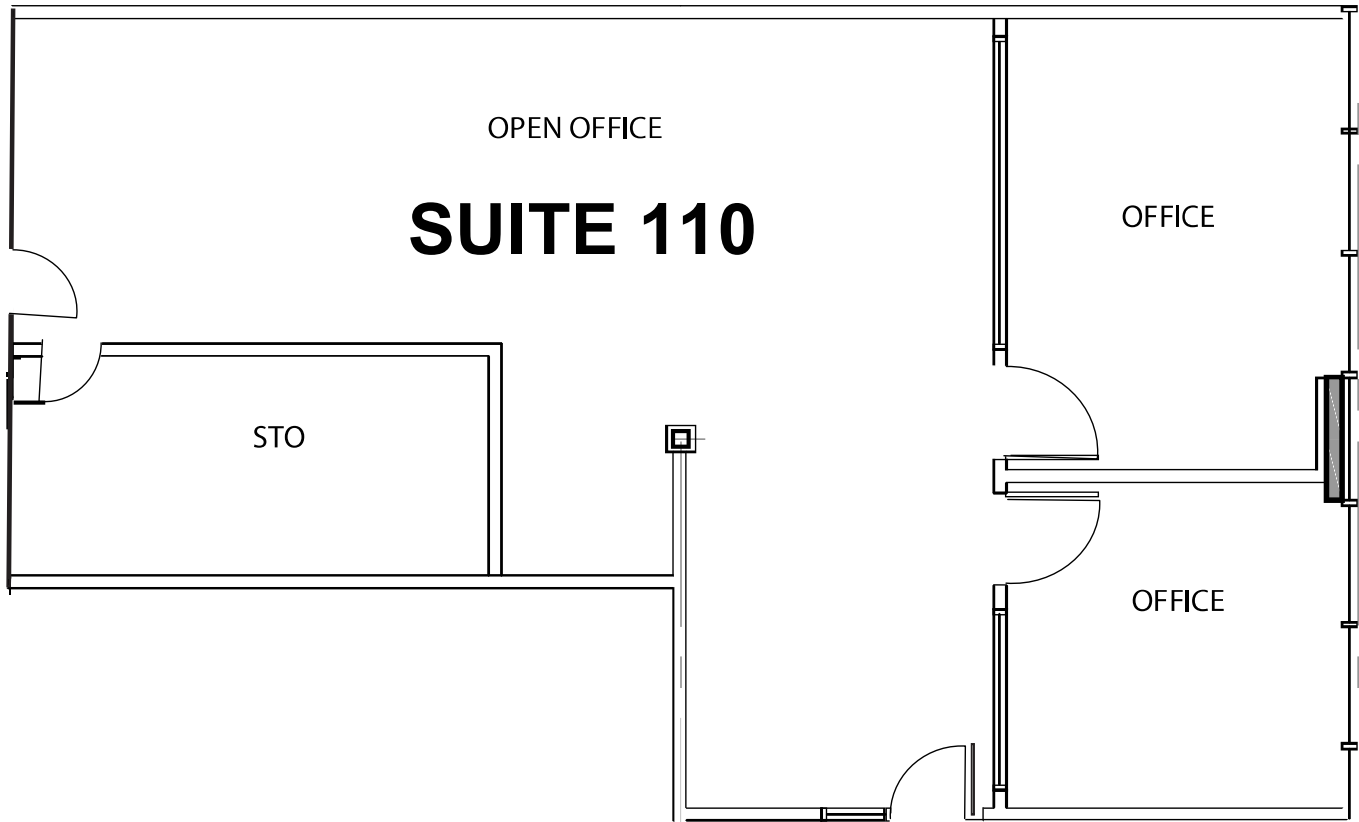
Property Map



Location Highlights

- + Central Silicon Valley location with easy access to Highway 101 and Central, Lawrence and San Tomas Expressways
- + Near San Jose International Airport
- + Newly renovated building with market-ready interiors, coffee bars and elevator
- + Ample parking
- + Service oriented ownership
- + Atrium setting suitable for informal meetings and lunches
- + Down the street from Santa Clara Square Market Place with restaurants, shops and fitness options
- + Call to show

Floor Plan

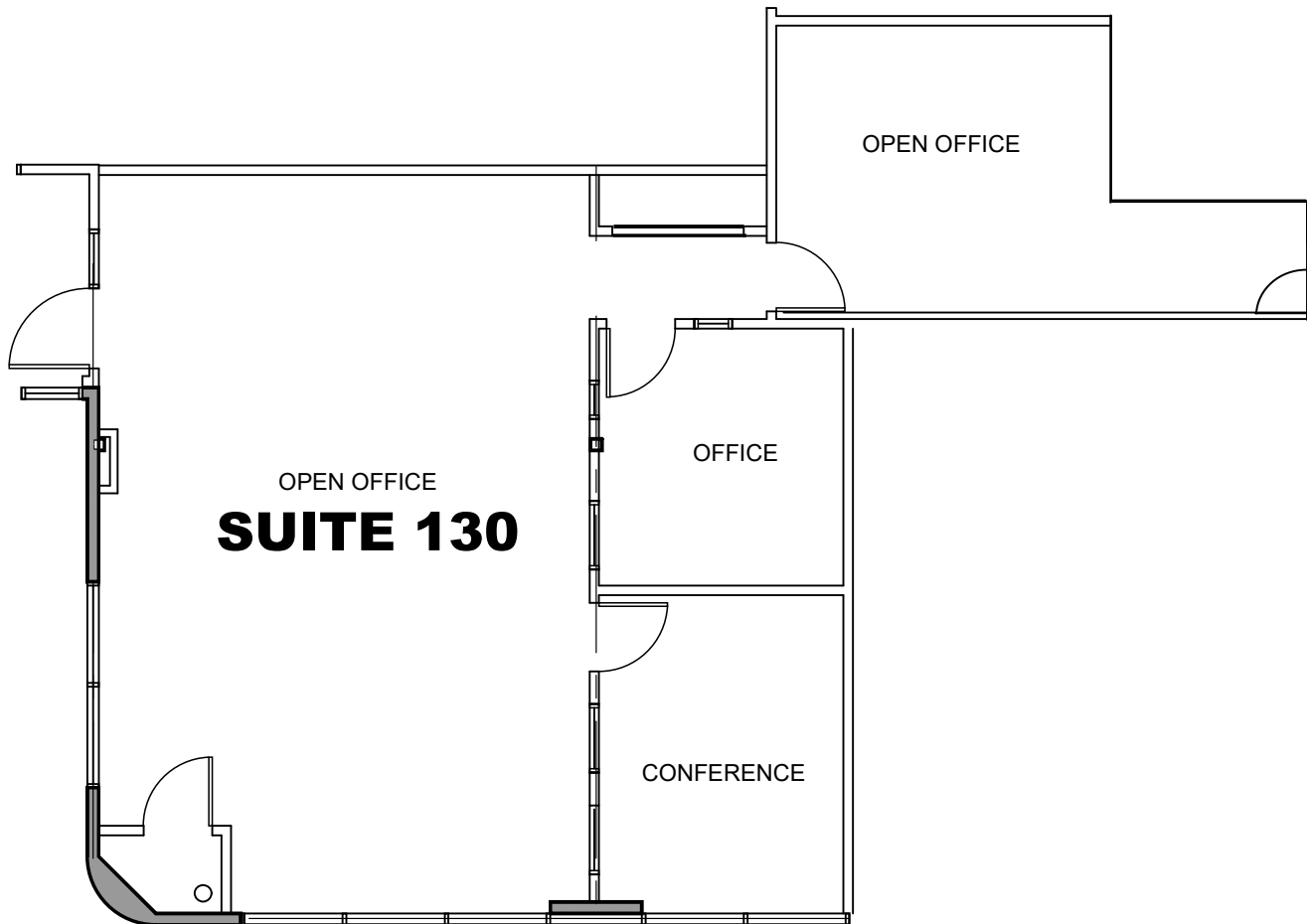


Property Features

- + ±1,140 SF
- + Furnished Suite, complete with 5 Cubes and Desks
- + 1 Private Office
- + 1 Conference Room, Furnished with Tables and Chairs
- + Plug 'N Play Furniture, Phone & Data Lines
- + Small IT Room with Dedicated Colling, Individual Power Panel, and Room for Storage.
- + Access to Common Kitchenette with Refrigerator, Microwave Oven and Sink
- + Available with 30 days' notice.
- + Asking: \$2.85/SF FSG

FIRST FLOOR

SUITE 130: ±1,727 SF

**Suite Details**

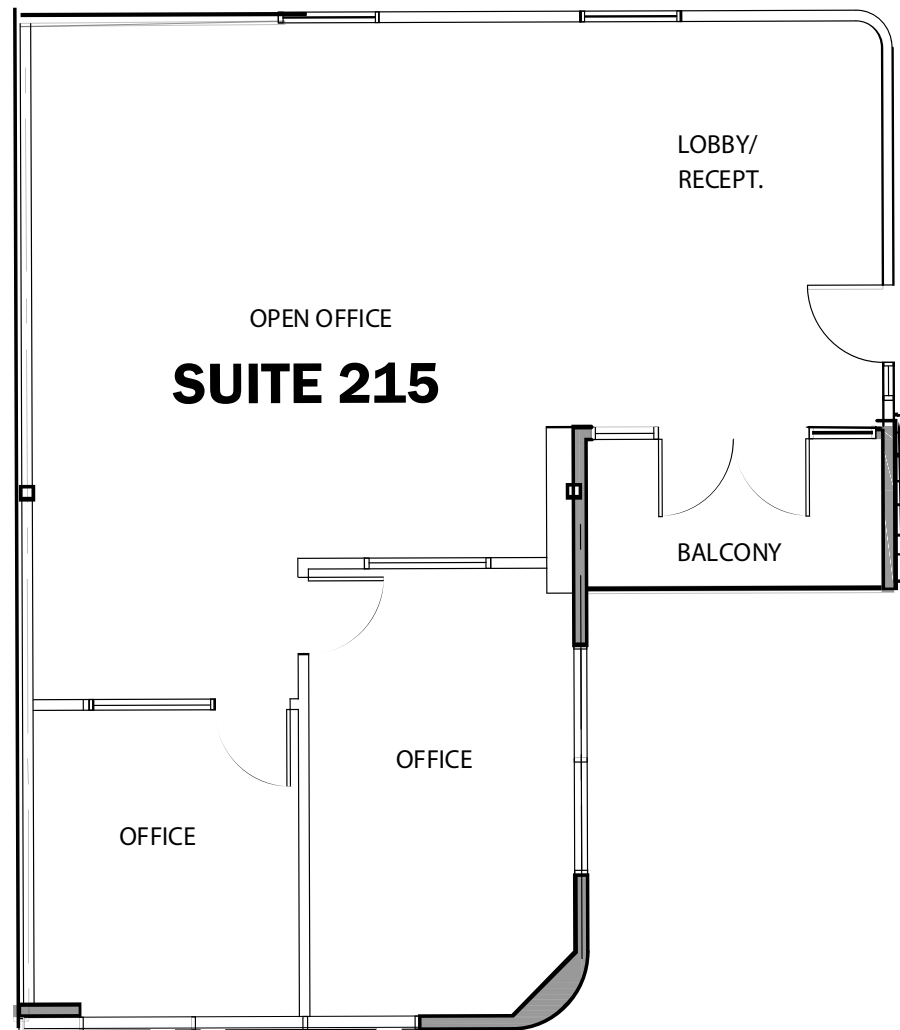
- + ±1,727 SF
- + Furnished Suite, complete with Conference Tables and Chairs and 8 Cubes
- + 2 Private Offices
- + Plug 'N Play Furniture, Phone & Data Lines
- + Access to Common Kitchenette with Refrigerator, Microwave Oven and Sink
- + Available with 30 days' notice
- + Asking rate \$2.85/SF FSG

Suite 130



SECOND FLOOR

SUITE 215: ±1,366 SF

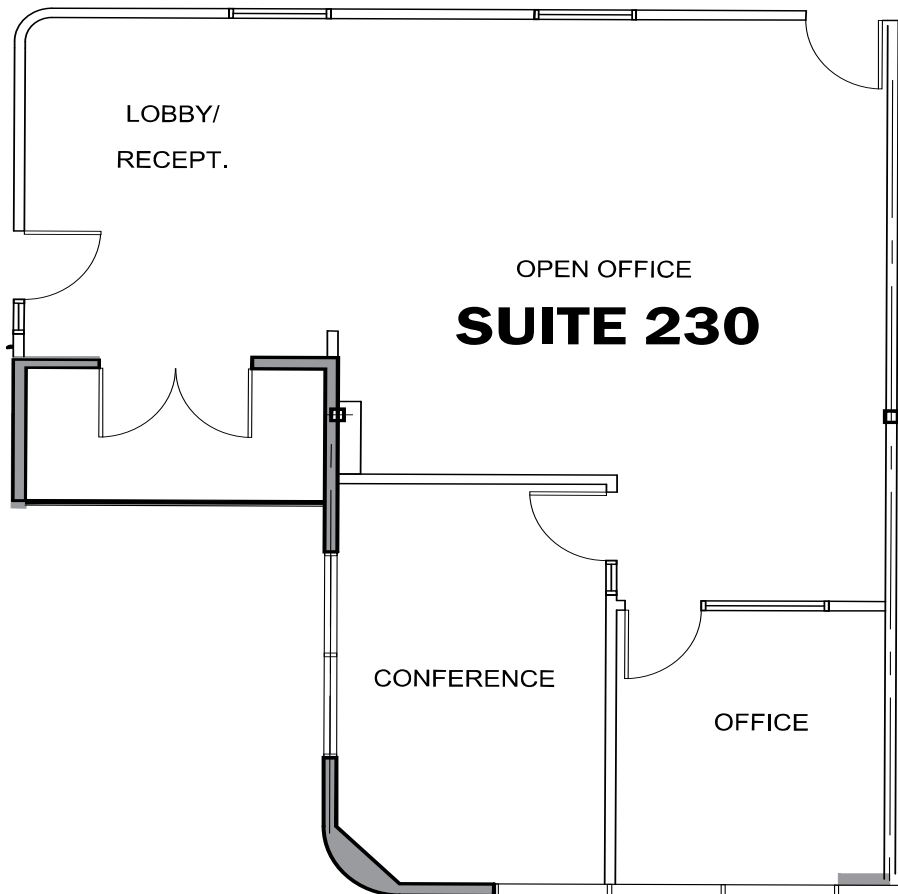


Suite Details

- + ±1,366 SF
- + Furnished Suite, complete with Conference Tables and Chairs and 7 Cubes
- + 2 Private Offices
- + Plug 'N Play Furniture, Phone & Data Lines
- + Access to Common Kitchenette with Refrigerator, Microwave Oven and Sink
- + Asking rate \$2.85/SF FSG

SECOND FLOOR

SUITE 230: ±1,354 SF



Suite Details

- + ±1,354 SF
- + Private Office furnished
- + 1 Conference Room, furnished with tables and chairs.
- + Phone/Storage Closet
- + Private Deck
- + Plug & Play: 7 Workstations with chairs, wired for data, phone and power.
- + Available 2/1/2026

First Floor Plan



AVAILABLE

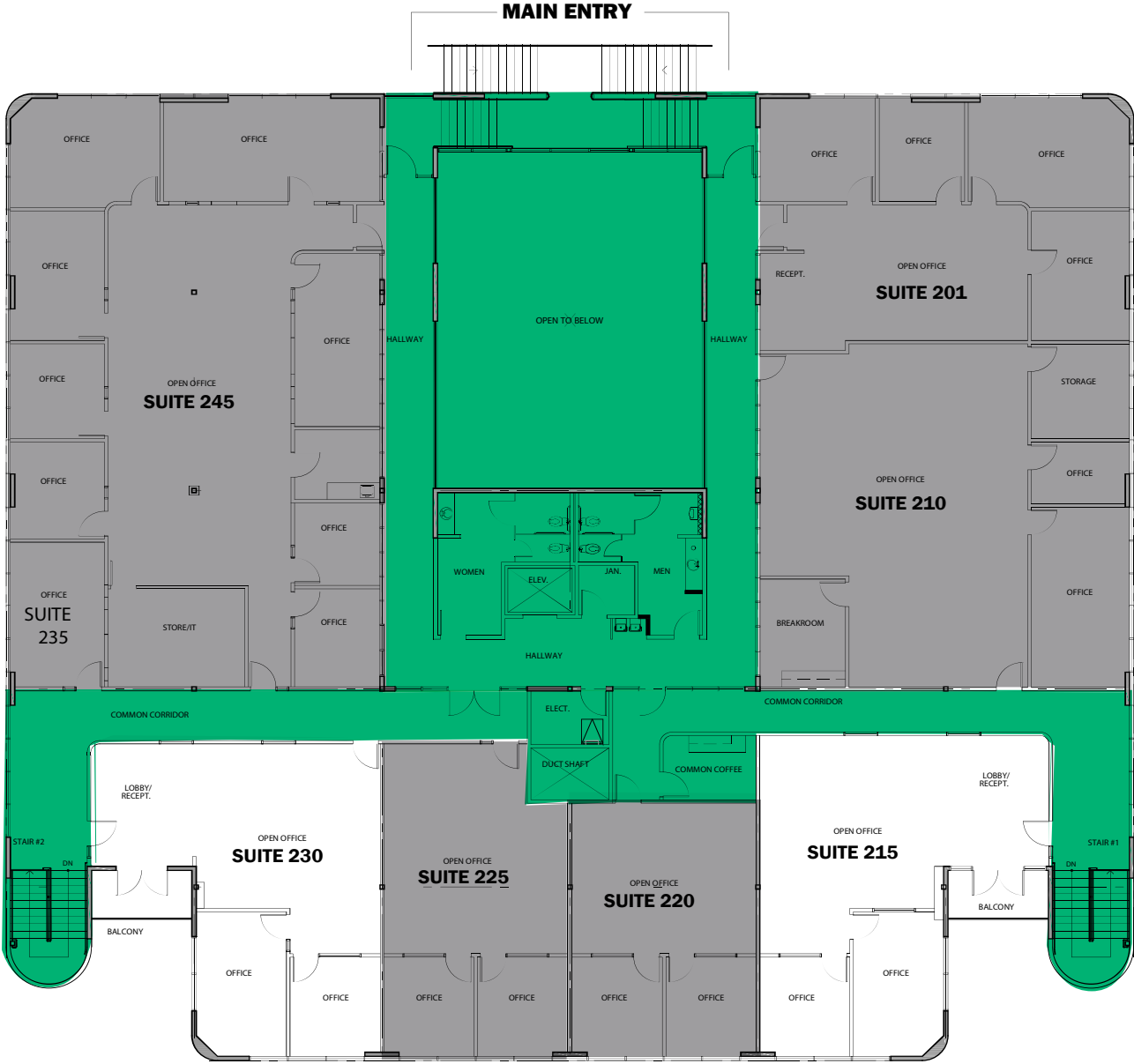


COMMON AREA



LEASED

Second Floor Plan



AVAILABLE

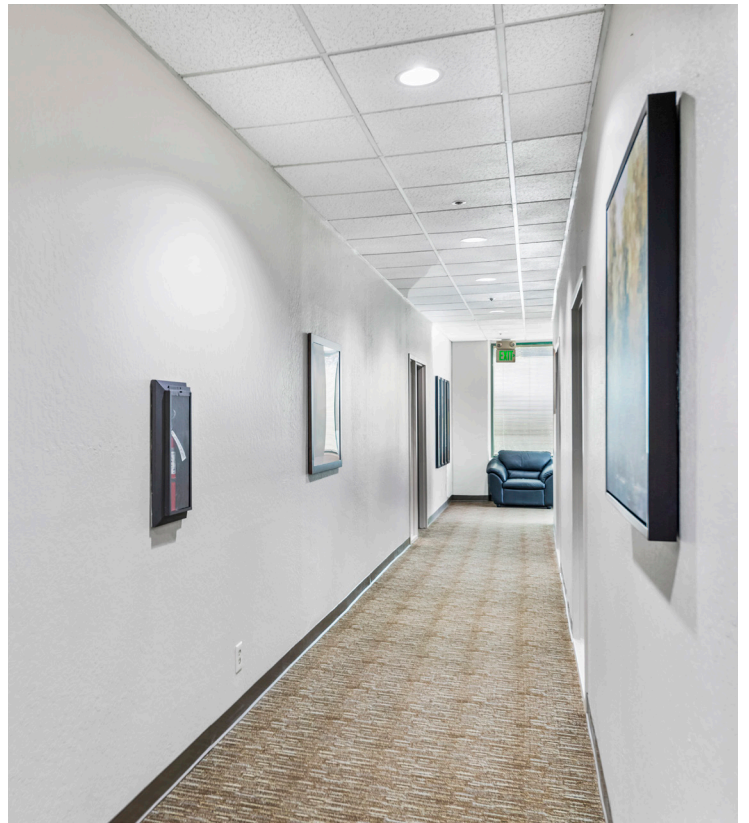


COMMON AREA



LEASED

Common Areas





Contact Us

Tiffany Bird
Senior Associate
+1 408 453 7450
tiffany.bird@cbre.com
Lic 01936335

© 2025 CBRE, Inc. All rights reserved. This information has been obtained from sources believed reliable but has not been verified for accuracy or completeness. CBRE, Inc. makes no guarantee, representation or warranty and accepts no responsibility or liability as to the accuracy, completeness, or reliability of the information contained herein. You should conduct a careful, independent investigation of the property and verify all information. Any reliance on this information is solely at your own risk. CBRE and the CBRE logo are service marks of CBRE, Inc. All other marks displayed on this document are the property of their respective owners, and the use of such marks does not imply any affiliation with or endorsement of CBRE. Photos herein are the property of their respective owners. Use of these images without the express written consent of the owner is prohibited.