

Carolina Medical Plaza

3010 Farrow Road, Columbia, SC 29204



Medical Offices Available

SIZE
40,466 RSF

PARKING RATIO
4.0 per 1,000 RSF

- Anchored by Prisma Health-Midlands Senior Care, PT/OT and more provide an opportunity for referral partners
- Highly visible from Farrow Rd. and Colonial Dr.
- Generous Tenant Improvement Allowance package and flexible lease terms
- On-Site Security at Building Entrance
- Well maintained landscaping
- Proximity to a variety of restaurants in both Bull Street and NOMA districts.
- 1,554-8,730 available square feet

Three-story medical office building adjacent to Prisma Health Richland Hospital Campus.

POPULATION (5-MILE RADIUS)

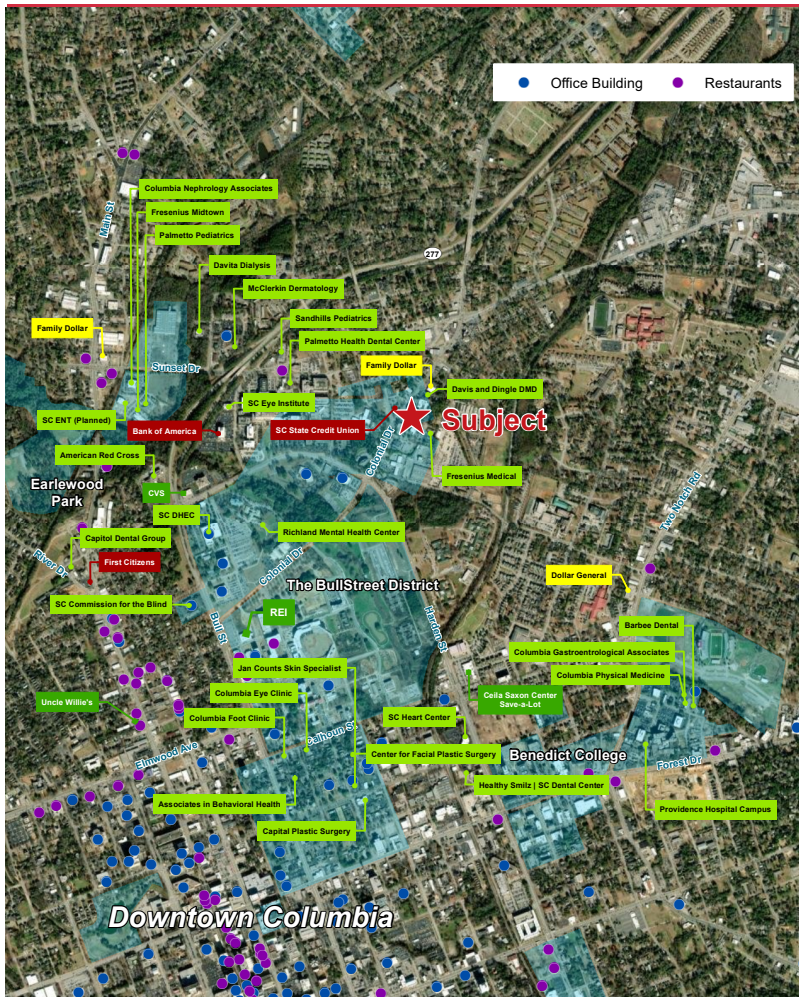
170,033

AVERAGE HOUSEHOLD INCOME (5-MILE RADIUS)

\$81,435

PERCENT OF POPULATION INSURED (5-MILE RADIUS)

72.8%



NEARBY HOSPITALS	DISTANCE	DRIVE TIME
1. Prisma Health Richland Hospital	0.7 mi	3 min
2. MUSC Health Columbia Medical Center Downtown	1.8 mi	6 min

SURROUNDING POINTS OF INTEREST

- CVS Pharmacy
- Bull Street Development
- NOMA Development
- Tropical Smoothie Cafe
- Subway
- The Warmouth
- Publico at Bull Street
- Hotel Trundle
- Chick-Fil-A
- Indah Coffee



JEFF HEIN, SIOR | SHAREHOLDER & BROKER
803 744 9825
jhein@naicolumbia.com

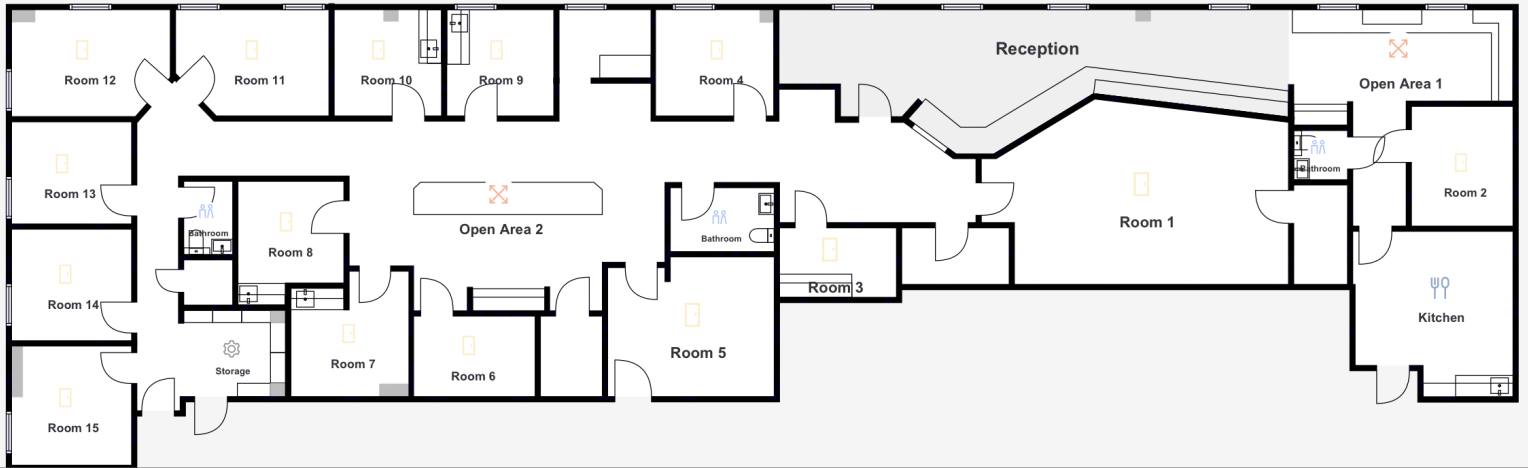
WILL DUPREE | BROKERAGE ASSOCIATE
803 744 9822
wdupree@naicolumbia.com

HOPE ANDREWS | BROKERAGE ASSOCIATE
803 744 9869
handrews@naicolumbia.com

CALL BROKERS FOR PRICING

Suite 200

5,326 RSF - can be combined with Suites 230 & 240 (8,730 RSF)



Suite 230

1,850 RSF - can be combined with Suite 200 (7,176 RSF)



Suite 250

1,554 RSF - can be combined with Suite 240 (3,404 RSF)

