

# Prestige Professional Center

475 W. 55th Street, Countryside, Illinois

# For Lease



## Dental & Professional Suites

1,390 RSF - 1,882 RSF

- ◇ Prime Corner of 55th & Plainfield Road
- ◇ Stop Lighted Intersection
- ◇ Monument Signage - Across Memorial Park
- ◇ Renovated Dental Space w Modern Finishes
- ◇ 1 Mile Radius: 31,000 Population

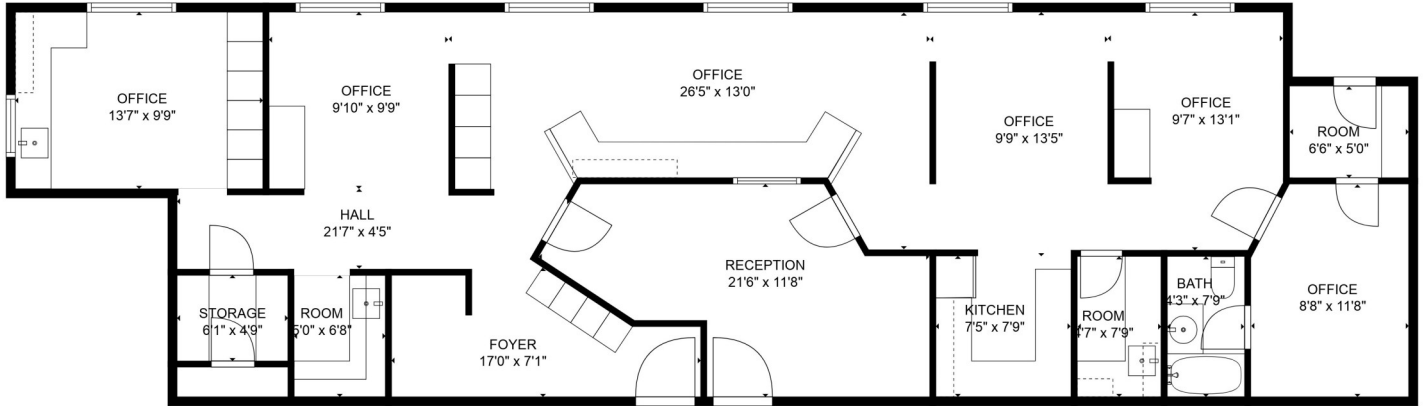


*Schulz*  
PROPERTIES, LTD.

Theresa Schulz

630.737.1200

# Suite 208/210 1,882 RSF



**Schulz**  
PROPERTIES, LTD.

**Theresa Schulz**

[tschulz@schulzproperties.com](mailto:tschulz@schulzproperties.com)

[www.schulzproperties.com](http://www.schulzproperties.com)

947 Maple Ave, Downers Grove, IL 60515

MAIN: 630.737.1200 \* CELL: 630.453.1230

# Suite 202/204 1,390 RSF

Plan To Be Provided

