

+/-19.26 ACRES RESIDENTIAL LAND - All or Part

FOR SALE

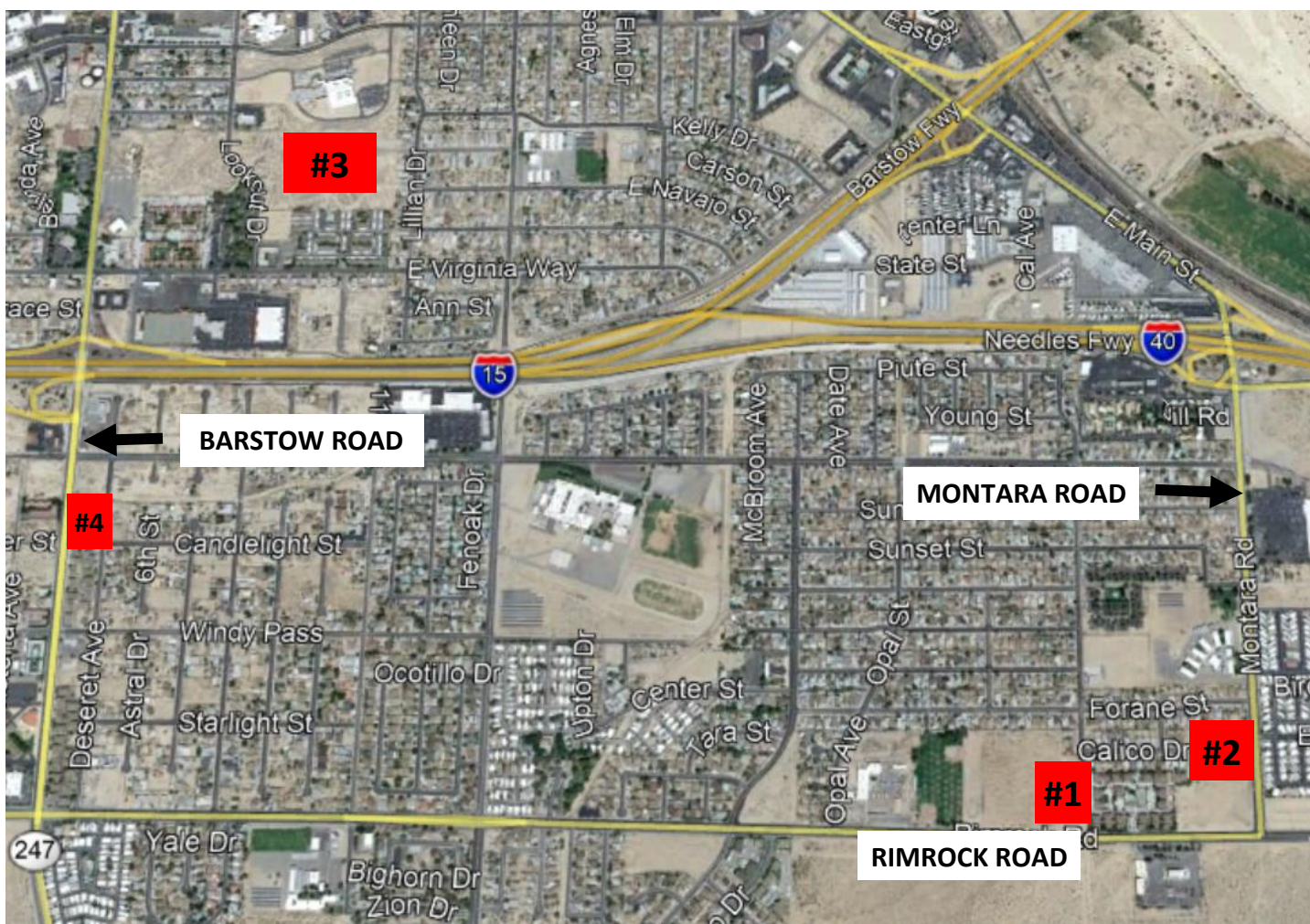
**PORTFOLIO OF FOUR EXCELLENT PARCELS
ZONED MEDIUM DENSITY**

\$6,259,273

BARSTOW, CA

Rev. 3/26/2025

SITE #3 IS IN AN OPPORTUNITY ZONE.



DISCLAIMER: The information presented herein has been obtained from sources believed to be reliable. It is not verified and we make no guarantee, warranty or representation about any portion of it. Any opinions or assumptions are used for example only and do not represent the current or future performance of the property. You and your advisors should consult a careful, independent investigation of the property and consult with your own professionals to determine its suitability for your needs to your satisfaction.

EXCLUSIVE AGENT: Frecia C. Germany, Ph.D. · Johnson Real Estate Group, Inc.

freciaj@ajohnsongroup.com · CA DRE License #0517090

LOCATIONS #1 AND #2

#1: +/- 1.96 ACRES RIMROCK ROAD WEST OF MONTARA ROAD.

APN 0183-601-04/05

#2: 3.7 acres NORTH OF NWC MONTARA ROAD AND RIMROCK

ROAD APN 0181-941-65



EXCLUSIVE AGENT: Frecia C. Germany, Ph.D., CCIM · Johnson Real Estate Group, Inc.

freciaj@ajohnsongroup.com · CA DRE License #0517090

LOCATION #3

12.64 ACRES Helen Runyan Drive (SOUTH OF THE HOSPITAL)

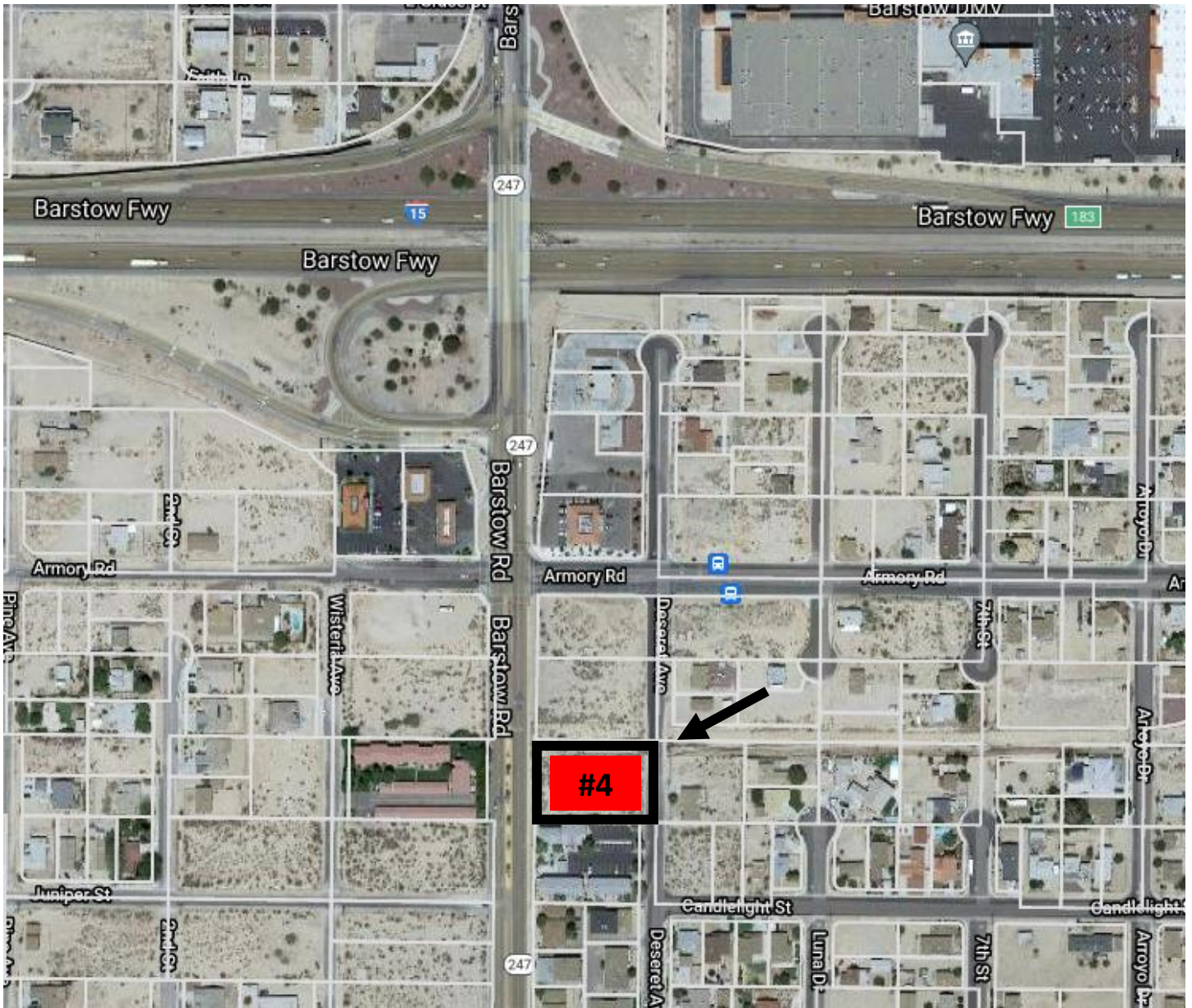
APN 0183-211-05



LOCATION #4

0.96 acres Barstow Road

APN 0183-171-22



EXCLUSIVE AGENT: Frecia C. Germany, Ph.D. · Johnson Real Estate Group, Inc.

freciaj@ajohnsongroup.com · CA DRE License #0517090