



# SHOPPES AT DORAL

## Retail Space Available

**AIDA VEGA-MEDINILLA**

CRS, CIPS, PMN, C2EX, e-PRO, PSA, AHWD, MRP  
Licensed CAM



## FOR LEASE!



### **DORAL SHOPPES FOR LEASE**

4179 - 4297 NW 107<sup>TH</sup> AVE  
DORAL FL 33178

### **SPACE AVAILABLE:**

**2,800 SQ. FT.**

### **LEASE RATE & TYPE:**

**CALL US - PSF, NNN**

**FOR MORE  
INFORMATION**



[AIDA@HORIZONREALESTATEFLORIDA.COM](mailto:AIDA@HORIZONREALESTATEFLORIDA.COM)



786.683.6073



786.336.0917



4300 SW 73<sup>RD</sup> AVE, SUITE 105, MIAMI FL 33155





# SHOPPES AT DORAL

## Retail Space Available

**AIDA VEGA-MEDINILLA**

CRS, CIPS, PMN, C2EX, e-PRO, PSA, AHWD, MRP  
Licensed CAM



### **DORAL SHOPPES FOR LEASE**

4179 - 4297 NW 107<sup>TH</sup> AVE  
DORAL FL 33178

### **SPACE AVAILABLE: -**

**2,800 SQ. FT.**

### **LEASE RATE & TYPE:**

**\$38.00 PSF, NNN**



### **LOCATION ADVANTAGES**

- Located in the heart of Doral's thriving commercial area
- Direct access to NW 107th Avenue, just minutes from Dolphin Expressway (SR 836), Palmetto Expressway (SR 826), and Florida's Turnpike
- Surrounded by dense residential neighborhoods, major employers, schools, and corporate campuses
- Walking distance to popular retail destinations, dining venues, banking institutions, and lifestyle amenities
- High visibility and strong traffic counts in a rapidly growing market



 [AIDA@HORIZONREALESTATEFLORIDA.COM](mailto:AIDA@HORIZONREALESTATEFLORIDA.COM)

 **786.683.6073**

 **786.336.0917**

THE INFORMATION CONTAINED HEREIN HAS BEEN OBTAINED FROM SOURCES DEEMED RELIABLE; HOWEVER, NO WARRANTY OR REPRESENTATION, EXPRESS OR IMPLIED, IS MADE AS TO THE ACCURACY OR COMPLETENESS OF THIS INFORMATION. ALL INFORMATION IS SUBJECT TO ERRORS, OMISSIONS, CHANGES IN PRICE, RENTAL, OR OTHER TERMS AND CONDITIONS, PRIOR SALE, LEASE, OR FINANCING, OR WITHDRAWAL WITHOUT NOTICE. ANY PROJECTIONS, OPINIONS, ASSUMPTIONS, OR ESTIMATES USED ARE FOR ILLUSTRATIVE PURPOSES ONLY AND DO NOT REPRESENT CURRENT OR FUTURE PERFORMANCE OF THE PROPERTY. NO WARRANTIES OR REPRESENTATIONS ARE MADE AS TO THE CONDITION OF THE PROPERTY OR THE PRESENCE OF ANY ENVIRONMENTAL HAZARDS, AND NONE ARE TO BE IMPLIED.



# SHOPPES AT DORAL

## Retail Space Available

**AIDA VEGA-MEDINILLA**

CRS, CIPS, PMN, C2EX, e-PRO, PSA, AHWD, MRP  
Licensed CAM

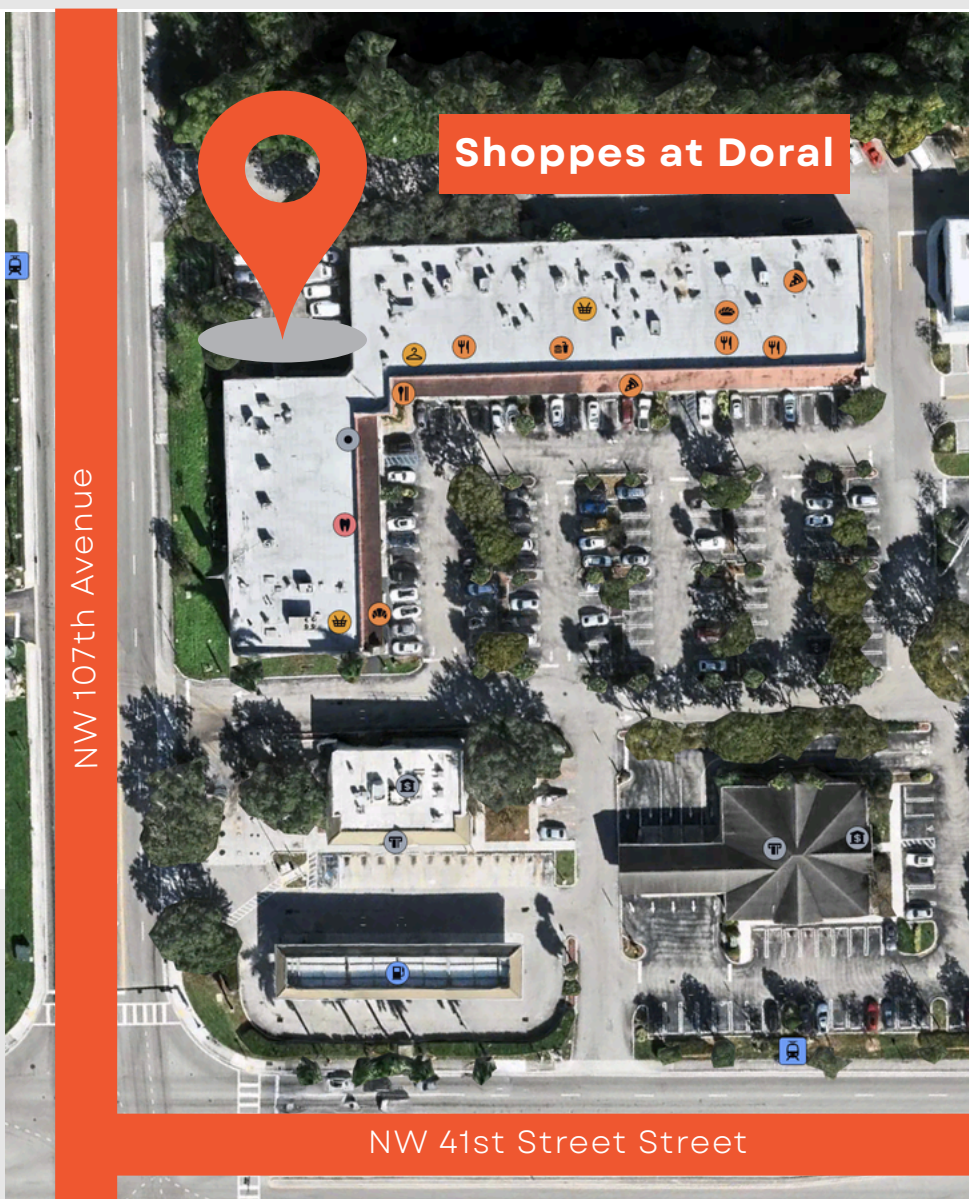


### **DORAL SHOPPES FOR LEASE**

4179 - 4297 NW 107<sup>TH</sup> AVE  
DORAL FL 33178

**SPACE AVAILABLE: -  
2,800 SQ. FT.**

**LEASE RATE & TYPE:  
\$38.00 PSF, NNN**



**LOCATION  
LOCATION  
LOCATION!!!**



**55,140  
CARS PER DAY**



 [AIDA@HORIZONREALESTATEFLORIDA.COM](mailto:AIDA@HORIZONREALESTATEFLORIDA.COM)

 **786.683.6073**

 **786.336.0917**

THE INFORMATION CONTAINED HEREIN HAS BEEN OBTAINED FROM SOURCES DEEMED RELIABLE; HOWEVER, NO WARRANTY OR REPRESENTATION, EXPRESS OR IMPLIED, IS MADE AS TO THE ACCURACY OR COMPLETENESS OF THIS INFORMATION. ALL INFORMATION IS SUBJECT TO ERRORS, OMISSIONS, CHANGES IN PRICE, RENTAL, OR OTHER TERMS AND CONDITIONS, PRIOR SALE, LEASE, OR FINANCING, OR WITHDRAWAL WITHOUT NOTICE. ANY PROJECTIONS, OPINIONS, ASSUMPTIONS, OR ESTIMATES USED ARE FOR ILLUSTRATIVE PURPOSES ONLY AND DO NOT REPRESENT CURRENT OR FUTURE PERFORMANCE OF THE PROPERTY. NO WARRANTIES OR REPRESENTATIONS ARE MADE AS TO THE CONDITION OF THE PROPERTY OR THE PRESENCE OF ANY ENVIRONMENTAL HAZARDS, AND NONE ARE TO BE IMPLIED.





# SHOPPES AT DORAL

## Retail Space Available

**AIDA VEGA-MEDINILLA**

CRS, CIPS, PMN, C2EX, e-PRO, PSA, AHWD, MRP  
Licensed CAM



### **DORAL SHOPPES FOR LEASE**

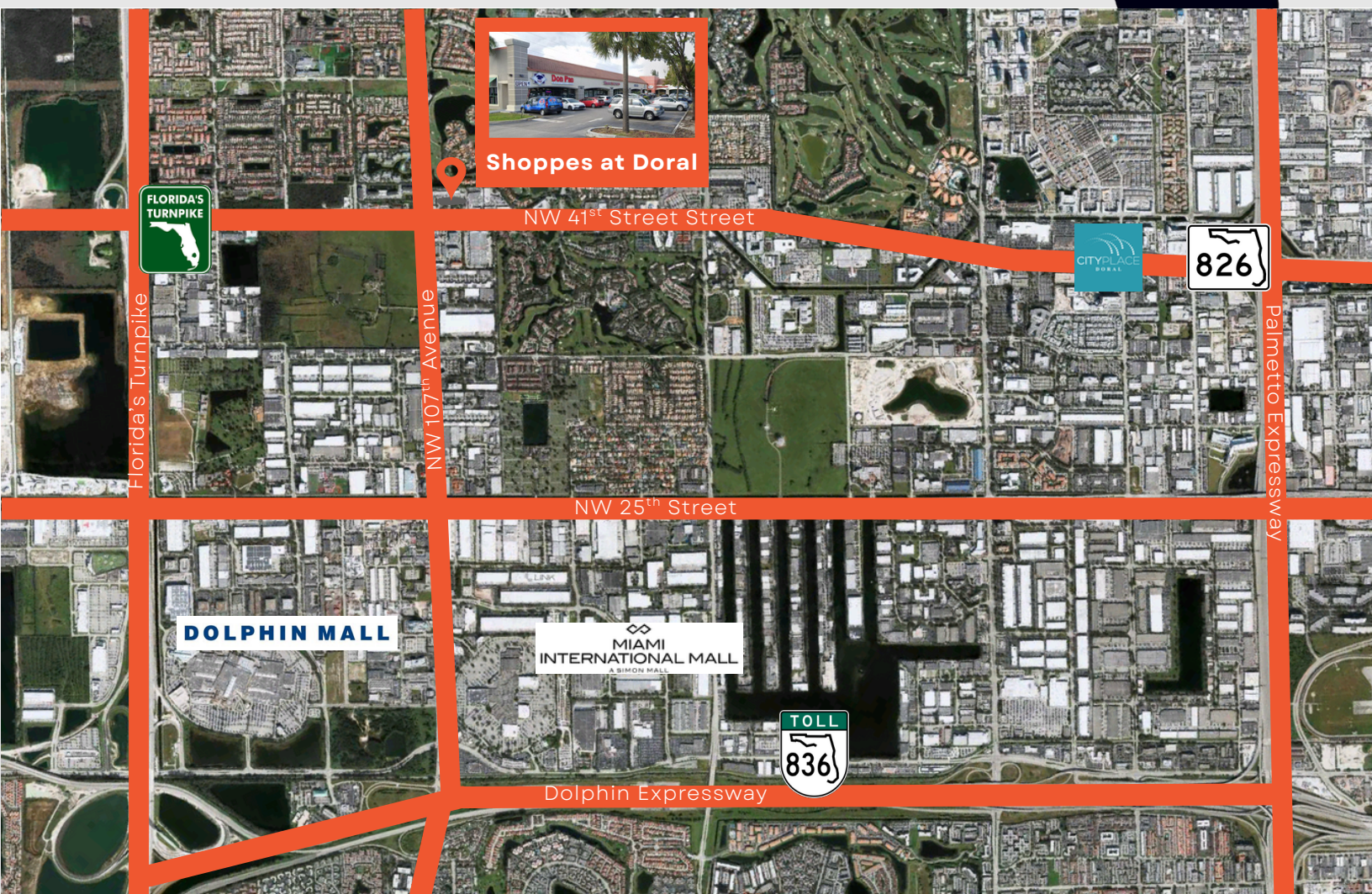
4179 - 4297 NW 107<sup>TH</sup> AVE  
DORAL FL 33178

### **SPACE AVAILABLE: -**

**2,800 SQ. FT.**

### **LEASE RATE & TYPE:**

**\$38.00 PSF, NNN**



## Aerial Map



 [AIDA@HORIZONREALESTATEFLORIDA.COM](mailto:AIDA@HORIZONREALESTATEFLORIDA.COM)

 786.683.6073

 786.336.0917

THE INFORMATION CONTAINED HEREIN HAS BEEN OBTAINED FROM SOURCES DEEMED RELIABLE; HOWEVER, NO WARRANTY OR REPRESENTATION, EXPRESS OR IMPLIED, IS MADE AS TO THE ACCURACY OR COMPLETENESS OF THIS INFORMATION. ALL INFORMATION IS SUBJECT TO ERRORS, OMISSIONS, CHANGES IN PRICE, RENTAL, OR OTHER TERMS AND CONDITIONS, PRIOR SALE, LEASE, OR FINANCING, OR WITHDRAWAL WITHOUT NOTICE. ANY PROJECTIONS, OPINIONS, ASSUMPTIONS, OR ESTIMATES USED ARE FOR ILLUSTRATIVE PURPOSES ONLY AND DO NOT REPRESENT CURRENT OR FUTURE PERFORMANCE OF THE PROPERTY. NO WARRANTIES OR REPRESENTATIONS ARE MADE AS TO THE CONDITION OF THE PROPERTY OR THE PRESENCE OF ANY ENVIRONMENTAL HAZARDS, AND NONE ARE TO BE IMPLIED.





# SHOPPES AT DORAL

## Retail Space Available

**AIDA VEGA-MEDINILLA**

CRS, CIPS, PMN, C2EX, e-PRO, PSA, AHWD, MRP  
Licensed CAM



### **DORAL SHOPPES FOR LEASE**

4179 - 4297 NW 107<sup>TH</sup> AVE  
DORAL FL 33178

**SPACE AVAILABLE: -  
1,400 SQ. FT.**

**LEASE RATE & TYPE:  
\$38.00 PSF, NNN**

# SUITE 4297



✉ [AIDA@HORIZONREALESTATEFLORIDA.COM](mailto:AIDA@HORIZONREALESTATEFLORIDA.COM)

☎ 786.683.6073

☎ 786.336.0917

THE INFORMATION CONTAINED HEREIN HAS BEEN OBTAINED FROM SOURCES DEEMED RELIABLE; HOWEVER, NO WARRANTY OR REPRESENTATION, EXPRESS OR IMPLIED, IS MADE AS TO THE ACCURACY OR COMPLETENESS OF THIS INFORMATION. ALL INFORMATION IS SUBJECT TO ERRORS, OMISSIONS, CHANGES IN PRICE, RENTAL, OR OTHER TERMS AND CONDITIONS, PRIOR SALE, LEASE, OR FINANCING, OR WITHDRAWAL WITHOUT NOTICE. ANY PROJECTIONS, OPINIONS, ASSUMPTIONS, OR ESTIMATES USED ARE FOR ILLUSTRATIVE PURPOSES ONLY AND DO NOT REPRESENT CURRENT OR FUTURE PERFORMANCE OF THE PROPERTY. NO WARRANTIES OR REPRESENTATIONS ARE MADE AS TO THE CONDITION OF THE PROPERTY OR THE PRESENCE OF ANY ENVIRONMENTAL HAZARDS, AND NONE ARE TO BE IMPLIED.





# SHOPPES AT DORAL

## Retail Space Available

**AIDA VEGA-MEDINILLA**

CRS, CIPS, PMN, C2EX, e-PRO, PSA, AHWD, MRP  
Licensed CAM



### **DORAL SHOPPES FOR LEASE**

4179 - 4297 NW 107<sup>TH</sup> AVE  
DORAL FL 33178

**SPACE AVAILABLE: -**

**1,400 SQ. FT.**

**LEASE RATE & TYPE:**

**\$38.00 PSF, NNN**

# SUITE 4249



 [AIDA@HORIZONREALESTATEFLORIDA.COM](mailto:AIDA@HORIZONREALESTATEFLORIDA.COM)

 786.683.6073

 786.336.0917

THE INFORMATION CONTAINED HEREIN HAS BEEN OBTAINED FROM SOURCES DEEMED RELIABLE; HOWEVER, NO WARRANTY OR REPRESENTATION, EXPRESS OR IMPLIED, IS MADE AS TO THE ACCURACY OR COMPLETENESS OF THIS INFORMATION. ALL INFORMATION IS SUBJECT TO ERRORS, OMISSIONS, CHANGES IN PRICE, RENTAL, OR OTHER TERMS AND CONDITIONS, PRIOR SALE, LEASE, OR FINANCING, OR WITHDRAWAL WITHOUT NOTICE. ANY PROJECTIONS, OPINIONS, ASSUMPTIONS, OR ESTIMATES USED ARE FOR ILLUSTRATIVE PURPOSES ONLY AND DO NOT REPRESENT CURRENT OR FUTURE PERFORMANCE OF THE PROPERTY. NO WARRANTIES OR REPRESENTATIONS ARE MADE AS TO THE CONDITION OF THE PROPERTY OR THE PRESENCE OF ANY ENVIRONMENTAL HAZARDS, AND NONE ARE TO BE IMPLIED.