

FOR LEASE

**11313 Smith Drive
Huntley, IL**

PLOTE PROPERTIES

Adam Neisendorf
(847) 428-1000 ext. 228
aneisendorf@ploteproperties.com



- Lot Size:** 1.71 acres
- SQFT:** 15,125 Total SQFT, inclusive of approximately 4,000 SQFT office area
- Rental Rate:** \$9.95 NNN
- Zoning:** M – Manufacturing Zoning District (Light Industrial)
- Power:** 400 AMPS of 3-phase power, inclusive of 120/208V and 277/480V
- Features:** Steel and Masonry Construction
Security Alarm System
Fire Alarm and Fire Sprinkler
Fenced Outdoor Storage Area 65' x 85'
STAND-ALONE BUILDING WITH LARGE, PAVED PARKING LOT
- Loading:** 2 Loading Docks with Dock Levelers
2 Drive-in Doors 14' high
- Location:** Located on Smith Drive, directly off Kreuzer Road and Route 47
2.5 miles north from the full interchange at I-90 and IL - Route 47.

FOR LEASE

11313 Smith Drive
Huntley, IL


PLOTE PROPERTIES

Adam Neisendorf
(847) 428-1000 ext. 228
aneisendorf@ploteproperties.com



FOR LEASE

11313 Smith Drive
Huntley, IL


PLOTE PROPERTIES

Adam Neisendorf
(847) 428-1000 ext. 228
aneisendorf@ploteproperties.com

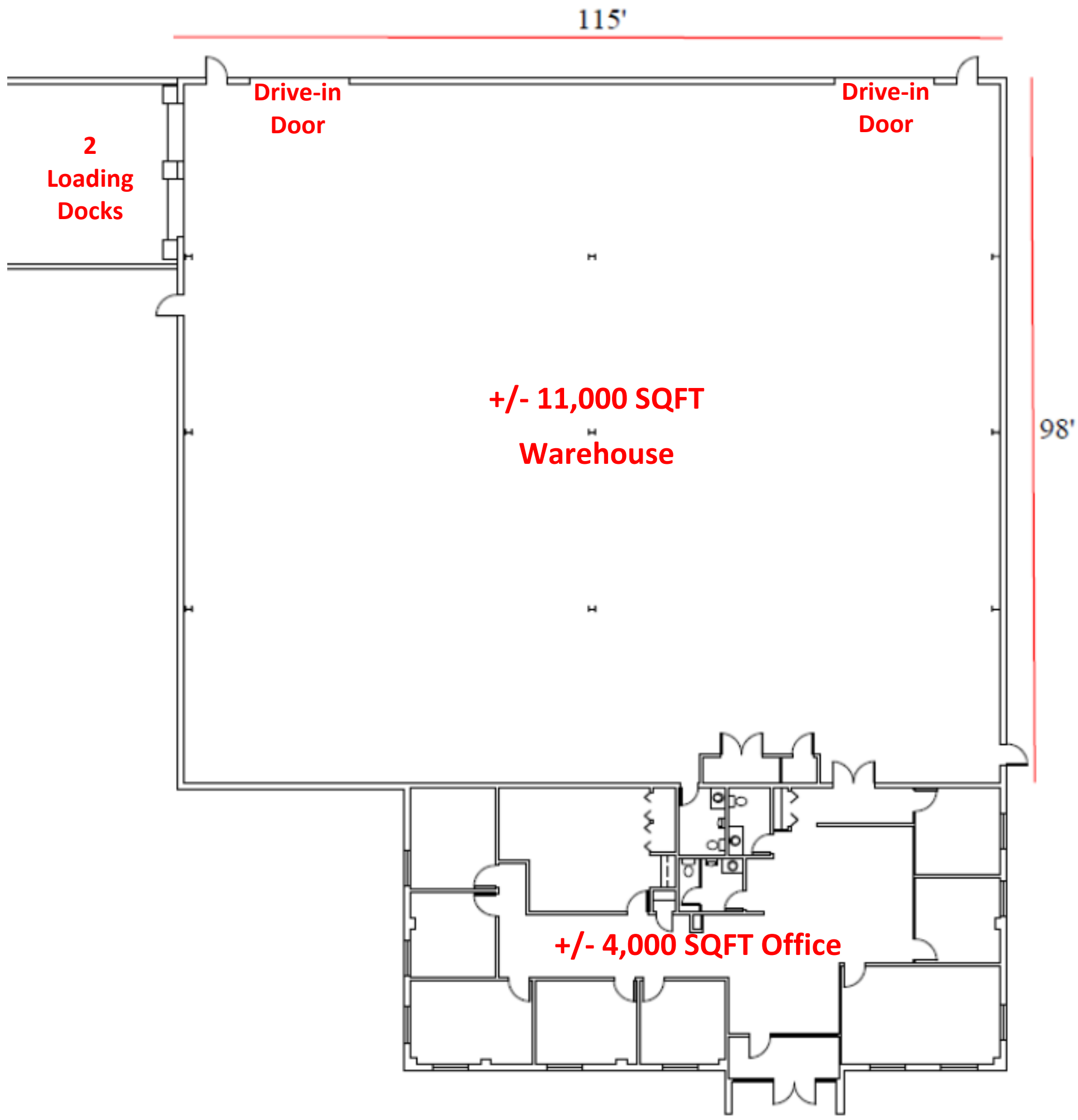


FOR LEASE

11313 Smith Drive
Huntley, IL



Adam Neisendorf
(847) 428-1000 ext. 228
aneisendorf@ploteproperties.com

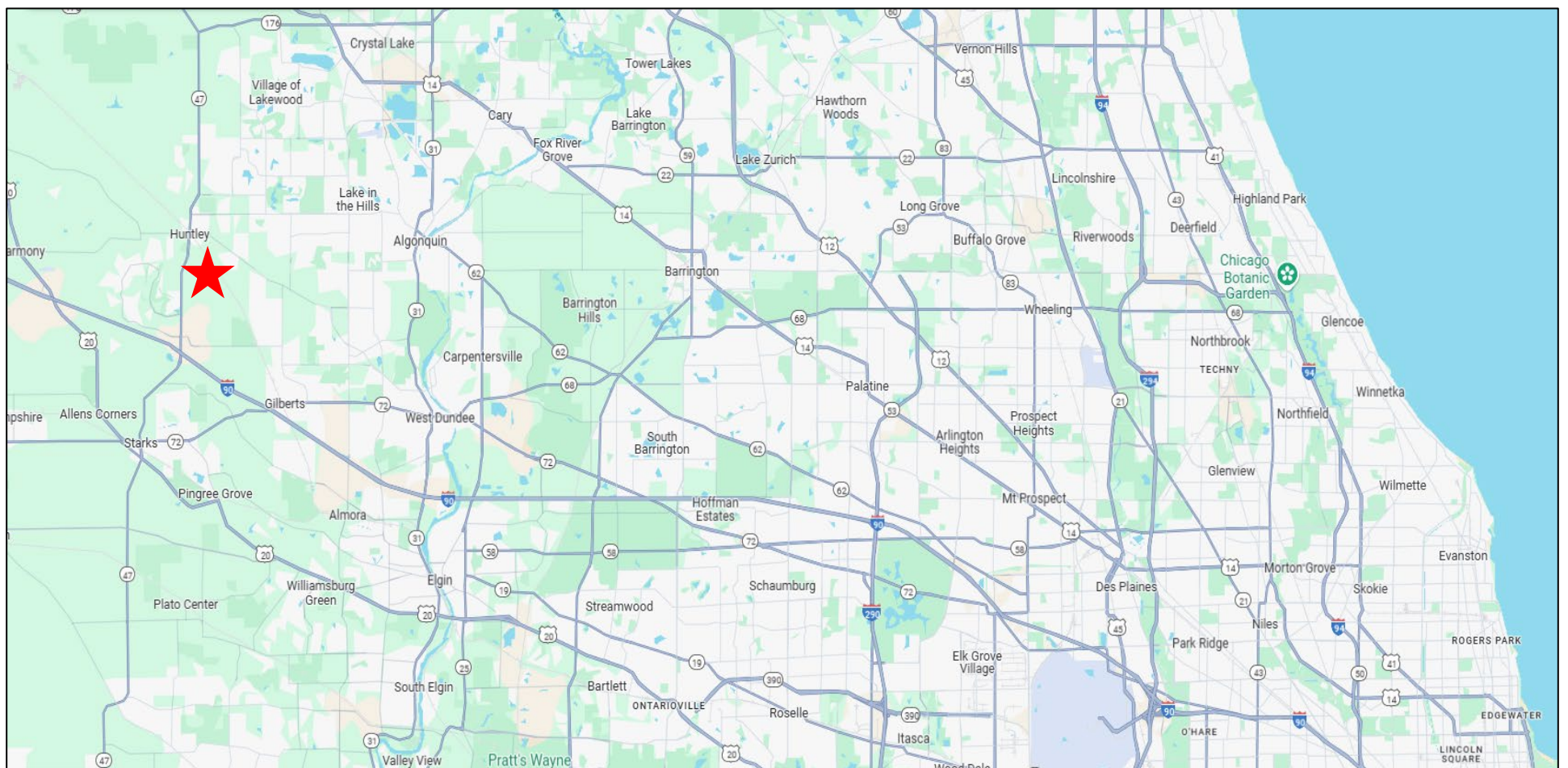
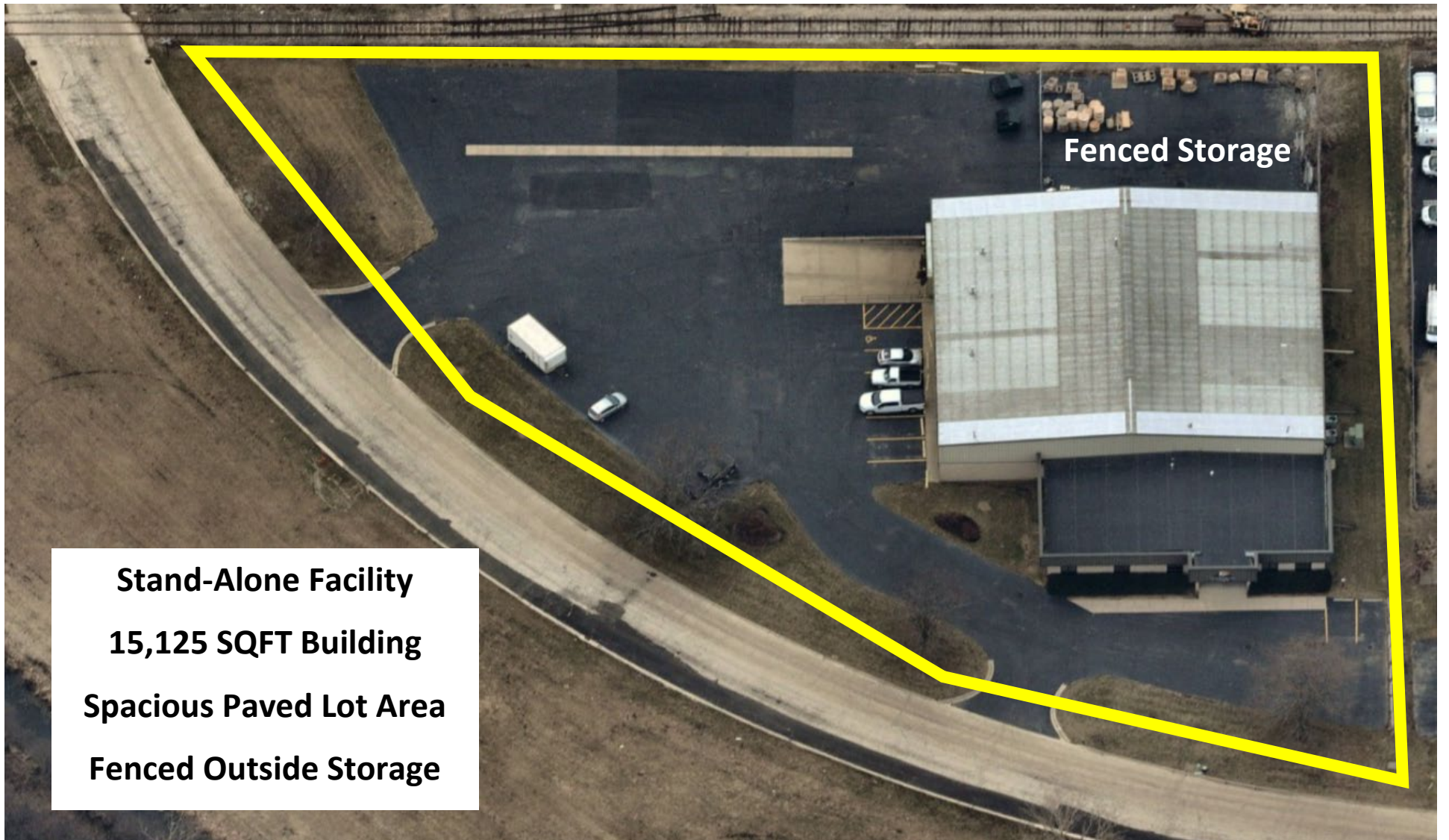


FOR LEASE

**11313 Smith Drive
Huntley, IL**

PLOTE PROPERTIES

**Adam Neisendorf
(847) 428-1000 ext. 228
aneisendorf@ploteproperties.com**



**For property information and to setup a showing,
please call Adam Neisendorf
(847) 428-1000 ext. 228**

Disclaimer: The information contained in this brochure has been obtained from sources believed to be reliable. While we do not doubt its accuracy, we have not verified it and make no guarantee, warranty, or representation about it. It is your responsibility to independently confirm its accuracy and completeness. All measurements, square footages, and information are approximate and for depiction purposes only. Prices are subject to change at owner's discretion.