

MERRYHILL PRESCHOOL

7335 PARK CITY DRIVE, SACRAMENTO, CA 95831

- » 215+ UNIT CORPORATE GUARANTOR
- » 15+ FEEDER ELEMENTARY SCHOOLS WITHIN A 5-MILE RADIUS
- » AHHI EXCEEDS \$130K WITHIN A 1-MILE RADIUS



OFFERING MEMORANDUM

Marcus & Millichap



The information in this package has been secured from sources we believe to be reliable, but we make no representations or warranties, expressed or implied, as to the accuracy of the information. References to square footage or age are approximate. Buyer must verify the information and bears all risk for any inaccuracies. Any projections, opinions, assumptions or estimates used herein are for example purposes only and do not represent the current or future performance of the property. Marcus & Millichap Real Estate Investment Services is a service mark of Marcus & Millichap Real Estate Investment Services, Inc. © 2026 Marcus Millichap



Executive Summary

7335 Park City Dr, Sacramento, CA 95831

FINANCIAL SUMMARY

Price	\$3,797,000
Cap Rate	7.0%
Building Size	11.448 SF
Net Cash Flow	7.0% \$265,766
Year Built	2002
Lot Size	1.41 Acres

LEASE SUMMARY

Lease Type	Absolute Triple-Net (NNN) Lease
Tenant	Nobel Learning Communities (Spring Education Group)
Guarantor	Corporate
Lease Commencement Date	March 21, 2000
Lease Expiration Date	June 30, 2027
Lease Term Remaining	1.5 Years
Rental Increases	Lesser of 5% or the Percentage Increase in CPI Every 2 Years
Renewal Options	2, 5 Year Options
Right of First Offer	N/A

Base Rent	\$265,766
Net Operating Income	\$265,766
Total Return	7.0% \$265,766





ACC GREENHAVEN TERRACE
±170 Assisted Living Units
95.3% Occupied

BROADLEAF APARTMENTS
±244 Units
94.7% Occupied

22,500 CPD
FLORIN RD



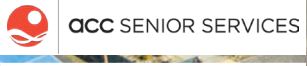
SACRAMENTO
EXECUTIVE AIRPORT



22,500 CPD
FLORIN RD

BROADLEAF APARTMENTS
±244 Units
94.7% Occupied

117,000 CPD
INTERSTATE 5



Property Description



INVESTMENT HIGHLIGHTS

- » **Absolute Triple-Net (NNN) Lease with Multiple Renewal Options and Rent Increases Occurring Every 2 Years**
- » Corporate Guaranty by Spring Education Group, a Multi-brand Education Network Composed of Over 215 Schools in 19 States
- » **Average Household Income Exceeds \$130,000 Within a 1-Mile Radius**
- » Densely-Populated Trade Area in Sacramento - 253,910 Residents within a 5-Mile Radius
- » **Easily Accessible Location Immediately Off the Interstate 5 (±117,000 Cars per Day), Providing a Direct Route to Downtown Sacramento**
- » Located within Sacramento's Pocket-Greenhaven Neighborhood, an Affluent Area with Waterfront Homes, Parks, Trails, and Excellent Schools



DEMOGRAPHICS

1-mile

3-miles

5-miles

Population

2030 Projection	18,793	99,701	256,890
2025 Estimate	18,634	98,882	253,910
Growth 2025 - 2030	0.85%	0.83%	1.17%

Households

2030 Projections	7,995	38,000	92,456
2025 Estimate	7,891	37,614	91,075
Growth 2025 - 2030	1.31%	1.03%	1.52%

Income

2025 Est. Average Household Income	\$130,379	\$111,433	\$104,498
2025 Est. Median Household Income	\$106,026	\$92,261	\$86,130

Tenant Overview



**Merryhill
School**



CAMPBELL, CALIFORNIA
Headquarters



1949
Founded



±28
Locations

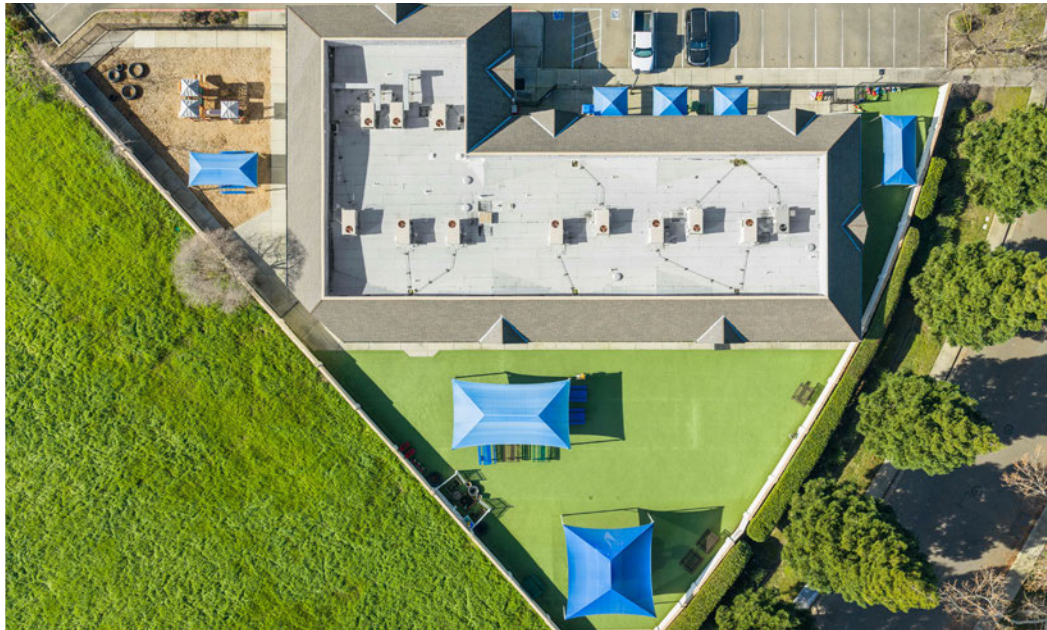


MERRYHILLSCHOOL.COM
Website

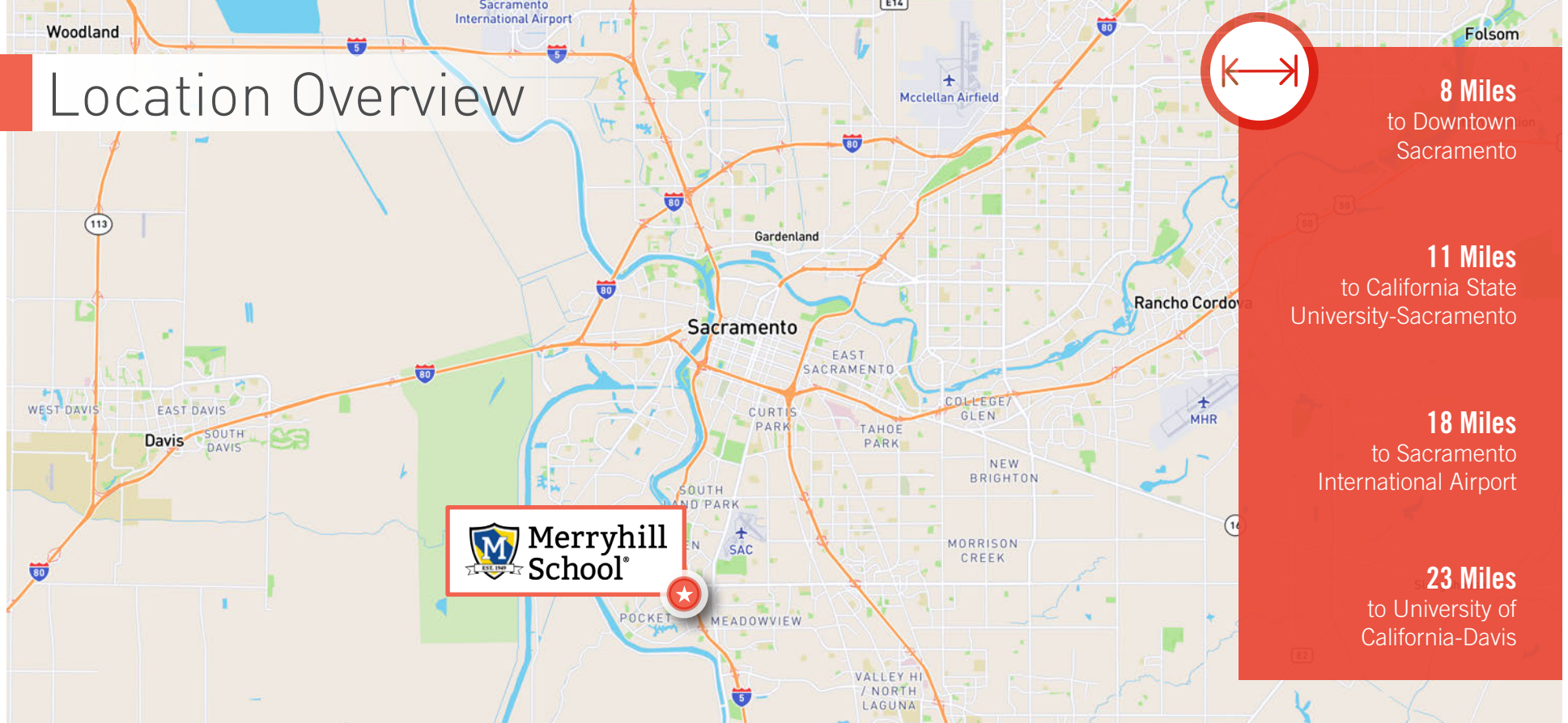
Merryhill School was founded in 1949 in downtown Sacramento, California. Today, Merryhill School has approximately 28 locations in California, Nevada, Colorado, and Texas. Its locations offer preschool, a private elementary and middle school, summer camp, and before- and after-school programs.

Merryhill School is part of Spring Education Group. Spring Education Group is a multi-brand education network of superior private school institutions spanning infant care through high school. The network (currently composed of approximately 215 schools) brings together some of the best private school programs in the country, with proven track records educating children through unique and carefully crafted curricula. Headquartered in Campbell, California, Spring Education Group's best-in-class platform was created by uniting four premier school organizations – Stratford School, LePort Montessori Schools, Nobel Learning Communities, and BASIS Independent Schools. The Spring Education Group network extends across 19 states in the U.S. with an international presence in Asia.

Property Photos



Location Overview



Sacramento is the capital city of California and the seat of Sacramento County, located at the confluence of the Sacramento River and the American River in the northern portion of California's expansive Central Valley. Sacramento is a cultural and recreational destination, with an orchestra, professional opera and ballet companies, numerous performing arts venues, a lively museum community, professional sports, and endless opportunities for sporting and recreation activities. It is a growing metropolitan region with the seventh-largest world economy.

The Sacramento-Roseville-Arden-Arcade metro is a hub of public and private sector activity. The city of Sacramento is the most populous, at approximately 510,000 residents. Two major universities foster an educated workforce that draws new companies to the market. New job opportunities, in turn, foster population

growth as more households seek residential options in less dense areas. Lying in the middle of the 450-mile-long Central Valley, the metro is comprised of four counties: Sacramento, El Dorado, Placer, and Yolo. More than 2.4 million people call the area home, and unlike the Bay Area, Sacramento is seismically quiet, making it an ideal location for data centers and cloud computing storage. Lower costs relative to the Bay Area attract businesses and have driven job creation in recent years.

Over the next five years, the Sacramento metro is expected to add nearly 80,000 people, resulting in the formation of roughly 32,000 households. By 2028, the metro's population is projected to increase by 3.3% and households are projected to increase by 3.6%. Placer County overall is one of the fastest-growing areas in the state, contributing to robust long-term local housing demand.

[exclusively listed by]

Spencer Berkley

Director

602 687 6836

spencer.berkley@marcusmillichap.com

Chris N. Lind

Senior Managing Director

602 687 6780

chris.lind@marcusmillichap.com

Mark J. Ruble

Executive Managing Director

602 687 6766

mruble@marcusmillichap.com

Zack House

Senior Managing Director Investments

602 687 6650

zhouse@marcusmillichap.com

NET LEASED DISCLAIMER

Marcus & Millichap hereby advises all prospective purchasers of Net Leased property as follows:

By accepting this Marketing Brochure, you agree to treat the information contained herein regarding the lease terms as confidential and proprietary and to only use such information to evaluate a potential purchase of this net leased property.

The information contained in this Marketing Brochure has been obtained from sources we believe to be reliable. However, Marcus & Millichap has not and will not verify any of this information, nor has Marcus & Millichap conducted any investigation regarding these matters. Marcus & Millichap makes no guarantee, warranty or representation whatsoever about the accuracy or completeness of any information provided.

As the Buyer of a net leased property, it is the Buyer's responsibility to independently confirm the accuracy and completeness of all material information before completing any purchase. This Marketing Brochure is not a substitute for your thorough due diligence investigation of this investment opportunity. Marcus & Millichap expressly denies any obligation to conduct a due diligence examination of this Property for Buyer.

Any projections, opinions, assumptions or estimates used in this Marketing Brochure are for example only and do not represent the current or future performance of this property. The value of a net leased property to you depends on factors that should be evaluated by you and your tax, financial and legal advisors.

Buyer and Buyer's tax, financial, legal, and construction advisors should conduct a careful, independent investigation of any net leased property to determine to your satisfaction with the suitability of the property for your needs. Like all real estate investments, this investment carries significant risks. Buyer and Buyer's legal and financial advisors must request and carefully review all legal and financial documents related to the property and tenant. While the tenant's past performance at this or other locations is an important consideration, it is not a guarantee of future success. Similarly, the lease rate for some properties, including newly-constructed facilities or newly-acquired locations, may be set based on a tenant's projected sales with little or no record of actual performance, or comparable rents for the area. Returns are not guaranteed; the tenant and any guarantors may fail to pay the lease rent or property taxes, or may fail to comply with other material terms of the lease; cash flow may be interrupted in part or in whole due to market, economic, environmental or other conditions. Regardless of tenant history and lease guarantees, Buyer is responsible for conducting his her own

investigation of all matters affecting the intrinsic value of the property and the value of any long-term lease, including the likelihood of locating a replacement tenant if the current tenant should default or abandon the property, and the lease terms that Buyer may be able to negotiate with a potential replacement tenant considering the location of the property, and Buyer's legal ability to make alternate use of the property.

CONFIDENTIALITY AGREEMENT

The information contained in the following offering memorandum is proprietary and strictly confidential. It is intended to be reviewed only by the party receiving it from Marcus & Millichap and it should not be made available to any other person or entity without the written consent of Marcus & Millichap. By taking possession of and reviewing the information contained herein the recipient agrees to hold and treat all such information in the strictest confidence. The recipient further agrees that recipient will not photocopy or duplicate any part of the offering memorandum. If you have no interest in the subject property at this time, please return this offering memorandum to Marcus & Millichap.

This offering memorandum has been prepared to provide summary, unverified financial and physical information to prospective purchasers, and to establish only a preliminary level of interest in the subject property. The information contained herein is not a substitute for a thorough due diligence investigation. Marcus & Millichap has not made any investigation, and makes no warranty or representation with respect to the income or expenses for the subject property, the future projected financial performance of the property, the size and square footage of the property and improvements, the presence or absence of contaminating substances, PCBs or asbestos, the compliance with local, state and federal regulations, the physical condition of the improvements thereon, or the financial condition or business prospects of any tenant, or any tenant's plans or intentions to continue its occupancy of the subject property. The information contained in this offering memorandum has been obtained from sources we believe to be reliable; however, Marcus & Millichap has not verified, and will not verify, any of the information contained herein, nor has Marcus & Millichap conducted any investigation regarding these matters and makes no warranty or representation whatsoever regarding the accuracy or completeness of the information provided. All potential buyers must take appropriate measures to verify all of the information set forth herein. Prospective buyers shall be responsible for their costs and expenses of investigating the subject property.

ALL PROPERTY SHOWINGS ARE BY APPOINTMENT ONLY. PLEASE CONTACT THE MARCUS & MILLICHAP AGENT FOR MORE DETAILS..

For financing options, please reach out to:

JOSH SCIOTTO

602-687-6647

josh.sciotto@marcusmillichap.com

Marcus & Millichap
Capital Corporation

Tony Solomon

Broker of Record

License # 01238010

23975 Park Sorrento, Suite 400

Calabasas, CA 91302

Marcus & Millichap

Offices Nationwide

www.marcusmillichap.com