



Flex Space For Lease

3330 South Hydraulic Avenue

Property Highlights

- Available Space: 2,500 SF
- Overhead Garage Doors: 12' x 12'
- Spaces Include Office With HVAC
- LED Lighting
- Ceiling Height: 12' - 14'
- Year Built: 2020
- Zoning: Limited Industrial
- Lease Rate: \$1,900/mo, Industrial Gross

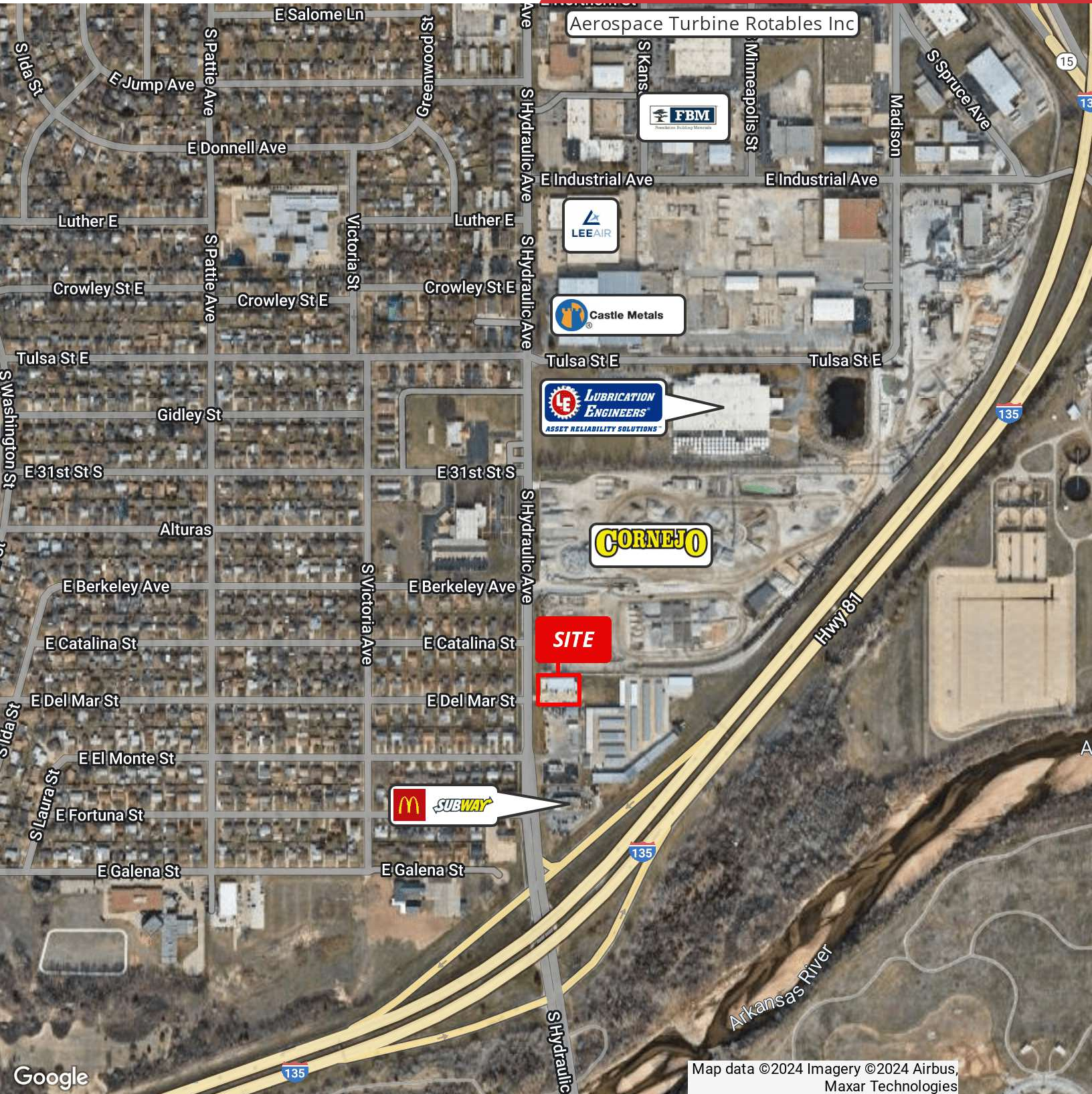


For More Information

Ryan Hubbard

O: 316 613 2448

rhubbard@naimartens.com



Google

Map data ©2024 Imagery ©2024 Airbus, Maxar Technologies

Independently Owned and Operated. The information contained herein was obtained from sources believed reliable; however, NAI Martens Company makes no guarantees, warranties or representations as to the completeness or accuracy thereof. The presentation of this property is submitted subject to errors, omissions, change of price or conditions prior to sale or lease, or withdrawal without notice.

1330 E. Douglas Ave.
Wichita, KS 67214
316 262 0000 tel
naimartens.com