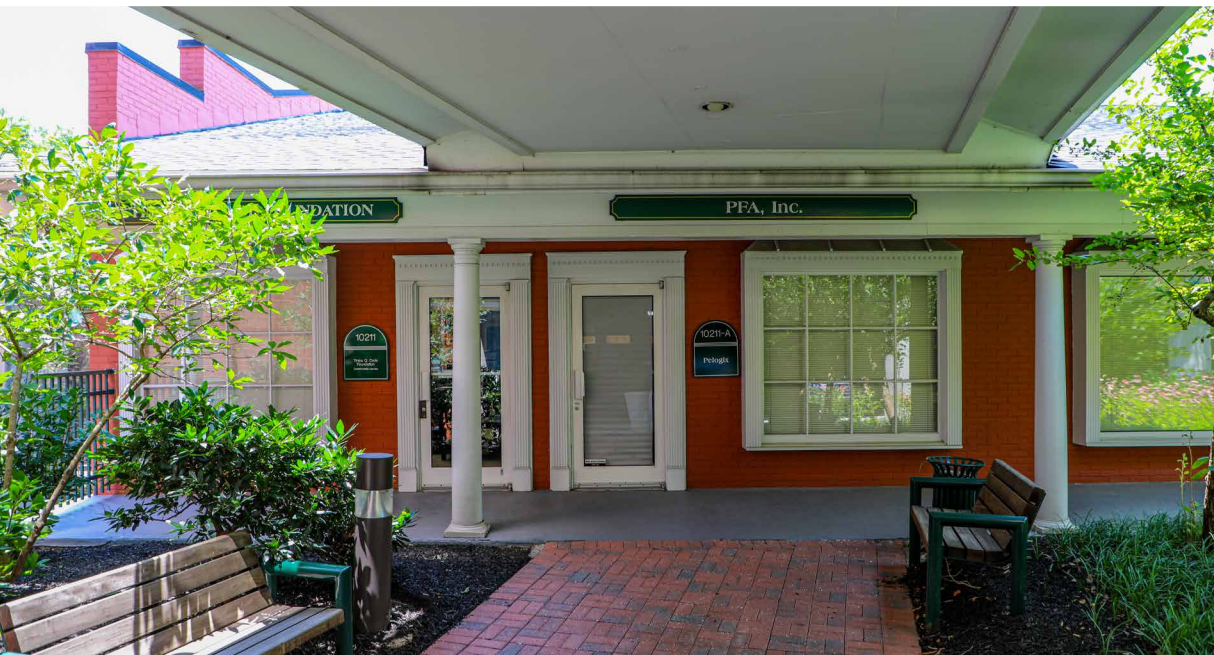


# FOR LEASE

 BALTIMORE COUNTY, MD

# SOUTH DOLFIELD

10211 - 10219 SOUTH DOLFIELD ROAD, OWINGS MILLS, MD 21117



## PROPERTY HIGHLIGHTS:

- ▶ GARAGE AND SURFACE PARKING AVAILABLE
- ▶ SEPARATELY/INDIVIDUALLY MAINTAINED HVAC UNITS
- ▶ PROPERTY MANAGEMENT ON-SITE
- ▶ WALKABLE DISTANCE TO FOUNDRY ROW AND METRO CENTRE
- ▶ CONVENIENT ACCESS TO I-795 AND REISTERSTOWN ROAD

 **DAVID S. BROWN**  
ENTERPRISES, LTD.

**KEVIN KEANE | SVP, OFFICE LEASING**  
📞 410.581.2519 ✉️ KEVIN@DAVIDSBROWN.COM

**BRENT MANGUM | VP, OFFICE LEASING**  
📞 410.581.2518 ✉️ BRENT@DAVIDSBROWN.COM

**NOAH ADLER | LEASING ASSOCIATE**  
📞 410.581.2510 ✉️ NADLER@DAVIDSBROWN.COM

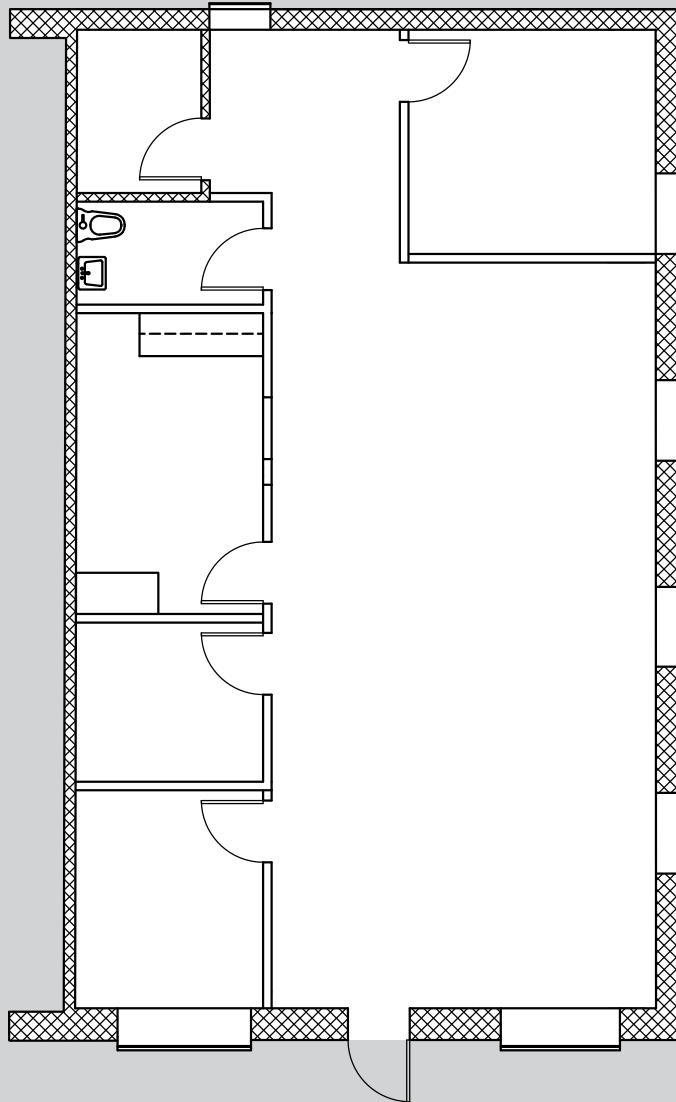
DAVID S. BROWN ENTERPRISES | 100 PAINTERS MILL ROAD, OWINGS MILLS, MD 21117 | 410.581.2520 | WWW.DAVIDSBROWN.COM |   

# FOR LEASE

**B** BALTIMORE COUNTY, MD

## SOUTH DOLFIELD

10211 - 10219 SOUTH DOLFIELD ROAD, OWINGS MILLS, MD 21117



AVAILABLE

► SUITE 10219 - 1,502 SF

**DAVID S. BROWN**  
ENTERPRISES, LTD.

**KEVIN KEANE | SVP, OFFICE LEASING**  
410.581.2519 | KEVIN@DAVIDSBROWN.COM

**BRENT MANGUM | VP, OFFICE LEASING**  
410.581.2518 | BRENT@DAVIDSBROWN.COM

**NOAH ADLER | LEASING ASSOCIATE**  
410.581.2510 | NADLER@DAVIDSBROWN.COM

DAVID S. BROWN ENTERPRISES | 100 PAINTERS MILL ROAD, OWINGS MILLS, MD 21117 | 410.581.2520 | WWW.DAVIDSBROWN.COM |    



# SOUTH DOLFIELD

10211 - 10219 SOUTH DOLFIELD ROAD, OWINGS MILLS, MD 21117

## MAP

