



FOR LEASE



333 NW 3RD AVENUE

Office / Clinic Space

± 1,422 SF | \$25/SF MG

333 NW 3rd Ave, Canby, OR 97013

- Features 5 Private Offices/ Exams Rooms
- Ideal for a Dental or Medical Practice
- Previously the Dental Offices of Richard Sale, DMD
- Video Tour: [Click Here](#)

JEFF FALCONER, SIOR

Principal Broker | Licensed in OR

503-307-3075 | jeff@capacitycommercial.com

KYLIE CULVER

Associate Broker | Licensed in OR

503-826-2020 | kylie@capacitycommercial.com



PROPERTY SUMMARY



**FOR
LEASE**

PROPERTY DETAILS

Address	333 NW 3rd Ave, Canby, OR 97013
Available Space	1,422 SF
Space Features	<ul style="list-style-type: none">• 5 Private Offices / Exam Rooms• 1 Manager/ Accounting Office• Reception And Waiting Area• Storage/Break Room• 1 Restroom
Lease Rate	\$25/SF MG
Use Type	Office / Medical / Dental
Availability	Immediately
Space Condition	2nd Gen Medical / Office
Video Tour	Click Here

Location Features

- Situated in downtown Canby, just steps from other medical and services
- In the Heart of Canby Medical
- Located in a highly visible and accessible area with ample parking
- In close proximity to Highway 99-E and I-5

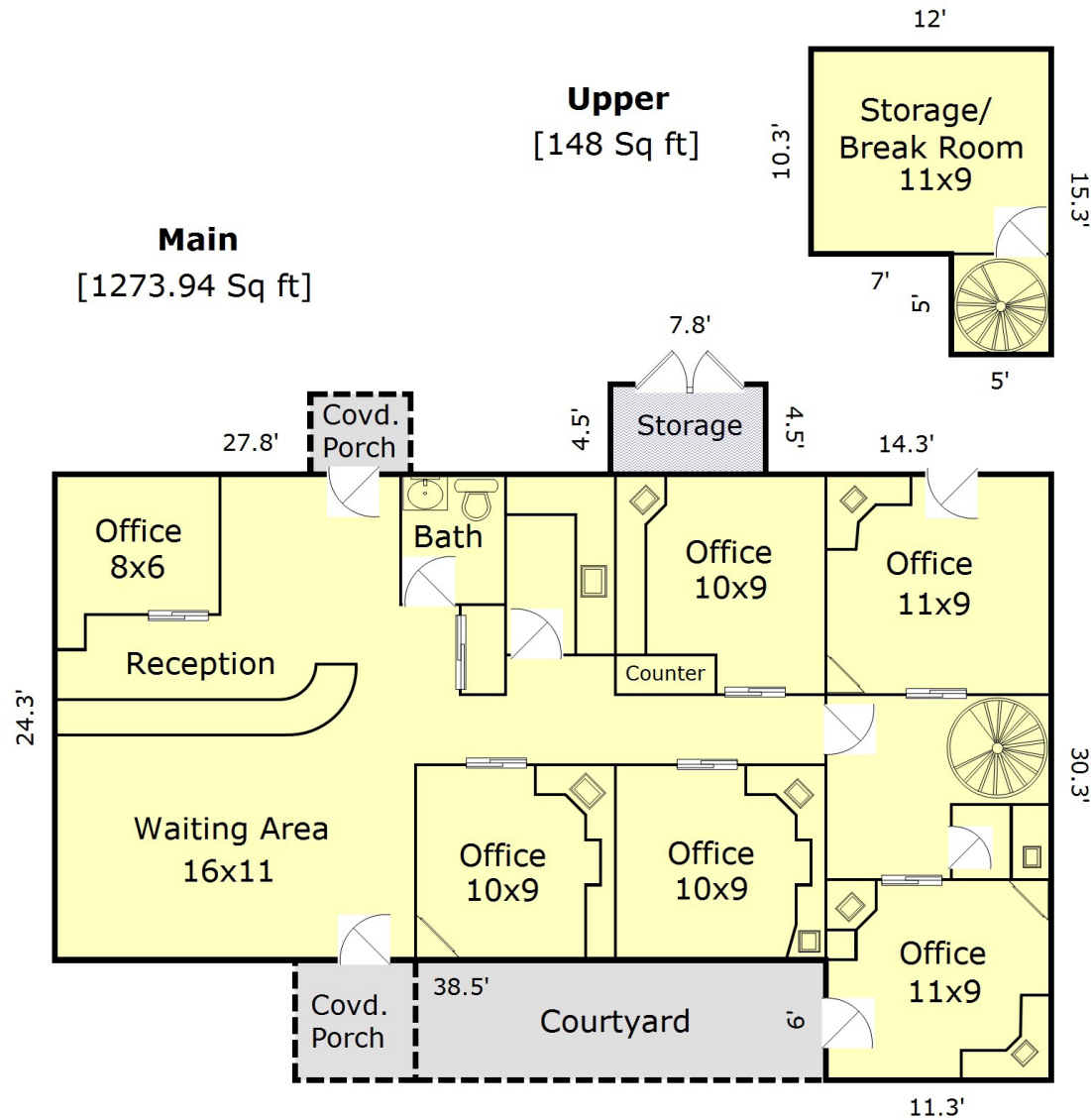
Nearby Highlights

- Backstop Bar and Grill
- Bee's Cafe
- CONES
- Chipotle
- Gwynn's Willamette Coffee House
- Lone Elder Pizza
- Wait Park
- Los Dos Agaves
- Mike's Place
- Oregon City Brewing
- Food Carts
- Thai Dish Cuisine
- Ebner's Meats and Deli
- The Human Bean



FLOOR PLAN

FLOOR PLAN



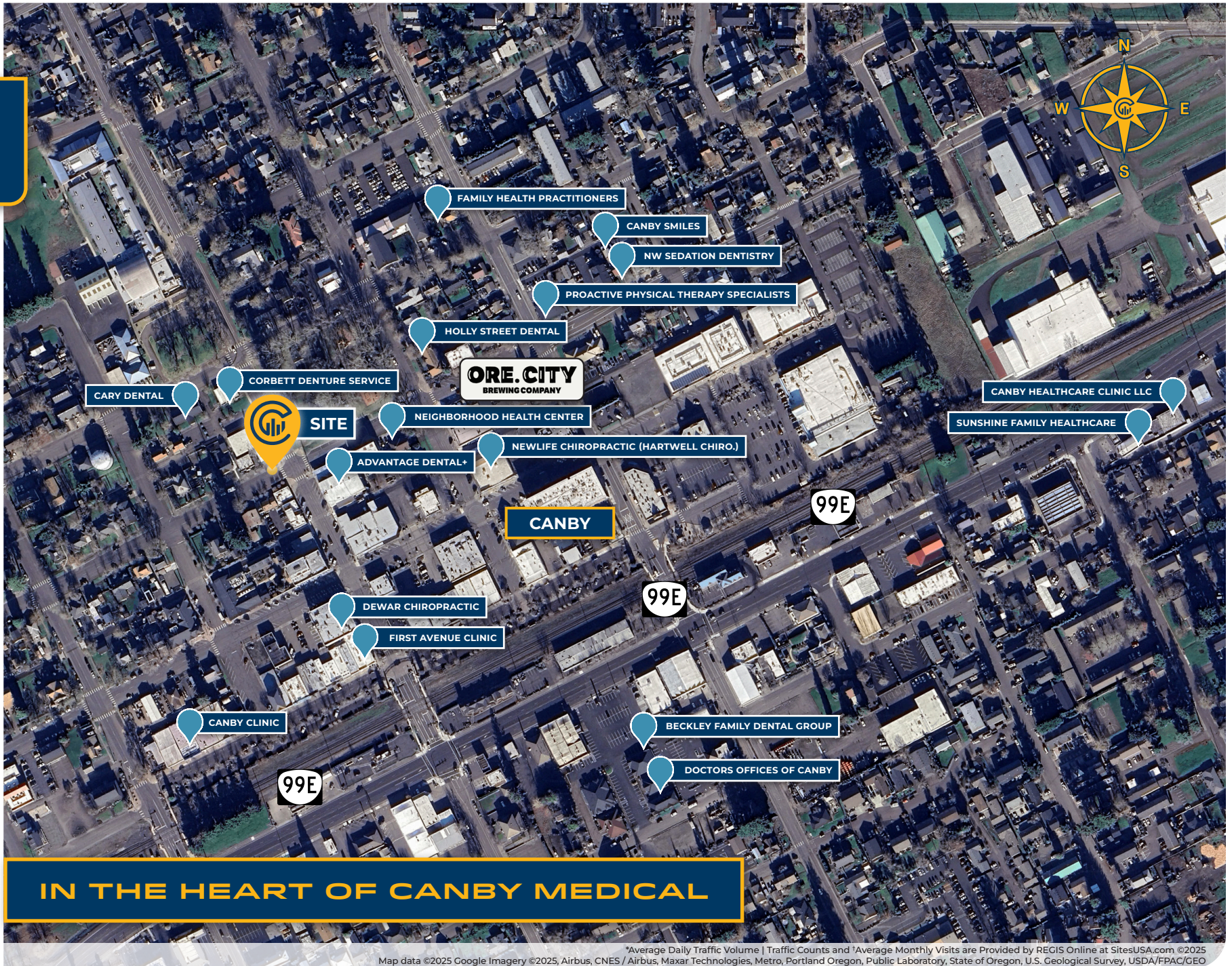


PHOTOS





LOCAL AERIAL MAP

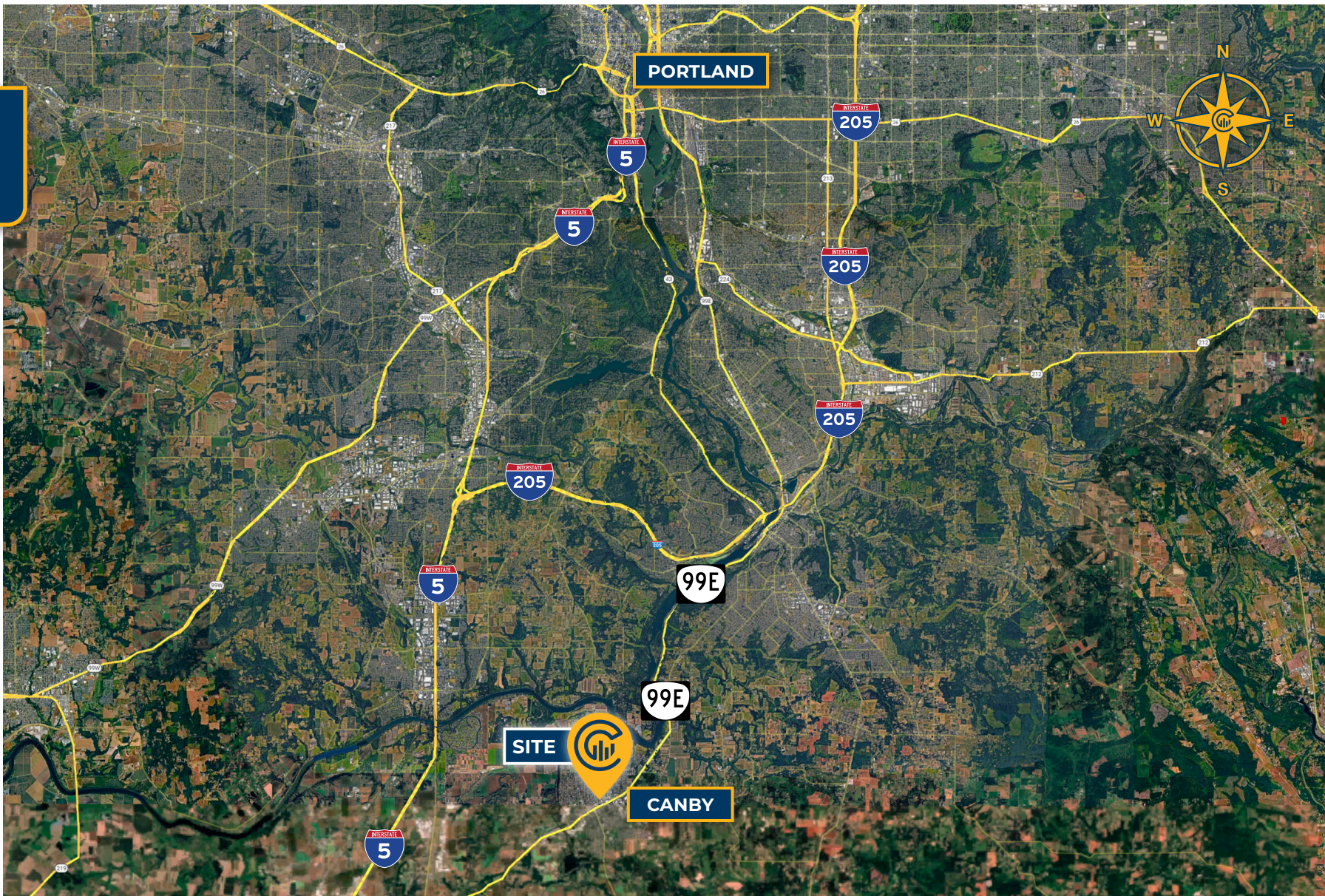


IN THE HEART OF CANBY MEDICAL

*Average Daily Traffic Volume | Traffic Counts and *Average Monthly Visits are Provided by REGIS Online at SitesUSA.com. ©2025
Map data ©2025 Google Imagery ©2025, Airbus, CNES / Airbus, Maxar Technologies, Metro, Portland Oregon, Public Laboratory, State of Oregon, U.S. Geological Survey, USDA/FPAC/GEO



LOCAL AERIAL MAP



*Average Daily Traffic Volume | Traffic Counts are Provided by REGIS Online at SitesUSA.com ©2025 | Map data ©2024 Google Imagery ©2025, Airbus, CNES / Airbus, Maxar Technologies, Metro, Portland Oregon, Public Laboratory, State of Oregon, U.S. Geological Survey, USDA/FPAC/GEO



JEFF FALCONER, SIOR
Principal Broker | Licensed in OR
503-307-3075
jeff@capacitycommercial.com

KYLIE CULVER
Associate Broker | Licensed in OR
503-826-2020
kylie@capacitycommercial.com