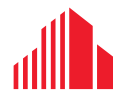




FOR LEASE 8,400 SF

724 THIMBLE SHOALS BLVD.

NEWPORT NEWS



**CUSHMAN &
WAKEFIELD**

THALHIMER

724 THIMBLE SHOALS BLVD. NEWPORT NEWS

Property Features

The Premises was purpose built for Leidos in 2019 with all new mechanical systems and upgraded finishes throughout. Easy to find location at the signalized intersection of Canon Boulevard and Thimble Shoals Boulevard. Within walking distance to City Center Oyster Point offering dining, retail, entertainment, and hotels.

Space Available: 8,400 SF

Lease Rate: \$18.00/SF net of janitorial

Zoning: C-4

Signage: Prominent exterior building signage and visibility

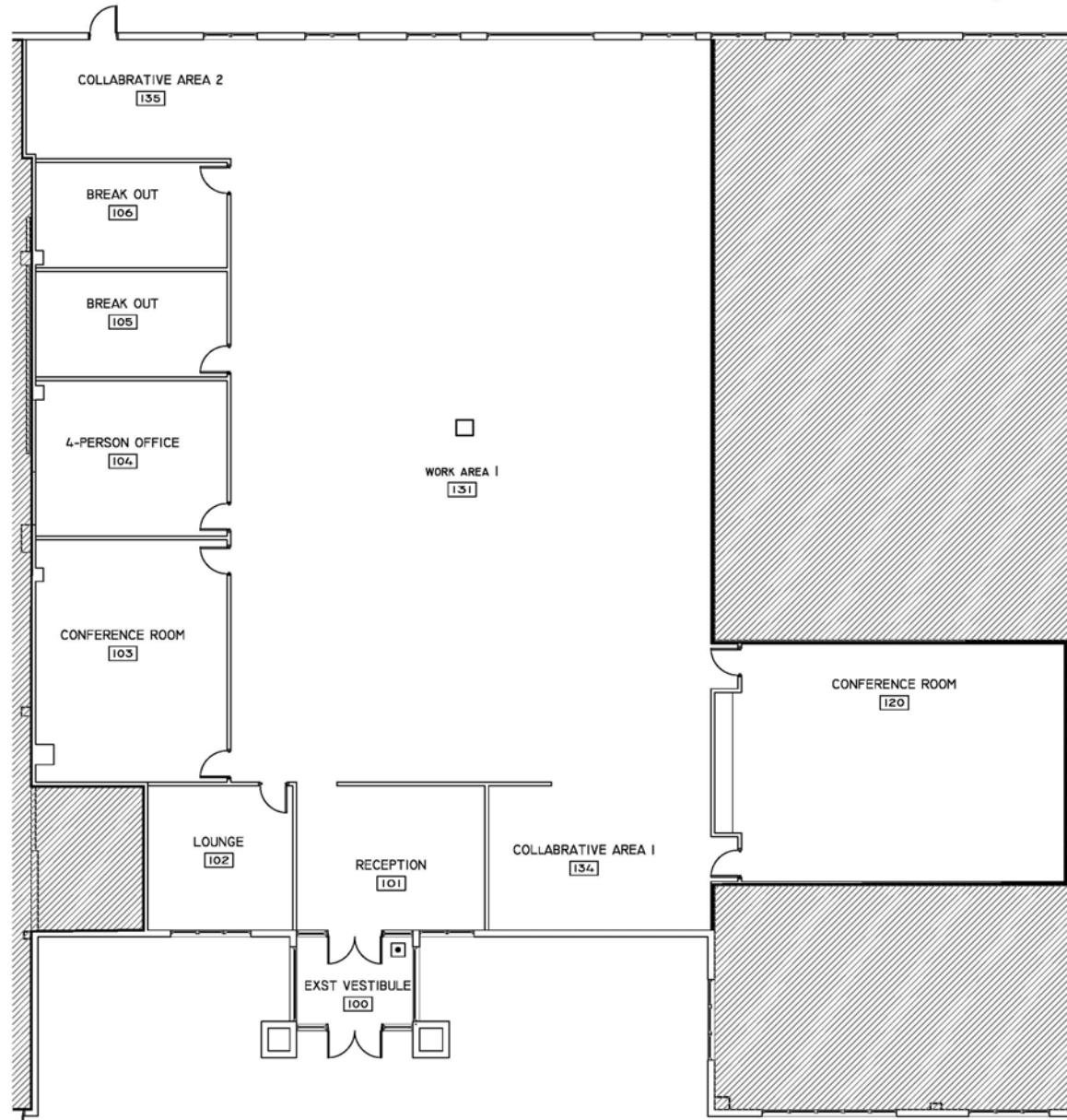
Parking: 154 surface level parking spaces

Co-Tenant: Howard Hanna Real Estate

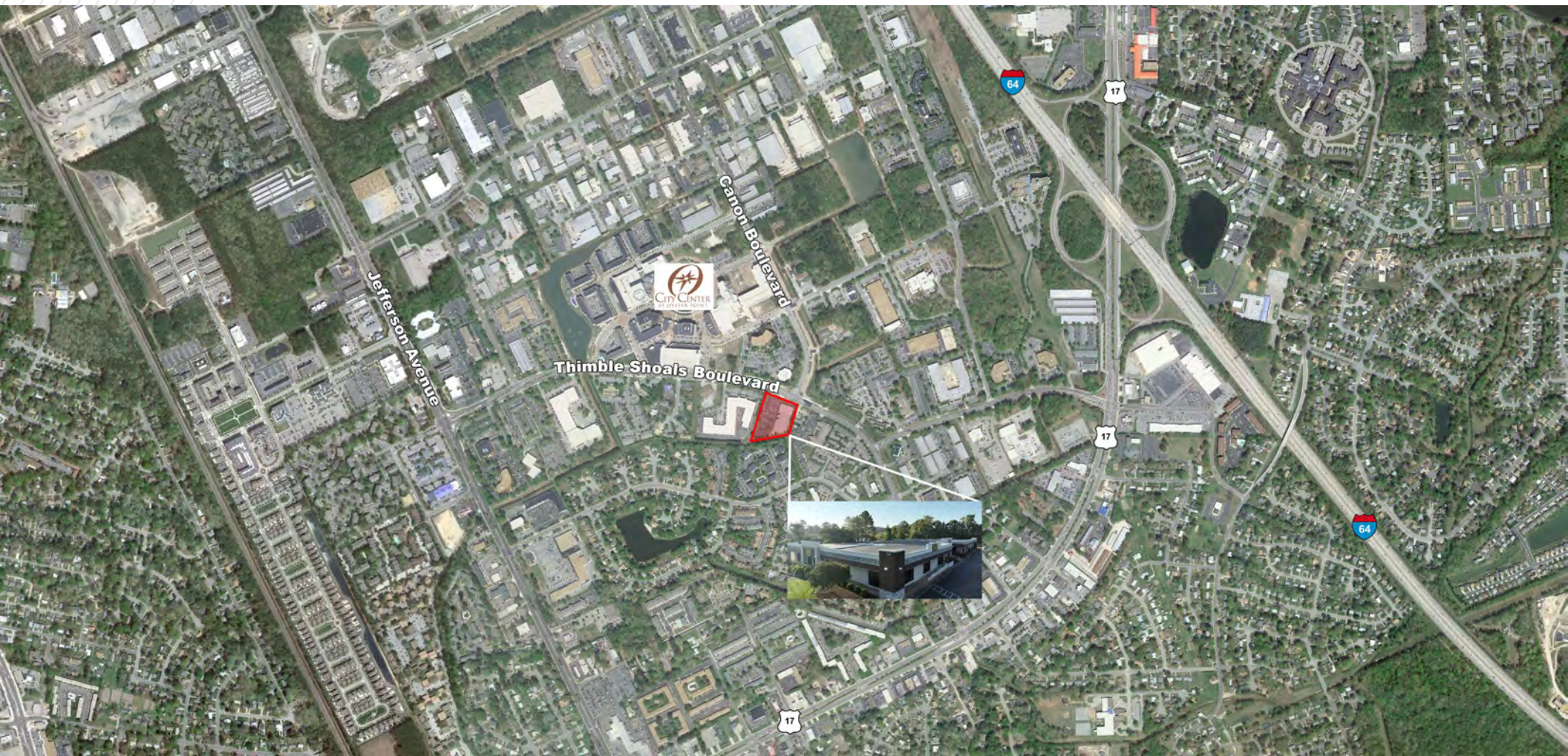


724 THIMBLE SHOALS BLVD.

NEWPORT NEWS

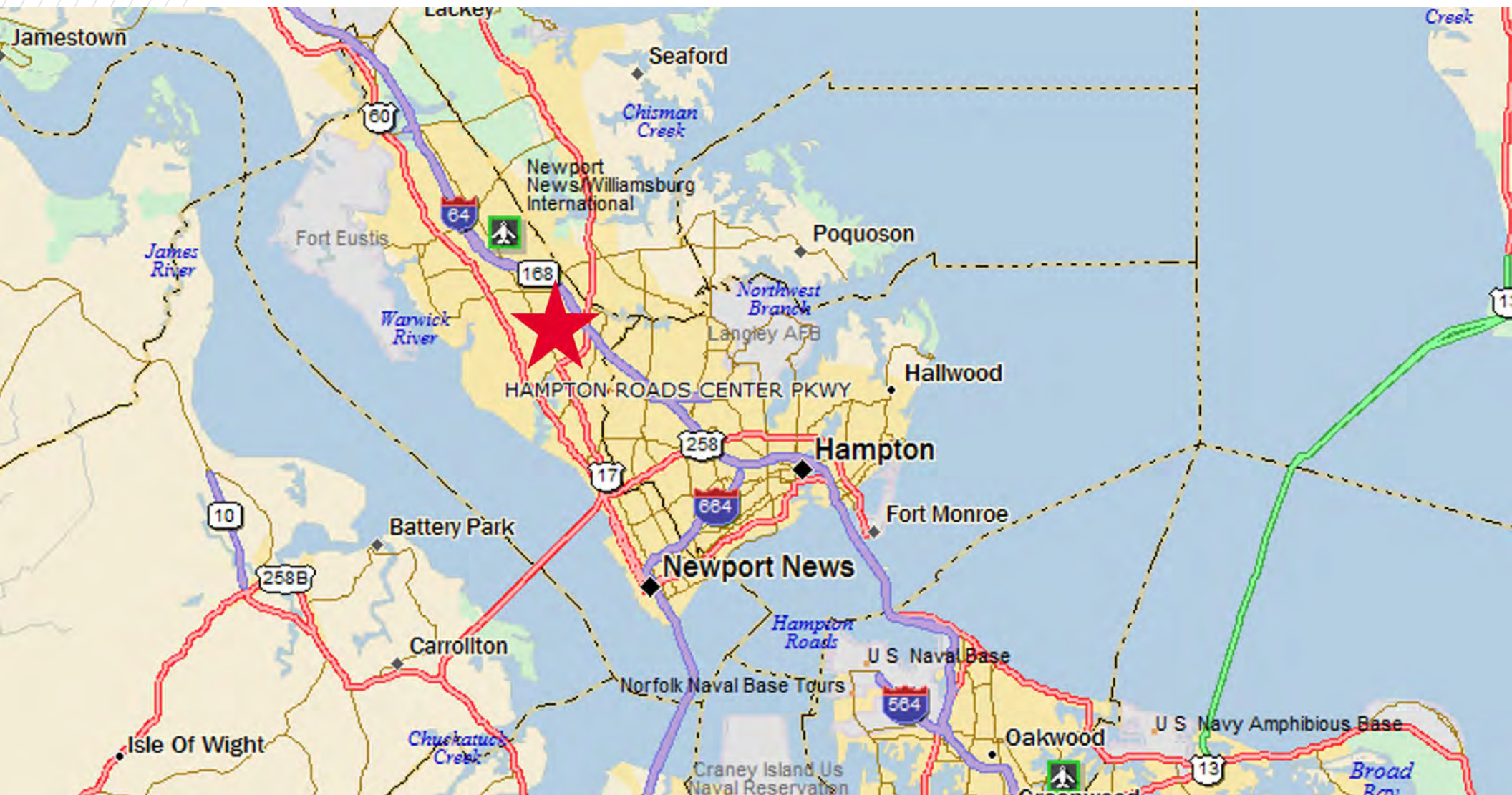


724 THIMBLE SHOALS BLVD. NEWPORT NEWS



724 THIMBLE SHOALS BLVD.

NEWPORT NEWS





FOR MORE INFORMATION, CONTACT:

ANDY DALLAS, CCIM, SIOR
Senior Vice President
757 873 3661
andy.dallas@thalhimer.com

TERESA NETTLES
Senior Vice President
757 873 9268
teresa.nettles@thalhimer.com

One BayPort Way
Suite 100
Newport News VA 23606
thalhimer.com

Independently Owned and Operated / A Member of the Cushman & Wakefield Alliance

Cushman & Wakefield | Thalhimer © 2025. No warranty or representation, express or implied, is made to the accuracy or completeness of the information contained herein, and same is submitted subject to errors, omissions, change of price, rental or other conditions, withdrawal without notice, and to any special listing conditions imposed by the property owner(s). As applicable, we make no representation as to the condition of the property (or properties) in question.



**CUSHMAN &
WAKEFIELD**

THALHIMER