

PROPERTY OVERVIEW

- ±41.91 Acres
- Portion of PIN#: 1758928330
- Zoning: R-1
- Property is on the southern side of The Point Development (developed by Ashton Woods)
- The Point is a ±264 acre development with 807 planned units, 324 townhomes and 483 houses
- Sewer is on the property
- Excellent site for residential development
- Rolesville is studying a new UDO and this site may fall under the new UDO guidelines
- Sale price: \$47,500/acre

DEMOGRAPHICS

	1 MILE	3 MILES	5 MILES
Total Population	3,241	25,518	83,813
Daytime Population	2,172	18,202	59,478
Average HH Income	\$121,604	\$146,768	\$143,911
Median Age	38.3	39.2	38.2
Median Home Value	\$465,292	\$490,577	\$460,974

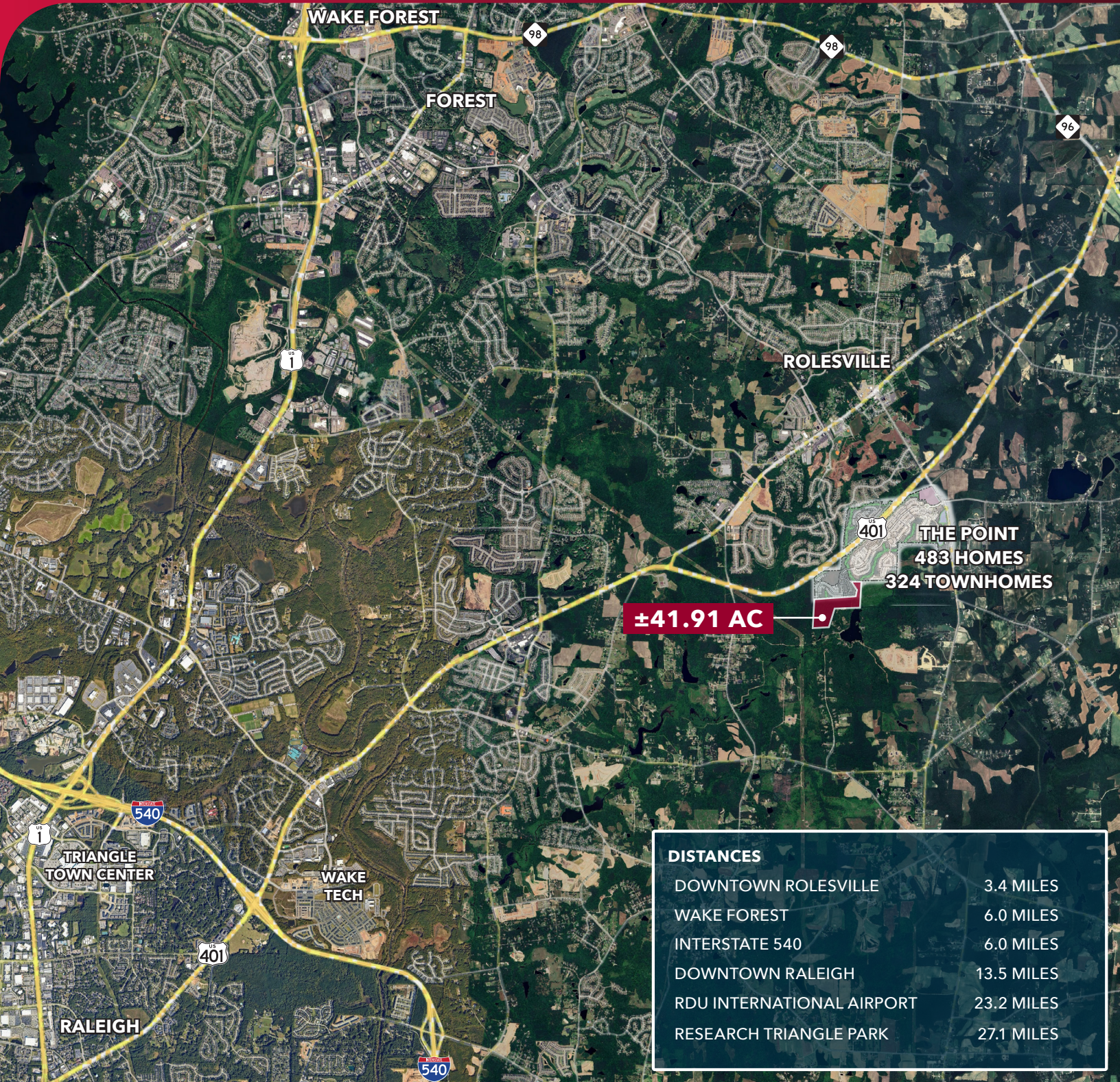
Source: ESRI 2024

Scott Hadley
shadley@lee-associates.com
D 919.576.2504
O 919.906.0524

LEE & ASSOCIATES
COMMERCIAL REAL ESTATE SERVICES

0 LOUISBURG ROAD
ROLESVILLE, NC 27571

LAND FOR SALE



±41.91 AC

THE POINT
483 HOMES
324 TOWNHOMES

DISTANCES	
DOWNTOWN ROLESVILLE	3.4 MILES
WAKE FOREST	6.0 MILES
INTERSTATE 540	6.0 MILES
DOWNTOWN RALEIGH	13.5 MILES
RDU INTERNATIONAL AIRPORT	23.2 MILES
RESEARCH TRIANGLE PARK	27.1 MILES

Scott Hadley
shadley@lee-associates.com
D 919.576.2504
O 919.906.0524

LEE & ASSOCIATES
COMMERCIAL REAL ESTATE SERVICES

All information furnished regarding property for sale, rental or financing is from sources deemed reliable, but no warranty or representation is made to the accuracy thereof and same is submitted to errors, omissions, change of price, rental or other conditions prior to sale, lease or financing or withdrawal without notice. No liability of any kind is to be imposed on the broker herein.