

5237 ALBEMARLE ROAD, CHARLOTTE, NC 28212

ALBEMARLE AT SHARON



LJ Kleger | (704) 765-4620 | lj@onealliancecompanies.com

ABOUT THE PROPERTY

RETAIL & OFFICE SPACE FOR LEASE

- Highly visible center located off of Albemarle Road and N Sharon Amity Road
- Conveniently located near restaurants and shopping
- Ample parking
- Road signage, great visibility, and a great tenant mix
- Below market lease rates
- 37,000 average daily traffic count
- Professionally managed by One Alliance Companies



ALBEMARLE AT SHARON



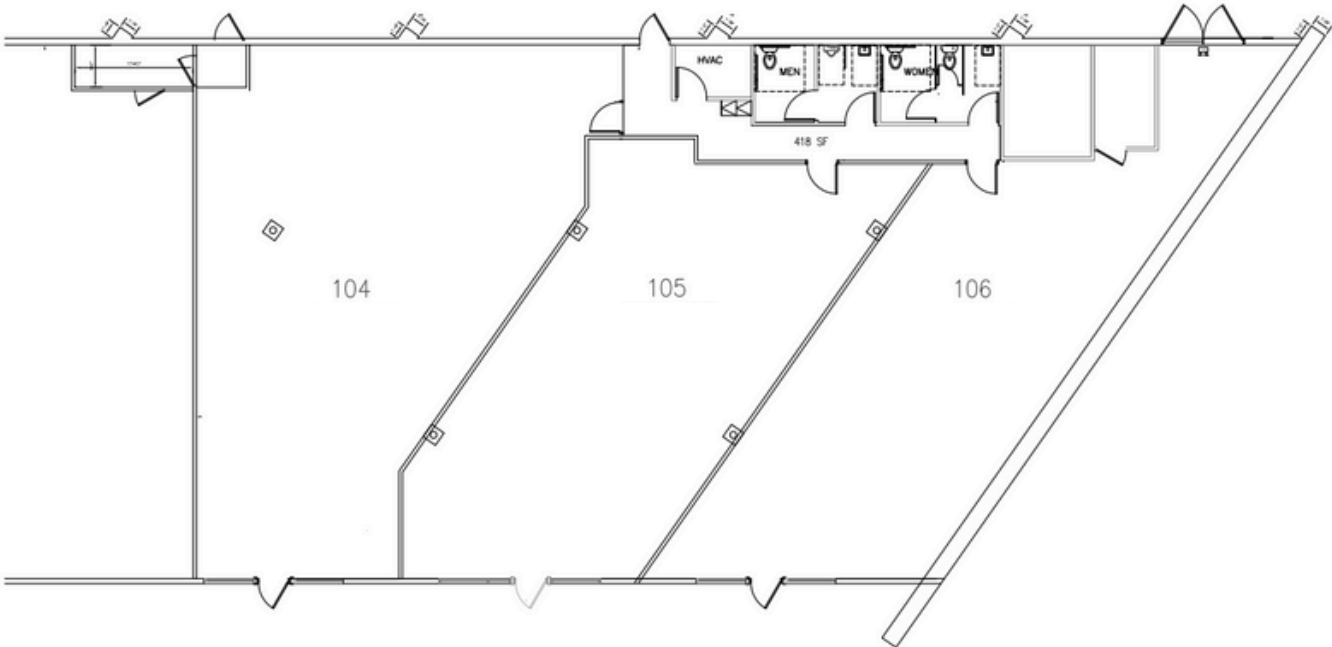
THE DETAILS

Location	5237 Albemarle Road, Charlotte, NC
County	Mecklenburg
Building SF	26,682
Parking Spaces	60

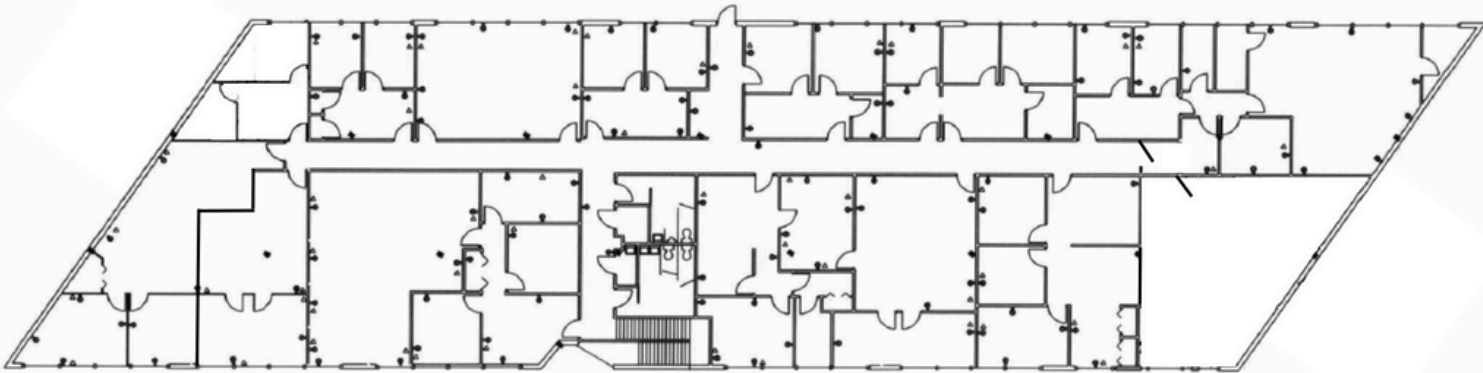
AVAILABLE SPACE

Suite 104	+/- 1,700 SF	1 st Floor	Rent: \$20/SF	NNN (\$4.75)	
Suite 105	+/- 1,300 SF	1 st Floor	Rent: \$20/SF	NNN (\$4.75)	
Suite 106	+/- 1,500 SF	1 st Floor	Rent: \$20/SF	NNN (\$4.75)	
Suite 213	471 SF	2 nd Floor	Rent: \$18/SF (\$707/Month)	Gross Lease	Available 5/15/2026
Suite 223	1,036 SF	2 nd Floor	Rent: \$18/SF (\$1,554/Month)	Gross Lease	Available 3/15/2026





FIRST FLOOR



SECOND FLOOR



ABOUT THE AREA

CHARLOTTE, NC

Charlotte is the largest city in North Carolina, with a population of over 890,000 and a metro area exceeding 2.7 million people. It's often called the "Queen City," named in honor of Queen Charlotte of Mecklenburg-Strelitz.

The city is a major financial center, ranking second only to New York City in banking assets. It's home to the headquarters of Bank of America and a major East Coast hub for Wells Fargo, making finance a key part of its identity.

Charlotte is also a hub for NASCAR, featuring the Charlotte Motor Speedway and the NASCAR Hall of Fame. Sports fans can cheer for the Carolina Panthers (NFL), Charlotte Hornets (NBA), and Charlotte FC (MLS), all based in the city.

Education is a big part of Charlotte's landscape, with institutions like the University of North Carolina at Charlotte (UNCC) and Johnson & Wales University offering a variety of programs. Charlotte Douglas International Airport is one of the busiest airports in the U.S., connecting the city to destinations around the world.

Nature lovers will enjoy Charlotte's many parks and outdoor spaces, such as Freedom Park and the U.S. National Whitewater Center. Culturally, the city is home to attractions like the Mint Museum, Discovery Place, and the Levine Museum of the New South.

Uptown Charlotte, the city's central business and entertainment district, is known for its modern skyline, diverse restaurants, and lively arts scene. The city is also served by public transportation options like the LYNX Light Rail and the Charlotte Area Transit System (CATS), making it easy to get around.

Charlotte blends Southern charm with modern innovation, making it a dynamic place to live and visit. From food festivals and craft breweries to tech startups and thriving neighborhoods, the city offers a little something for everyone. Its warm climate, growing job market, and welcoming community continue to attract newcomers from all over the country.

