



SITE

Freestanding
Restaurant

Proposed Sears
Redevelopment

amazon go

HOBBY
LOBBY

PETSMART

Walmart

TOKYO CENTRAL

DAISO
JAPAN

RITE
AID

LA 2 BOY

WORLD MARKET

HAWTHORNE BOULEVARD 63,000 CPD

SEPULVEDA BOULEVARD 32,630 CPD

**RESTAURANT & RETAIL
REDEVELOPMENT OPPORTUNITY**

NEWMARK

3720-3770 SEPULVEDA BLVD.
22330-22356 & 22400 HAWTHORNE BLVD.

TORRANCE, CA

Property Features

- Located across the street from the Del Amo Mall
- Positioned on a major retail corridor that runs through the center of the South Bay
- Highly trafficked intersection at Hawthorne & Sepulveda with over 95,000 CPD
- Densely populated trade area with over 200,000 people in a 3 mile radius with an average HH income of \$153,354

Demographics

Population

1 mile	26,302
3 miles	202,970
5 miles	497,227

Average Household Income

1 mile	\$140,059
3 miles	\$153,354
5 miles	\$155,363

Daytime Population

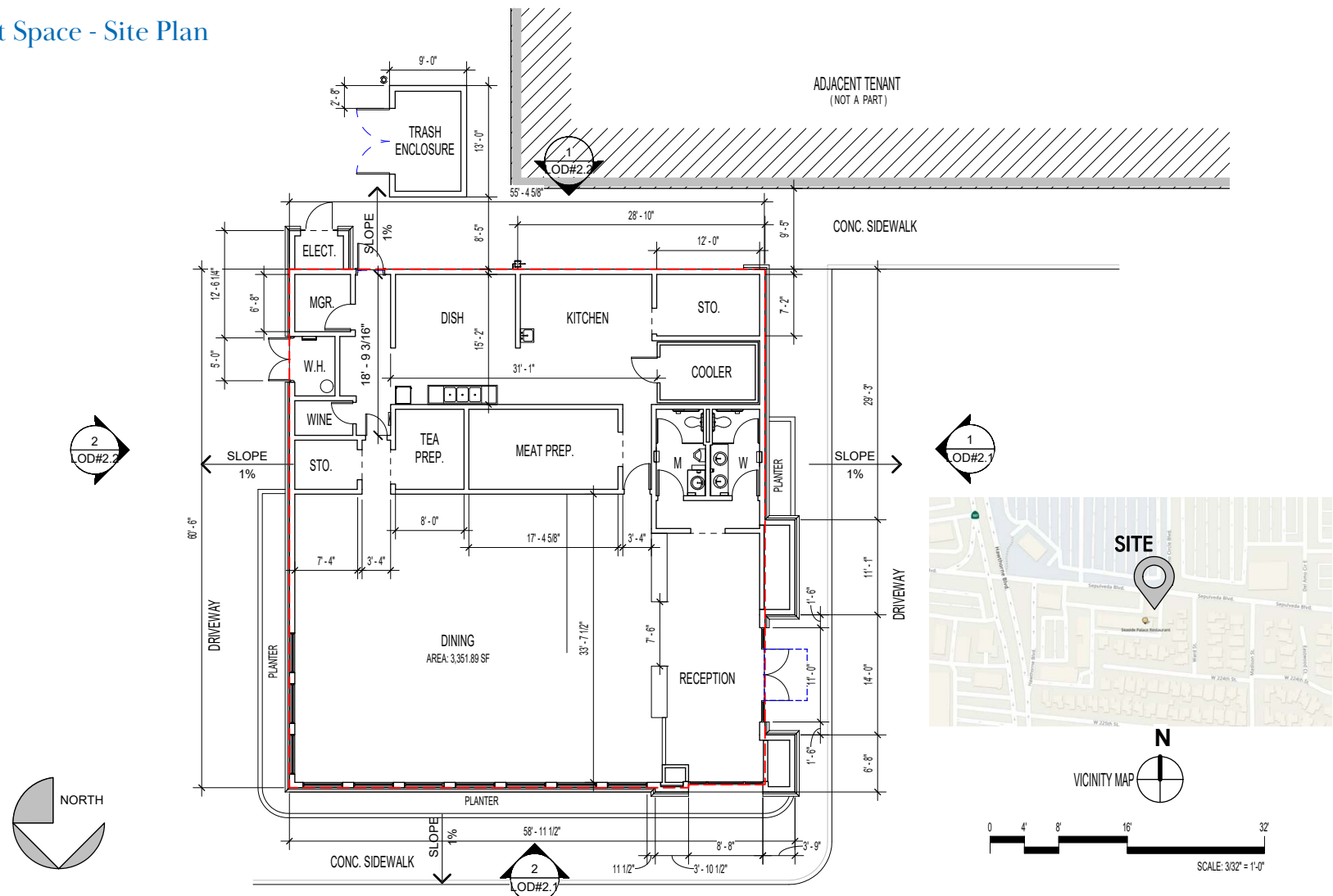
1 mile	25,701
3 miles	123,660
5 miles	220,897

Traffic Counts

Hawthorne Blvd.	63,000 cars/day
Sepulveda Blvd.	32,630 cars/day



Restaurant Space - Site Plan



3720-3770 SEPULVEDA BLVD. | TORRANCE, CA - RETAIL REDEVELOPMENT





INTERIOR PHOTOS - 22330 HAWTHORNE BLVD., STE A - 1,279 SF



Restaurant, Retail & Office Spaces Available

3720-3770 SEPULVEDA BLVD.
22330-22356 & 22400 HAWTHORNE BLVD.
TORRANCE, CALIFORNIA



NEWMARK

BRYAN NORCOTT

Executive Managing Director

t 213-298-3595

bryan.norcott@nrmk.com

CA RE Lic. #01200077

PABLO RODRIGUEZ

Managing Director

t 213-340-5682

pablo.rodriguez@nrmk.com

CA RE Lic. #01870757

DTLA OFFICE

555 S. Flower Street, Suite 3550

Los Angeles, CA 90071

Corporate License #01355491

nrmk.com/site/la-retail-leasing-group

The information contained herein has been obtained from sources deemed reliable but has not been verified and no guarantee, warranty or representation, either express or implied, is made with respect to such information. Terms of sale or lease and availability are subject to change or withdrawal without notice.