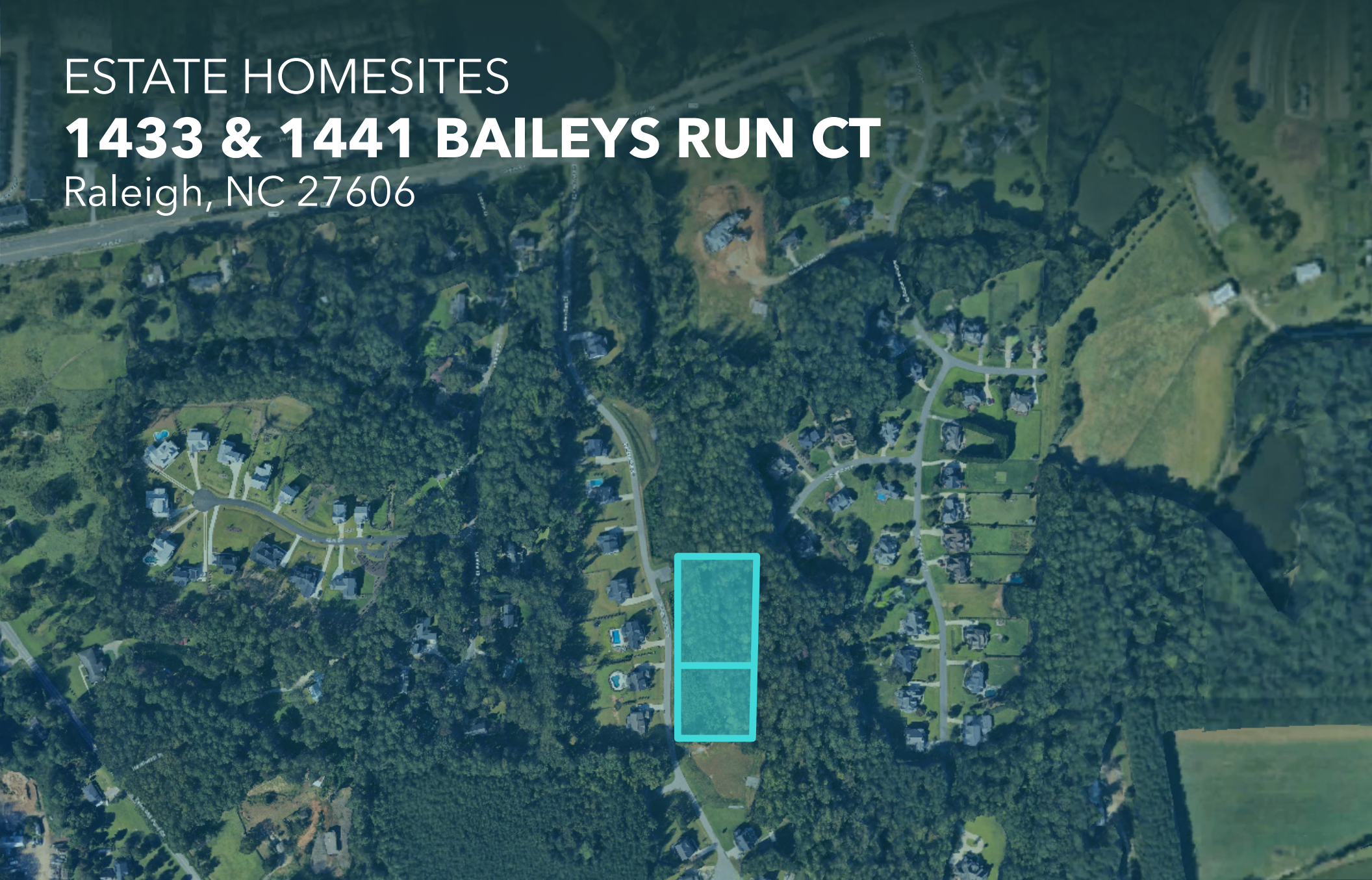


ESTATE HOMESITES

**1433 & 1441 BAILEYS RUN CT**

Raleigh, NC 27606



**TERRY EVANS**  
Broker  
919.422.5626  
terry@aspirenc.com

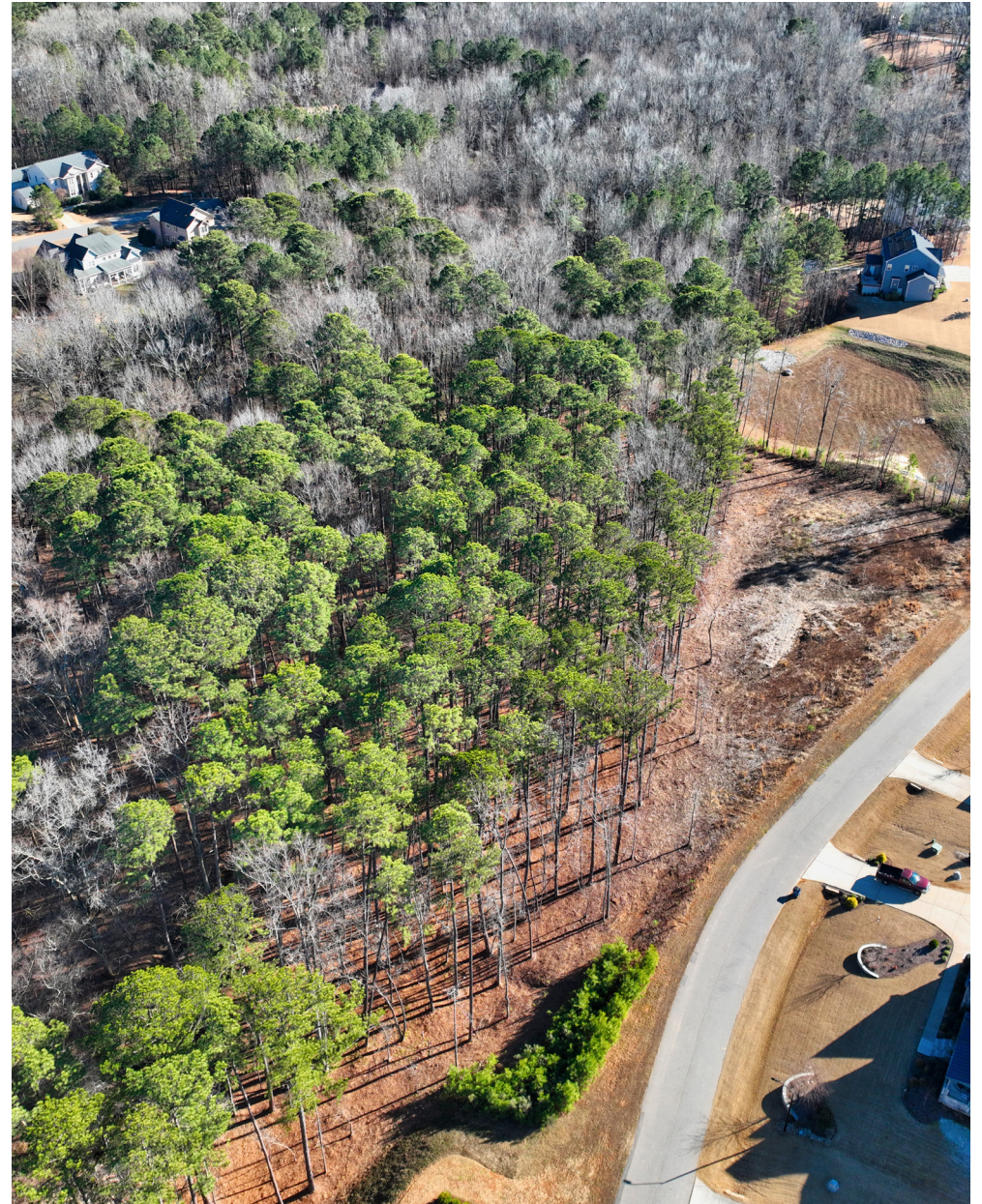
**JAMIE DAWSON**  
Broker/Builder/Accredited Land Consultant  
919.795.8776  
jamie@aspirenc.com



# PROPERTY SUMMARY

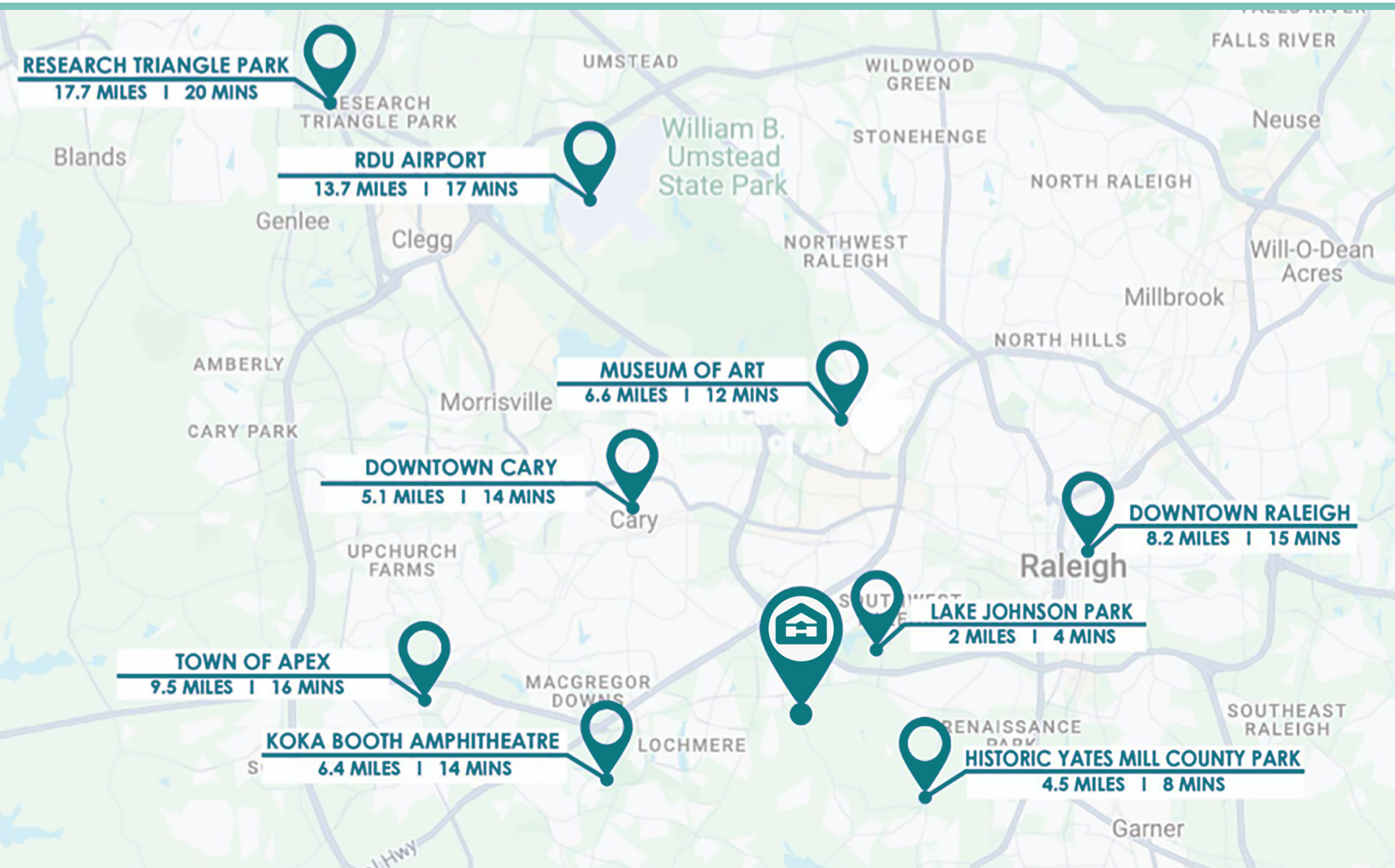
An exciting investment opportunity located in a bullseye location in Raleigh, North Carolina - one of the hottest markets in the country. Lot 1 (1433 Bailey's Run Court, approximately 1.82 acres) and Lot 2 (1441 Bailey's Run Court, approximately 1.17 acres) offer exceptional residential development potential within the established Bailey's Retreat community. Surrounding single-family homes are directly adjacent to this property tucked into the Bailey's Retreat neighborhood. Just a 15-minute drive to both downtown Raleigh and downtown Cary, this location is perfectly positioned to have easy access to much of what the Triangle has to offer. Several cultural and recreational opportunities are a quick drive from this property such as Cary's Koka Booth Amphitheatre, Hemlock Bluffs Nature Preserve, Lake Johnson Park, and Historic Yates Mill County Park.

Southwest Raleigh North Carolina represents a thriving real estate market driven by strong demand from both growing families and educated young professionals. The city has consistently ranked among the best places to live and work in the U.S., thanks to its robust economy, vibrant cultural scene, and highly regarded educational institutions. A prosperous job market and nearby celebrated cultural institutions in this quickly growing area make this investment opportunity particularly attractive. NC State's student population (35,000 students), along with the influx of tech and research jobs in the nearby Research Triangle Park, ensures a steady demand for housing options. Additionally, Raleigh's continued population growth, fueled by both domestic migration and international inflows, further bolsters the market, making it a prime location for single family investments like this property in the Bailey's



LAND FOR SALE | 1433 & 1441 BAILEYS RUN CT| RALEIGH, NC 27606

# AREA OVERVIEW



LAND FOR SALE | 1433 & 1441 BAILEYS RUN CT | RALEIGH, NC 27606

# DEMOGRAPHICS

8,274

Population

34.7

Median Age



3,845

Households

\$77,481

Median Disposable Income



\$96,741

Median Household Income



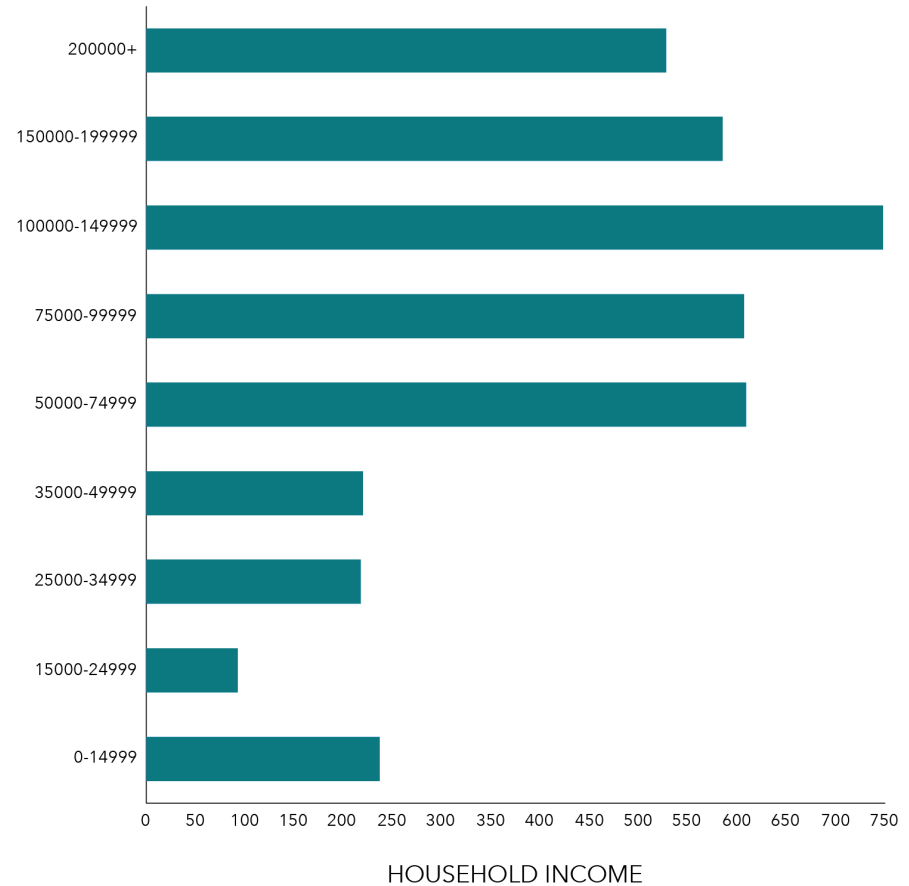
\$59,838

Per Capita Income



\$114,045

Median Net Worth



7.2%

No High School Diploma



5.9%  
High School Graduate



16.0%  
Some College/  
Associate's Degree



70.9%  
Bachelor's/Grad/Prof Degree



White Collar

85.9%



Blue Collar

7.0%



Services

9.8%

3.1%

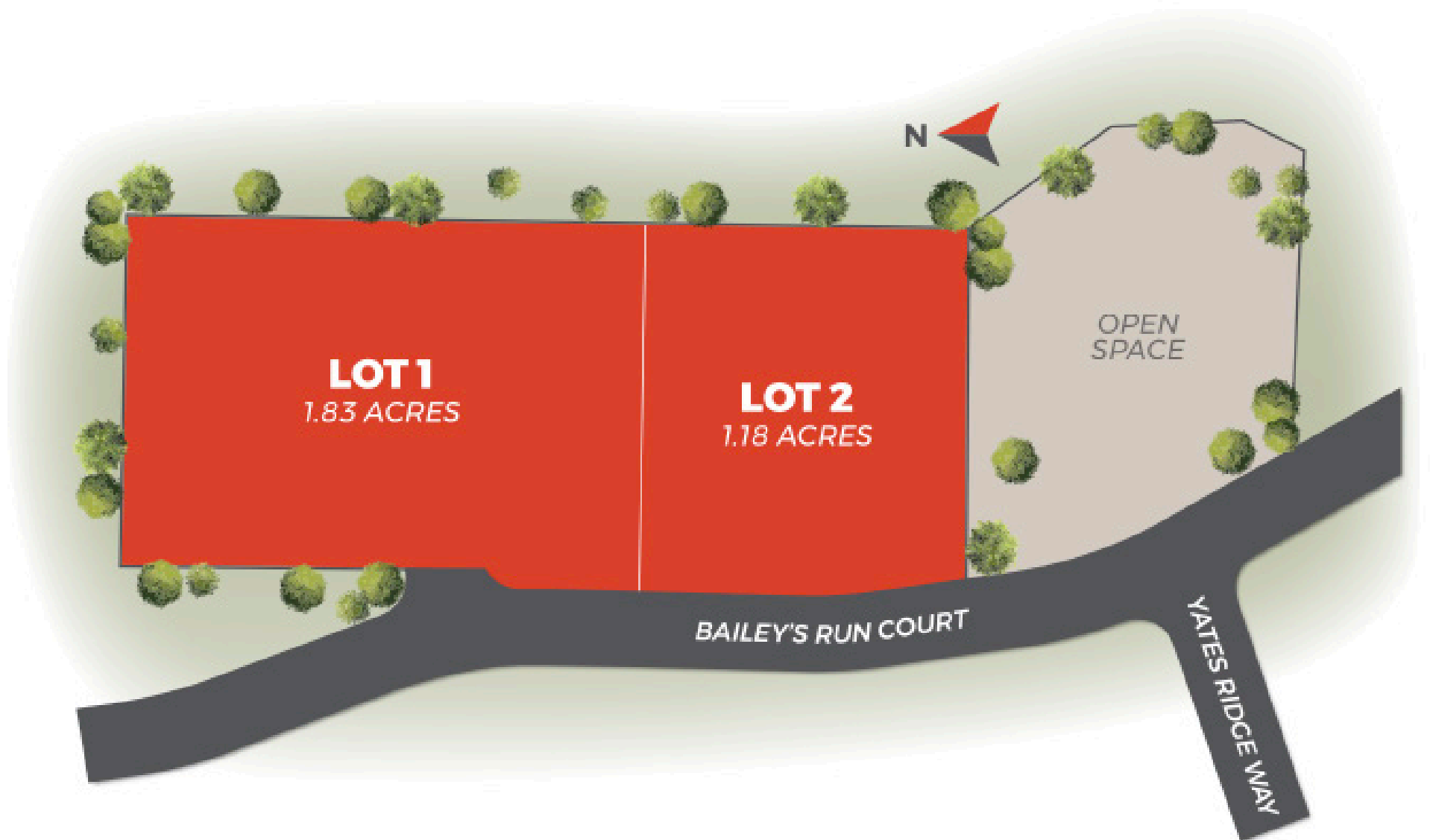
Unemployment Rate

Source: This infographic contains data provided by Esri (2024, 2029). © 2025 Esri

LAND FOR SALE | 1433 & 1441 BAILEYS RUN CT | RALEIGH, NC 27606



# LOT SITE PLAN



# AERIAL PHOTOS



LAND FOR SALE | 1433 & 1441 BAILEYS RUN CT | RALEIGH, NC 27606



## FOR SALE INQUIRIES, CONTACT:

**JAMIE DAWSON**

*Broker/Builder/Accredited Land Consultant*

919.795.8776

[jamie@aspirenc.com](mailto:jamie@aspirenc.com)

**TERRY EVANS**

*Broker*

919.422.5626

[terry@aspirenc.com](mailto:terry@aspirenc.com)



# Aspire

RE+DEV™