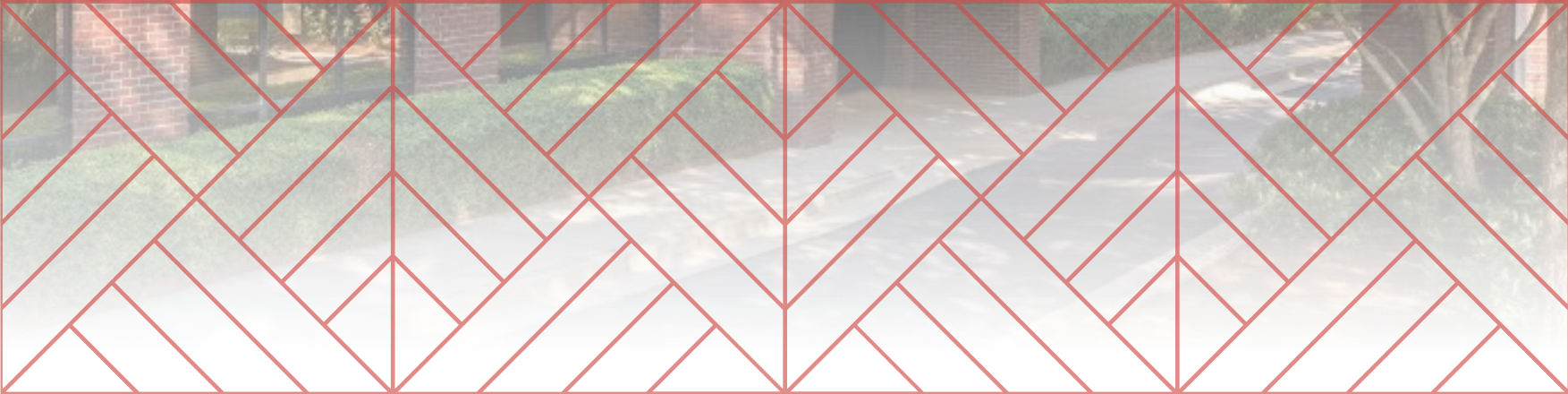




# 10700 MEDLOCK

10700 MEDLOCK BRIDGE RD  
DULUTH, GA 30097



EQUIPPED MEDICAL / PROFESSIONAL OFFICE SPACE FOR LEASE

**NEWMARK**

# PROPERTY HIGHLIGHTS

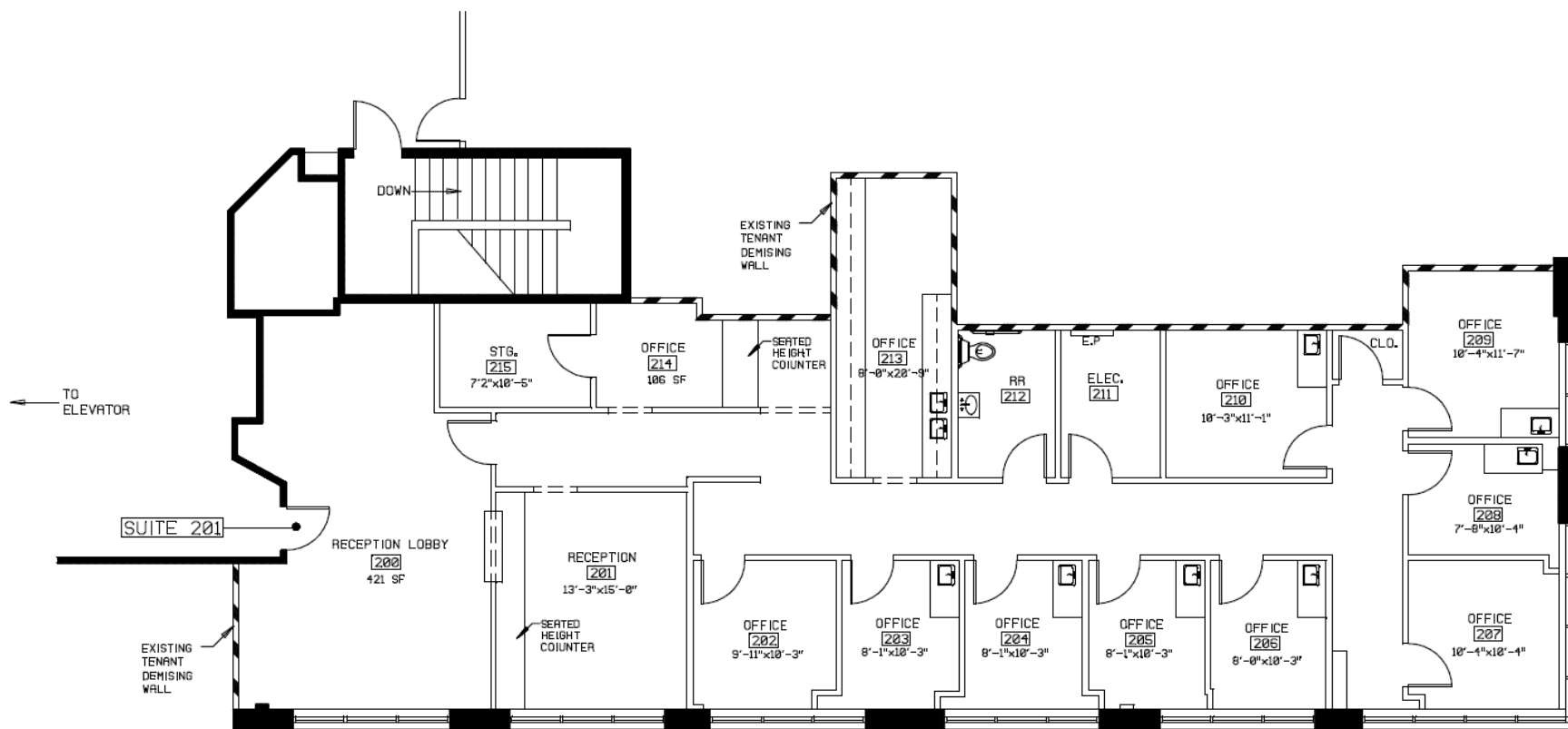
## 10700 MEDLOCK BRIDGE

- Offers a mix of medical/professional office space
- Marble/Granite upgraded common area finishes
- Covered drive-up entry to lobby
- 2 miles from the new Emory Johns Creek Hospital
- Highly visible highway signage on Medlock Bridge Road (Hwy 141)
- Easily accessible with traffic light access on Parsons Road with access to dining, retail, and more
- Excellent demographics with a population of 175,066 within a 5-mile radius and \$127,903 Annual Household Income
- Affluent North and South Fulton residential areas surround the project



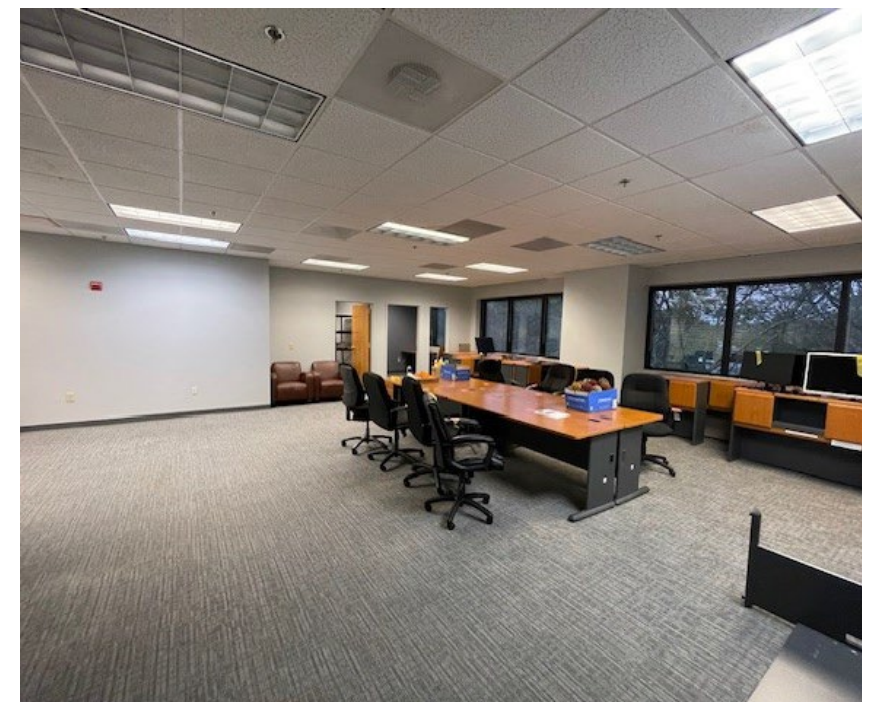
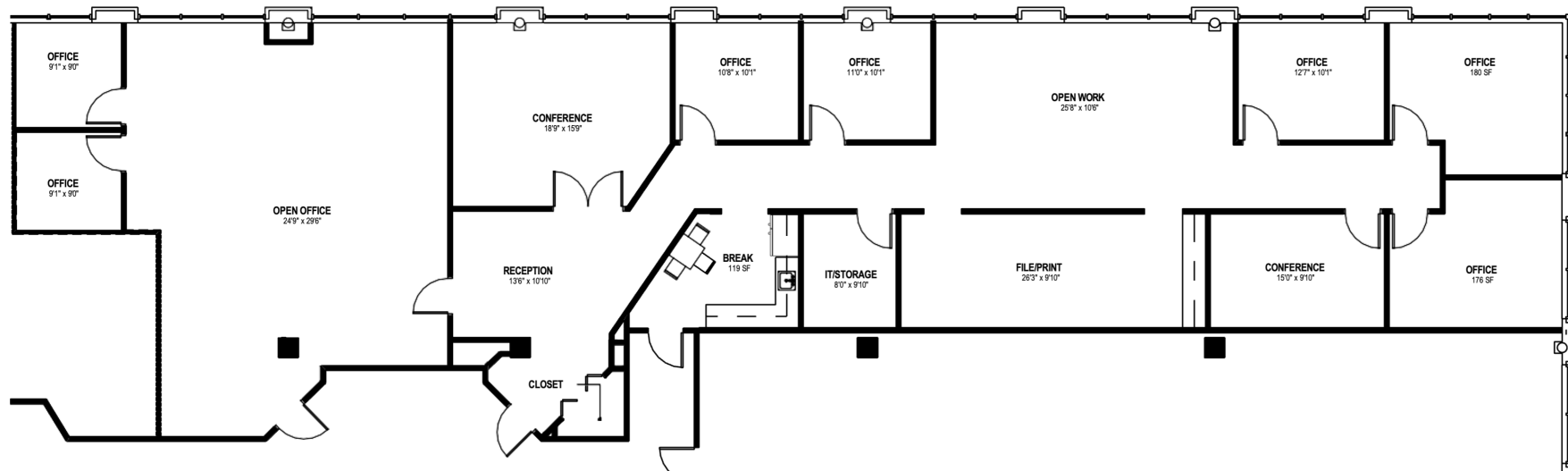
# SUITE 201 – 3,177 RSF

10700 MEDLOCK BRIDGE



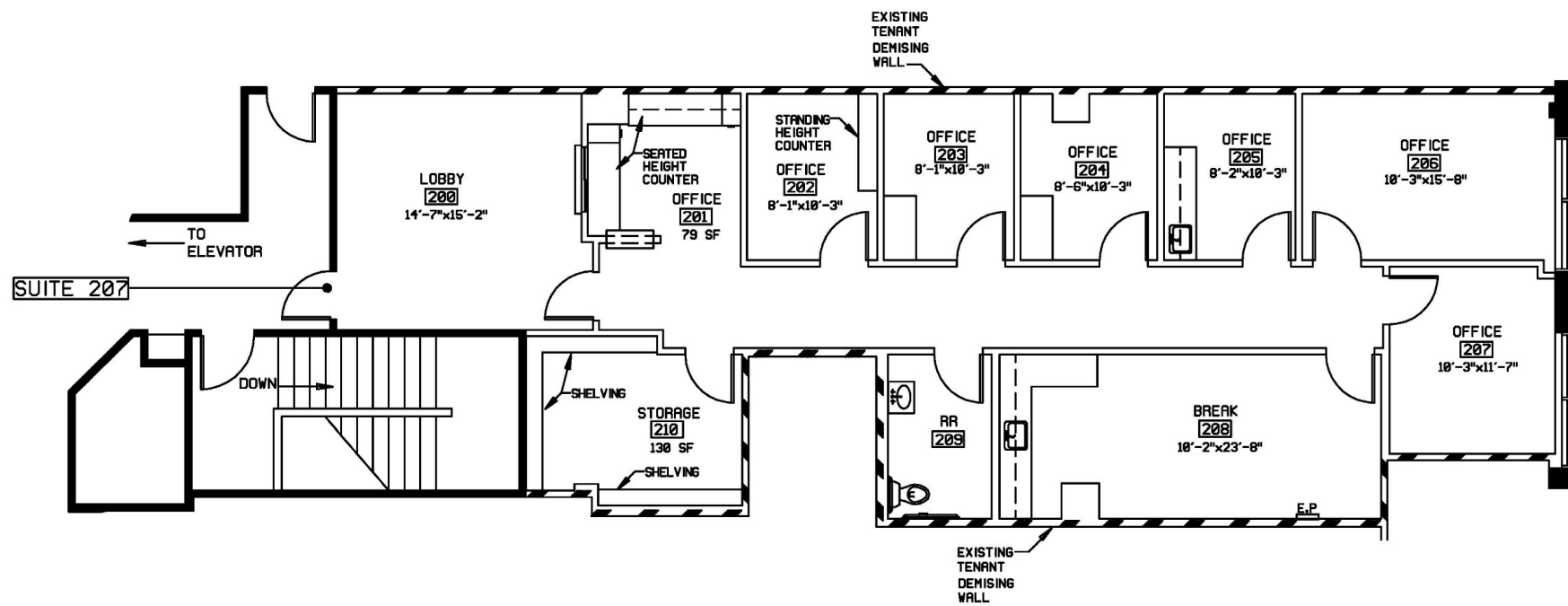
# SUITE 206 – 4,468 RSF

10700 MEDLOCK BRIDGE

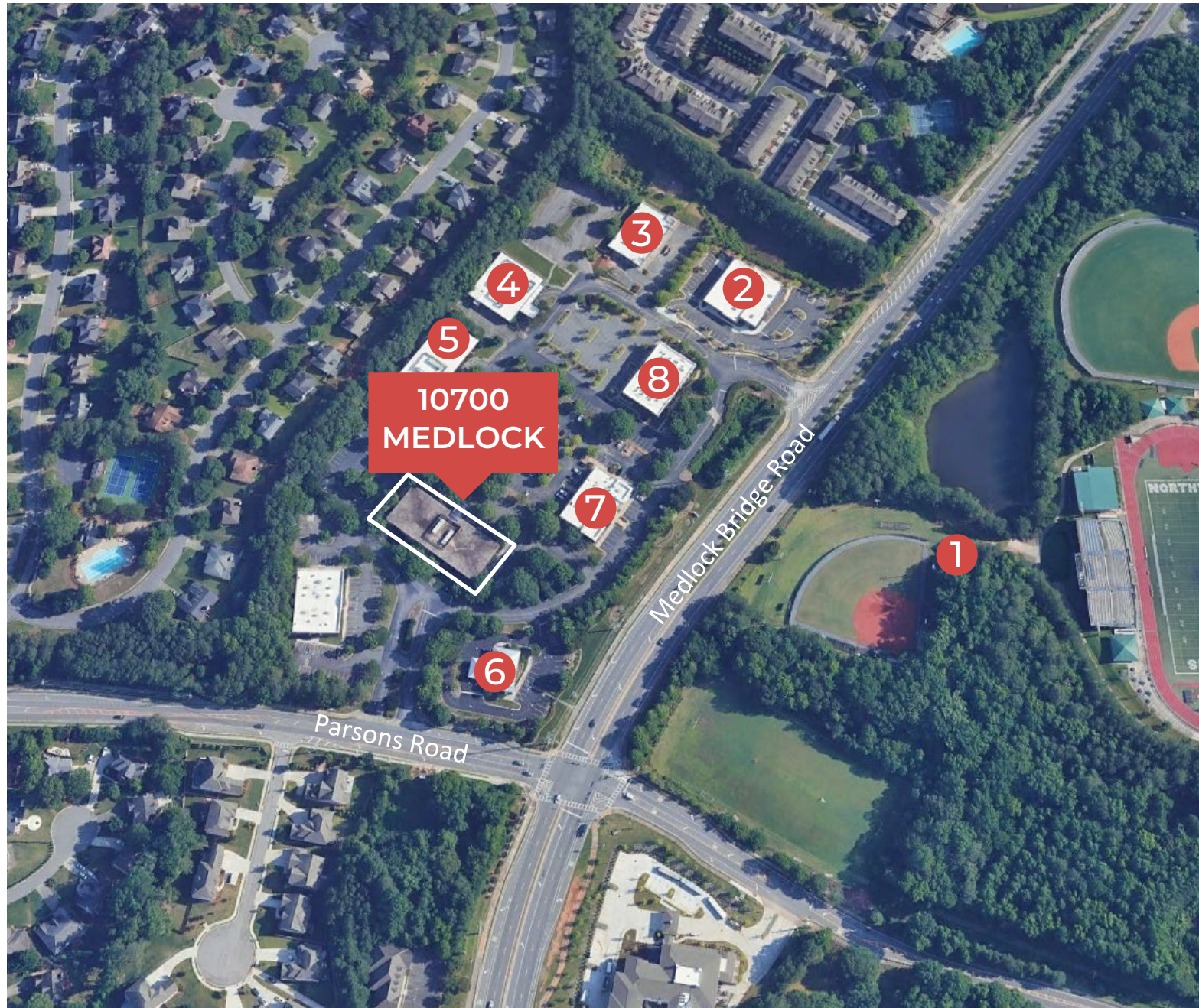


# SUITE 207 – 2,010 RSF

10700 MEDLOCK BRIDGE



# LOCATION



- 1 Northview High School
- 2 Pediatric Dentistry of Johns Creek
- 3 Atlanta Professional Dance Academy
- 4 Medquest Associates
- 5 DaVita Bridge Dialysis
- 6 American Commerce Bank
- 7 Grady Dental Care
- 8 Atlanta Hand Specialist



# CONTACT US

## RJ ZURAK

Senior Managing Director  
770-552-2420  
[RL.Zurak@nmrk.com](mailto:RL.Zurak@nmrk.com)

## BRAD KIRSCHNER

Senior Managing Director  
770-552-2448  
[Brad.Kirschner@nmrk.com](mailto:Brad.Kirschner@nmrk.com)

## STEWART THRASH

Senior Managing Director  
404-926-1074  
[Stewart.Thrash@nmrk.com](mailto:Stewart.Thrash@nmrk.com)

# 10700 MEDLOCK

10700 MEDLOCK BRIDGE RD  
DULUTH, GA 30097

NEWMARK