



509 WALNUT

KANSAS CITY, MO 64106

2,500 - 4,230 SQFT



**SECOND FLOOR OFFICE SPACE AMONG PLANTERS ROW.
1/2 BLOCK TO THE SOUTH OF CITY MARKET**

\$16.00 PSF MODIFIED GROSS

**THIS HISTORIC OFFICE SPACE OFFERS A SEMI OPEN FLOORPAN WITH A
DEDICATED RECEPTION AREA, KITCHENETTE AND EXPOS BRICK.
2 PARKING SPACES AVAILABLE**

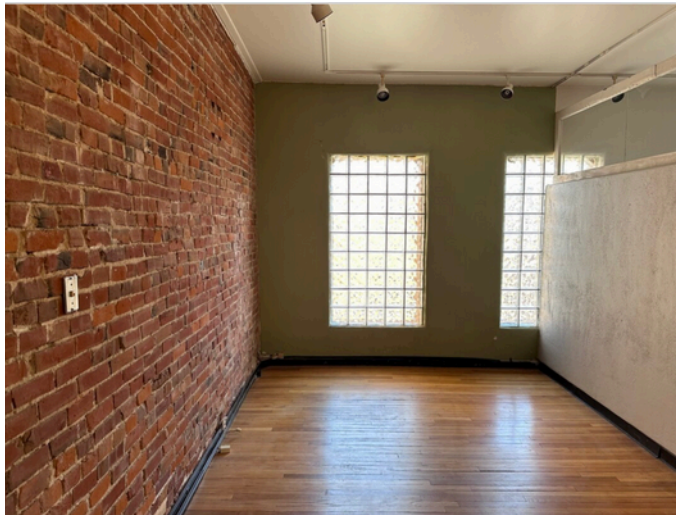
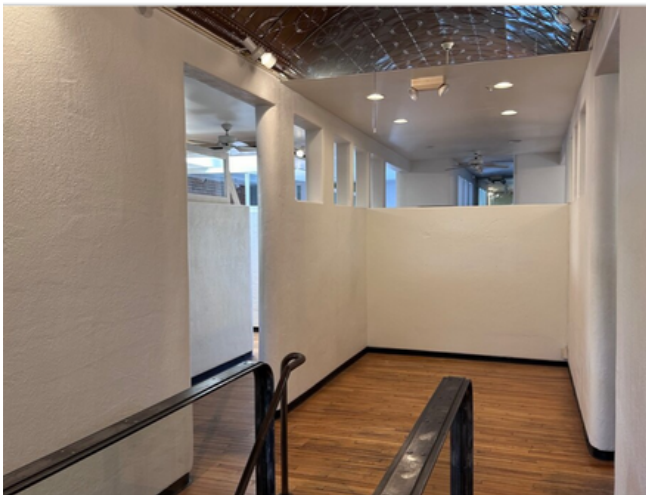
Reece Commercial

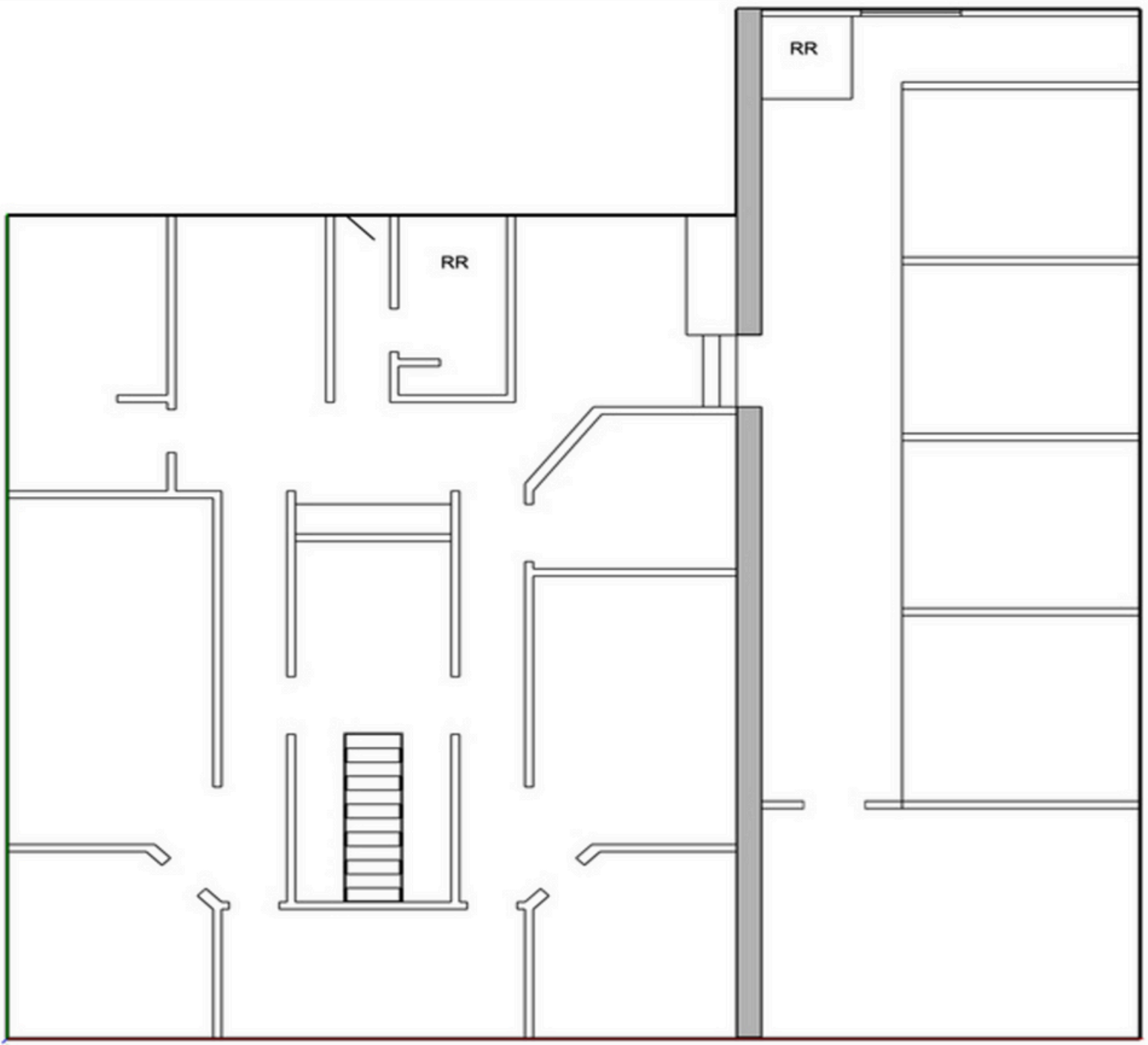
**11601 Granada St
Leawood, KS 66210
913.652.4300**



Connor Sweeney

**Brokerage Associate
816.217.7352
csweeney@reececommercial.com**





REECE

COMMERCIAL REAL ESTATE

a Berkshire Hathaway Affiliate

Reece Commercial

11601 Granada St
Leawood, KS 66210
913.652.4300

Connor Sweeney

Brokerage Associate
816.217.7352
csweeney@reececommercial.com