

DDG-297

AVAILABLE

WILLOW AVE.

E. CENTRAL AVE.

FOR LEASE

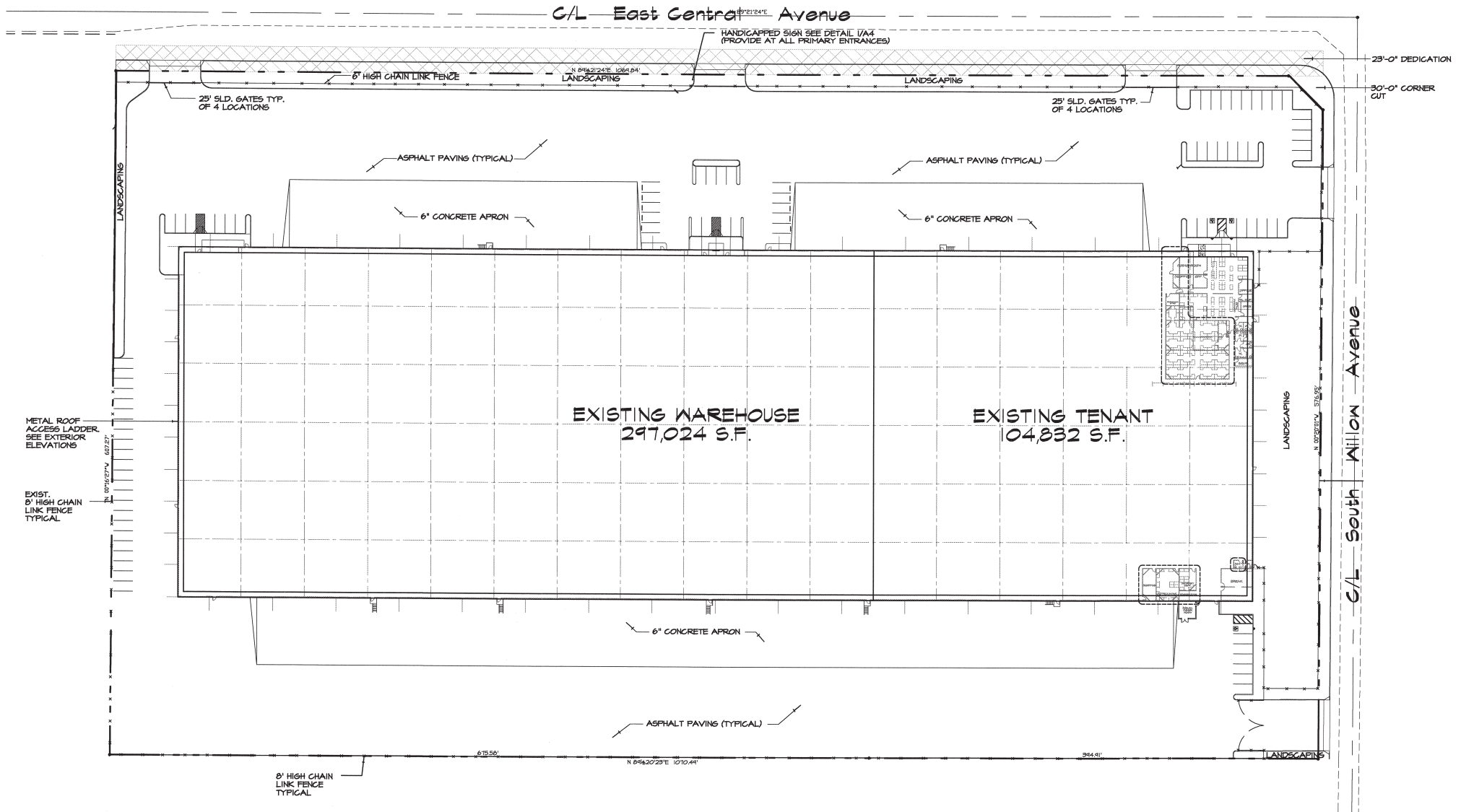
**3443 East
Central Ave.
Fresno, CA 93725**

104,832 Sq Ft Available

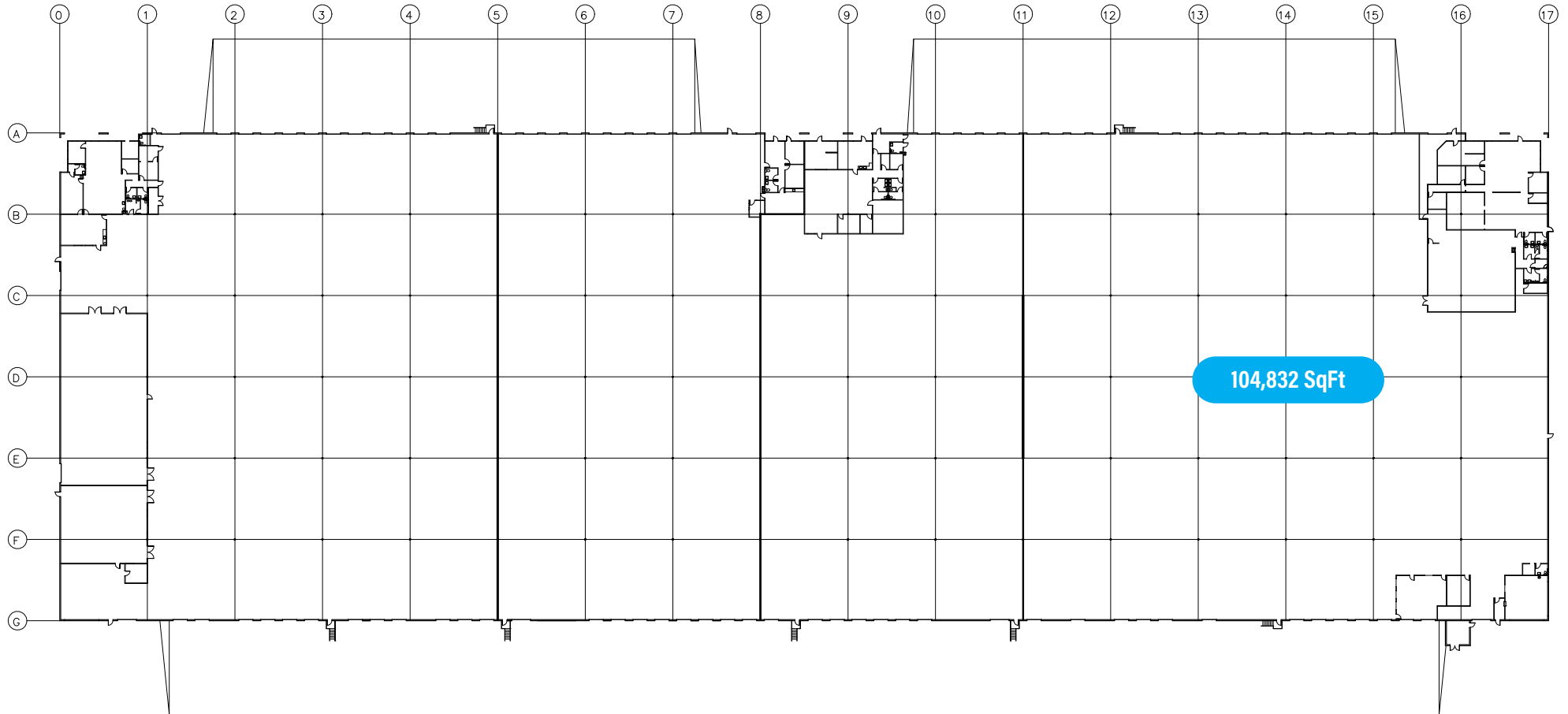


Marcus Pignotti
(559) 225-6363
Extension 8

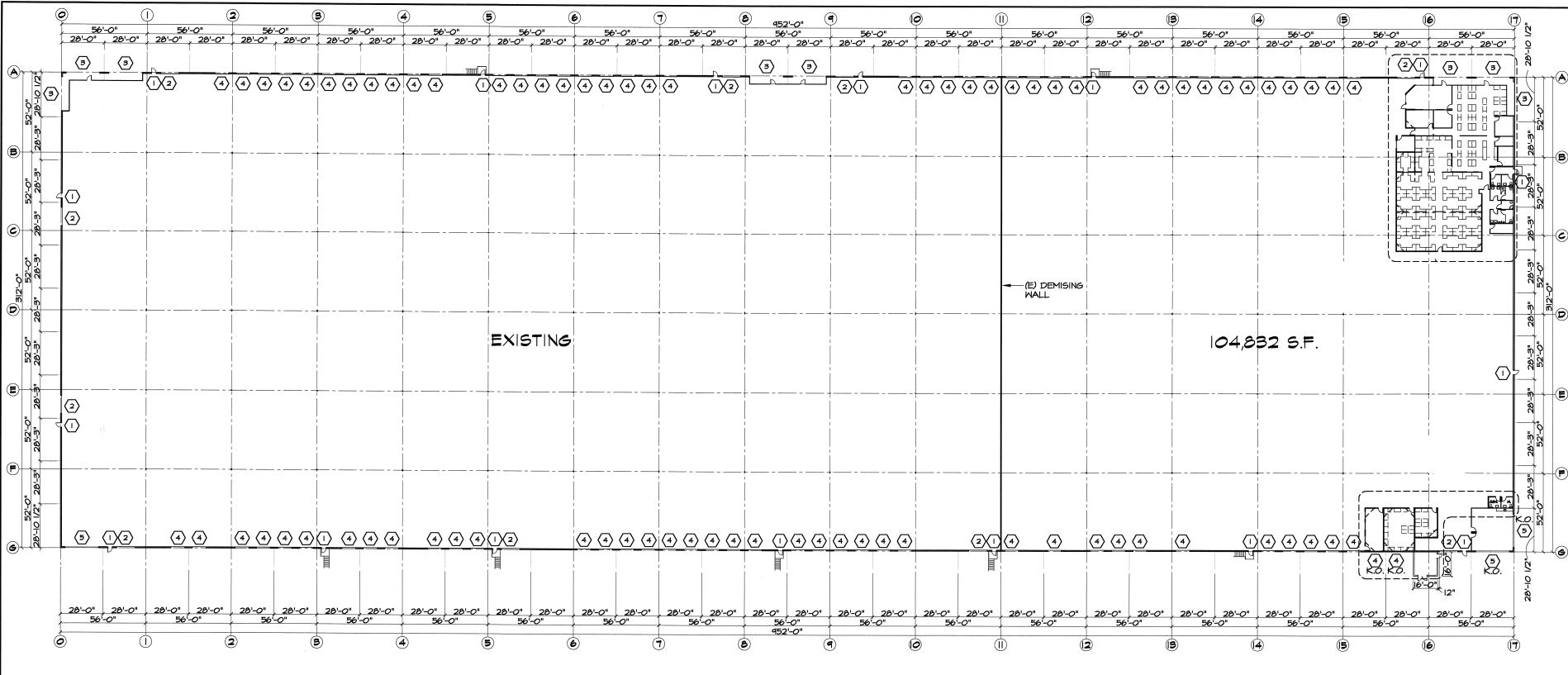
Office:
7519 N. Ingram Ave Suite #104
Fresno, California. 93711



BUILDING PLAN



FLOOR PLAN

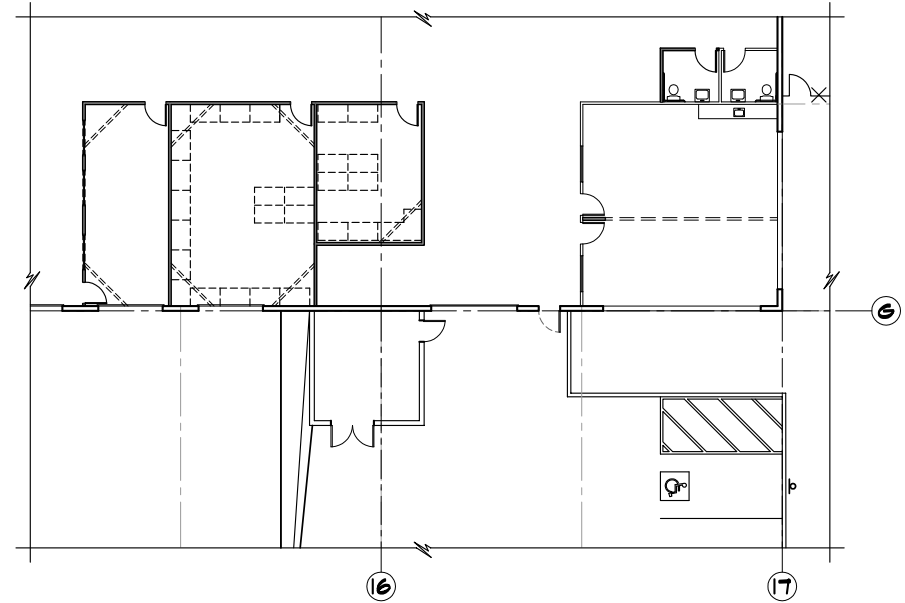
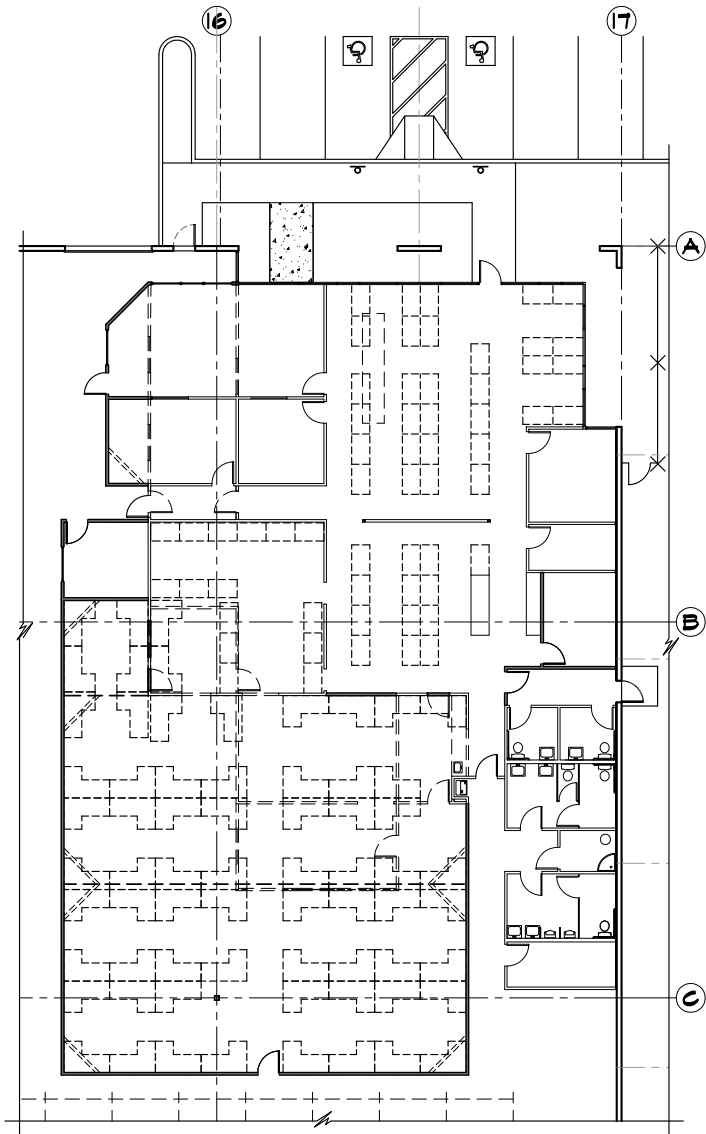


Marcus Pignotti
 (559) 225-6363
 Extension 8

Office:
 7519 N. Ingram Ave Suite #104
 Fresno, California. 93711

NORTH OFFICE

SOUTH OFFICE



Specifications

AVAILABLE:	104,832 SF	TRUCK DOCKS DRAINAGE:	The truck dock has a gravity drainage system.
BUILDING:	297,024 SF	DOCK HIGH DOORS:	(29) - 9' x 10' dock high doors, Cross Dock.
DIMENSIONS:	336' x 312'		(2) - 12' x 14' grade level doors.
MODULE SIZE:	56' x 312' = 17,472 sq. ft.	FIRE SYSTEM:	ESFR
COLUMN SPACING:	56' x 52'	WAREHOUSE LIGHTING:	Fluorescent and LED
DOCK HIGH BUILDING:	Yes, Cross Dock	ELECTRICAL:	800 amps 277/480v
CONCRETE SLAB:	6"	OFFICE:	6,768 SF
CLEAR HEIGHT:	30' minimum	ADDRESS:	3443 E. Central Ave., Fresno, CA 93725
ROOF CONSTRUCTION:	Panelized Wood System		
ROOFING:	New .60 mil TPO		
DOCK CONSTRUCTION:	60' Reinforced 6" concrete dock apron.		For further information, please contact: Marcus Pignotti (559) 225-6363, ext. 8