



FOR LEASE

943 N SHORELINE BLVD
MOUNTAIN VIEW, CA
OFFICE / WAREHOUSE ±13,278 SF

PROPERTY HIGHLIGHTS

943 N SHORELINE BLVD
MOUNTAIN VIEW, CA

OFFICE / WAREHOUSE ±13,278 SF

PROPERTY OVERVIEW

- Rare Office / Warehouse Space in Mountain View
- First time on the market in 26+ Years
- Building Size: ±13,278 square feet
(30% Office / 70% Warehouse)
- Lot Size: ±32,426 square feet (0.74 acre)
- Yr Built/Renovated: 1966 / 1998 / 2007
- Zoning: Limited Industrial (ML)
- (3) Exterior & (2) Interior Roll-up Doors
- Power: 600 AMP—120/240v
- Call for pricing

LOCATION OVERVIEW

- ±1 mile to Castro Street & Caltrain Station
- Immediate Access to MVgo stops at Shoreline & Terra Bella (Northbound & Southbound)
- Easy Access to Highway 101 & 85



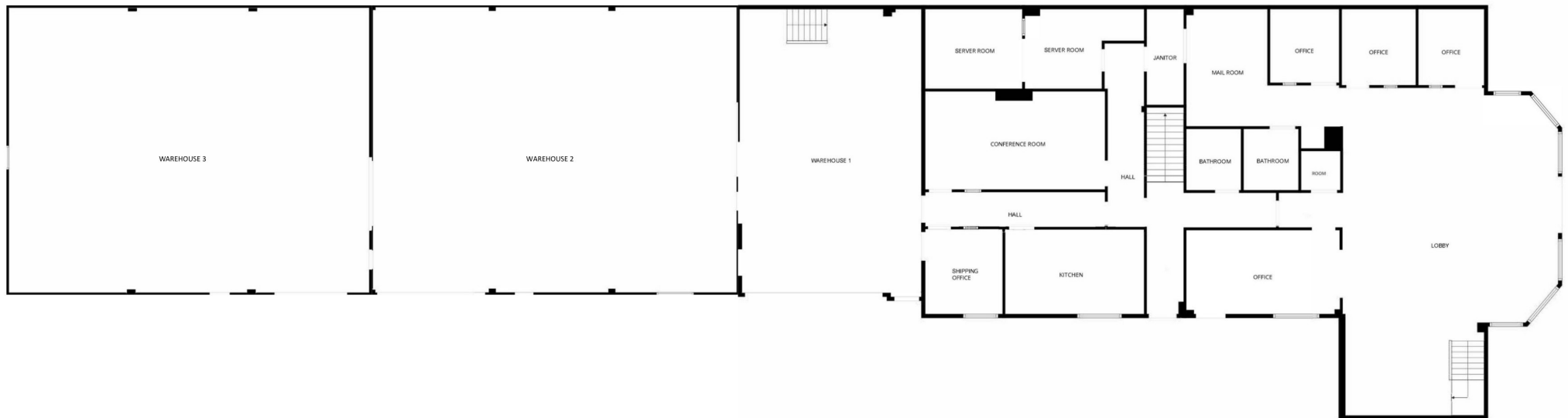
FLOOR PLAN

943 N SHORELINE BLVD
MOUNTAIN VIEW, CA

OFFICE / WAREHOUSE ±13,278 SF

FIRST FLOOR OFFICE & WAREHOUSE

- Large Open Lobby
- (4) Private Offices
- (1) Large Conference Room
- (2) Bathrooms
- Break Room
- Mail Room
- Server Room
- Shipping Office
- Warehouse 1, 2 & 3



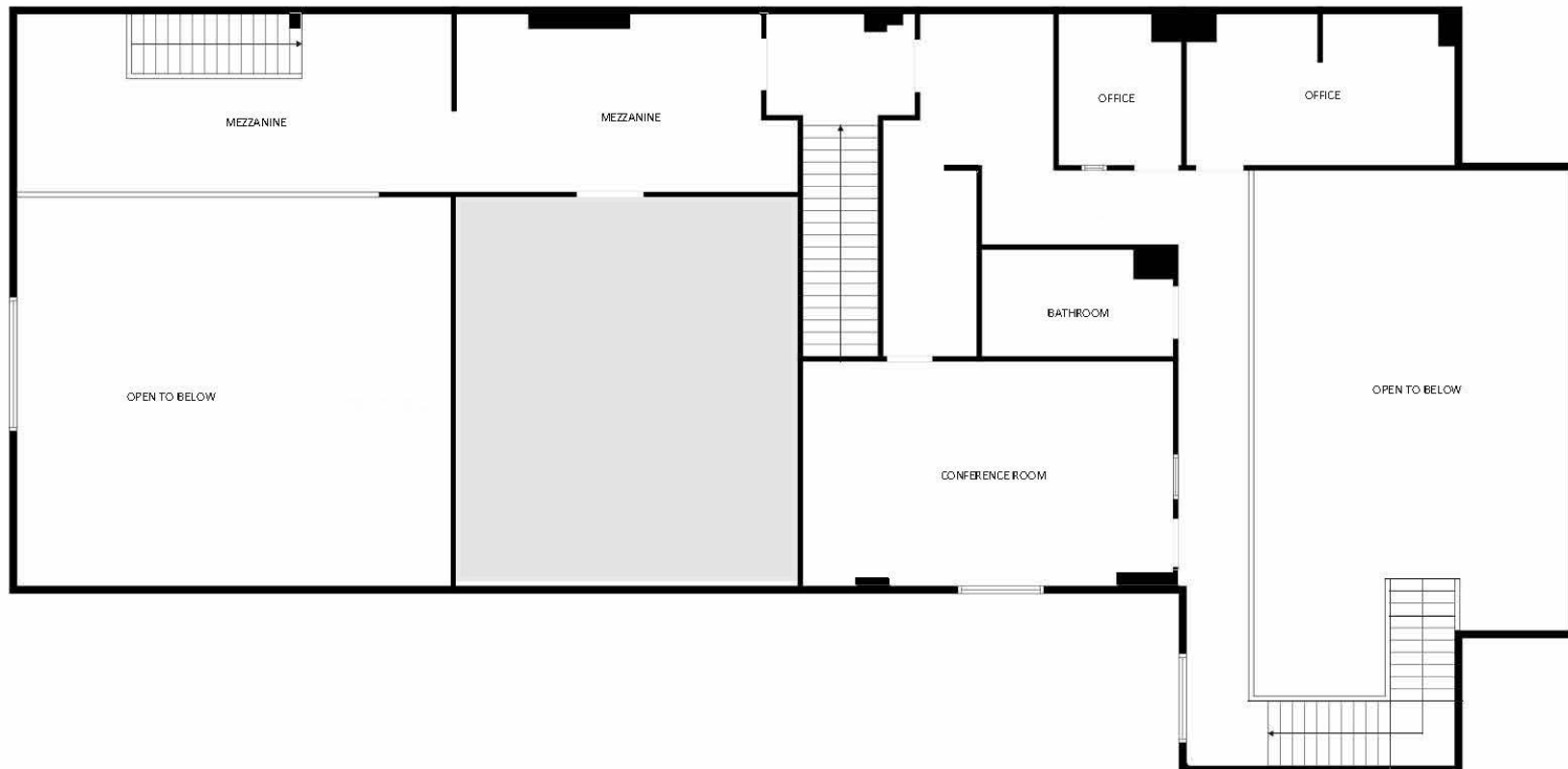
FLOOR PLAN

943 N SHORELINE BLVD
MOUNTAIN VIEW, CA

OFFICE / WAREHOUSE ±13,278 SF

SECOND FLOOR OFFICE

- (2) Private Offices
- (1) Large Conference Room
- (1) Bathroom
- Break Area
- Mezzanine Area & Storage



PROPERTY PHOTOS

943 N SHORELINE BLVD
MOUNTAIN VIEW, CA

OFFICE / WAREHOUSE ±13,278 SF



PROPERTY PHOTOS

943 N SHORELINE BLVD
MOUNTAIN VIEW, CA

OFFICE / WAREHOUSE ±13,278 SF





CONTACT:

Michael Hecht
Vice President
(408) 250-3442
michael@metrovo.com
Lic. #01833629