

# For Lease

# 2910 Humboldt Street Los Angeles | CA

---



Presented By:

**Randy Rohrer**

818.244.3000

randy@pacwestonline.com

DRE#00672287

**Scott Cox**

818.244.3000

scott@pacwestonline.com

DRE#01070703

**Ron Rohrer**

818.309.0628

ron@pacwestonline.com

DRE#01918399

**Chris Rohrer**

818.624.1180

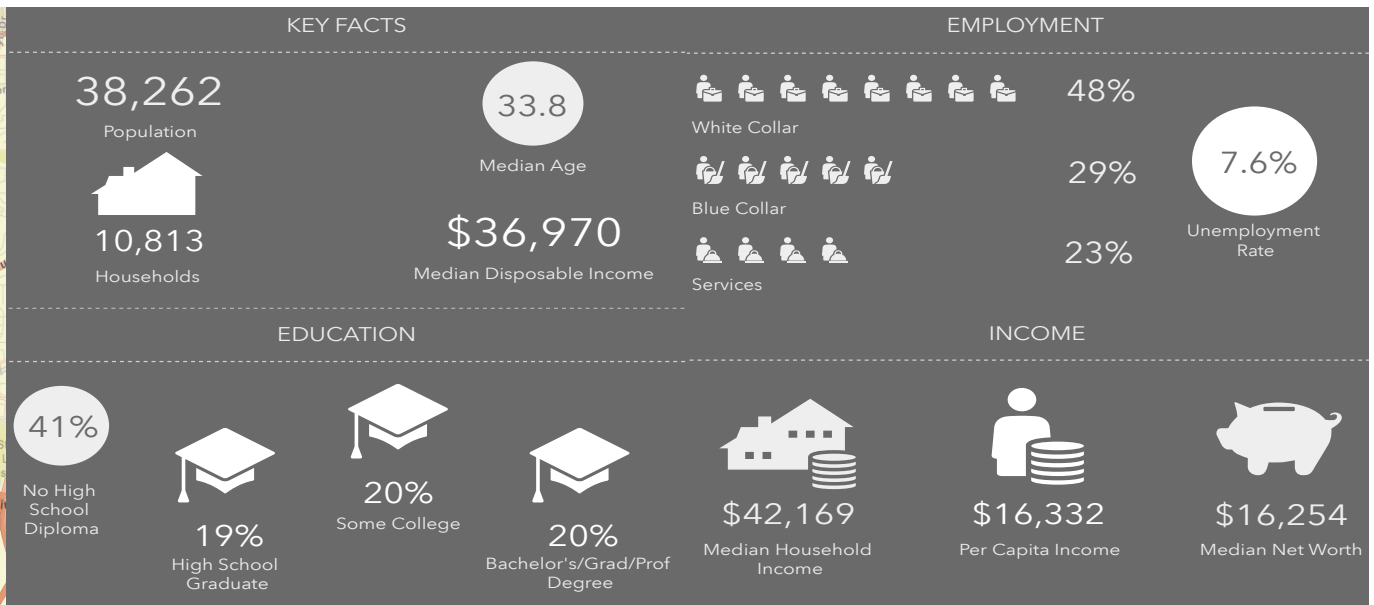
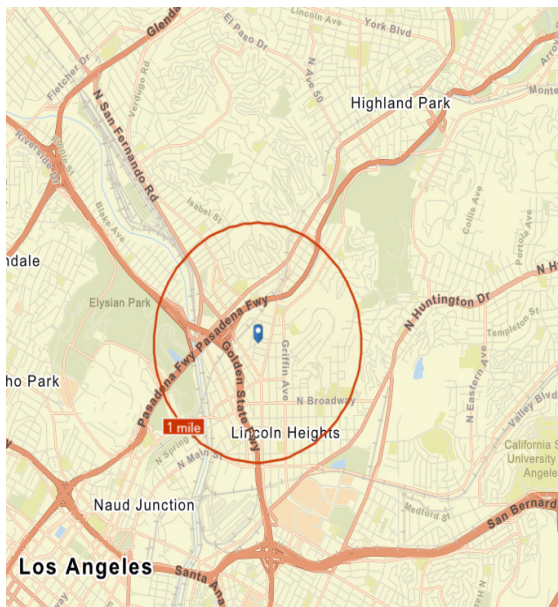
chris@pacwestonline.com

DRE#02018754



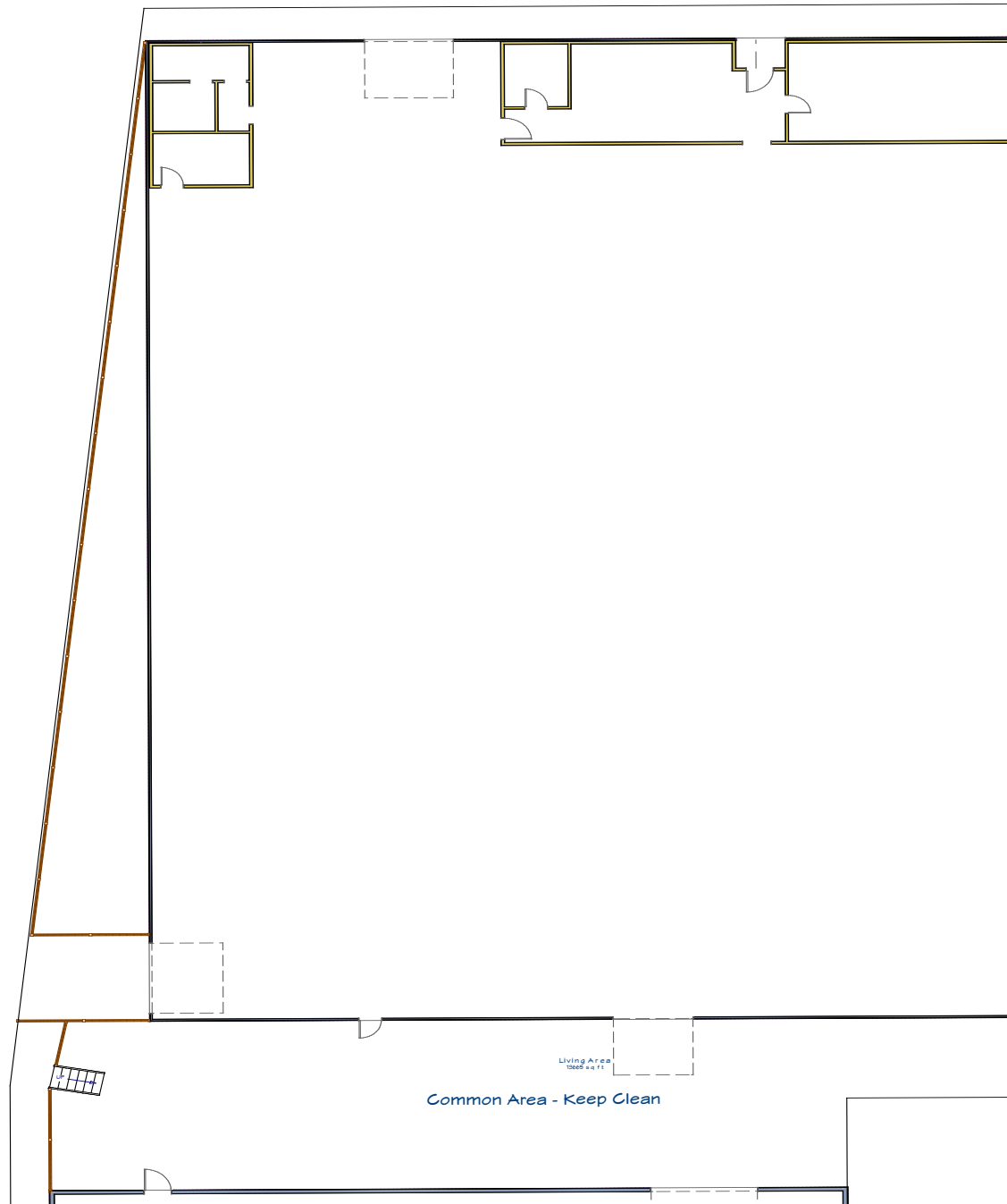
# Property Information

Available SF:	9,680 SF	› Corrugated metal sawtooth building
Asking Price:	\$11,500 (\$1.19/sf)	› Gated parking
Land SF:	POL	› 13' minimum clearance
Zoning:	MRI*	› Great Lincoln Heights location
Parking:	6 gated	› 1 Dock high loading door
Year Built:	1952	› No cannabis use
Power:	400 A; 240 V; 3 Ph	



The facts contained herein, while not guaranteed as to accuracy, are accurate to the best of our knowledge and belief.

# Floor Plan



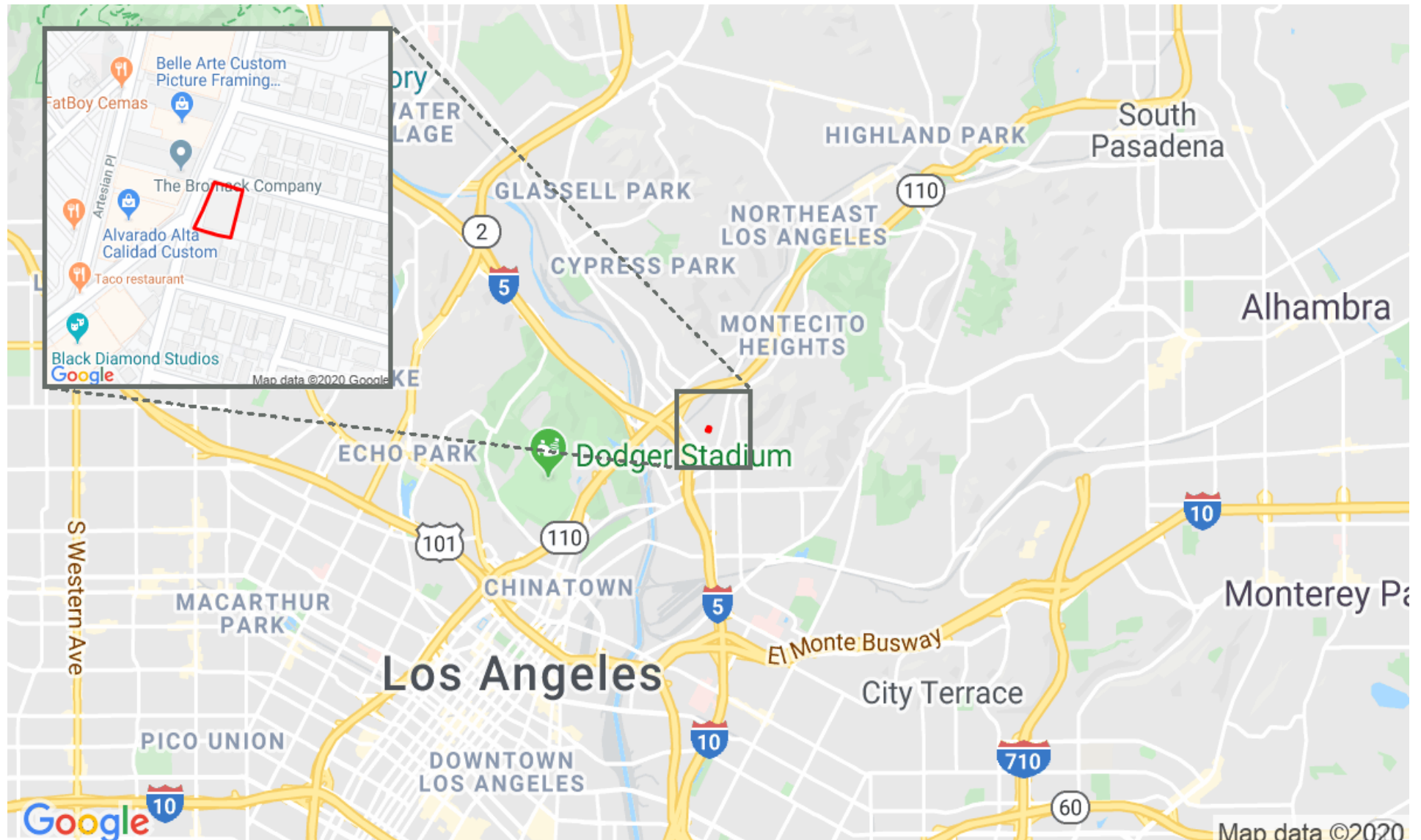
# Map Location

## 2910 Humboldt St



Pacific West Business Properties, Inc.

6624 San Fernando Road Glendale, CA 91201 | 818-244-3000





# Additional Photos

